



**Statistics
South Africa**

Preferred supplier of quality statistics



Statistical release

P0211

Quarterly Labour Force Survey

Quarter 1, 2011

Embargoed until:

**03 May 2011
11:30**

Enquiries:

User Information Services
Tel: (012) 310 8600 / 4892 / 8390

Forthcoming issue:

Quarter 2, 2011

Expected release date

July 2011

Statistics South Africa • Mbalo-mbalo ya Afrika Tshipembe • Tinhlayo-tiko ta Afrika-Dzonga • Dipalopalo tsa Aforika Borwa • Ezezibalo zaseNingizimu Afrika
Dipalopalo tša Afrika Borwa • Divalopalo tsa Afrika Borwa • Ubalo lwaseMzantsi Afrika • Telubalo eNingizimu Afrika • iNanimbalo leSewula Afrika • Statistiek Suid-Afrika

Published by Statistics South Africa, Private Bag X44, Pretoria 0001

© Statistics South Africa, 2011

Users may apply or process this data, provided Statistics South Africa (Stats SA) is acknowledged as the original source of the data; that it is specified that the application and/or analysis is the result of the user's independent processing of the data; and that neither the basic data nor any reprocessed version or application thereof may be sold or offered for sale in any form whatsoever without prior permission from Stats SA.

Stats SA Library Cataloguing-in-Publication (CIP) Data

Quarterly Labour Force Survey Quarter 1, 2011/Statistics South Africa. Pretoria: Statistics South Africa, 2011

Quarterly

1. Labour supply – Statistics
 2. Labour supply (South Africa)
 3. Unemployment (South Africa)
 4. Informal sector (Economics) – South Africa
 5. Formal sector (Economics) – South Africa
- I. Statistics South Africa
 - II. Series
- (LCSH 16)

A complete set of Stats SA publications is available at Stats SA Library and the following libraries:

National Library of South Africa, Pretoria Division
National Library of South Africa, Cape Town Division
Library of Parliament, Cape Town
Bloemfontein Public Library
Natal Society Library, Pietermaritzburg
Johannesburg Public Library
Eastern Cape Library Services, King William's Town
Central Regional Library, Polokwane
Central Reference Library, Nelspruit
Central Reference Collection, Kimberley
Central Reference Library, Mmabatho

This publication is available both in hard copy and on the Stats SA website www.statssa.gov.za.

The data and metadata set from the Quarterly Labour Force Survey will be available on CD-ROM. A charge may be made according to the pricing policy, which can be accessed on the website.

Stats SA also provides a subscription service.

Enquiries:

	Printing and Distribution	User Information Services
Tel:	(012) 310 8251	(012) 310 8600
Fax:	(012) 321 7381	(012) 310 8500/ 8495
Email:	distribution@statssa.gov.za	info@statssa.gov.za

Contents

	Page
List of tables in highlights of the results	iii
List of figures in highlights of the results	iii
List of tables.....	iv
1. Introduction	vi
2. Highlights of the results.....	vi
3. Employment	vii
4. The unemployed population.....	xi
5. Characteristics of the not economically active population	xiv
6. Technical notes	xv
6.1. Response details	xv
6.2. Survey requirements and design	xv
6.3. Sample rotation.....	xv
6.4. Weighting.....	xv
6.5. Non-response adjustment.....	xvi
6.6. Final survey weights	xvi
6.7. Estimation	xvi
6.8. Reliability of the survey estimates.....	xvi
7. Definitions	xvii

List of tables in highlights of the results

	Page
Table A: Key labour market indicators	vi
Table B: Employment by industry	viii
Table C: Employment by province	viii
Table D: Employment by occupation	x
Table E: Unemployed by sex	xi
Table F: Characteristics of the unemployed	xiii
Table G: The not economically active	xiv
Table H: Response rates by province	xv

List of figures in highlights of the results

Figure 1: Total employment, quarter 1: 2008 to quarter 1: 2011	vii
Figure 2: Quarter-to-quarter change in employment, quarter 1: 2008 to quarter 1: 2011	vii
Figure 3: Changes in the formal sector employment by industry	ix
Figure 4: Changes in the informal sector employment by industry	x
Figure 5: Unemployment rate by province	xi
Figure 6: Unemployment rate by population group	xii
Figure 7: Quarter to quarter change in the number of new entrants quarter 1: 2008 to quarter 1: 2011	xiii

List of tables

	Page
Table 1: Population of working age (15-64 years)	1
Table 2: Labour force characteristics by sex - All population groups	2
Table 2: Labour force characteristics by sex - All population groups (concluded).....	3
Table 2.1: Labour force characteristics by population group	4
Table 2.1: Labour force characteristics by population group (concluded)	5
Table 2.2: Labour force characteristics by province	6
Table 2.2: Labour force characteristics by province (continued)	7
Table 2.2: Labour force characteristics by province (continued)	8
Table 2.2: Labour force characteristics by province (continued)	9
Table 2.2: Labour force characteristics by province (concluded)	10
Table 2.3: Labour force characteristics by province - Expanded definition of unemployment	11
Table 2.3: Labour force characteristics by province - Expanded definition of unemployment ...	12
Table 2.3: Labour force characteristics by province - Expanded definition of unemployment ...	13
Table 2.3: Labour force characteristics by province - Expanded definition of unemployment (concluded) ..	14
Table 3.1: Employed by industry and sex - South Africa	15
Table 3.2: Employed by industry and province	16
Table 3.2: Employed by industry and province (continued).....	17
Table 3.2: Employed by industry and province (continued).....	18
Table 3.2: Employed by industry and province (concluded)	19
Table 3.3: Employed by sector and industry - South Africa	20
Table 3.4: Employed by province and sector.....	21
Table 3.4: Employed by province and sector (concluded).....	22
Table 3.5: Employed by sex and occupation - South Africa	23
Table 3.6: Employed by sex and status in employment - South Africa.....	24
Table 3.7: Employed by sex and usual hours of work - South Africa	25
Table 3.8: Time-related underemployment - South Africa	26
Table 4: Characteristics of the unemployed - South Africa.....	27
Table 4: Characteristics of the unemployed - South Africa (concluded)	28
Table 5: Characteristics of the not economically active - South Africa	29
Table 6: Socio-demographic characteristics - South Africa	30
Table 6: Socio-demographic characteristics - South Africa (continued)	31
Table 6: Socio-demographic characteristics - South Africa (concluded)	32
Table 7: Involvement in non-market activities and labour market status by province.....	33
Table 7: Involvement in non-market activities and labour market status by province (continued).....	34
Table 7: Involvement in non-market activities and labour market status by province (concluded).....	35

Appendix 2A: Sampling variability for labour force characteristics by sex.....36

Appendix 2A: Sampling variability for labour force characteristics by sex (concluded)37

Appendix 2.1A: Sampling variability for labour force characteristics by population group.....38

Appendix 2.1A: Sampling variability for labour force characteristics by population group (concluded)39

Appendix 2.2A: Sampling variability for labour force characteristics by province40

Appendix 2.2A: Sampling variability for labour force characteristics by province41

Appendix 2.2A: Sampling variability for labour force characteristics by province42

Appendix 2.2A: Sampling variability for labour force characteristics by province43

Appendix 2.2A: Sampling variability for labour force characteristics by province (concluded)44

Appendix 3.1A: Sampling variability for the employed by industry and sex.....45

Appendix 3.4A: Sampling variability for the employed by province and sector46

Appendix 3.4A: Sampling variability for the employed by province and sector (concluded).....47

Appendix 3.5A: Sampling variability for the employed by sex and occupation48

Appendix 2B: Sampling variability for labour force characteristics by sex.....49

Appendix 2B: Sampling variability for labour force characteristics by sex (concluded)50

Appendix 2.1B: Sampling variability for labour force characteristics by population group.....51

Appendix 2.1B: Sampling variability for labour force characteristics by population group (concluded)52

Appendix 2.2B: Sampling variability for labour force characteristics by province53

Appendix 2.2B: Sampling variability for labour force characteristics by province54

Appendix 2.2B: Sampling variability for labour force characteristics by province55

Appendix 2.2B: Sampling variability for labour force characteristics by province56

Appendix 2.2B: Sampling variability for labour force characteristics by province (concluded)57

Appendix 3.1B: Sampling variability for the employed by industry and sex.....58

Appendix 3.4B: Sampling variability for the employed by province and sector59

Appendix 3.4B: Sampling variability for the employed by province and sector (concluded).....60

Appendix 3.5B: Sampling variability for the employed by sex and occupation61

1. Introduction

The Quarterly Labour Force Survey (QLFS) is a household-based sample survey conducted by Statistics South Africa (Stats SA). It collects data on the labour market activities of individuals aged 15 years and above who live in South Africa. However, this report only covers labour market activities of persons aged 15 to 64 years.

This report presents the key findings of the QLFS conducted in January–March, 2011 (Q1:2011).

2. Highlights of the results

Table A: Key labour market indicators

	Jan–Mar 2010	Oct–Dec 2010	Jan–Mar 2011	Qtr-to- qtr change	Year-on- year change	Qtr-to- qtr change	Year-on- year change
	Thousand				Per cent		
Population 15–64 yrs	31 818	32 193	32 314	121	496	0,4	1,6
Labour force	17 471	17 269	17 482	213	11	1,2	0,1
Employed	13 076	13 132	13 118	-14	42	-0,1	0,3
Formal sector (non-agricultural)	9 197	9 163	9 219	56	22	0,6	0,2
Informal sector (non-agricultural)	2 054	2 225	2 179	-46	125	-2,1	6,1
Agriculture	658	627	603	-24	-55	-3,8	-8,4
Private households	1 167	1 117	1 118	1	-49	0,1	-4,2
Unemployed	4 395	4 137	4 364	227	-31	5,5	-0,7
Not economically active	14 346	14 924	14 832	-92	486	-0,6	3,4
Discouraged work-seekers	1 870	2 150	2 223	73	353	3,4	18,9
Other (not economically active)	12 476	12 774	12 609	-165	133	-1,3	1,1
Rates (%)							
Unemployment rate	25,2	24,0	25,0	1,0	-0,2		
Employed / population ratio (absorption)	41,1	40,8	40,6	-0,2	-0,5		
Labour force participation rate	54,9	53,6	54,1	0,5	-0,8		

Due to rounding, numbers do not necessarily add up to totals.

The number of persons in the labour force increased by 213 000 between Q4:2010 and Q1:2011. Table A shows that employment decreased by 14 000 between Q4:2010 and Q1:2011 with the formal sector gaining 56 000 and informal sector losing 46 000 jobs respectively; while Agriculture lost 24 000, and employment in Private households remained virtually unchanged.

The number of unemployed persons increased by 227 000 between Q4:2010 and Q1:2011, while the number of discouraged work-seekers increased by 73 000 in the same period. The unemployment rate increased by 1,0 percentage point between Q4:2010 (24,0%) and Q1:2011 (25,0%).

Compared to Q1:2010, there was an annual increase of 0,3% (or 42 000) in employment, a decrease of 0,7% (or 31 000) in the number of unemployed persons, and an increase of 3,4% (or 486 000) in the number of persons who are not economically active – 353 000 of which were discouraged work-seekers.

3. Employment

Figure 1: Total employment, quarter 1: 2008 to quarter 1: 2011

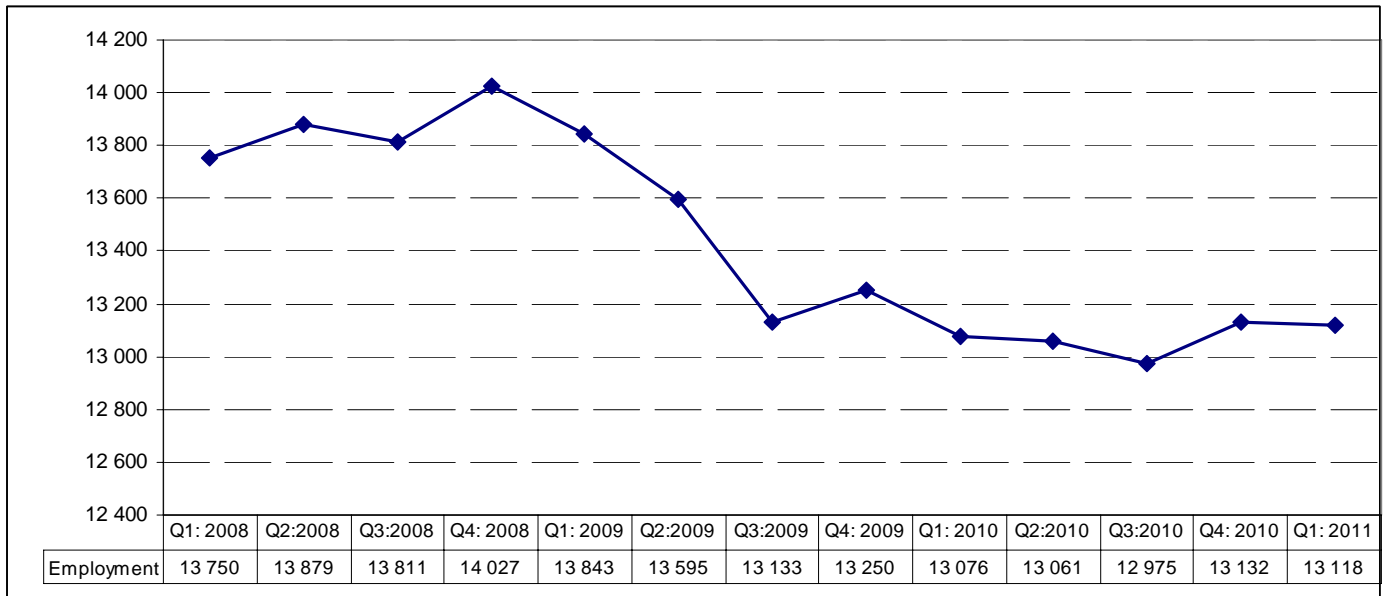


Figure 1 shows that the number of employed persons decreased from 13,1 million in Q1:2010 to 13 million in Q3:2010 after which there was an increase to about 13,1 million in Q4:2010 and a decrease of about 14 000 in Q1:2011.

Figure 2 below shows that employment traditionally declines in quarter 1. However, the decline of 14 000 in this quarter is substantially very low compared to the decline observed in Quarter 1 of 2009 and 2010, which was 208 000 and 174 000 respectively.

Figure 2: Quarter-to-quarter change in employment, quarter 1: 2008 to quarter 1: 2011

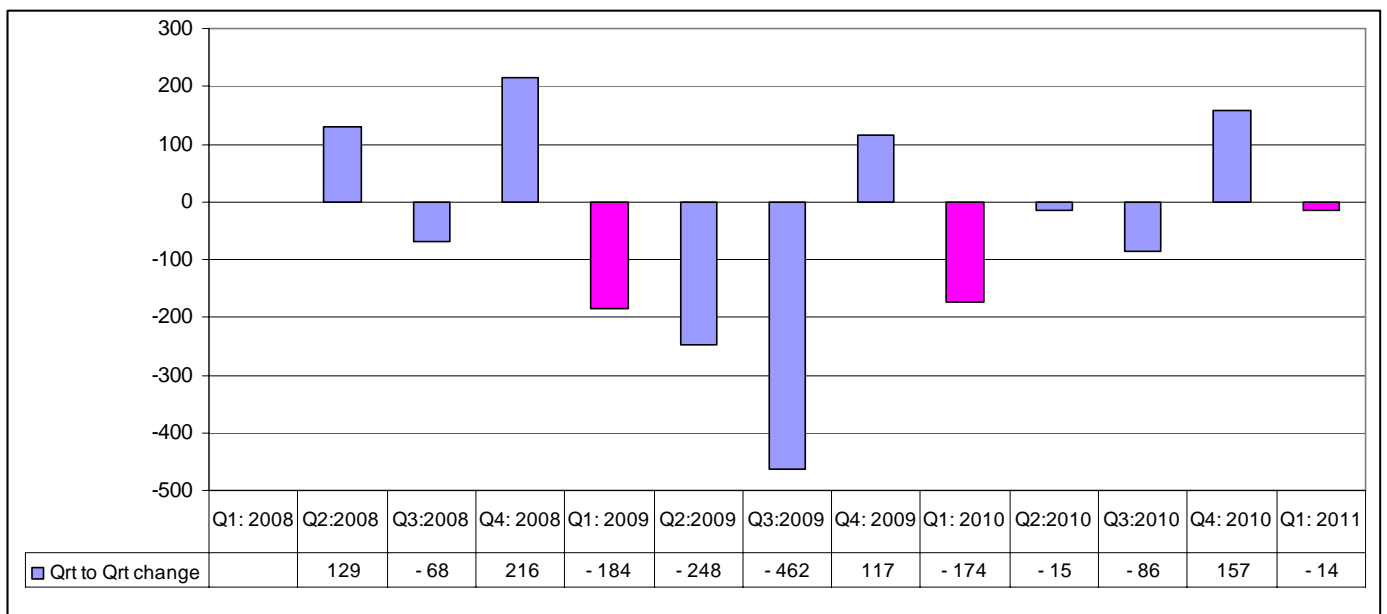


Table B: Employment by industry

	Jan-Mar 2010	Oct-Dec 2010	Jan-Mar 2011	Qrt to Qrt change	Year on year change	Qrt to Qrt change	Year on year change
	Thousand			Per cent			
Total	13 076	13 132	13 118	-14	42	-0,1	0,3
Agriculture	658	627	603	-24	-55	-3,8	-8,4
Mining	303	298	313	15	10	5,0	3,3
Manufacturing	1 755	1 783	1 803	20	48	1,1	2,7
Utilities	72	94	97	3	25	3,2	34,7
Construction	1 060	1 056	1 031	-25	-29	-2,4	-2,7
Trade	2 882	2 975	2 962	-13	80	-0,4	2,8
Transport	797	761	727	-34	-70	-4,5	-8,8
Finance and other business services	1 681	1 594	1 631	37	-50	2,3	-3,0
Community and social services	2 695	2 826	2 828	2	133	0,1	4,9
Private households	1 167	1 117	1 118	1	-49	0,1	-4,2

*Due to rounding, numbers do not necessarily add up to totals.

Table B indicates that between Q4:2010 and Q1:2011, some industries lost jobs while others created jobs, resulting in a net loss of 14 000 jobs across all industries. Most of the job losses were in Transport, which accounted for 34 000 of the job losses, followed by Construction (25 000), and Agriculture (24 000). Job gains were observed in Finance (37 000), Manufacturing (20 000) and Mining (15 000).

The year-on-year comparisons show an overall increase of 42 000 jobs, with Community and social services accounting for the biggest job gain (133 000), followed by Trade (80 000) and Manufacturing (48 000). Most job losses were experienced in Transport (70 000), Agriculture (55 000) and Finance (50 000).

Table C: Employment by province

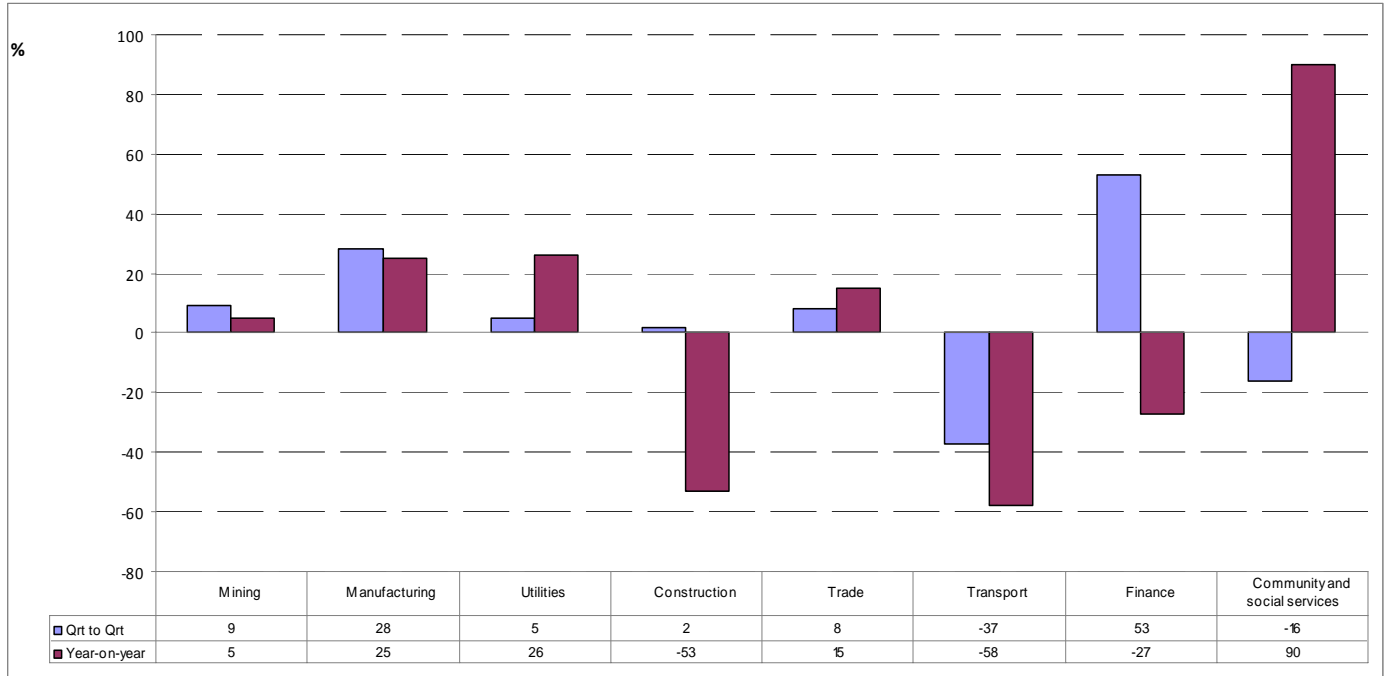
	Jan-Mar 2010	Oct-Dec 2010	Jan-Mar 2011	Qtr-to-qtr change	Year-on-year change	Qtr-to-qtr change	Year-on-year change
	Thousand			Per cent			
Total	13 076	13 132	13 118	-14	42	-0,1	0,3
Western Cape	1 837	1 772	1 784	12	-53	0,7	-2,9
Eastern Cape	1 267	1 328	1 325	-3	58	-0,2	4,6
Northern Cape	270	278	261	-17	-9	-6,1	-3,3
Free State	770	785	780	-5	10	-0,6	1,3
KwaZulu-Natal	2 488	2 439	2 429	-10	-59	-0,4	-2,4
North West	719	740	722	-18	3	-2,4	0,4
Gauteng	3 944	3 953	3 999	46	55	1,2	1,4
Mpumalanga	882	876	877	1	-5	0,1	-0,6
Limpopo	898	962	940	-22	42	-2,3	4,7

*Due to rounding, numbers do not necessarily add up to totals.

Table C shows that between Q4:2010 and Q1:2011, job losses were experienced in most provinces except Gauteng (46 000), Western Cape (12 000) and Mpumalanga, which remained virtually unchanged. The biggest job losses were recorded in Limpopo where 22 000 jobs were lost, followed by North West with 18 000 job losses and Northern Cape with 17 000 job losses. However the biggest impact is in the Northern Cape where they shed 6,1% of their employment.

The year-on-year comparisons (Q1:2010 and Q1:2011) show that KwaZulu-Natal and Western Cape were the hardest hit provinces in terms of job losses, with KwaZulu-Natal recording 59 000 job losses and Western Cape recording 53 000. However, job gains were observed in Eastern Cape (58 000) and Gauteng (55 000).

Figure 3: Changes in the formal sector employment by industry

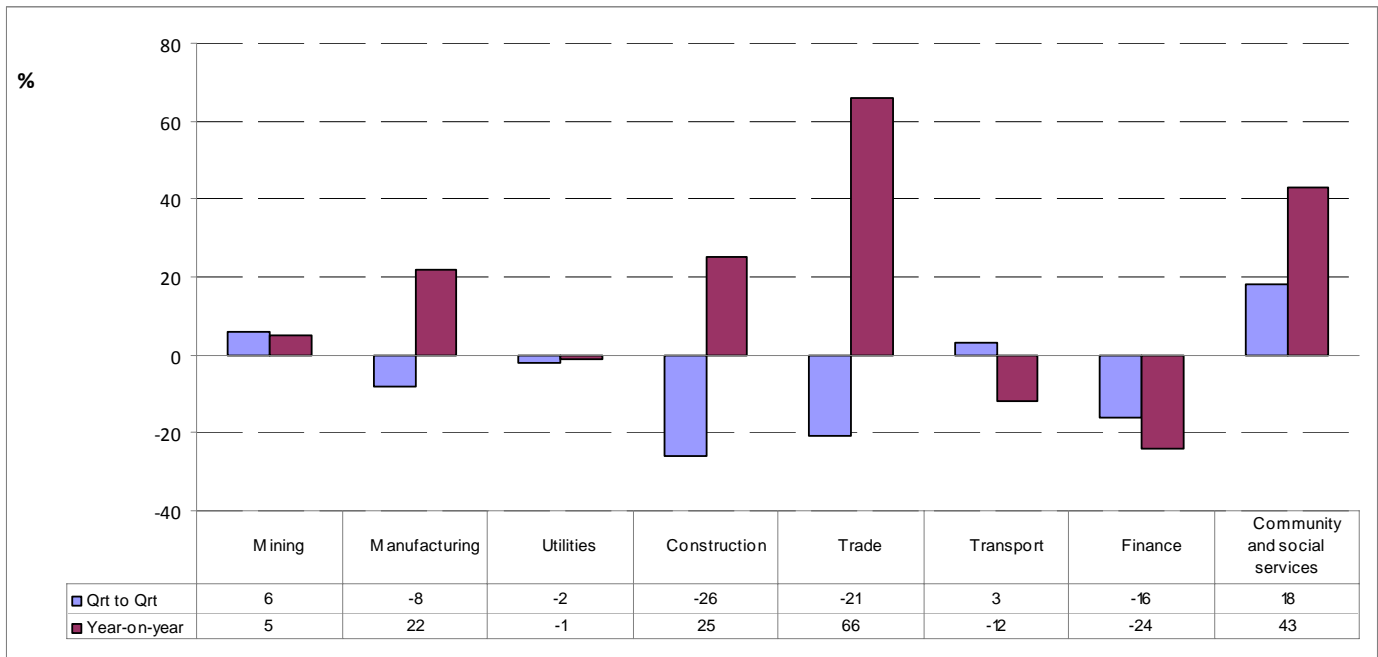


#QLFS mining figures are not robust and therefore the QES figures should be used.

Figure 3 shows that between Q4:2010 and Q1:2011 most of the jobs gained were in Finance and other business services (53 000) and Manufacturing (28 000). Transport and Community and social services were the only industries which recorded job losses (37 000 and 16 000 job losses respectively). This translated in a net gain of 56 000 jobs in the formal sector.

The year-on-year comparisons show that most job gains were recorded in Community and social services (90 000), Utilities (26 000) and Manufacturing (25 000) industries.

Figure 4: Changes in the informal sector employment by industry



#QLFS mining figures are not robust and therefore the QES figures should be used.

Figure 4 indicates that most industries lost informal sector jobs between Q4:2010 and Q1:2011 while a few gained some jobs. Most jobs were lost in Construction (26 000), Trade (21 000) and Finance (16 000); while some jobs were created in Community and social services (18 000) and Mining (6 000) resulting in a net loss of 46 000 jobs across all industries over a quarter.

Compared to Q1:2010, the informal sector gained 125 000 jobs in Q1:2011 with most of them being in Trade (66 000), Community and social services (43 000), Construction (25 000) and Manufacturing (22 000). Job losses were recorded in Finance (24 000) and Transport (12 000) in the same period.

Table D: Employment by occupation

	Jan–Mar 2010	Oct–Dec 2010	Jan–Mar 2011	Qtr-to-qtr change	Year-on-year change	Qtr-to-qtr change	Year-on-year change
	Thousand				Per cent		
Total	13 076	13 132	13 118	-14	42	-0,1	0,3
Manager	1 000	1 124	1 136	12	136	1,1	13,6
Professional	695	762	750	-12	55	-1,6	7,9
Technician	1 515	1 469	1 461	-8	-54	-0,5	-3,6
Clerk	1 477	1 434	1 341	-93	-136	-6,5	-9,2
Sales and services	1 852	1 882	1 904	22	52	1,2	2,8
Skilled agriculture	90	73	75	2	-15	2,7	-16,7
Craft and related trade	1 627	1 566	1 621	55	-6	3,5	-0,4
Plant and machine operator	1 091	1 125	1 134	9	43	0,8	3,9
Elementary	2 856	2 829	2 821	-8	-35	-0,3	-1,2
Domestic worker	873	869	877	8	4	0,9	0,5

*Due to rounding, numbers do not necessarily add up to totals.

The biggest job losses were observed among Clerks (93 000) and Professionals (12 000). However, job gains were observed among Crafts and related trade (55 000) and Sales and services (22 000) occupations.

The year-on-year comparisons show an overall job gain of 42 000. Most of the jobs were created in the Managerial (136 000), Professional (55 000) and Sales and services (52 000) occupations. Job losses were mainly observed in the Clerical (136 000), Technician (54 000) and Elementary (35 000) occupations.

4. The unemployed population

Table E: The unemployed by sex

Unemployed	Jan–Mar 2010	Oct–Dec 2010	Jan–Mar 2011	Qtr-to-qtr change	Year-on-year change	Qtr-to-qtr change	Year-on-year change
	Thousand				Per cent		
Total	4 395	4 137	4 364	227	-31	5,5	-0,7
Women	2 167	2 064	2 237	173	70	8,4	3,2
Men	2 228	2 073	2 126	53	-102	2,6	-4,6

*Due to rounding, numbers do not necessarily add up to totals.

The number of unemployed women and men increased by 173 000 and 53 000 respectively. This resulted in an overall increase of 227 000 in the number of unemployed persons in Q1:2011.

The year-on-year comparisons show that the number of unemployed persons decreased by 31 000. However, unemployment among women showed an increase of 70 000, while men showed a decrease of 102 000.

Figure 5: Unemployment rate by province

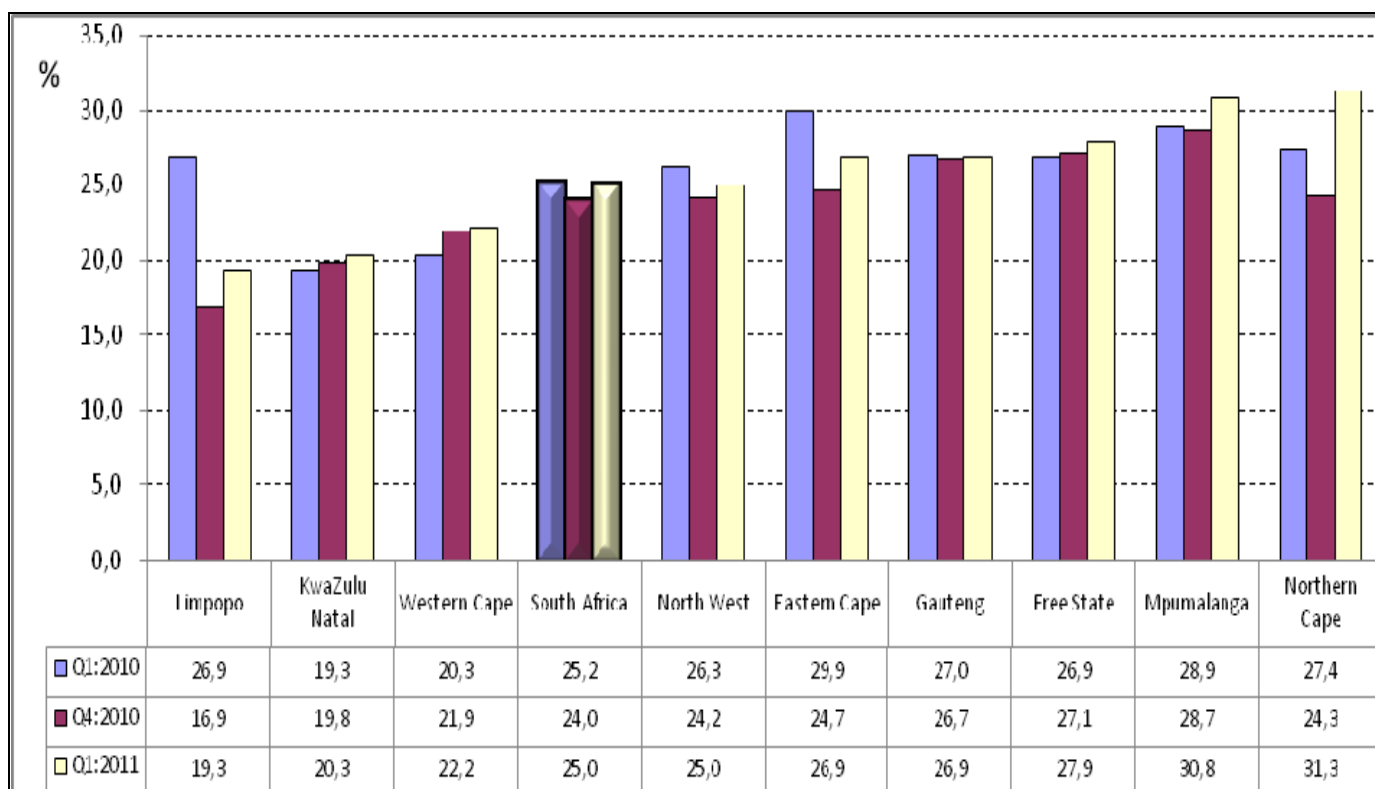


Figure 5 shows an increase in the unemployment rate in all the nine provinces in Q1:2011 compared to Q4:2010. The biggest increase in the unemployment rate was observed in Northern Cape (7,0 percentage points), Limpopo (2,4 percentage points), Eastern Cape (2,2 percentage points) and Mpumalanga (2,1 percentage points).

The comparisons between Q1:2010 and Q1:2011 indicate that there was a substantial decrease in the unemployment rate in Limpopo (down by 7,6 percentage points) and Eastern Cape (down by 3,0 percentage points). The provinces that experienced increase in the unemployment rate in the same period were Northern Cape (up by 3,9 percentage points), Western Cape and Mpumalanga (up by 1,9 percentage points each).

Figure 6: Unemployment rate by population group

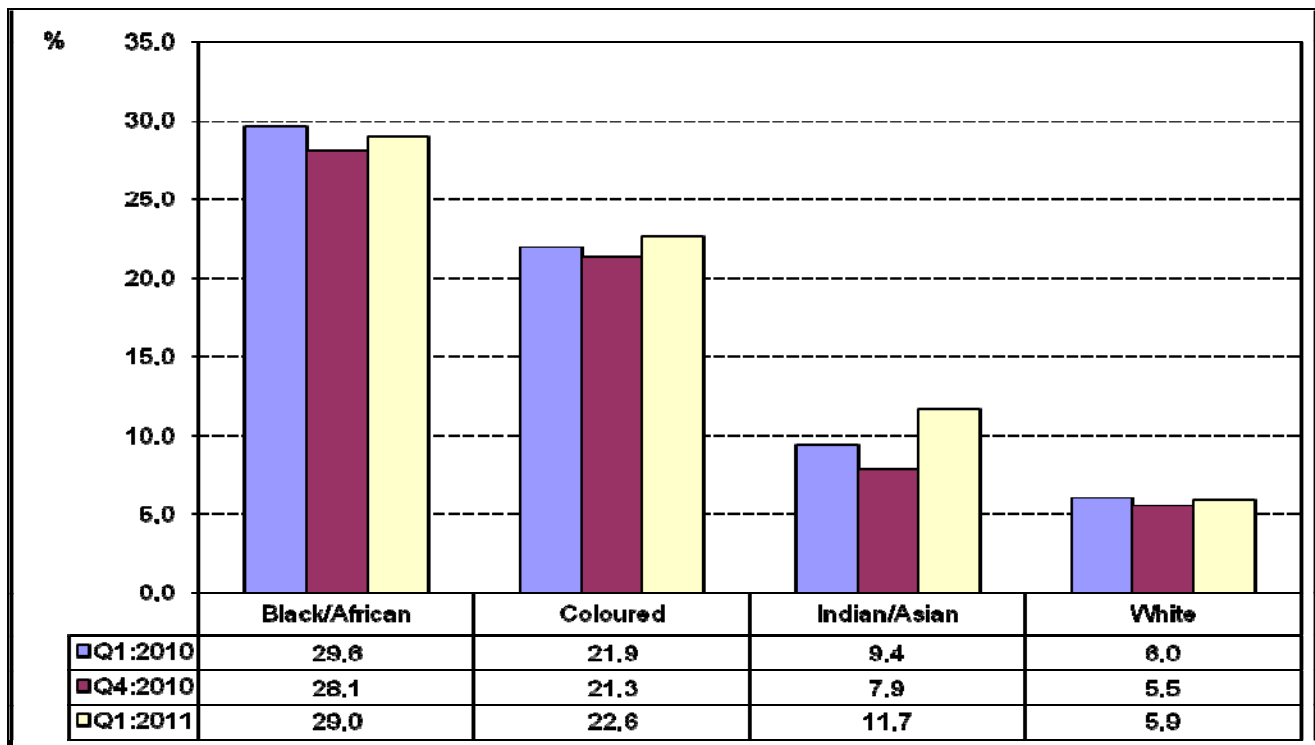


Figure 6 shows that between Q4:2010 and Q1:2011, the unemployment rate increased for all population groups, with the highest increase recorded in the Indian population group (3,8 percentage points), followed by coloured population with an increase of 1,3 percentage points.

The year-on-year comparisons show that the unemployment rate increased among Indian/Asian and coloured population groups and remained virtually unchanged among the black/Africans and white population.

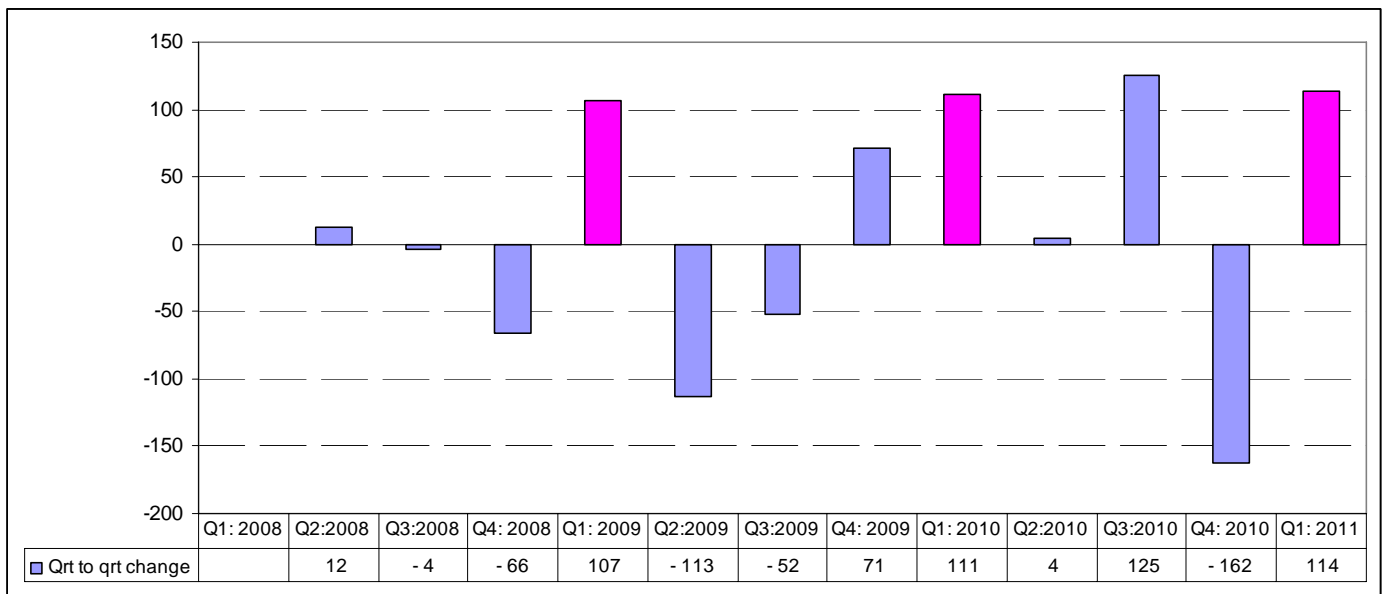
Table F: Characteristics of the unemployed

Unemployed	Jan–Mar 2010	Oct–Dec 2010	Jan–Mar 2011	Qtr-to-qtr change	Year-on-year change	Qtr-to-qtr change	Year-on-year change
	Thousand				Per cent		
Total	4 395	4 137	4 364	227	- 31	5,5	-0,7
Job losers	1 432	1 292	1 325	33	- 107	2,6	-7,5
Job leavers	289	253	270	17	- 19	6,7	-6,6
New entrants into the labour market	1 815	1 782	1 896	114	81	6,4	4,5
Re-entrants	214	171	189	18	- 25	10,5	-11,7
Other	646	639	684	45	38	7,0	5,9

Table F shows that between Q4:2010 and Q1:2011 there was an increase in the number of new entrants into the labour market (114 000), job losers (33 000), re-entrants (18 000) and job leavers (17 000). Among those who were unemployed, approximately 1,9 million were new entrants into the labour market which is 43,4% of the unemployed.

Compared to a year ago, the number of job losers decreased by 107 000, re-entrants decreased by 25 000 and job leavers decreased by 19 000, while the number of new entrants increased by 81 000 in Q1:2011.

Figure 7: Quarter to quarter changes in the number of new entrants, quarter 1: 2008 to quarter 1: 2011



As shown in Figure 7, a similar pattern is observed in all the first quarters of 2009, 2010 and 2011, where there is always an increase in the number of new entrants into the labour market who were unemployed. The new entrants are those who have never worked before but were currently looking for work.

5. Characteristics of the not economically active population

Table G: The not economically active

Not economically active	Jan–Mar 2010	Oct–Dec 2010	Jan–Mar 2011	Qtr-to-qtr change	Year-on-year change	Qtr-to-qtr change	Year-on-year change
	Thousand				Per cent		
Total	14 346	14 924	14 832	-92	486	-0,6	3,4
Student	5 874	6 251	6 083	-168	209	-2,7	3,6
Homemaker	2 784	2 929	2 882	-47	98	-1,6	3,5
Illness/disability	1 826	1 760	1 708	-52	-118	-3,0	-6,5
Too old/young to work	1 166	1 149	1 216	67	50	5,8	4,3
Discouraged	1 870	2 150	2 223	73	353	3,4	18,9
Other	826	686	719	33	-107	4,8	-13,0

Due to rounding, numbers do not necessarily add up to totals.

Table G shows that between Q4:2010 and Q1:2011, the number of students who were not economically active decreased by 168 000, individuals who were inactive due to disabilities or illness, and homemakers also decreased by 52 000 and 47 000 respectively. The number of discouraged work-seekers and individuals who were too old or too young to work increased by 73 000 and 67 000 respectively.

The year-on-year changes indicate that there was a net increase in the number of economically inactive persons (486 000 or 3,4%). An increase of 353 000 in discouraged work-seekers, 209 000 of students and 98 000 of homemakers and a decline of 118 000 in persons with illness or disability contributed to the net change.



PJ Lehohla
Statistician-General: Statistics South Africa

6. Technical notes

6.1. Response details

Table H: Response rates by province

Province	Jan–Mar 2011
	Per cent
Western Cape	81,9
Eastern Cape	98,9
Northern Cape	91,5
Free State	95,9
KwaZulu-Natal	97,4
North West	94,9
Gauteng	82,0
Mpumalanga	96,2
Limpopo	99,5
South Africa	92,9

6.2. Survey requirements and design

The Quarterly Labour Force Survey (QLFS) frame has been developed as a general-purpose household survey frame that can be used by all other household surveys irrespective of the sample size requirement of the survey. The sample size for the QLFS is roughly 30 000 dwellings per quarter.

The sample is based on information collected during the 2001 Population Census conducted by Stats SA. In preparation for the 2001 Census, the country was divided into 80 787 enumeration areas (EAs). Stats SA's household-based surveys use a master sample of primary sampling units (PSUs) which comprises EAs that are drawn from across the country.

The sample is designed to be representative at provincial level and within provinces at metro/non-metro level. Within the metros, the sample is further distributed by geography type. The four geography types are: urban formal, urban informal, farms and tribal. This implies, for example, that within a metropolitan area the sample is representative at the different geography types that may exist within that metro.

The current sample size is 3 080 PSUs. It is divided equally into four subgroups or panels called rotation groups. The rotation groups are designed in such a way that each of these groups has the same distribution pattern as that which is observed in the whole sample. They are numbered from one to four and these numbers also correspond to the quarters of the year in which the sample will be rotated for the particular group.

The sample for the redesigned Labour Force Survey (i.e. the QLFS) is based on a stratified two-stage design with probability proportional to size (PPS) sampling of PSUs in the first stage, and sampling of dwelling units (DUs) with systematic sampling in the second stage.

6.3. Sample rotation

Each quarter, a ¼ of the sampled dwellings rotate out of the sample and are replaced by new dwellings from the same PSU or the next PSU on the list. Thus, sampled dwellings will remain in the sample for four consecutive quarters. It should be noted that the sampling unit is the dwelling, and the unit of observation is the household. Therefore, if a household moves out of a dwelling after being in the sample for, say two quarters, and a new household moves in, the new household will be enumerated for the next two quarters. If no household moves into the sampled dwelling, the dwelling will be classified as vacant (unoccupied).

6.4. Weighting

The sampling weights for the data collected from the sampled households are constructed in such a manner that the responses could be properly expanded to represent the entire civilian population of South Africa. The weights are the result of calculations involving several factors, including original selection

probabilities, adjustment for non-response, and benchmarking to known population estimates from the Demographic division of Stats SA.

6.5. Non-response adjustment

In general, imputation is used for item non-response (i.e. blanks within the questionnaire) and edit failure (i.e. invalid or inconsistent responses). The eligible households in the sampled dwellings can be divided into two response categories: respondents and non-respondents; and weight adjustment is applied to account for the non-respondent households (e.g. refusal, no contact, etc.).

6.6. Final survey weights

The final survey weights are constructed using regression estimation to calibrate to the known population counts at the national level population estimates (which are supplied by the Demography division) cross-classified by 5-year age groups, gender and race, and provincial population estimates by broad age groups. The 5-year age groups are: 0–4, 5–9, 10–14, etc., and 65 years and over. The provincial-level age groups are: 0–14, 15–34, 35–64, and 65 years and over. The calibrated weights are constructed such that all persons in a household would have the same final weight.

6.7. Estimation

The final survey weights are used to obtain the estimates for various domains of interest, e.g. number of persons employed in agriculture in the province of Western Cape, number of females employed in manufacturing, etc.

6.8. Reliability of the survey estimates

Because estimates are based on sample data, they differ from figures that would have been obtained from complete enumeration of the population using the same instrument. Results are subject to both sampling and non-sampling errors. Non-sampling errors include biases from inaccurate reporting, processing, and tabulation, etc., as well as errors from non-response and incomplete reporting. These types of errors cannot be measured readily. However, to the extent possible, non-sampling errors can be minimised through the procedures used for data collection, editing, quality control, and non-response adjustment. The variances of the survey estimates are used to measure sampling errors. The variance estimation methodology is discussed below.

(i) Variance estimation

The most commonly used methods for estimating variances of survey estimates from complex surveys such as the QLFS, are the Taylor-series Linearization, Jackknife Replication, Balanced Repeated Replication (BRR), and Bootstrap methods (Wolter, 2007)¹. The Fay's BRR method has been used for variance estimation in the QLFS because of its simplicity.

(ii) Coefficient of variation

It is more useful in many situations to assess the size of the standard error relative to the magnitude of the characteristic being measured (the standard error is defined as the square root of the variance). The **coefficient of variation** (cv) provides such a measure. It is the **ratio of the standard error of the survey estimate to the value of the estimate itself expressed as a percentage**. It is very useful in comparing the precision of several different survey estimates, where their sizes or scale differ from one another.

(iii) P-value of an estimate of change

The p-value corresponding to an estimate of change is the probability of observing a value larger than the particular observed value under the hypothesis that there is no real change. If p-value < 0,01, the difference is highly significant; if p-value is between 0,01 and 0,05, the difference is significant; and if p-value > 0,05, the difference is not significant.

¹ Wolter KM, 2007. *Introduction to Variance Estimation, 2nd Edition*. New York: Springer-Verlag.

7. Definitions

Discouraged work-seeker is a person who was not employed during the reference period, wanted to work, was available to work/start a business but did not take active steps to find work during the last four weeks, provided that the main reason given for not seeking work was any of the following: no jobs available in the area; unable to find work requiring his/her skills; lost hope of finding any kind of work.

Economic activities are those that contribute to the production of goods and services in the country. There are two types of economic activities, and they are: (1) Market production activities (work done for others and usually associated with pay or profit); and (2) Non-market production activities (work done for the benefit of the household, e.g. subsistence farming).

Employed persons are those aged 15–64 years who, during the reference week: did any work for at least one hour; or had a job or business but were not at work (temporarily absent).

Employment-to-population ratio (labour absorption rate) is the proportion of the working-age population that is employed.

Informal employment identifies persons who are in precarious employment situations irrespective of whether or not the entity for which they work is in the formal or informal sector. Persons in informal employment therefore consist of all persons in the informal sector; employees in the formal sector; and persons working in private households who are not entitled to basic benefits such as pension or medical aid contributions from their employer, and who do not have a written contract of employment.

Informal sector: The informal sector has the following two components:

- i) Employees working in establishments that employ less than five employees, who do not deduct income tax from their salaries/wages; and
- ii) Employers, own-account workers and persons helping unpaid in their household business who are not registered for either income tax or value-added tax.

The **labour force** comprises all persons who are employed plus all persons who are unemployed.

Labour force participation rate is the proportion of the working-age population that is either employed or unemployed.

Long-term unemployment: Persons in long-term unemployment are those individuals among the unemployed who were without work and trying to find a job or start a business for one year or more.

Not economically active: Persons aged 15–64 years who are neither employed nor unemployed in the reference week.

Persons in **underemployment (time-related)** are employed persons who were willing and available to work additional hours, whose total number of hours actually worked during the reference period was below 35 hours per week.

Underutilised labour comprises three groups as follows: persons who are underemployed, persons who are unemployed, and persons who are discouraged.

Unemployed persons are those (aged 15–64 years) who:

- a) Were not employed in the reference week **and**;
- b) Actively looked for work or tried to start a business in the four weeks preceding the survey interview **and**;
- c) Were available for work, i.e. would have been able to start work or a business in the reference week **or**;
- d) Had not actively looked for work in the past four weeks but had a job or business to start at a definite date in the future and were available.

Unemployment rate is the proportion of the labour force that is unemployed.

The **working-age population** comprises all persons aged 15–64 years.

Appendix 1

Table 1: Population of working age (15-64 years)									
	Jan-Mar 2010	Apr-Jun 2010	Jul-Sep 2010	Oct-Dec 2010	Jan-Mar 2011	Qrt to Qrt change	Year on year change	Qrt to Qrt change	Year on year change
	Thousand	Thousand	Thousand	Thousand	Thousand	Thousand	Thousand	Percent	Percent
Both sexes	31 818	31 946	32 072	32 193	32 314	121	496	0,4	1,6
Women	16 422	16 481	16 537	16 589	16 642	53	220	0,3	1,3
Men	15 396	15 465	15 536	15 604	15 672	68	276	0,4	1,8
Population groups	31 818	31 946	32 072	32 193	32 314	121	496	0,4	1,6
Black/African	24 796	24 913	25 033	25 149	25 265	116	469	0,5	1,9
Coloured	2 983	2 994	3 003	3 012	3 021	9	38	0,3	1,3
Indian/Asian	906	910	914	918	922	4	16	0,4	1,8
White	3 133	3 130	3 122	3 114	3 106	-8	-27	-0,3	-0,9
South Africa	31 818	31 946	32 072	32 193	32 314	121	496	0,4	1,6
Western Cape	3 363	3 376	3 390	3 403	3 417	14	54	0,4	1,6
Eastern Cape	4 102	4 117	4 131	4 143	4 155	12	53	0,3	1,3
Northern Cape	709	711	713	715	717	2	8	0,3	1,1
Free State	1 853	1 856	1 860	1 863	1 867	4	14	0,2	0,8
KwaZulu Natal	6 604	6 635	6 664	6 692	6 720	28	116	0,4	1,8
North West	2 007	2 013	2 019	2 025	2 031	6	24	0,3	1,2
Gauteng	7 642	7 672	7 702	7 732	7 763	31	121	0,4	1,6
Mpumalanga	2 277	2 287	2 297	2 307	2 316	9	39	0,4	1,7
Limpopo	3 261	3 279	3 296	3 313	3 329	16	68	0,5	2,1

Table 2: Labour force characteristics by sex - All population groups									
	Jan-Mar 2010	Apr-Jun 2010	Jul-Sep 2010	Oct-Dec 2010	Jan-Mar 2011	Qrt to Qrt change	Year on year change	Qrt to Qrt change	Year on year change
	Thousand	Thousand	Thousand	Thousand	Thousand	Thousand	Thousand	Percent	Percent
Both sexes									
Population 15-64 yrs	31 818	31 946	32 072	32 193	32 314	121	496	0,4	1,6
Labour Force	17 471	17 462	17 371	17 269	17 482	213	11	1,2	0,1
Employed	13 076	13 061	12 975	13 132	13 118	-14	42	-0,1	0,3
Formal sector (Non-agricultural)	9 197	9 088	9 043	9 163	9 219	56	22	0,6	0,2
Informal sector (Non-agricultural)	2 054	2 186	2 172	2 225	2 179	-46	125	-2,1	6,1
Agriculture	658	630	640	627	603	-24	-55	-3,8	-8,4
Private households	1 167	1 157	1 119	1 117	1 118	1	-49	0,1	-4,2
Unemployed	4 395	4 401	4 396	4 137	4 364	227	-31	5,5	-0,7
Not economically active	14 346	14 485	14 702	14 924	14 832	-92	486	-0,6	3,4
Discouraged work-seekers	1 870	1 938	2 033	2 150	2 223	73	353	3,4	18,9
Other(not economically active)	12 476	12 547	12 669	12 774	12 609	-165	133	-1,3	1,1
Rates (%)									
Unemployment rate	25,2	25,2	25,3	24,0	25,0	1,0	-0,2		
Employed / population ratio (Absorption)	41,1	40,9	40,5	40,8	40,6	-0,2	-0,5		
Labour force participation rate	54,9	54,7	54,2	53,6	54,1	0,5	-0,8		
Women									
Population 15-64 yrs	16 422	16 481	16 537	16 589	16 642	53	220	0,3	1,3
Labour Force	7 877	7 853	7 784	7 762	7 926	164	49	2,1	0,6
Employed	5 710	5 675	5 601	5 698	5 688	-10	-22	-0,2	-0,4
Formal sector (Non-agricultural)	3 704	3 629	3 619	3 711	3 703	-8	-1	-0,2	0,0
Informal sector (Non-agricultural)	879	934	902	922	915	-7	36	-0,8	4,1
Agriculture	243	215	202	209	208	-1	-35	-0,5	-14,4
Private households	884	897	879	856	863	7	-21	0,8	-2,4
Unemployed	2 167	2 177	2 183	2 064	2 237	173	70	8,4	3,2
Not economically active	8 545	8 628	8 752	8 827	8 716	-111	171	-1,3	2,0
Discouraged work-seekers	1 052	1 078	1 156	1 197	1 235	38	183	3,2	17,4
Other(not economically active)	7 493	7 550	7 597	7 630	7 481	-149	-12	-2,0	-0,2
Rates (%)									
Unemployment rate	27,5	27,7	28,0	26,6	28,2	1,6	0,7		
Employed / population ratio (Absorption)	34,8	34,4	33,9	34,3	34,2	-0,1	-0,6		
Labour force participation rate	48,0	47,6	47,1	46,8	47,6	0,8	-0,4		

Due to rounding, numbers do not necessarily add up to totals.

Note: Employment refers to market production activities.

Table 2: Labour force characteristics by sex - All population groups (concluded)									
	Jan-Mar 2010	Apr-Jun 2010	Jul-Sep 2010	Oct-Dec 2010	Jan-Mar 2011	Qrt to Qrt change	Year on year change	Qrt to Qrt change	Year on year change
	Thousand	Thousand	Thousand	Thousand	Thousand	Thousand	Thousand	Percent	Percent
Men									
Population 15-64 yrs	15 396	15 465	15 536	15 604	15 672	68	276	0,4	1,8
Labour Force	9 595	9 609	9 587	9 507	9 556	49	-39	0,5	-0,4
Employed	7 367	7 385	7 373	7 434	7 430	-4	63	-0,1	0,9
Formal sector (Non-agricultural)	5 493	5 459	5 424	5 452	5 516	64	23	1,2	0,4
Informal sector (Non-agricultural)	1 175	1 252	1 270	1 303	1 264	-39	89	-3,0	7,6
Agriculture	415	415	438	418	395	-23	-20	-5,5	-4,8
Private households	284	259	241	261	255	-6	-29	-2,3	-10,2
Unemployed	2 228	2 224	2 214	2 073	2 126	53	-102	2,6	-4,6
Not economically active	5 801	5 856	5 949	6 097	6 115	18	314	0,3	5,4
Discouraged work-seekers	818	860	877	953	988	35	170	3,7	20,8
Other(not economically active)	4 983	4 996	5 072	5 144	5 128	-16	145	-0,3	2,9
Rates (%)									
Unemployment rate	23,2	23,1	23,1	21,8	22,2	0,4	-1,0		
Employed / population ratio (Absorption)	47,9	47,8	47,5	47,6	47,4	-0,2	-0,5		
Labour force participation rate	62,3	62,1	61,7	60,9	61,0	0,1	-1,3		

Due to rounding, numbers do not necessarily add up to totals.

Note: Employment refers to market production activities.

Table 2.1: Labour force characteristics by population group									
	Jan-Mar 2010	Apr-Jun 2010	Jul-Sep 2010	Oct-Dec 2010	Jan-Mar 2011	Qrt to Qrt change	Year on year change	Qrt to Qrt change	Year on year change
	Thousand	Thousand	Thousand	Thousand	Thousand	Thousand	Thousand	Percent	Percent
South Africa									
Population 15-64 yrs	31 818	31 946	32 072	32 193	32 314	121	496	0,4	1,6
Labour Force	17 471	17 462	17 371	17 269	17 482	213	11	1,2	0,1
Employed	13 076	13 061	12 975	13 132	13 118	-14	42	-0,1	0,3
Unemployed	4 395	4 401	4 396	4 137	4 364	227	-31	5,5	-0,7
Not economically active	14 346	14 485	14 702	14 924	14 832	-92	486	-0,6	3,4
Rates (%)									
Unemployment rate	25,2	25,2	25,3	24,0	25,0	1,0	-0,2		
Employed / population ratio (Absorption)	41,1	40,9	40,5	40,8	40,6	-0,2	-0,5		
Labour force participation rate	54,9	54,7	54,2	53,6	54,1	0,5	-0,8		
Black/African									
Population 15-64 yrs	24 796	24 913	25 033	25 149	25 265	116	469	0,5	1,9
Labour Force	12 808	12 846	12 788	12 724	12 898	174	90	1,4	0,7
Employed	9 021	9 071	8 975	9 149	9 158	9	137	0,1	1,5
Unemployed	3 787	3 775	3 813	3 575	3 740	165	-47	4,6	-1,2
Not economically active	11 988	12 067	12 245	12 425	12 367	-58	379	-0,5	3,2
Rates (%)									
Unemployment rate	29,6	29,4	29,8	28,1	29,0	0,9	-0,6		
Employed / population ratio (Absorption)	36,4	36,4	35,9	36,4	36,2	-0,2	-0,2		
Labour force participation rate	51,7	51,6	51,1	50,6	51,1	0,5	-0,6		
Coloured									
Population 15-64 yrs	2 983	2 994	3 003	3 012	3 021	9	38	0,3	1,3
Labour Force	1 947	1 920	1 917	1 885	1 931	46	-16	2,4	-0,8
Employed	1 521	1 487	1 490	1 484	1 495	11	-26	0,7	-1,7
Unemployed	426	433	427	401	436	35	10	8,7	2,3
Not economically active	1 036	1 074	1 086	1 126	1 090	-36	54	-3,2	5,2
Rates (%)									
Unemployment rate	21,9	22,6	22,3	21,3	22,6	1,3	0,7		
Employed / population ratio (Absorption)	51,0	49,7	49,6	49,3	49,5	0,2	-1,5		
Labour force participation rate	65,3	64,1	63,8	62,6	63,9	1,3	-1,4		

Due to rounding, numbers do not necessarily add up to totals.

Note: Employment refers to market production activities.

Table 2.1: Labour force characteristics by population group (concluded)									
	Jan-Mar 2010	Apr-Jun 2010	Jul-Sep 2010	Oct-Dec 2010	Jan-Mar 2011	Qrt to Qrt change	Year on year change	Qrt to Qrt change	Year on year change
	Thousand	Thousand	Thousand	Thousand	Thousand	Thousand	Thousand	Percent	Percent
Indian/Asian									
Population 15-64 yrs	906	910	914	918	922	4	16	0,4	1,8
Labour Force	533	550	568	559	548	-11	15	-2,0	2,8
Employed	483	494	518	514	484	-30	1	-5,8	0,2
Unemployed	50	56	49	44	64	20	14	45,5	28,0
Not economically active	374	361	347	360	374	14	0	3,9	0,0
Rates (%)									
Unemployment rate	9,4	10,2	8,6	7,9	11,7	3,8	2,3		
Employed / population ratio (Absorption)	53,3	54,3	56,7	56,0	52,5	-3,5	-0,8		
Labour force participation rate	58,8	60,4	62,0	60,8	59,4	-1,4	0,6		
White									
Population 15-64 yrs	3 133	3 130	3 122	3 114	3 106	-8	-27	-0,3	-0,9
Labour Force	2 183	2 146	2 098	2 101	2 105	4	-78	0,2	-3,6
Employed	2 051	2 009	1 991	1 985	1 981	-4	-70	-0,2	-3,4
Unemployed	132	137	107	116	124	8	-8	6,9	-6,1
Not economically active	949	983	1 024	1 013	1 001	-12	52	-1,2	5,5
Rates (%)									
Unemployment rate	6,0	6,4	5,1	5,5	5,9	0,4	-0,1		
Employed / population ratio (Absorption)	65,5	64,2	63,8	63,7	63,8	0,1	-1,7		
Labour force participation rate	69,7	68,6	67,2	67,5	67,8	0,3	-1,9		

Due to rounding, numbers do not necessarily add up to totals.

Note: Employment refers to market production activities.

Table 2.2: Labour force characteristics by province									
	Jan-Mar 2010	Apr-Jun 2010	Jul-Sep 2010	Oct-Dec 2010	Jan-Mar 2011	Qrt to Qrt change	Year on year change	Qrt to Qrt change	Year on year change
	Thousand	Thousand	Thousand	Thousand	Thousand	Thousand	Thousand	Percent	Percent
South Africa									
Population 15-64 yrs	31 818	31 946	32 072	32 193	32 314	121	496	0,4	1,6
Labour Force	17 471	17 462	17 371	17 269	17 482	213	11	1,2	0,1
Employed	13 076	13 061	12 975	13 132	13 118	-14	42	-0,1	0,3
Unemployed	4 395	4 401	4 396	4 137	4 364	227	-31	5,5	-0,7
Not economically active	14 346	14 485	14 702	14 924	14 832	-92	486	-0,6	3,4
Discouraged work-seekers	1 870	1 938	2 033	2 150	2 223	73	353	3,4	18,9
Other	12 476	12 547	12 669	12 774	12 609	-165	133	-1,3	1,1
Rates (%)									
Unemployment rate	25,2	25,2	25,3	24,0	25,0	1,0	-0,2		
Employed / population ratio (Absorption)	41,1	40,9	40,5	40,8	40,6	-0,2	-0,5		
Labour force participation rate	54,9	54,7	54,2	53,6	54,1	0,5	-0,8		
Western Cape									
Population 15-64 yrs	3 363	3 376	3 390	3 403	3 417	14	54	0,4	1,6
Labour Force	2 305	2 294	2 281	2 271	2 295	24	-10	1,1	-0,4
Employed	1 837	1 793	1 754	1 772	1 784	12	-53	0,7	-2,9
Unemployed	468	501	527	498	510	12	42	2,4	9,0
Not economically active	1 058	1 082	1 109	1 132	1 122	-10	64	-0,9	6,0
Discouraged work-seekers	48	55	38	24	19	-5	-29	-20,8	-60,4
Other	1 010	1 027	1 071	1 108	1 102	-6	92	-0,5	9,1
Rates (%)									
Unemployment rate	20,3	21,8	23,1	21,9	22,2	0,3	1,9		
Employed / population ratio (Absorption)	54,6	53,1	51,7	52,1	52,2	0,1	-2,4		
Labour force participation rate	68,5	68,0	67,3	66,7	67,1	0,4	-1,4		

Due to rounding, numbers do not necessarily add up to totals.

Note: Employment refers to market production activities.

Table 2.2: Labour force characteristics by province (continued)									
	Jan-Mar 2010	Apr-Jun 2010	Jul-Sep 2010	Oct-Dec 2010	Jan-Mar 2011	Qrt to Qrt change	Year on year change	Qrt to Qrt change	Year on year change
	Thousand	Thousand	Thousand	Thousand	Thousand	Thousand	Thousand	Percent	Percent
Eastern Cape									
Population 15-64 yrs	4 102	4 117	4 131	4 143	4 155	12	53	0,3	1,3
Labour Force	1 808	1 767	1 793	1 763	1 812	49	4	2,8	0,2
Employed	1 267	1 274	1 306	1 328	1 325	-3	58	-0,2	4,6
Unemployed	541	493	487	435	487	52	-54	12,0	-10,0
Not economically active	2 294	2 350	2 337	2 380	2 343	-37	49	-1,6	2,1
Discouraged work-seekers	363	382	344	371	368	-3	5	-0,8	1,4
Other	1 931	1 969	1 993	2 009	1 975	-34	44	-1,7	2,3
Rates (%)									
Unemployment rate	29,9	27,9	27,2	24,7	26,9	2,2	-3,0		
Employed / population ratio (Absorption)	30,9	30,9	31,6	32,1	31,9	-0,2	1,0		
Labour force participation rate	44,1	42,9	43,4	42,6	43,6	1,0	-0,5		
Northern Cape									
Population 15-64 yrs	709	711	713	715	717	2	8	0,3	1,1
Labour Force	372	371	372	367	381	14	9	3,8	2,4
Employed	270	260	276	278	261	-17	-9	-6,1	-3,3
Unemployed	102	111	96	89	119	30	17	33,7	16,7
Not economically active	337	340	341	348	336	-12	-1	-3,4	-0,3
Discouraged work-seekers	47	39	37	37	38	1	-9	2,7	-19,1
Other	290	301	304	311	299	-12	9	-3,9	3,1
Rates (%)									
Unemployment rate	27,4	29,9	25,8	24,3	31,3	7,0	3,9		
Employed / population ratio (Absorption)	38,1	36,6	38,7	38,9	36,4	-2,5	-1,7		
Labour force participation rate	52,5	52,2	52,2	51,3	53,0	1,7	0,5		

Due to rounding, numbers do not necessarily add up to totals.

Note: Employment refers to market production activities.

Table 2.2: Labour force characteristics by province (continued)									
	Jan-Mar 2010	Apr-Jun 2010	Jul-Sep 2010	Oct-Dec 2010	Jan-Mar 2011	Qrt to Qrt change	Year on year change	Qrt to Qrt change	Year on year change
	Thousand	Thousand	Thousand	Thousand	Thousand	Thousand	Thousand	Percent	Percent
Free State									
Population 15-64 yrs	1 853	1 856	1 860	1 863	1 867	4	14	0,2	0,8
Labour Force	1 054	1 078	1 091	1 077	1 082	5	28	0,5	2,7
Employed	770	778	768	785	780	-5	10	-0,6	1,3
Unemployed	284	300	322	292	302	10	18	3,4	6,3
Not economically active	798	778	769	787	785	-2	-13	-0,3	-1,6
Discouraged work-seekers	101	85	85	82	87	5	-14	6,1	-13,9
Other	698	692	684	705	698	-7	0	-1,0	0,0
Rates (%)									
Unemployment rate	26,9	27,8	29,5	27,1	27,9	0,8	1,0		
Employed / population ratio (Absorption)	41,6	41,9	41,3	42,1	41,8	-0,3	0,2		
Labour force participation rate	56,9	58,1	58,6	57,8	58,0	0,2	1,1		
KwaZulu Natal									
Population 15-64 yrs	6 604	6 635	6 664	6 692	6 720	28	116	0,4	1,8
Labour Force	3 084	3 081	2 990	3 040	3 049	9	-35	0,3	-1,1
Employed	2 488	2 436	2 401	2 439	2 429	-10	-59	-0,4	-2,4
Unemployed	596	645	588	601	620	19	24	3,2	4,0
Not economically active	3 520	3 553	3 674	3 652	3 671	19	151	0,5	4,3
Discouraged work-seekers	503	504	563	540	592	52	89	9,6	17,7
Other	3 017	3 050	3 111	3 112	3 079	-33	62	-1,1	2,1
Rates (%)									
Unemployment rate	19,3	20,9	19,7	19,8	20,3	0,5	1,0		
Employed / population ratio (Absorption)	37,7	36,7	36,0	36,4	36,1	-0,3	-1,6		
Labour force participation rate	46,7	46,4	44,9	45,4	45,4	0,0	-1,3		

Due to rounding, numbers do not necessarily add up to totals.

Note: Employment refers to market production activities.

Table 2.2: Labour force characteristics by province (continued)									
	Jan-Mar 2010	Apr-Jun 2010	Jul-Sep 2010	Oct-Dec 2010	Jan-Mar 2011	Qrt to Qrt change	Year on year change	Qrt to Qrt change	Year on year change
	Thousand	Thousand	Thousand	Thousand	Thousand	Thousand	Thousand	Percent	Percent
North West									
Population 15-64 yrs	2 007	2 013	2 019	2 025	2 031	6	24	0,3	1,2
Labour Force	977	1 003	991	976	963	-13	-14	-1,3	-1,4
Employed	719	722	714	740	722	-18	3	-2,4	0,4
Unemployed	257	280	277	236	241	5	-16	2,1	-6,2
Not economically active	1 030	1 011	1 029	1 049	1 068	19	38	1,8	3,7
Discouraged work-seekers	130	150	138	187	178	-9	48	-4,8	36,9
Other	901	860	891	862	890	28	-11	3,2	-1,2
Rates (%)									
Unemployment rate	26,3	27,9	28,0	24,2	25,0	0,8	-1,3		
Employed / population ratio (Absorption)	35,8	35,9	35,4	36,5	35,5	-1,0	-0,3		
Labour force participation rate	48,6	49,8	49,1	48,2	47,4	-0,8	-1,2		
Gauteng									
Population 15-64 yrs	7 642	7 672	7 702	7 732	7 763	31	121	0,4	1,6
Labour Force	5 402	5 404	5 402	5 391	5 467	76	65	1,4	1,2
Employed	3 944	3 950	3 958	3 953	3 999	46	55	1,2	1,4
Unemployed	1 458	1 454	1 444	1 438	1 469	31	11	2,2	0,8
Not economically active	2 240	2 268	2 300	2 341	2 295	-46	55	-2,0	2,5
Discouraged work-seekers	248	254	312	309	319	10	71	3,2	28,6
Other	1 991	2 014	1 988	2 032	1 976	-56	-15	-2,8	-0,8
Rates (%)									
Unemployment rate	27,0	26,9	26,7	26,7	26,9	0,2	-0,1		
Employed / population ratio (Absorption)	51,6	51,5	51,4	51,1	51,5	0,4	-0,1		
Labour force participation rate	70,7	70,4	70,1	69,7	70,4	0,7	-0,3		

Due to rounding, numbers do not necessarily add up to totals.

Note: Employment refers to market production activities.

Table 2.2: Labour force characteristics by province (concluded)									
	Jan-Mar 2010	Apr-Jun 2010	Jul-Sep 2010	Oct-Dec 2010	Jan-Mar 2011	Qrt to Qrt change	Year on year change	Qrt to Qrt change	Year on year change
	Thousand	Thousand	Thousand	Thousand	Thousand	Thousand	Thousand	Percent	Percent
Mpumalanga									
Population 15-64 yrs	2 277	2 287	2 297	2 307	2 316	9	39	0,4	1,7
Labour Force	1 241	1 243	1 243	1 228	1 267	39	26	3,2	2,1
Employed	882	899	890	876	877	1	-5	0,1	-0,6
Unemployed	359	344	353	352	390	38	31	10,8	8,6
Not economically active	1 036	1 044	1 055	1 079	1 049	-30	13	-2,8	1,3
Discouraged work-seekers	165	182	193	207	208	1	43	0,5	26,1
Other	871	862	862	872	841	-31	-30	-3,6	-3,4
Rates (%)									
Unemployment rate	28,9	27,7	28,4	28,7	30,8	2,1	1,9		
Employed / population ratio (Absorption)	38,7	39,3	38,7	38,0	37,9	-0,1	-0,8		
Labour force participation rate	54,5	54,4	54,1	53,2	54,7	1,5	0,2		
Limpopo									
Population 15-64 yrs	3 261	3 279	3 296	3 313	3 329	16	68	0,5	2,1
Labour Force	1 228	1 221	1 208	1 157	1 166	9	-62	0,8	-5,0
Employed	898	947	905	962	940	-22	42	-2,3	4,7
Unemployed	330	274	303	196	225	29	-105	14,8	-31,8
Not economically active	2 033	2 058	2 088	2 155	2 163	8	130	0,4	6,4
Discouraged work-seekers	266	287	321	393	415	22	149	5,6	56,0
Other	1 767	1 771	1 767	1 762	1 749	-13	-18	-0,7	-1,0
Rates (%)									
Unemployment rate	26,9	22,4	25,1	16,9	19,3	2,4	-7,6		
Employed / population ratio (Absorption)	27,5	28,9	27,5	29,0	28,2	-0,8	0,7		
Labour force participation rate	37,7	37,2	36,7	35,0	35,0	0,0	-2,7		

Due to rounding, numbers do not necessarily add up to totals.

Note: Employment refers to market production activities.

Table 2.3: Labour force characteristics by province - Expanded definition of unemployment									
	Jan-Mar 2010	Apr-Jun 2010	Jul-Sep 2010	Oct-Dec 2010	Jan-Mar 2011	Qrt to Qrt change	Year on year change	Qrt to Qrt change	Year on year change
	Thousand	Thousand	Thousand	Thousand	Thousand	Thousand	Thousand	Percent	Percent
South Africa									
Population 15-64 yrs	31 818	31 946	32 072	32 193	32 314	121	496	0,4	1,6
Labour Force	20 228	20 333	20 396	20 439	20 650	211	422	1,0	2,1
Employed	13 076	13 061	12 975	13 132	13 118	-14	42	-0,1	0,3
Unemployed	7 151	7 273	7 421	7 307	7 532	225	381	3,1	5,3
Not economically active	11 590	11 614	11 677	11 754	11 664	-90	74	-0,8	0,6
Rates (%)									
Unemployment rate	35,4	35,8	36,4	35,8	36,5	0,7	1,1		
Employed / population ratio (Absorption)	41,1	40,9	40,5	40,8	40,6	-0,2	-0,5		
Labour force participation rate	63,6	63,6	63,6	63,5	63,9	0,4	0,3		
Western Cape									
Population 15-64 yrs	3 363	3 376	3 390	3 403	3 417	14	54	0,4	1,6
Labour Force	2 391	2 380	2 354	2 331	2 341	10	-50	0,4	-2,1
Employed	1 837	1 793	1 754	1 772	1 784	12	-53	0,7	-2,9
Unemployed	554	587	600	559	556	-3	2	-0,5	0,4
Not economically active	971	996	1 036	1 072	1 076	4	105	0,4	10,8
Rates (%)									
Unemployment rate	23,2	24,7	25,5	24,0	23,8	-0,2	0,6		
Employed / population ratio (Absorption)	54,6	53,1	51,7	52,1	52,2	0,1	-2,4		
Labour force participation rate	71,1	70,5	69,4	68,5	68,5	0,0	-2,6		
Eastern Cape									
Population 15-64 yrs	4 102	4 117	4 131	4 143	4 155	12	53	0,3	1,3
Labour Force	2 222	2 218	2 191	2 214	2 244	30	22	1,4	1,0
Employed	1 267	1 274	1 306	1 328	1 325	-3	58	-0,2	4,6
Unemployed	955	945	884	886	919	33	-36	3,7	-3,8
Not economically active	1 880	1 899	1 940	1 929	1 911	-18	31	-0,9	1,6
Rates (%)									
Unemployment rate	43,0	42,6	40,4	40,0	41,0	1,0	-2,0		
Employed / population ratio (Absorption)	30,9	30,9	31,6	32,1	31,9	-0,2	1,0		
Labour force participation rate	54,2	53,9	53,0	53,4	54,0	0,6	-0,2		

Due to rounding, numbers do not necessarily add up to totals.

Note: Employment refers to market production activities.

Table 2.3: Labour force characteristics by province - Expanded definition of unemployment (continued)									
	Jan-Mar 2010	Apr-Jun 2010	Jul-Sep 2010	Oct-Dec 2010	Jan-Mar 2011	Qrt to Qrt change	Year on year change	Qrt to Qrt change	Year on year change
	Thousand	Thousand	Thousand	Thousand	Thousand	Thousand	Thousand	Percent	Percent
Northern Cape									
Population 15-64 yrs	709	711	713	715	717	2	8	0,3	1,1
Labour Force	436	428	432	424	441	17	5	4,0	1,1
Employed	270	260	276	278	261	-17	-9	-6,1	-3,3
Unemployed	165	167	155	146	179	33	14	22,6	8,5
Not economically active	273	283	281	291	276	-15	3	-5,2	1,1
Rates (%)									
Unemployment rate	37,9	39,1	36,0	34,4	40,7	6,3	2,8		
Employed / population ratio (Absorption)	38,1	36,6	38,7	38,9	36,4	-2,5	-1,7		
Labour force participation rate	61,4	60,1	60,4	59,3	61,4	2,1	0,0		
Free State									
Population 15-64 yrs	1 853	1 856	1 860	1 863	1 867	4	14	0,2	0,8
Labour Force	1 211	1 219	1 229	1 208	1 222	14	11	1,2	0,9
Employed	770	778	768	785	780	-5	10	-0,6	1,3
Unemployed	441	441	461	423	443	20	2	4,7	0,5
Not economically active	642	637	631	655	645	-10	3	-1,5	0,5
Rates (%)									
Unemployment rate	36,4	36,2	37,5	35,0	36,2	1,2	-0,2		
Employed / population ratio (Absorption)	41,6	41,9	41,3	42,1	41,8	-0,3	0,2		
Labour force participation rate	65,4	65,7	66,1	64,8	65,5	0,7	0,1		
KwaZulu Natal									
Population 15-64 yrs	6 604	6 635	6 664	6 692	6 720	28	116	0,4	1,8
Labour Force	3 900	3 957	3 916	3 950	3 982	32	82	0,8	2,1
Employed	2 488	2 436	2 401	2 439	2 429	-10	-59	-0,4	-2,4
Unemployed	1 412	1 521	1 514	1 511	1 552	41	140	2,7	9,9
Not economically active	2 705	2 677	2 748	2 742	2 738	-4	33	-0,1	1,2
Rates (%)									
Unemployment rate	36,2	38,4	38,7	38,3	39,0	0,7	2,8		
Employed / population ratio (Absorption)	37,7	36,7	36,0	36,4	36,1	-0,3	-1,6		
Labour force participation rate	59,1	59,6	58,7	59,0	59,2	0,2	0,1		

Due to rounding, numbers do not necessarily add up to totals.

Note: Employment refers to market production activities.

Table 2.3: Labour force characteristics by province - Expanded definition of unemployment (continued)									
	Jan-Mar 2010	Apr-Jun 2010	Jul-Sep 2010	Oct-Dec 2010	Jan-Mar 2011	Qrt to Qrt change	Year on year change	Qrt to Qrt change	Year on year change
	Thousand	Thousand	Thousand	Thousand	Thousand	Thousand	Thousand	Percent	Percent
North West									
Population 15-64 yrs	2 007	2 013	2 019	2 025	2 031	6	24	0,3	1,2
Labour Force	1 194	1 231	1 243	1 267	1 254	-13	60	-1,0	5,0
Employed	719	722	714	740	722	-18	3	-2,4	0,4
Unemployed	474	508	529	527	532	5	58	0,9	12,2
Not economically active	813	783	776	758	777	19	-36	2,5	-4,4
Rates (%)									
Unemployment rate	39,7	41,3	42,6	41,6	42,4	0,8	2,7		
Employed / population ratio (Absorption)	35,8	35,9	35,4	36,5	35,5	-1,0	-0,3		
Labour force participation rate	59,4	61,1	61,6	62,6	61,7	-0,9	2,3		
Gauteng									
Population 15-64 yrs	7 642	7 672	7 702	7 732	7 763	31	121	0,4	1,6
Labour Force	5 717	5 728	5 808	5 797	5 866	69	149	1,2	2,6
Employed	3 944	3 950	3 958	3 953	3 999	46	55	1,2	1,4
Unemployed	1 773	1 778	1 850	1 844	1 867	23	94	1,2	5,3
Not economically active	1 925	1 944	1 894	1 936	1 897	-39	-28	-2,0	-1,5
Rates (%)									
Unemployment rate	31,0	31,0	31,9	31,8	31,8	0,0	0,8		
Employed / population ratio (Absorption)	51,6	51,5	51,4	51,1	51,5	0,4	-0,1		
Labour force participation rate	74,8	74,7	75,4	75,0	75,6	0,6	0,8		
Mpumalanga									
Population 15-64 yrs	2 277	2 287	2 297	2 307	2 316	9	39	0,4	1,7
Labour Force	1 538	1 543	1 567	1 574	1 600	26	62	1,7	4,0
Employed	882	899	890	876	877	1	-5	0,1	-0,6
Unemployed	656	644	677	698	722	24	66	3,4	10,1
Not economically active	739	744	730	733	717	-16	-22	-2,2	-3,0
Rates (%)									
Unemployment rate	42,7	41,7	43,2	44,3	45,2	0,9	2,5		
Employed / population ratio (Absorption)	38,7	39,3	38,7	38,0	37,9	-0,1	-0,8		
Labour force participation rate	67,5	67,5	68,2	68,2	69,0	0,8	1,5		

Due to rounding, numbers do not necessarily add up to totals.

Note: Employment refers to market production activities.

Table 2.3: Labour force characteristics by province - Expanded definition of unemployment (concluded)									
	Jan-Mar 2010	Apr-Jun 2010	Jul-Sep 2010	Oct-Dec 2010	Jan-Mar 2011	Qrt to Qrt change	Year on year change	Qrt to Qrt change	Year on year change
	Thousand	Thousand	Thousand	Thousand	Thousand	Thousand	Thousand	Percent	Percent
Limpopo									
Population 15-64 yrs	3 261	3 279	3 296	3 313	3 329	16	68	0,5	2,1
Labour Force	1 620	1 629	1 656	1 674	1 702	28	82	1,7	5,1
Employed	898	947	905	962	940	-22	42	-2,3	4,7
Unemployed	722	682	751	713	761	48	39	6,7	5,4
Not economically active	1 641	1 650	1 641	1 638	1 627	-11	-14	-0,7	-0,9
Rates (%)									
Unemployment rate	44,6	41,9	45,4	42,6	44,7	2,1	0,1		
Employed / population ratio (Absorption)	27,5	28,9	27,5	29,0	28,2	-0,8	0,7		
Labour force participation rate	49,7	49,7	50,2	50,6	51,1	0,5	1,4		

Due to rounding, numbers do not necessarily add up to totals.

Note: Employment refers to market production activities.

Table 3.1: Employed by industry and sex - South Africa									
	Jan-Mar 2010	Apr-Jun 2010	Jul-Sep 2010	Oct-Dec 2010	Jan-Mar 2011	Qrt to Qrt change	Year on year change	Qrt to Qrt change	Year on year change
	Thousand	Thousand	Thousand	Thousand	Thousand	Thousand	Thousand	Percent	Percent
Both sexes	13 076	13 061	12 975	13 132	13 118	-14	42	-0,1	0,3
Agriculture	658	630	640	627	603	-24	-55	-3,8	-8,4
Mining	303	315	303	298	313	15	10	5,0	3,3
Manufacturing	1 755	1 705	1 713	1 783	1 803	20	48	1,1	2,7
Utilities	72	96	99	94	97	3	25	3,2	34,7
Construction	1 060	1 049	1 076	1 056	1 031	-25	-29	-2,4	-2,7
Trade	2 882	2 903	2 947	2 975	2 962	-13	80	-0,4	2,8
Transport	797	766	773	761	727	-34	-70	-4,5	-8,8
Finance	1 681	1 723	1 625	1 594	1 631	37	-50	2,3	-3,0
Community and social services	2 695	2 710	2 678	2 826	2 828	2	133	0,1	4,9
Private households	1 167	1 157	1 119	1 117	1 118	1	-49	0,1	-4,2
Other	6	6	1	1	5	4	-1	400,0	-16,7
Women	5 710	5 675	5 601	5 698	5 688	-10	-22	-0,2	-0,4
Agriculture	243	215	202	209	208	-1	-35	-0,5	-14,4
Mining	34	35	33	41	37	-4	3	-9,8	8,8
Manufacturing	566	569	574	613	629	16	63	2,6	11,1
Utilities	12	19	25	28	31	3	19	10,7	158,3
Construction	125	114	116	110	108	-2	-17	-1,8	-13,6
Trade	1 402	1 421	1 398	1 405	1 397	-8	-5	-0,6	-0,4
Transport	176	143	155	152	130	-22	-46	-14,5	-26,1
Finance	697	692	670	645	662	17	-35	2,6	-5,0
Community and social services	1 569	1 565	1 549	1 638	1 621	-17	52	-1,0	3,3
Private households	884	897	879	856	863	7	-21	0,8	-2,4
Other	3	6	1	1	3	2	0	200,0	0,0
Men	7 367	7 385	7 373	7 434	7 430	-4	63	-0,1	0,9
Agriculture	415	415	438	418	395	-23	-20	-5,5	-4,8
Mining	269	280	270	257	276	19	7	7,4	2,6
Manufacturing	1 190	1 135	1 139	1 171	1 174	3	-16	0,3	-1,3
Utilities	60	77	74	67	66	-1	6	-1,5	10,0
Construction	935	935	960	946	923	-23	-12	-2,4	-1,3
Trade	1 480	1 482	1 549	1 570	1 565	-5	85	-0,3	5,7
Transport	621	623	618	609	597	-12	-24	-2,0	-3,9
Finance	984	1 031	955	949	969	20	-15	2,1	-1,5
Community and social services	1 126	1 145	1 129	1 188	1 207	19	81	1,6	7,2
Private households	284	259	241	261	255	-6	-29	-2,3	-10,2
Other	3	1			2		-1	.	-33,3

Table 3.2: Employed by industry and province									
	Jan-Mar 2010	Apr-Jun 2010	Jul-Sep 2010	Oct-Dec 2010	Jan-Mar 2011	Qrt to Qrt change	Year on year change	Qrt to Qrt change	Year on year change
	Thousand	Thousand	Thousand	Thousand	Thousand	Thousand	Thousand	Percent	Percent
Agriculture	658	630	640	627	603	-24	-55	-3,8	-8,4
Western Cape	172	149	136	122	121	-1	-51	-0,8	-29,7
Eastern Cape	62	54	76	66	64	-2	2	-3,0	3,2
Northern Cape	46	32	40	54	53	-1	7	-1,9	15,2
Free State	75	75	67	64	62	-2	-13	-3,1	-17,3
KwaZulu Natal	120	114	119	121	108	-13	-12	-10,7	-10,0
North West	38	40	35	31	37	6	-1	19,4	-2,6
Gauteng	32	31	34	27	34	7	2	25,9	6,3
Mpumalanga	67	78	74	74	71	-3	4	-4,1	6,0
Limpopo	46	55	58	67	52	-15	6	-22,4	13,0
Mining	303	315	303	298	313	15	10	5,0	3,3
Western Cape	1	1	3	3	2	-1	1	-33,3	100,0
Eastern Cape	1	2	2		2		1	.	100,0
Northern Cape	9	12	12	9	11	2	2	22,2	22,2
Free State	34	31	32	29	21	-8	-13	-27,6	-38,2
KwaZulu Natal	9	8	7	13	14	1	5	7,7	55,6
North West	120	111	106	123	131	8	11	6,5	9,2
Gauteng	20	27	38	23	22	-1	2	-4,3	10,0
Mpumalanga	57	59	58	50	52	2	-5	4,0	-8,8
Limpopo	51	64	46	48	57	9	6	18,8	11,8
Manufacturing	1 755	1 705	1 713	1 783	1 803	20	48	1,1	2,7
Western Cape	275	272	261	283	290	7	15	2,5	5,5
Eastern Cape	140	135	159	163	183	20	43	12,3	30,7
Northern Cape	11	12	11	12	14	2	3	16,7	27,3
Free State	71	71	66	62	63	1	-8	1,6	-11,3
KwaZulu Natal	419	372	371	371	389	18	-30	4,9	-7,2
North West	64	74	69	77	62	-15	-2	-19,5	-3,1
Gauteng	645	633	630	667	663	-4	18	-0,6	2,8
Mpumalanga	70	81	81	80	77	-3	7	-3,8	10,0
Limpopo	60	55	66	69	62	-7	2	-10,1	3,3

For all values of 10 000 or lower the sample size is too small for reliable estimates.
 Due to rounding, numbers do not necessarily add up to totals.

Table 3.2: Employed by industry and province (continued)									
	Jan-Mar 2010	Apr-Jun 2010	Jul-Sep 2010	Oct-Dec 2010	Jan-Mar 2011	Qrt to Qrt change	Year on year change	Qrt to Qrt change	Year on year change
	Thousand	Thousand	Thousand	Thousand	Thousand	Thousand	Thousand	Percent	Percent
Utilities	72	96	99	94	97	3	25	3,2	34,7
Western Cape	7	8	11	10	11	1	4	10,0	57,1
Eastern Cape	2	6	4	2	6	4	4	200,0	200,0
Northern Cape	1	2	1	1	0	-1	-1	-100,0	-100,0
Free State	4	6	3	4	4	0	0	0,0	0,0
KwaZulu Natal	5	8	9	17	19	2	14	11,8	280,0
North West	3	3	2	1	2	1	-1	100,0	-33,3
Gauteng	30	44	42	28	25	-3	-5	-10,7	-16,7
Mpumalanga	13	10	21	23	22	-1	9	-4,3	69,2
Limpopo	7	9	7	8	9	1	2	12,5	28,6
Construction	1 060	1 049	1 076	1 056	1 031	-25	-29	-2,4	-2,7
Western Cape	144	153	141	130	124	-6	-20	-4,6	-13,9
Eastern Cape	110	113	120	129	120	-9	10	-7,0	9,1
Northern Cape	15	18	20	18	14	-4	-1	-22,2	-6,7
Free State	47	50	51	54	56	2	9	3,7	19,1
KwaZulu Natal	243	236	231	225	226	1	-17	0,4	-7,0
North West	52	43	38	43	45	2	-7	4,7	-13,5
Gauteng	280	272	308	274	284	10	4	3,6	1,4
Mpumalanga	65	68	72	74	69	-5	4	-6,8	6,2
Limpopo	105	95	94	109	93	-16	-12	-14,7	-11,4
Trade	2 882	2 903	2 947	2 975	2 962	-13	80	-0,4	2,8
Western Cape	400	387	369	379	388	9	-12	2,4	-3,0
Eastern Cape	305	311	328	313	295	-18	-10	-5,8	-3,3
Northern Cape	46	45	42	39	35	-4	-11	-10,3	-23,9
Free State	161	166	181	169	167	-2	6	-1,2	3,7
KwaZulu Natal	528	513	509	523	536	13	8	2,5	1,5
North West	144	148	164	162	150	-12	6	-7,4	4,2
Gauteng	834	866	907	922	930	8	96	0,9	11,5
Mpumalanga	212	213	214	219	218	-1	6	-0,5	2,8
Limpopo	250	256	233	250	243	-7	-7	-2,8	-2,8

For all values of 10 000 or lower the sample size is too small for reliable estimates.
 Due to rounding, numbers do not necessarily add up to totals.

Table 3.2: Employed by industry and province (continued)									
	Jan-Mar 2010	Apr-Jun 2010	Jul-Sep 2010	Oct-Dec 2010	Jan-Mar 2011	Qrt to Qrt change	Year on year change	Qrt to Qrt change	Year on year change
	Thousand	Thousand	Thousand	Thousand	Thousand	Thousand	Thousand	Percent	Percent
Transport	797	766	773	761	727	-34	-70	-4,5	-8,8
Western Cape	97	98	107	112	113	1	16	0,9	16,5
Eastern Cape	77	71	67	70	57	-13	-20	-18,6	-26,0
Northern Cape	9	6	11	12	14	2	5	16,7	55,6
Free State	46	45	33	37	36	-1	-10	-2,7	-21,7
KwaZulu Natal	159	164	194	185	174	-11	15	-5,9	9,4
North West	25	22	22	21	21	0	-4	0,0	-16,0
Gauteng	307	275	256	250	244	-6	-63	-2,4	-20,5
Mpumalanga	42	43	42	34	34	0	-8	0,0	-19,0
Limpopo	35	43	42	39	33	-6	-2	-15,4	-5,7
Finance	1 681	1 723	1 625	1 594	1 631	37	-50	2,3	-3,0
Western Cape	256	256	252	244	239	-5	-17	-2,0	-6,6
Eastern Cape	116	116	102	110	125	15	9	13,6	7,8
Northern Cape	18	22	26	22	15	-7	-3	-31,8	-16,7
Free State	58	68	73	83	80	-3	22	-3,6	37,9
KwaZulu Natal	275	312	279	266	259	-7	-16	-2,6	-5,8
North West	66	60	62	55	61	6	-5	10,9	-7,6
Gauteng	760	744	677	675	705	30	-55	4,4	-7,2
Mpumalanga	88	83	89	82	82	0	-6	0,0	-6,8
Limpopo	45	63	64	58	64	6	19	10,3	42,2
Community and social services	2 695	2 710	2 678	2 826	2 828	2	133	0,1	4,9
Western Cape	363	360	364	377	390	13	27	3,4	7,4
Eastern Cape	332	336	330	356	333	-23	1	-6,5	0,3
Northern Cape	84	84	85	79	79	0	-5	0,0	-6,0
Free State	188	178	173	191	199	8	11	4,2	5,9
KwaZulu Natal	501	482	470	510	514	4	13	0,8	2,6
North West	142	154	146	168	152	-16	10	-9,5	7,0
Gauteng	698	733	744	770	760	-10	62	-1,3	8,9
Mpumalanga	183	178	168	160	172	12	-11	7,5	-6,0
Limpopo	205	204	198	215	227	12	22	5,6	10,7

For all values of 10 000 or lower the sample size is too small for reliable estimates.
 Due to rounding, numbers do not necessarily add up to totals.

Table 3.2: Employed by industry and province (concluded)									
	Jan-Mar 2010	Apr-Jun 2010	Jul-Sep 2010	Oct-Dec 2010	Jan-Mar 2011	Qrt to Qrt change	Year on year change	Qrt to Qrt change	Year on year change
	Thousand	Thousand	Thousand	Thousand	Thousand	Thousand	Thousand	Percent	Percent
Private households	1 167	1 157	1 119	1 117	1 118	1	-49	0,1	-4,2
Western Cape	122	108	110	113	105	-8	-17	-7,1	-13,9
Eastern Cape	122	131	118	120	139	19	17	15,8	13,9
Northern Cape	30	27	29	32	25	-7	-5	-21,9	-16,7
Free State	86	90	89	91	90	-1	4	-1,1	4,7
KwaZulu Natal	228	226	213	208	188	-20	-40	-9,6	-17,5
North West	65	67	71	59	61	2	-4	3,4	-6,2
Gauteng	332	320	322	317	328	11	-4	3,5	-1,2
Mpumalanga	87	86	71	80	81	1	-6	1,3	-6,9
Limpopo	96	102	96	98	101	3	5	3,1	5,2

For all values of 10 000 or lower the sample size is too small for reliable estimates.
 Due to rounding, numbers do not necessarily add up to totals.

Table 3.3: Employed by sector and industry - South Africa									
	Jan-Mar 2010	Apr-Jun 2010	Jul-Sep 2010	Oct-Dec 2010	Jan-Mar 2011	Qrt to Qrt change	Year on year change	Qrt to Qrt change	Year on year change
	Thousand	Thousand	Thousand	Thousand	Thousand	Thousand	Thousand	Percent	Percent
Total employed	13 076	13 061	12 975	13 132	13 118	-14	42	-0,1	0,3
Formal and informal sector (Non-agricultural)	11 251	11 274	11 215	11 388	11 397	9	146	0,1	1,3
Mining	303	315	303	298	313	15	10	5,0	3,3
Manufacturing	1 755	1 705	1 713	1 783	1 803	20	48	1,1	2,7
Utilities	72	96	99	94	97	3	25	3,2	34,7
Construction	1 060	1 049	1 076	1 056	1 031	-25	-29	-2,4	-2,7
Trade	2 882	2 903	2 947	2 975	2 962	-13	80	-0,4	2,8
Transport	797	766	773	761	727	-34	-70	-4,5	-8,8
Finance	1 681	1 723	1 625	1 594	1 631	37	-50	2,3	-3,0
Community and social services	2 695	2 710	2 678	2 826	2 828	2	133	0,1	4,9
Other	6	6	1	1	5	4	-1	400,0	-16,7
Formal sector (Non-agricultural)	9 197	9 088	9 043	9 163	9 219	56	22	0,6	0,2
Mining	301	314	298	297	306	9	5	3,0	1,7
Manufacturing	1 559	1 486	1 508	1 556	1 584	28	25	1,8	1,6
Utilities	70	96	98	91	96	5	26	5,5	37,1
Construction	792	736	766	737	739	2	-53	0,3	-6,7
Trade	1 920	1 890	1 924	1 927	1 935	8	15	0,4	0,8
Transport	594	558	561	573	536	-37	-58	-6,5	-9,8
Finance	1 532	1 574	1 485	1 452	1 505	53	-27	3,7	-1,8
Community and social services	2 423	2 428	2 402	2 529	2 513	-16	90	-0,6	3,7
Other	6	6	1	1	5	4	-1	400,0	-16,7
Informal sector (Non-agricultural)	2 054	2 186	2 172	2 225	2 179	-46	125	-2,1	6,1
Mining	2	1	5	1	7	6	5	600,0	250,0
Manufacturing	197	218	205	227	219	-8	22	-3,5	11,2
Utilities	2	1	1	3	1	-2	-1	-66,7	-50,0
Construction	268	313	310	319	293	-26	25	-8,2	9,3
Trade	961	1 013	1 023	1 048	1 027	-21	66	-2,0	6,9
Transport	203	208	212	188	191	3	-12	1,6	-5,9
Finance	150	149	140	142	126	-16	-24	-11,3	-16,0
Community and social services	272	282	276	297	315	18	43	6,1	15,8
Agriculture	658	630	640	627	603	-24	-55	-3,8	-8,4
Private households	1 167	1 157	1 119	1 117	1 118	1	-49	0,1	-4,2

For all values of 10 000 or lower the sample size is too small for reliable estimates.
 Due to rounding, numbers do not necessarily add up to totals.

Table 3.4: Employed by province and sector									
	Jan-Mar 2010	Apr-Jun 2010	Jul-Sep 2010	Oct-Dec 2010	Jan-Mar 2011	Qrt to Qrt change	Year on year change	Qrt to Qrt change	Year on year change
	Thousand	Thousand	Thousand	Thousand	Thousand	Thousand	Thousand	Percent	Percent
South Africa	13 076	13 061	12 975	13 132	13 118	-14	42	-0,1	0,3
Formal sector (Non-agricultural)	9 197	9 088	9 043	9 163	9 219	56	22	0,6	0,2
Informal sector (Non-agricultural)	2 054	2 186	2 172	2 225	2 179	-46	125	-2,1	6,1
Agriculture	658	630	640	627	603	-24	-55	-3,8	-8,4
Private households	1 167	1 157	1 119	1 117	1 118	1	-49	0,1	-4,2
Western Cape	1 837	1 793	1 754	1 772	1 784	12	-53	0,7	-2,9
Formal sector (Non-agricultural)	1 351	1 326	1 318	1 361	1 366	5	15	0,4	1,1
Informal sector (Non-agricultural)	192	210	190	177	192	15	0	8,5	0,0
Agriculture	172	149	136	122	121	-1	-51	-0,8	-29,7
Private households	122	108	110	113	105	-8	-17	-7,1	-13,9
Eastern Cape	1 267	1 274	1 306	1 328	1 325	-3	58	-0,2	4,6
Formal sector (Non-agricultural)	823	794	817	844	864	20	41	2,4	5,0
Informal sector (Non-agricultural)	260	295	295	298	258	-40	-2	-13,4	-0,8
Agriculture	62	54	76	66	64	-2	2	-3,0	3,2
Private households	122	131	118	120	139	19	17	15,8	13,9
Northern Cape	270	260	276	278	261	-17	-9	-6,1	-3,3
Formal sector (Non-agricultural)	169	177	173	161	152	-9	-17	-5,6	-10,1
Informal sector (Non-agricultural)	26	25	35	31	31	0	5	0,0	19,2
Agriculture	46	32	40	54	53	-1	7	-1,9	15,2
Private households	30	27	29	32	25	-7	-5	-21,9	-16,7
Free State	770	778	768	785	780	-5	10	-0,6	1,3
Formal sector (Non-agricultural)	492	489	490	502	495	-7	3	-1,4	0,6
Informal sector (Non-agricultural)	117	125	122	128	132	4	15	3,1	12,8
Agriculture	75	75	67	64	62	-2	-13	-3,1	-17,3
Private households	86	90	89	91	90	-1	4	-1,1	4,7
KwaZulu Natal	2 488	2 436	2 401	2 439	2 429	-10	-59	-0,4	-2,4
Formal sector (Non-agricultural)	1 722	1 675	1 651	1 667	1 672	5	-50	0,3	-2,9
Informal sector (Non-agricultural)	417	421	419	443	462	19	45	4,3	10,8
Agriculture	120	114	119	121	108	-13	-12	-10,7	-10,0
Private households	228	226	213	208	188	-20	-40	-9,6	-17,5

For all values of 10 000 or lower the sample size is too small for reliable estimates.
Due to rounding, numbers do not necessarily add up to totals.

Table 3.4: Employed by province and sector (concluded)									
	Jan-Mar 2010	Apr-Jun 2010	Jul-Sep 2010	Oct-Dec 2010	Jan-Mar 2011	Qrt to Qrt change	Year on year change	Qrt to Qrt change	Year on year change
	Thousand	Thousand	Thousand	Thousand	Thousand	Thousand	Thousand	Percent	Percent
North West	719	722	714	740	722	-18	3	-2,4	0,4
Formal sector (Non-agricultural)	527	515	507	559	534	-25	7	-4,5	1,3
Informal sector (Non-agricultural)	89	100	101	90	89	-1	0	-1,1	0,0
Agriculture	38	40	35	31	37	6	-1	19,4	-2,6
Private households	65	67	71	59	61	2	-4	3,4	-6,2
Gauteng	3 944	3 950	3 958	3 953	3 999	46	55	1,2	1,4
Formal sector (Non-agricultural)	3 088	3 057	3 065	3 061	3 099	38	11	1,2	0,4
Informal sector (Non-agricultural)	492	542	537	547	538	-9	46	-1,6	9,3
Agriculture	32	31	34	27	34	7	2	25,9	6,3
Private households	332	320	322	317	328	11	-4	3,5	-1,2
Mpumalanga	882	899	890	876	877	1	-5	0,1	-0,6
Formal sector (Non-agricultural)	541	546	557	536	535	-1	-6	-0,2	-1,1
Informal sector (Non-agricultural)	188	189	187	186	191	5	3	2,7	1,6
Agriculture	67	78	74	74	71	-3	4	-4,1	6,0
Private households	87	86	71	80	81	1	-6	1,3	-6,9
Limpopo	898	947	905	962	940	-22	42	-2,3	4,7
Formal sector (Non-agricultural)	483	510	465	471	502	31	19	6,6	3,9
Informal sector (Non-agricultural)	274	279	286	325	286	-39	12	-12,0	4,4
Agriculture	46	55	58	67	52	-15	6	-22,4	13,0
Private households	96	102	96	98	101	3	5	3,1	5,2

For all values of 10 000 or lower the sample size is too small for reliable estimates.
Due to rounding, numbers do not necessarily add up to totals.

Table 3.5: Employed by sex and occupation - South Africa									
	Jan-Mar 2010	Apr-Jun 2010	Jul-Sep 2010	Oct-Dec 2010	Jan-Mar 2011	Qrt to Qrt change	Year on year change	Qrt to Qrt change	Year on year change
	Thousand	Thousand	Thousand	Thousand	Thousand	Thousand	Thousand	Percent	Percent
Both sexes	13 076	13 061	12 975	13 132	13 118	-14	42	-0,1	0,3
Manager	1 000	1 009	1 069	1 124	1 136	12	136	1,1	13,6
Professional	695	756	705	762	750	-12	55	-1,6	7,9
Technician	1 515	1 433	1 418	1 469	1 461	-8	-54	-0,5	-3,6
Clerk	1 477	1 467	1 411	1 434	1 341	-93	-136	-6,5	-9,2
Sales and services	1 852	1 883	1 858	1 882	1 904	22	52	1,2	2,8
Skilled agriculture	90	115	76	73	75	2	-15	2,7	-16,7
Craft and related trade	1 627	1 590	1 607	1 566	1 621	55	-6	3,5	-0,4
Plant and machine operator	1 091	1 087	1 162	1 125	1 134	9	43	0,8	3,9
Elementary	2 856	2 828	2 782	2 829	2 821	-8	-35	-0,3	-1,2
Domestic worker	873	892	887	869	877	8	4	0,9	0,5
Women	5 710	5 675	5 601	5 698	5 688	-10	-22	-0,2	-0,4
Manager	286	278	328	357	361	4	75	1,1	26,2
Professional	321	336	327	343	328	-15	7	-4,4	2,2
Technician	820	805	773	811	811	0	-9	0,0	-1,1
Clerk	1 027	1 003	969	985	931	-54	-96	-5,5	-9,3
Sales and services	856	843	826	838	826	-12	-30	-1,4	-3,5
Skilled agriculture	19	36	22	21	22	1	3	4,8	15,8
Craft and related trade	202	175	177	188	203	15	1	8,0	0,5
Plant and machine operator	144	148	171	163	178	15	34	9,2	23,6
Elementary	1 190	1 196	1 150	1 166	1 188	22	-2	1,9	-0,2
Domestic worker	844	855	858	826	842	16	-2	1,9	-0,2
Men	7 367	7 385	7 373	7 434	7 430	-4	63	-0,1	0,9
Manager	714	731	741	767	775	8	61	1,0	8,5
Professional	374	420	378	419	421	2	47	0,5	12,6
Technician	694	628	645	658	650	-8	-44	-1,2	-6,3
Clerk	450	464	441	449	409	-40	-41	-8,9	-9,1
Sales and services	996	1 040	1 032	1 043	1 078	35	82	3,4	8,2
Skilled agriculture	71	78	54	52	53	1	-18	1,9	-25,4
Craft and related trade	1 425	1 415	1 430	1 378	1 418	40	-7	2,9	-0,5
Plant and machine operator	948	939	991	962	956	-6	8	-0,6	0,8
Elementary	1 666	1 632	1 632	1 663	1 633	-30	-33	-1,8	-2,0
Domestic worker	29	38	29	43	35	-8	6	-18,6	20,7

For all values of 10 000 or lower the sample size is too small for reliable estimates.
 Due to rounding, numbers do not necessarily add up to totals.

Table 3.6: Employed by sex and status in employment - South Africa									
	Jan-Mar 2010	Apr-Jun 2010	Jul-Sep 2010	Oct-Dec 2010	Jan-Mar 2011	Qrt to Qrt change	Year on year change	Qrt to Qrt change	Year on year change
	Thousand	Thousand	Thousand	Thousand	Thousand	Thousand	Thousand	Percent	Percent
Both sexes	13 076	13 061	12 975	13 132	13 118	-14	42	-0,1	0,3
Employee	11 096	11 032	10 935	11 039	11 061	22	-35	0,2	-0,3
Employer	685	688	711	754	726	-28	41	-3,7	6,0
Own-account worker	1 187	1 221	1 218	1 240	1 230	-10	43	-0,8	3,6
Unpaid household member	108	120	110	99	102	3	-6	3,0	-5,6
Women	5 710	5 675	5 601	5 698	5 688	-10	-22	-0,2	-0,4
Employee	4 903	4 865	4 783	4 857	4 870	13	-33	0,3	-0,7
Employer	155	136	167	171	173	2	18	1,2	11,6
Own-account worker	570	599	587	613	581	-32	11	-5,2	1,9
Unpaid household member	81	75	65	56	65	9	-16	16,1	-19,8
Men	7 367	7 385	7 373	7 434	7 430	-4	63	-0,1	0,9
Employee	6 193	6 167	6 153	6 182	6 191	9	-2	0,1	0,0
Employer	530	552	544	583	553	-30	23	-5,1	4,3
Own-account worker	617	622	631	627	649	22	32	3,5	5,2
Unpaid household member	27	45	45	43	37	-6	10	-14,0	37,0

For all values of 10 000 or lower the sample size is too small for reliable estimates.
 Due to rounding, numbers do not necessarily add up to totals.

Table 3.7: Employed by sex and usual hours of work - South Africa									
	Jan-Mar 2010	Apr-Jun 2010	Jul-Sep 2010	Oct-Dec 2010	Jan-Mar 2011	Qrt to Qrt change	Year on year change	Qrt to Qrt change	Year on year change
	Thousand	Thousand	Thousand	Thousand	Thousand	Thousand	Thousand	Percent	Percent
Both sexes	13 076	13 061	12 975	13 132	13 118	-14	42	-0,1	0,3
Working less than 15 hours per week	244	239	230	246	220	-26	-24	-10,6	-9,8
Working 15-29 hours per week	773	820	745	783	768	-15	-5	-1,9	-0,6
Working 30-39 hours per week	969	930	964	974	920	-54	-49	-5,5	-5,1
Working 40-45 hours per week	7 077	7 180	7 131	7 082	7 168	86	91	1,2	1,3
Working more than 45 hours per week	4 013	3 891	3 904	4 047	4 044	-3	31	-0,1	0,8
Women	5 710	5 675	5 601	5 698	5 688	-10	-22	-0,2	-0,4
Working less than 15 hours per week	144	147	139	143	134	-9	-10	-6,3	-6,9
Working 15-29 hours per week	518	549	495	498	498	0	-20	0,0	-3,9
Working 30-39 hours per week	607	586	609	596	565	-31	-42	-5,2	-6,9
Working 40-45 hours per week	3 005	3 036	3 051	3 076	3 123	47	118	1,5	3,9
Working more than 45 hours per week	1 435	1 357	1 308	1 384	1 369	-15	-66	-1,1	-4,6
Men	7 367	7 385	7 373	7 434	7 430	-4	63	-0,1	0,9
Working less than 15 hours per week	100	92	92	103	86	-17	-14	-16,5	-14,0
Working 15-29 hours per week	255	271	250	285	269	-16	14	-5,6	5,5
Working 30-39 hours per week	363	344	355	377	355	-22	-8	-5,8	-2,2
Working 40-45 hours per week	4 072	4 144	4 080	4 006	4 045	39	-27	1,0	-0,7
Working more than 45 hours per week	2 577	2 534	2 596	2 663	2 675	12	98	0,5	3,8

For all values of 10 000 or lower the sample size is too small for reliable estimates.
 Due to rounding, numbers do not necessarily add up to totals.

Table 3.8: Time-related underemployment - South Africa									
	Jan-Mar 2010	Apr-Jun 2010	Jul-Sep 2010	Oct-Dec 2010	Jan-Mar 2011	Qrt to Qrt change	Year on year change	Qrt to Qrt change	Year on year change
	Thousand	Thousand	Thousand	Thousand	Thousand	Thousand	Thousand	Percent	Percent
Both sexes	596	558	527	496	525	29	-71	5,8	-11,9
Women	370	346	327	296	327	31	-43	10,5	-11,6
Men	226	212	200	200	198	-2	-28	-1,0	-12,4
As percentage of the labour force (Both sexes)	3,4	3,2	3,0	2,9	3,0	0,1	-0,4		
Women	4,7	4,4	4,2	3,8	4,1	0,3	-0,6		
Men	2,4	2,2	2,1	2,1	2,1	0,0	-0,3		
As percentage of total employment (Both sexes)	4,6	4,3	4,1	3,8	4,0	0,2	-0,6		
Women	6,5	6,1	5,8	5,2	5,7	0,5	-0,8		
Men	3,1	2,9	2,7	2,7	2,7	0,0	-0,4		
Industry	596	558	527	496	525	29	-71	5,8	-11,9
Agriculture	6	14	11	11	13	2	7	18,2	116,7
Mining	0	0		0				.	.
Manufacturing	35	33	24	26	27	1	-8	3,8	-22,9
Utilities		0		0				.	.
Construction	53	60	57	53	45	-8	-8	-15,1	-15,1
Trade	115	103	116	106	101	-5	-14	-4,7	-12,2
Transport	23	15	14	10	13	3	-10	30,0	-43,5
Finance	32	28	23	30	33	3	1	10,0	3,1
Community and social services	90	85	80	78	68	-10	-22	-12,8	-24,4
Private households	241	221	203	181	225	44	-16	24,3	-6,6
Occupation	596	558	527	496	525	29	-71	5,8	-11,9
Manager	8	5	7	11	14	3	6	27,3	75,0
Professional	11	11	8	5	5	0	-6	0,0	-54,5
Technician	34	30	28	27	28	1	-6	3,7	-17,6
Clerk	30	32	11	18	20	2	-10	11,1	-33,3
Sales and services	67	57	62	65	51	-14	-16	-21,5	-23,9
Skilled agriculture	4	6	0	0	4	4	0	.	0,0
Craft and related trade	57	66	65	56	46	-10	-11	-17,9	-19,3
Plant and machine operator	11	11	9	6	12	6	1	100,0	9,1
Elementary	214	180	177	171	177	6	-37	3,5	-17,3
Domestic worker	160	161	159	136	167	31	7	22,8	4,4

Table 4: Characteristics of the unemployed - South Africa									
	Jan-Mar 2010	Apr-Jun 2010	Jul-Sep 2010	Oct-Dec 2010	Jan-Mar 2011	Qrt to Qrt change	Year on year change	Qrt to Qrt change	Year on year change
	Thousand	Thousand	Thousand	Thousand	Thousand	Thousand	Thousand	Percent	Percent
Unemployed	4 395	4 401	4 396	4 137	4 364	227	-31	5,5	-0,7
Job losers	1 432	1 471	1 376	1 292	1 325	33	-107	2,6	-7,5
Job leavers	289	290	260	253	270	17	-19	6,7	-6,6
New entrants	1 815	1 819	1 944	1 782	1 896	114	81	6,4	4,5
Re-entrants	214	206	184	171	189	18	-25	10,5	-11,7
Other	646	615	632	639	684	45	38	7,0	5,9
Unemployed	4 395	4 401	4 396	4 137	4 364	227	-31	5,5	-0,7
Long-term unemployment (1 year and more)	2 798	2 812	2 891	2 815	2 979	164	181	5,8	6,5
Short-term unemployment (less than 1 year)	1 598	1 589	1 505	1 322	1 385	63	-213	4,8	-13,3
Long-term unemployment (%)									
Proportion of the labour force	16,0	16,1	16,6	16,3	17,0	0,7	1,0		
Proportion of the unemployed	63,7	63,9	65,8	68,0	68,3	0,3	4,6		
Those who have worked in the past 5 years									
Previous occupation	1 935	1 967	1 820	1 715	1 784	69	-151	4,0	-7,8
Manager	46	46	42	32	37	5	-9	15,6	-19,6
Professional	34	27	22	23	34	11	0	47,8	0,0
Technician	109	112	85	90	84	-6	-25	-6,7	-22,9
Clerk	222	222	231	214	213	-1	-9	-0,5	-4,1
Sales and services	285	283	262	262	264	2	-21	0,8	-7,4
Skilled agriculture	7	12	11	5	10	5	3	100,0	42,9
Craft and related trade	410	351	348	298	313	15	-97	5,0	-23,7
Plant and machine operator	171	178	138	133	143	10	-28	7,5	-16,4
Elementary	519	564	524	522	522	0	3	0,0	0,6
Domestic worker	132	171	157	136	164	28	32	20,6	24,2
Other	1								

For all values of 10 000 or lower the sample size is too small for reliable estimates.
 Due to rounding, numbers do not necessarily add up to totals.

Table 4: Characteristics of the unemployed - South Africa (concluded)									
	Jan-Mar 2010	Apr-Jun 2010	Jul-Sep 2010	Oct-Dec 2010	Jan-Mar 2011	Qrt to Qrt change	Year on year change	Qrt to Qrt change	Year on year change
	Thousand	Thousand	Thousand	Thousand	Thousand	Thousand	Thousand	Percent	Percent
Previous industry	1 935	1 967	1 820	1 715	1 784	69	-151	4,0	-7,8
Agriculture	101	103	112	83	98	15	-3	18,1	-3,0
Mining	38	33	25	37	28	-9	-10	-24,3	-26,3
Manufacturing	303	294	269	250	249	-1	-54	-0,4	-17,8
Utilities	8	7	9	8	12	4	4	50,0	50,0
Construction	329	319	309	275	289	14	-40	5,1	-12,2
Trade	488	488	448	438	414	-24	-74	-5,5	-15,2
Transport	92	95	76	65	77	12	-15	18,5	-16,3
Finance	231	215	218	214	215	1	-16	0,5	-6,9
Community and social services	178	198	161	162	194	32	16	19,8	9,0
Private households	166	216	193	184	209	25	43	13,6	25,9
Other	1	1							

For all values of 10 000 or lower the sample size is too small for reliable estimates.
 Due to rounding, numbers do not necessarily add up to totals.

Table 5: Characteristics of the not economically active - South Africa									
	Jan-Mar 2010	Apr-Jun 2010	Jul-Sep 2010	Oct-Dec 2010	Jan-Mar 2011	Qrt to Qrt change	Year on year change	Qrt to Qrt change	Year on year change
	Thousand	Thousand	Thousand	Thousand	Thousand	Thousand	Thousand	Percent	Percent
Not economically active	14 346	14 485	14 702	14 924	14 832	-92	486	-0,6	3,4
Student	5 874	6 009	6 096	6 251	6 083	-168	209	-2,7	3,6
Home-maker	2 784	2 894	2 897	2 929	2 882	-47	98	-1,6	3,5
Illness/disability	1 826	1 805	1 807	1 760	1 708	-52	-118	-3,0	-6,5
Too old/young to work	1 166	1 122	1 156	1 149	1 216	67	50	5,8	4,3
Discouraged work seekers	1 870	1 938	2 033	2 150	2 223	73	353	3,4	18,9
Other	826	717	714	686	719	33	-107	4,8	-13,0
Inactivity rate by age (Both sexes)	45,1	45,3	45,8	46,4	45,9	-0,5	0,8		
15-24 yrs	73,6	73,2	74,1	75,6	74,8	-0,8	1,2		
25-54 yrs	27,2	27,9	28,2	28,4	27,9	-0,5	0,7		
55-64 yrs	59,9	59,3	60,0	59,8	60,7	0,9	0,8		
Inactivity rate by age (Women)	52,0	52,4	52,9	53,2	52,4	-0,8	0,4		
15-24 yrs	76,5	75,9	76,8	77,6	76,2	-1,4	-0,3		
25-54 yrs	36,3	37,3	37,9	38,0	37,1	-0,9	0,8		
55-64 yrs	70,2	69,2	68,7	68,8	69,9	1,1	-0,3		
Inactivity rate by age (Men)	37,7	37,9	38,3	39,1	39,0	-0,1	1,3		
15-24 yrs	70,7	70,5	71,4	73,5	73,4	-0,1	2,7		
25-54 yrs	17,3	17,7	17,7	18,0	17,9	-0,1	0,6		
55-64 yrs	47,7	47,4	49,6	49,0	49,7	0,7	2,0		

Due to rounding, numbers do not necessarily add up to totals.

Table 6: Socio-demographic characteristics - South Africa									
	Jan-Mar 2010	Apr-Jun 2010	Jul-Sep 2010	Oct-Dec 2010	Jan-Mar 2011	Qrt to Qrt change	Year on year change	Qrt to Qrt change	Year on year change
	Thousand	Thousand	Thousand	Thousand	Thousand	Thousand	Thousand	Percent	Percent
Age group of the employed	13 076	13 061	12 975	13 132	13 118	-14	42	-0,1	0,3
15-24 yrs	1 341	1 336	1 295	1 271	1 304	33	-37	2,6	-2,8
25-34 yrs	4 387	4 361	4 365	4 379	4 333	-46	-54	-1,1	-1,2
35-44 yrs	3 722	3 716	3 707	3 806	3 847	41	125	1,1	3,4
45-54 yrs	2 534	2 540	2 501	2 545	2 519	-26	-15	-1,0	-0,6
55-64 yrs	1 092	1 108	1 106	1 130	1 116	-14	24	-1,2	2,2
Age group of the unemployed	4 395	4 401	4 396	4 137	4 364	227	-31	5,5	-0,7
15-24 yrs	1 348	1 405	1 364	1 240	1 289	49	-59	4,0	-4,4
25-34 yrs	1 809	1 764	1 791	1 738	1 868	130	59	7,5	3,3
35-44 yrs	810	778	801	758	780	22	-30	2,9	-3,7
45-54 yrs	341	355	354	324	356	32	15	9,9	4,4
55-64 yrs	88	100	87	76	71	-5	-17	-6,6	-19,3
Age group of the not economically active	14 346	14 485	14 702	14 924	14 832	-92	486	-0,6	3,4
15-24 yrs	7 506	7 487	7 596	7 762	7 698	-64	192	-0,8	2,6
25-34 yrs	2 326	2 419	2 415	2 487	2 437	-50	111	-2,0	4,8
35-44 yrs	1 386	1 472	1 504	1 494	1 477	-17	91	-1,1	6,6
45-54 yrs	1 363	1 350	1 397	1 387	1 386	-1	23	-0,1	1,7
55-64 yrs	1 765	1 757	1 790	1 795	1 834	39	69	2,2	3,9
Highest level of education of the employed	13 076	13 061	12 975	13 132	13 118	-14	42	-0,1	0,3
No schooling	421	396	387	377	337	-40	-84	-10,6	-20,0
Less than primary completed	1 127	1 120	1 101	1 056	1 063	7	-64	0,7	-5,7
Primary completed	617	653	626	626	587	-39	-30	-6,2	-4,9
Secondary not completed	4 265	4 315	4 304	4 333	4 416	83	151	1,9	3,5
Secondary completed	4 019	3 902	3 938	4 035	3 960	-75	-59	-1,9	-1,5
Tertiary	2 452	2 471	2 437	2 530	2 602	72	150	2,8	6,1
Other	174	203	183	174	154	-20	-20	-11,5	-11,5

Due to rounding, numbers do not necessarily add up to totals.

Table 6: Socio-demographic characteristics - South Africa (continued)									
	Jan-Mar 2010	Apr-Jun 2010	Jul-Sep 2010	Oct-Dec 2010	Jan-Mar 2011	Qrt to Qrt change	Year on year change	Qrt to Qrt change	Year on year change
	Thousand	Thousand	Thousand	Thousand	Thousand	Thousand	Thousand	Percent	Percent
Highest level of education of the unemployed	4 395	4 401	4 396	4 137	4 364	227	-31	5,5	-0,7
No schooling	83	67	79	83	68	-15	-15	-18,1	-18,1
Less than primary completed	352	347	370	342	306	-36	-46	-10,5	-13,1
Primary completed	220	192	213	174	200	26	-20	14,9	-9,1
Secondary not completed	2 000	2 001	2 028	1 872	2 023	151	23	8,1	1,2
Secondary completed	1 439	1 496	1 424	1 403	1 504	101	65	7,2	4,5
Tertiary	260	258	248	234	241	7	-19	3,0	-7,3
Other	41	40	35	30	22	-8	-19	-26,7	-46,3
Highest level of education of the not economically active	14 346	14 485	14 702	14 924	14 832	-92	486	-0,6	3,4
No schooling	836	844	837	821	834	13	-2	1,6	-0,2
Less than primary completed	1 876	1 941	2 067	2 115	1 888	-227	12	-10,7	0,6
Primary completed	997	1 156	1 178	1 246	1 074	-172	77	-13,8	7,7
Secondary not completed	7 552	7 586	7 628	7 754	7 773	19	221	0,2	2,9
Secondary completed	2 586	2 442	2 440	2 450	2 710	260	124	10,6	4,8
Tertiary	380	396	424	412	431	19	51	4,6	13,4
Other	119	120	127	126	121	-5	2	-4,0	1,7
Current marital status of the employed	13 076	13 061	12 975	13 132	13 118	-14	42	-0,1	0,3
Married	5 503	5 498	5 461	5 552	5 470	-82	-33	-1,5	-0,6
Living together like husband and wife	1 610	1 510	1 482	1 469	1 516	47	-94	3,2	-5,8
Widow/widower	440	472	442	442	416	-26	-24	-5,9	-5,5
Divorced or separated	430	447	467	468	455	-13	25	-2,8	5,8
Never married	5 093	5 133	5 121	5 201	5 262	61	169	1,2	3,3
Current marital status of the unemployed	4 395	4 401	4 396	4 137	4 364	227	-31	5,5	-0,7
Married	728	711	733	684	717	33	-11	4,8	-1,5
Living together like husband and wife	475	494	416	431	412	-19	-63	-4,4	-13,3
Widow/widower	49	46	59	51	50	-1	1	-2,0	2,0
Divorced or separated	89	77	79	53	72	19	-17	35,8	-19,1
Never married	3 054	3 074	3 109	2 918	3 112	194	58	6,6	1,9

Due to rounding, numbers do not necessarily add up to totals.

Table 6: Socio-demographic characteristics - South Africa (concluded)									
	Jan-Mar 2010	Apr-Jun 2010	Jul-Sep 2010	Oct-Dec 2010	Jan-Mar 2011	Qrt to Qrt change	Year on year change	Qrt to Qrt change	Year on year change
	Thousand	Thousand	Thousand	Thousand	Thousand	Thousand	Thousand	Percent	Percent
Current marital status of the not economically active	14 346	14 485	14 702	14 924	14 832	-92	486	-0,6	3,4
Married	2 915	2 933	2 938	2 957	3 011	54	96	1,8	3,3
Living together like husband and wife	791	783	740	734	718	-16	-73	-2,2	-9,2
Widow/widower	613	634	631	646	673	27	60	4,2	9,8
Divorced or separated	229	246	227	218	229	11	0	5,0	0,0
Never married	9 799	9 889	10 164	10 370	10 201	-169	402	-1,6	4,1

Due to rounding, numbers do not necessarily add up to totals.

Table 7: Involvement in non-market activities and labour market status by province									
	Jan-Mar 2010	Apr-Jun 2010	Jul-Sep 2010	Oct-Dec 2010	Jan-Mar 2011	Qrt to Qrt change	Year on year change	Qrt to Qrt change	Year on year change
	Thousand	Thousand	Thousand	Thousand	Thousand	Thousand	Thousand	Percent	Percent
South Africa									
Subsistence farming	1 468	1 325	1 529	1 909	2 285	376	817	19,7	55,7
Fetching water or collecting wood/dung	2 943	2 858	4 539	4 283	3 998	-285	1055	-6,7	35,8
Produce other goods for household use	87	84	220	166	182	16	95	9,6	109,2
Construction or major repairs to own or household	139	145	402	332	259	-73	120	-22,0	86,3
Hunting or fishing for household use	32	19	78	54	38	-16	6	-29,6	18,8
Involvement in at least one activity	3 738	3 484	4 331	5 331	5 382	51	1644	1,0	44,0
Unemployed	615	526	665	613	602	-11	-13	-1,8	-2,1
Not economically active	3 123	2 958	3 667	3 651	3 677	26	554	0,7	17,7
Eastern Cape									
Subsistence farming	483	505	502	573	711	138	228	24,1	47,2
Fetching water or collecting wood/dung	655	747	1 164	1 030	982	-48	327	-4,7	49,9
Produce other goods for household use	5	4	5	12	4	-8	-1	-66,7	-20,0
Construction or major repairs to own or household'	13	42	84	58	85	27	72	46,6	553,8
Hunting or fishing for household use	3	.	3	3	4	1	1	33,3	33,3
Involvement in at least one activity	948	981	1 135	1 289	1 357	68	409	5,3	43,1
Unemployed	137	110	128	118	137	19	0	16,1	0,0
Not economically active	811	871	1 007	963	1 033	70	222	7,3	27,4
Northern Cape									
Subsistence farming	3	2	10	9	6	-3	3	-33,3	100,0
Fetching water or collecting wood/dung	82	77	108	102	90	-12	8	-11,8	9,8
Produce other goods for household use	.	.	1
Construction or major repairs to own or household'	.	.	2	1	.	-1	.	-100,0	.
Hunting or fishing for household use	.	.	1	4	.	-4	.	-100,0	.
Involvement in at least one activity	84	78	91	105	93	-12	9	-11,4	10,7
Unemployed	24	17	14	16	18	2	-6	12,5	-25,0
Not economically active	60	61	77	67	63	-4	3	-6,0	5,0

For all values of 10 000 or lower the sample size is too small for reliable estimates.
 Due to rounding, numbers do not necessarily add up to totals.

Table 7: Involvement in non-market activities and labour market status by province (continued)									
	Jan-Mar 2010	Apr-Jun 2010	Jul-Sep 2010	Oct-Dec 2010	Jan-Mar 2011	Qrt to Qrt change	Year on year change	Qrt to Qrt change	Year on year change
	Thousand	Thousand	Thousand	Thousand	Thousand	Thousand	Thousand	Percent	Percent
Free State									
Subsistence farming	61	42	84	118	106	-12	45	-10,20	73,80
Fetching water or collecting wood/dung	13	13	49	35	34	-1	21	-2,90	161,50
Produce other goods for household use	5	5	5	5	8	3	3	60,00	60,00
Construction or major repairs to own or household'	5	8	9	12	19	7	14	58,30	280,00
Hunting or fishing for household use	11	10	17	24	19	-5	8	-20,80	72,70
Involvement in at least one activity	74	53	81	156	155	-1	81	-0,60	109,50
Unemployed	15	11	19	23	28	5	13	21,70	86,70
Not economically active	59	42	62	71	57	-14	-2	-19,70	-3,40
KwaZulu Natal									
Subsistence farming	506	429	515	749	853	104	347	13,9	68,6
Fetching water or collecting wood/dung	896	855	1 323	1 294	1 269	-25	373	-1,9	41,6
Produce other goods for household use	51	62	88	58	28	-30	-23	-51,7	-45,1
Construction or major repairs to own or household'	89	66	202	194	89	-105	0	-54,1	0,0
Hunting or fishing for household use	5	3	47	18	10	-8	5	-44,4	100,0
Involvement in at least one activity	1 095	1 011	1 202	1 608	1 684	76	589	4,7	53,8
Unemployed	149	148	146	171	141	-30	-8	-17,5	-5,4
Not economically active	946	862	1 056	1 106	1 164	58	218	5,2	23,0
North West									
Subsistence farming	75	65	81	75	83	8	8	10,7	10,7
Fetching water or collecting wood/dung	236	166	324	321	294	-27	58	-8,4	24,6
Produce other goods for household use	3	6	5	2	2	0	-1	0,0	-33,3
Construction or major repairs to own or household'	.	2	3	5	4	-1	.	-20,0	.
Hunting or fishing for household use	1	0	1	3	1	-2	0	-66,7	0,0
Involvement in at least one activity	262	205	296	350	333	-17	71	-4,9	27,1
Unemployed	76	60	73	76	60	-16	-16	-21,1	-21,1
Not economically active	186	144	223	222	223	1	37	0,5	19,9

For all values of 10 000 or lower the sample size is too small for reliable estimates.
 Due to rounding, numbers do not necessarily add up to totals.

Table 7: Involvement in non-market activities and labour market status by province (concluded)									
	Jan-Mar 2010	Apr-Jun 2010	Jul-Sep 2010	Oct-Dec 2010	Jan-Mar 2011	Qrt to Qrt change	Year on year change	Qrt to Qrt change	Year on year change
	Thousand	Thousand	Thousand	Thousand	Thousand	Thousand	Thousand	Percent	Percent
Gauteng									
Subsistence farming	28	40	47	28	21	-7	-7	-25,0	-25,0
Fetching water or collecting wood/dung	12	17	59	27	22	-5	10	-18,5	83,3
Produce other goods for household use	14	1	46	42	75	33	61	78,6	435,7
Construction or major repairs to own or household'	9	8	53	28	35	7	26	25,0	288,9
Hunting or fishing for household use	4	.	4		1	1	-3	.	-75,0
Involvement in at least one activity	63	57	87	110	142	32	79	29,1	125,4
Unemployed	36	29	34	10	17	7	-19	70,0	-52,8
Not economically active	27	28	53	33	36	3	9	9,1	33,3
Mpumalanga									
Subsistence farming	115	87	118	172	191	19	76	11,0	66,1
Fetching water or collecting wood/dung	178	161	279	296	238	-58	60	-19,6	33,7
Produce other goods for household use	4	3	52	44	57	13	53	29,5	1325,0
Construction or major repairs to own or household'	14	13	25	24	14	-10	0	-41,7	0,0
Hunting or fishing for household use				1	1	0	1	0,0	.
Involvement in at least one activity	242	214	334	439	396	-43	154	-9,8	63,6
Unemployed	57	63	108	120	119	-1	62	-0,8	108,8
Not economically active	185	151	227	238	193	-45	8	-18,9	4,3
Limpopo									
Subsistence farming	195	153	147	160	283	123	88	76,9	45,1
Fetching water or collecting wood/dung	868	823	1 168	1 158	1 061	-97	193	-8,4	22,2
Produce other goods for household use	5	2	15	3	6	3	1	100,0	20,0
Construction or major repairs to own or household'	6	6	19	8	9	1	3	12,5	50,0
Hunting or fishing for household use	3	5	3		1	1	-2	.	-66,7
Involvement in at least one activity	961	885	1 050	1 226	1 178	-48	217	-3,9	22,6
Unemployed	118	86	120	74	76	2	-42	2,7	-35,6
Not economically active	843	799	930	936	895	-41	52	-4,4	6,2

For all values of 10 000 or lower the sample size is too small for reliable estimates.
Due to rounding, numbers do not necessarily add up to totals.

Appendix 2A: Sampling variability for labour force characteristics by sex						
	Oct-Dec 2010 CV	Jan-Mar 2011 CV	Estimate	Lower 95%	Upper 95%	P-value
Both sexes						
Population 15-64 yrs						
Labour Force	0,6	0,6	213	42	384	0,02
Employed	0,7	0,7	-14	-165	137	0,86
Formal sector (Non-agricultural	1,0	1,0	56	-100	212	0,48
Informal sector (Non-agricultural	2,3	2,1	-46	-147	54	0,36
Agriculture	4,7	6,0	-24	-79	31	0,39
Private households	3,6	3,3	1	-70	71	0,99
Unemployed	2,1	2,0	227	75	379	0,00
Not economically active	0,7	0,7	-92	-263	79	0,29
Discouraged work-seekers	3,0	2,9	73	-35	180	0,18
Other(not economically active	0,7	0,7	-165	-335	5	0,06
Rates (%)						
Unemployment rate	1,9	1,8	1,0	0,2	1,8	0,01
Employed / population ratio (Absorption	0,7	0,7	-0,2	-0,7	0,3	0,41
Labour force participation rate	0,6	0,6	0,5	-0,1	1,0	0,09
Women						
Population 15-64 yrs						
Labour Force	0,8	0,9	164	46	281	0,01
Employed	1,0	1,1	-10	-108	89	0,85
Formal sector (Non-agricultural	1,4	1,5	-8	-99	84	0,87
Informal sector (Non-agricultural	3,2	3,1	-7	-63	48	0,80
Agriculture	7,3	7,7	-1	-32	30	0,96
Private households	3,5	3,5	7	-50	63	0,83
Unemployed	2,7	2,5	173	75	271	0,00
Not economically active	0,7	0,8	-111	-228	7	0,06
Discouraged work-seekers	3,4	3,6	38	-41	117	0,34
Other(not economically active	0,8	0,9	-149	-269	-28	0,02
Rates (%)						
Unemployment rate	2,3	2,2	1,6	0,6	2,7	0,00
Employed / population ratio (Absorption	1,0	1,1	-0,1	-0,8	0,4	0,58
Labour force participation rate	0,8	0,9	0,8	0,1	1,5	0,02

Appendix 2A: Sampling variability for labour force characteristics by sex (concluded)						
	Oct-Dec 2010 CV	Jan-Mar 2011 CV	Estimate	Lower 95%	Upper 95%	P-value
Men						
Population 15-64 yrs						
Labour Force	0,6	0,6	49	-58	157	0,36
Employed	0,9	0,8	-4	-117	108	0,94
Formal sector (Non-agricultural	1,2	1,3	64	-59	187	0,31
Informal sector (Non-agricultural	2,8	2,8	-39	-115	36	0,31
Agriculture	5,4	6,5	-23	-63	17	0,26
Private households	7,9	6,4	-6	-45	32	0,76
Unemployed	2,5	2,3	53	-44	152	0,28
Not economically active	1,0	1,0	18	-88	126	0,73
Discouraged work-seekers	4,0	3,6	35	-32	101	0,31
Other(not economically active	0,9	1,0	-16	-115	83	0,75
Rates (%)						
Unemployment rate	2,3	2,2	0,4	-0,5	1,4	0,35
Employed / population ratio (Absorption	0,9	0,8	-0,2	-1,0	0,5	0,52
Labour force participation rate	0,6	0,6	0,1	-0,6	0,7	0,88

Appendix 2.1A: Sampling variability for labour force characteristics by population group						
	Oct-Dec 2010 CV	Jan-Mar 2011 CV	Estimate	Lower 95%	Upper 95%	P-value
South Africa						
Population 15-64 yrs						
Labour Force	0,6	0,6	213	42	384	0,02
Employed	0,7	0,7	-14	-165	137	0,86
Unemployed	2,1	2,0	227	75	379	0,00
Not economically active	0,7	0,7	-92	-263	79	0,29
Rates (%)						
Unemployment rate	1,9	1,8	1,0	0,2	1,8	0,01
Employed / population ratio (Absorption)	0,7	0,7	-0,2	-0,7	0,3	0,41
Labour force participation rate	0,6	0,6	0,5	-0,1	1,0	0,09
Black/African						
Population 15-64 yrs						
Labour Force	0,7	0,7	174	29	319	0,02
Employed	0,9	0,9	9	-117	134	0,89
Unemployed	2,3	2,2	165	26	304	0,02
Not economically active	0,7	0,8	-58	-203	88	0,43
Rates (%)						
Unemployment rate	2,0	1,9	0,9	0,0	1,8	0,06
Employed / population ratio (Absorption)	0,9	0,9	0,2	-0,6	0,4	0,60
Labour force participation rate	0,7	0,7	0,5	-0,1	1,0	0,12
Coloured						
Population 15-64 yrs						
Labour Force	1,0	1,1	46	-6	97	0,09
Employed	1,6	1,7	11	-41	64	0,67
Unemployed	5,4	5,7	35	-2	70	0,06
Not economically active	1,7	1,9	-36	-89	15	0,17
Rates (%)						
Unemployment rate	5,2	5,4	1,3	-0,5	3,1	0,16
Employed / population ratio (Absorption)	1,6	1,7	0,2	-1,5	2,0	0,80
Labour force participation rate	1,0	1,1	1,3	-0,4	3,0	0,13

Appendix 2.1A: Sampling variability for labour force characteristics by population group (concluded)						
	Oct-Dec 2010 CV	Jan-Mar 2011 CV	Estimate	Lower 95%	Upper 95%	P-value
Indian/Asian						
Population 15-64 yrs						
Labour Force	2,2	2,3	-11	-32	11	0,34
Employed	2,3	3,0	-30	-52	-8	0,01
Unemployed	21,0	17,6	20	-2	41	0,08
Not economically active	3,4	3,4	14	-7	36	0,19
Rates (%)						
Unemployment rate	20,2	17,2	3,8	0,0	7,5	0,05
Employed / population ratio (Absorption)	2,3	3,0	-3,5	-5,9	-1,2	0,00
Labour force participation rate	2,2	2,3	-1,4	-3,7	0,9	0,24
White						
Population 15-64 yrs						
Labour Force	1,2	1,6	4	-58	67	0,89
Employed	1,3	1,8	-4	-64	56	0,91
Unemployed	12,0	11,1	8	-21	37	0,59
Not economically active	2,4	3,4	-12	-74	50	0,70
Rates (%)						
Unemployment rate	11,8	11,0	0,4	-1,0	1,7	0,59
Employed / population ratio (Absorption)	1,3	1,8	0,1	-1,9	2,0	0,96
Labour force participation rate	1,2	1,6	0,3	-1,7	2,3	0,76

Appendix 2.2A: Sampling variability for labour force characteristics by province						
	Oct-Dec 2010 CV	Jan-Mar 2011 CV	Estimate	Lower 95%	Upper 95%	P-value
South Africa						
Population 15-64 yrs						
Labour Force	0,6	0,6	213	42	384	0,02
Employed	0,7	0,7	-14	-165	137	0,86
Unemployed	2,1	2,0	227	75	379	0,00
Not economically active	0,7	0,7	-92	-263	79	0,29
Discouraged work-seekers	3,0	2,9	73	-35	180	0,18
Other	0,7	0,7	-165	-335	5	0,06
Rates (%)						
Unemployment rate	1,9	1,8	1,0	0,2	1,8	0,01
Employed / population ratio (Absorption	0,7	0,7	-0,2	-0,7	0,3	0,41
Labour force participation rate	0,6	0,6	0,5	-0,1	1,0	0,09
Western Cape						
Population 15-64 yrs						
Labour Force	1,2	1,3	24	-44	92	0,49
Employed	1,7	1,8	12	-51	76	0,71
Unemployed	5,1	5,7	12	-39	63	0,65
Not economically active	2,5	2,7	-10	-79	58	0,76
Discouraged work-seekers	30,0	28,7	-5	-20	10	0,53
Other	2,4	2,8	-6	-66	54	0,85
Rates (%)						
Unemployment rate	4,9	5,3	0,3	-1,7	2,3	0,78
Employed / population ratio (Absorption	1,7	1,8	0,1	-1,7	2,0	0,87
Labour force participation rate	1,2	1,3	0,4	-1,6	2,5	0,66

Appendix 2.2A: Sampling variability for labour force characteristics by province (continued)						
	Oct-Dec 2010 CV	Jan-Mar 2011 CV	Estimate	Lower 95%	Upper 95%	P-value
Eastern Cape						
Population 15-64 yrs						
Labour Force	2,6	2,3	49	-28	127	0,21
Employed	2,7	2,4	-3	-66	60	0,92
Unemployed	4,7	4,9	52	3	101	0,04
Not economically active	1,9	1,7	-37	-114	40	0,35
Discouraged work-seekers	7,0	7,7	-3	-48	42	0,90
Other	2,0	2,2	-34	-97	29	0,29
Rates (%)						
Unemployment rate	3,7	3,9	2,2	0,0	4,5	0,05
Employed / population ratio (Absorption	2,7	2,4	-0,2	-1,7	1,3	0,83
Labour force participation rate	2,6	2,3	1,0	-0,8	2,9	0,26
Northern Cape						
Population 15-64 yrs						
Labour Force	2,1	1,9	14	-4	32	0,12
Employed	3,0	2,5	-17	-34	1	0,06
Unemployed	6,6	7,0	30	17	44	0,00
Not economically active	2,2	2,2	-12	-30	6	0,18
Discouraged work-seekers	12,4	13,8	1	-9	10	0,88
Other	2,6	2,6	-12	-31	5	0,16
Rates (%)						
Unemployment rate	6,4	5,9	7,0	3,9	10,4	0,00
Employed / population ratio (Absorption	3,0	2,5	-2,5	-4,8	0,0	0,05
Labour force participation rate	2,1	1,9	1,7	-0,7	4,3	0,15

Appendix 2.2A: Sampling variability for labour force characteristics by province (continued)						
	Oct-Dec 2010 CV	Jan-Mar 2011 CV	Estimate	Lower 95%	Upper 95%	P-value
Free State						
Population 15-64 yrs						
Labour Force	1,5	1,4	5	-23	33	0,71
Employed	2,3	2,1	-5	-30	20	0,69
Unemployed	4,2	4,7	10	-16	37	0,45
Not economically active	2,0	1,9	-2	-30	26	0,89
Discouraged work-seekers	8,1	9,8	5	-9	19	0,47
Other	2,2	2,0	-7	-36	22	0,63
Rates (%)						
Unemployment rate	4,1	4,3	0,8	-1,3	3,0	0,45
Employed / population ratio (Absorption	2,3	2,1	-0,3	-1,7	1,0	0,61
Labour force participation rate	1,5	1,4	0,2	-1,3	1,7	0,81
KwaZulu Natal						
Population 15-64 yrs						
Labour Force	2,0	2,0	9	-65	82	0,82
Employed	1,8	2,0	-10	-74	54	0,77
Unemployed	7,3	7,1	19	-40	77	0,54
Not economically active	1,6	1,7	19	-54	93	0,61
Discouraged work-seekers	5,9	5,0	52	-16	120	0,14
Other	1,9	1,9	-33	-115	50	0,44
Rates (%)						
Unemployment rate	6,1	6,1	0,5	-1,2	2,3	0,53
Employed / population ratio (Absorption	1,8	2,0	-0,3	-1,3	0,7	0,54
Labour force participation rate	2,0	2,0	0,0	-1,2	1,0	0,92

Appendix 2.2A: Sampling variability for labour force characteristics by province (continued)						
	Oct-Dec 2010 CV	Jan-Mar 2011 CV	Estimate	Lower 95%	Upper 95%	P-value
North West						
Population 15-64 yrs						
Labour Force	3,0	3,1	-13	-51	26	0,52
Employed	4,0	4,1	-18	-49	13	0,26
Unemployed	7,7	6,3	5	-25	35	0,74
Not economically active	2,8	2,8	19	-20	57	0,34
Discouraged work-seekers	7,8	7,8	-9	-28	9	0,32
Other	3,0	2,6	28	-12	68	0,17
Rates (%)						
Unemployment rate	7,3	6,3	0,8	-1,8	3,4	0,52
Employed / population ratio (Absorption	4,0	4,1	-1,0	-2,5	0,5	0,21
Labour force participation rate	3,0	3,1	-0,8	-2,7	1,1	0,43
Gauteng						
Population 15-64 yrs						
Labour Force	1,1	1,1	77	-30	183	0,16
Employed	1,3	1,3	46	-46	138	0,32
Unemployed	4,4	4,0	31	-76	137	0,57
Not economically active	2,6	2,7	-46	-153	60	0,39
Discouraged work-seekers	12,5	12,2	10	-37	56	0,69
Other	2,4	2,6	-56	-167	55	0,32
Rates (%)						
Unemployment rate	3,8	3,4	0,2	-1,5	1,9	0,83
Employed / population ratio (Absorption	1,3	1,3	0,4	-0,8	1,6	0,51
Labour force participation rate	1,1	1,1	0,7	-0,7	2,1	0,31

Appendix 2.2A: Sampling variability for labour force characteristics by province (concluded)						
	Oct-Dec 2010 CV	Jan-Mar 2011 CV	Estimate	Lower 95%	Upper 95%	P-value
Mpumalanga						
Population 15-64 yrs						
Labour Force	1,8	1,8	40	3	77	0,04
Employed	2,6	2,2	1	-34	37	0,94
Unemployed	7,1	6,6	38	8	68	0,01
Not economically active	2,1	2,1	-30	-67	7	0,11
Discouraged work-seekers	7,8	8,1	1	-26	29	0,92
Other	2,5	2,8	-31	-70	7	0,11
Rates (%)						
Unemployment rate	6,3	5,5	2,1	0,0	4,3	0,05
Employed / population ratio (Absorption)	2,6	2,2	-0,1	-1,6	1,4	0,90
Labour force participation rate	1,8	1,8	1,5	-0,1	3,1	0,07
Limpopo						
Population 15-64 yrs						
Labour Force	3,0	3,3	8	-51	68	0,79
Employed	3,5	3,6	-21	-70	28	0,39
Unemployed	7,1	7,7	29	-8	66	0,12
Not economically active	1,6	1,8	8	-51	68	0,79
Discouraged work-seekers	5,2	4,9	21	-15	58	0,25
Other	1,6	1,9	-13	-70	44	0,65
Rates (%)						
Unemployment rate	7,0	6,9	2,4	-0,3	5,1	0,08
Employed / population ratio (Absorption)	3,5	3,6	-0,8	-2,3	0,7	0,30
Labour force participation rate	3,0	3,3	0,0	-1,7	1,9	0,94

Appendix 3.1A: Sampling variability for the employed by industry and sex						
	Oct-Dec 2010 CV	Jan-Mar 2011 CV	Estimate	Lower 95%	Upper 95%	P-value
Both sexes	0,7	0,7	-14	-165	137	0,86
Agriculture	4,7	6,0	-24	-79	31	0,39
Mining	6,9	8,1	15	-22	51	0,44
Manufacturing	2,8	3,0	20	-82	121	0,70
Utilities	10,5	10,4	3	-16	21	0,77
Construction	3,5	3,5	-25	-93	44	0,49
Trade	2,3	2,3	-13	-137	112	0,84
Transport	3,7	4,1	-34	-88	20	0,22
Finance	3,1	3,0	37	-47	120	0,39
Community and social services	2,0	2,1	2	-96	101	0,96
Private households	3,6	3,3	1	-70	71	0,99
Other	0,0					
Women	1,0	1,1	-10	-108	89	0,85
Agriculture	7,3	7,7	-1	-32	30	0,96
Mining	12,6	11,4	-4	-12	3	0,25
Manufacturing	4,5	5,3	16	-42	75	0,59
Utilities	16,4	19,2	3	-6	13	0,50
Construction	10,4	8,5	-2	-23	19	0,85
Trade	2,8	2,8	-8	-81	65	0,83
Transport	7,0	8,9	-22	-46	2	0,07
Finance	4,0	4,2	17	-29	61	0,48
Community and social services	2,5	2,3	-17	-87	53	0,63
Private households	3,5	3,5	7	-50	63	0,83
Other						
Men	0,9	0,8	-4	-117	108	0,94
Agriculture	5,4	6,5	-23	-63	17	0,26
Mining	7,7	8,8	19	-16	54	0,30
Manufacturing	2,9	3,2	3	-66	73	0,92
Utilities	12,4	12,7	-1	-16	15	0,94
Construction	3,7	3,6	-23	-86	41	0,49
Trade	3,1	2,9	-5	-91	81	0,91
Transport	4,2	4,4	-12	-58	35	0,63
Finance	4,0	3,7	20	-45	87	0,54
Community and social services	2,9	3,1	19	-47	85	0,56
Private households	7,9	6,4	-6	-45	32	0,76
Other	0,7	0	0	0	0	0,00

Appendix 3.4A: Sampling variability for the employed by province and sector						
	Oct-Dec 2010 CV	Jan-Mar 2011 CV	Estimate	Lower 95%	Upper 95%	P-value
South Africa	0,7	0,7	-14	-165	137	0,86
Formal sector (Non-agricultural)	1,0	1,0	56	-100	212	0,48
Informal sector (Non-agricultural)	2,3	2,1	-46	-147	54	0,36
Agriculture	4,7	6,0	-24	-79	31	0,39
Private households	3,6	3,3	1	-70	71	0,99
Western Cape	1,7	1,8	12	-51	76	0,71
Formal sector (Non-agricultural)	2,3	2,5	5	-57	68	0,87
Informal sector (Non-agricultural)	5,8	7,3	15	-10	39	0,23
Agriculture	9,0	11,8	-1	-36	35	0,97
Private households	8,0	9,7	-8	-30	15	0,50
Eastern Cape	2,7	2,4	-3	-66	60	0,92
Formal sector (Non-agricultural)	4,0	3,6	20	-35	75	0,47
Informal sector (Non-agricultural)	5,4	5,7	-40	-76	-4	0,03
Agriculture	14,7	26,5	-2	-26	22	0,87
Private households	11,9	10,9	19	-4	42	0,11
Northern Cape	3,0	2,5	-17	-34	1	0,06
Formal sector (Non-agricultural)	5,7	4,5	-9	-27	9	0,34
Informal sector (Non-agricultural)	13,5	14,1	0	-9	9	1,00
Agriculture	13,2	11,3	-1	-9	8	0,86
Private households	8,1	9,7	-7	-12	-2	0,00
Free State	2,3	2,1	-5	-30	20	0,69
Formal sector (Non-agricultural)	2,7	2,3	-7	-36	22	0,63
Informal sector (Non-agricultural)	7,6	7,5	4	-14	22	0,65
Agriculture	10,1	13,2	-2	-14	11	0,80
Private households	11,5	10,1	-1	-10	9	0,91
KwaZulu Natal	1,8	2,0	-10	-74	54	0,77
Formal sector (Non-agricultural)	2,7	2,7	5	-66	75	0,90
Informal sector (Non-agricultural)	5,5	4,6	19	-31	68	0,46
Agriculture	15,5	19,0	-13	-32	7	0,21
Private households	8,6	5,9	-20	-63	23	0,36

Appendix 3.4A: Sampling variability for the employed by province and sector (concluded)						
	Oct-Dec 2010 CV	Jan-Mar 2011 CV	Estimate	Lower 95%	Upper 95%	P-value
North West	4,0	4,1	-18	-49	13	0,26
Formal sector (Non-agricultural)	5,9	6,3	-25	-52	3	0,08
Informal sector (Non-agricultural)	7,3	10,0	-1	-17	15	0,90
Agriculture	15,3	23,1	6	-7	19	0,38
Private households	10,3	11,3	2	-7	12	0,66
Gauteng	1,3	1,3	46	-46	138	0,32
Formal sector (Non-agricultural)	1,9	1,9	38	-65	140	0,47
Informal sector (Non-agricultural)	5,5	5,1	-9	-66	47	0,74
Agriculture	35,7	37,1	7	-7	21	0,30
Private households	7,3	6,6	11	-28	49	0,58
Mpumalanga	2,6	2,2	1	-34	37	0,94
Formal sector (Non-agricultural)	4,0	3,0	-1	-33	31	0,96
Informal sector (Non-agricultural)	7,3	6,8	5	-16	26	0,64
Agriculture	9,7	10,4	-3	-12	4	0,37
Private households	7,6	8,1	1	-11	13	0,85
Limpopo	3,5	3,6	-22	-70	28	0,39
Formal sector (Non-agricultural)	5,0	4,7	31	-11	71	0,15
Informal sector (Non-agricultural)	6,8	5,7	-39	-77	0	0,05
Agriculture	9,7	9,6	-15	-29	-2	0,02
Private households	16,8	16,4	3	-14	19	0,76

Appendix 3.5A: Sampling variability for the employed by sex and occupation						
	Oct-Dec 2010 CV	Jan-Mar 2011 CV	Estimate	Lower 95%	Upper 95%	P-value
Both sexes	0,7	0,7	-14	-165	137	0,86
Manager	3,3	3,7	12	-53	76	0,72
Professional	3,4	4,5	-12	-71	46	0,68
Technician	2,8	2,7	-8	-85	68	0,83
Clerk	2,8	3,3	-93	-172	-14	0,02
Sales and services	2,9	2,9	22	-65	109	0,62
Skilled agriculture	14,3	11,8	2	-17	22	0,80
Craft and related trade	2,7	2,4	55	-25	135	0,17
Plant and machine operator	3,5	3,2	9	-60	76	0,81
Elementary	2,1	2,1	-8	-118	102	0,89
Domestic worker	3,4	3,6	8	-47	63	0,78
Other						
Women	1,0	1,1	-10	-108	89	0,85
Manager	5,4	6,2	4	-34	41	0,86
Professional	5,5	5,6	-15	-49	20	0,41
Technician	3,4	3,4	0	-52	53	1,00
Clerk	3,2	3,4	-54	-121	13	0,12
Sales and services	3,6	3,6	-12	-72	46	0,67
Skilled agriculture	24,6	19,3	1	-11	13	0,89
Craft and related trade	6,6	8,3	15	-20	50	0,39
Plant and machine operator	8,9	8,3	15	-14	42	0,31
Elementary	3,1	2,9	22	-47	92	0,53
Domestic worker	3,5	3,6	16	-37	68	0,55
Other						
Men	0,9	0,8	-4	-117	108	0,94
Manager	3,7	3,8	8	-41	57	0,74
Professional	4,7	6,1	2	-41	45	0,93
Technician	3,7	3,9	-8	-66	49	0,78
Clerk	5,3	5,9	-39	-81	3	0,07
Sales and services	3,9	3,6	35	-25	95	0,25
Skilled agriculture	15,3	13,1	1	-14	17	0,83
Craft and related trade	3,1	2,7	40	-34	114	0,29
Plant and machine operator	3,5	3,3	-6	-69	56	0,84
Elementary	2,7	2,6	-30	-115	55	0,49
Domestic worker	15,4	18,1	-8	-23	7	0,31
Other	0,7	0,7	-14	-165	137	0,86

Appendix 2B: Sampling variability for labour force characteristics by sex						
	Jan-Mar 2010 CV	Jan-Mar 2011 CV	Estimate	Lower 95%	Upper 95%	P-value
Both sexes						
Population 15-64 yrs						
Labour Force	0,5	0,6	11	-247	269	0,93
Employed	0,6	0,7	42	-202	286	0,74
Formal sector (Non-agricultural	0,9	1,0	22	-234	277	0,87
Informal sector (Non-agricultural	2,1	2,1	125	-4	254	0,06
Agriculture	4,2	6,0	-55	-145	36	0,24
Private households	2,9	3,3	-49	-143	44	0,30
Unemployed	1,7	2,0	-31	-264	202	0,79
Not economically active	0,6	0,7	486	228	743	0,00
Discouraged work-seekers	2,8	2,9	353	185	520	0,00
Other(not economically active	0,6	0,7	133	-106	372	0,27
Rates (%)						
Unemployment rate	1,5	1,8	-0,2	-1,4	1,0	0,75
Employed / population ratio (Absorption	0,6	0,7	-0,5	-1,3	0,3	0,20
Labour force participation rate	0,5	0,6	-0,8	-1,6	0,0	0,05
Women						
Population 15-64 yrs						
Labour Force	0,7	0,9	49	-130	226	0,60
Employed	1,0	1,1	-22	-187	139	0,77
Formal sector (Non-agricultural	1,4	1,5	-1	-153	145	0,95
Informal sector (Non-agricultural	3,1	3,1	36	-43	115	0,37
Agriculture	5,8	7,7	-35	-77	8	0,11
Private households	2,9	3,5	-21	-96	53	0,58
Unemployed	2,2	2,5	70	-73	217	0,33
Not economically active	0,7	0,8	171	-8	348	0,06
Discouraged work-seekers	3,1	3,6	183	74	292	0,00
Other(not economically active	0,7	0,9	-12	-184	157	0,88
Rates (%)						
Unemployment rate	2,0	2,2	0,7	-0,9	2,4	0,37
Employed / population ratio (Absorption	1,0	1,1	-0,6	-1,6	0,4	0,23
Labour force participation rate	0,7	0,9	-0,4	-1,4	0,7	0,53

Appendix 2B: Sampling variability for labour force characteristics by sex (Concluded)						
	Jan-Mar 2010 CV	Jan-Mar 2011 CV	Estimate	Lower 95%	Upper 95%	P-value
Men						
Population 15-64 yrs						
Labour Force	0,6	0,6	-39	-195	121	0,64
Employed	0,8	0,8	63	-100	232	0,44
Formal sector (Non-agricultural	1,1	1,3	23	-153	205	0,78
Informal sector (Non-agricultural	2,8	2,8	89	-8	185	0,07
Agriculture	4,9	6,5	-20	-84	43	0,53
Private households	6,8	6,4	-29	-76	19	0,24
Unemployed	2,1	2,3	-102	-241	35	0,14
Not economically active	0,9	1,0	314	158	473	0,00
Discouraged work-seekers	3,7	3,6	170	75	263	0,00
Other(not economically active	1,0	1,0	145	4	289	0,04
Rates (%)						
Unemployment rate	2,0	2,2	-1,0	-2,3	0,4	0,15
Employed / population ratio (Absorption	0,8	0,8	-0,5	-1,5	0,6	0,43
Labour force participation rate	0,6	0,6	-1,3	-2,4	-0,3	0,01

Appendix 2.1B: Sampling variability for labour force characteristics by population group						
	Jan-Mar 2010 CV	Jan-Mar 2011 CV	Estimate	Lower 95%	Upper 95%	P-value
South Africa						
Population 15-64 yrs						
Labour Force	0,5	0,6	11	-247	269	0,93
Employed	0,6	0,7	42	-202	286	0,74
Unemployed	1,7	2,0	-31	-264	202	0,79
Not economically active	0,6	0,7	486	228	743	0,00
Rates (%)						
Unemployment rate	1,5	1,8	-0,2	-1,4	1,0	0,75
Employed / population ratio (Absorption)	0,6	0,7	-0,5	-1,3	0,3	0,20
Labour force participation rate	0,5	0,6	-0,8	-1,6	0,0	0,05
Black/African						
Population 15-64 yrs						
Labour Force	0,6	0,7	90	-150	337	0,45
Employed	0,9	0,9	137	-91	364	0,24
Unemployed	1,9	2,2	-47	-264	178	0,70
Not economically active	0,7	0,8	379	138	625	0,00
Rates (%)						
Unemployment rate	1,7	1,9	-0,6	-2,1	1,0	0,48
Employed / population ratio (Absorption)	0,9	0,9	-0,2	-1,1	0,8	0,75
Labour force participation rate	0,6	0,7	-0,6	-1,6	0,4	0,22
Coloured						
Population 15-64 yrs						
Labour Force	1,2	1,1	-16	-78	44	0,59
Employed	1,7	1,7	-26	-93	42	0,46
Unemployed	5,6	5,7	10	-60	77	0,81
Not economically active	2,2	1,9	54	-8	114	0,09
Rates (%)						
Unemployment rate	5,3	5,4	0,7	-2,6	3,9	0,71
Employed / population ratio (Absorption)	1,7	1,7	-1,5	-3,7	0,8	0,21
Labour force participation rate	1,2	1,1	-1,4	-3,4	0,7	0,20

Appendix 2.1B: Sampling variability for labour force characteristics by population group (Concluded)						
	Jan-Mar 2010 CV	Jan-Mar 2011 CV	Estimate	Lower 95%	Upper 95%	P-value
Indian/Asian						
Population 15-64 yrs						
Labour Force	2,4	2,3	15	-19	51	0,36
Employed	2,6	3,0	1	-36	40	0,92
Unemployed	11,2	17,6	14	-11	40	0,27
Not economically active	3,5	3,4	0	-36	35	0,98
Rates (%)						
Unemployment rate	10,8	17,2	2,3	-2,2	6,9	0,31
Employed / population ratio (Absorption)	2,6	3,0	-0,8	-4,9	3,5	0,74
Labour force participation rate	2,4	2,3	0,6	-3,1	4,6	0,70
White						
Population 15-64 yrs						
Labour Force	1,0	1,6	-78	-163	-1	0,05
Employed	1,3	1,8	-70	-159	18	0,12
Unemployed	11,0	11,1	-8	-52	30	0,59
Not economically active	2,2	3,4	52	-30	132	0,21
Rates (%)						
Unemployment rate	11,1	11,0	-0,1	-2,2	1,6	0,77
Employed / population ratio (Absorption)	1,3	1,8	-1,7	-4,5	1,2	0,26
Labour force participation rate	1,0	1,6	-1,9	-4,6	0,7	0,14

Appendix 2.2B: Sampling variability for labour force characteristics by province						
	Jan-Mar 2010 CV	Jan-Mar 2011 CV	Estimate	Lower 95%	Upper 95%	P-value
South Africa						
Population 15-64 yrs						
Labour Force	0,5	0,6	11	-247	269	0,93
Employed	0,6	0,7	42	-202	286	0,74
Unemployed	1,7	2,0	-31	-264	202	0,79
Not economically active	0,6	0,7	485	228	743	0,00
Discouraged work-seekers	2,8	2,9	352	185	520	0,00
Other	0,6	0,7	133	-106	372	0,27
Rates (%)						
Unemployment rate	1,5	1,8	-0,2	-1,4	1,0	0,75
Employed / population ratio (Absorption	0,6	0,7	-0,5	-1,3	0,3	0,20
Labour force participation rate	0,5	0,6	-0,8	-1,6	0,0	0,05
Western Cape						
Population 15-64 yrs						
Labour Force	1,1	1,3	-10	-90	71	0,81
Employed	1,5	1,8	-52	-131	26	0,19
Unemployed	4,1	5,7	43	-22	107	0,19
Not economically active	2,4	2,7	64	-17	145	0,12
Discouraged work-seekers	19,9	28,7	-29	-44	-13	0,00
Other	2,4	2,8	92	15	170	0,02
Rates (%)						
Unemployment rate	4,0	5,3	1,9	-0,6	4,5	0,14
Employed / population ratio (Absorption	1,5	1,8	-2,4	-4,7	-0,1	0,04
Labour force participation rate	1,1	1,3	-1,4	-3,8	1,0	0,26

Appendix 2.2B: Sampling variability for labour force characteristics by province (Continued)						
	Jan-Mar 2010 CV	Jan-Mar 2011 CV	Estimate	Lower 95%	Upper 95%	P-value
Eastern Cape						
Population 15-64 yrs						
Labour Force	2,5	2,3	4	-119	127	0,95
Employed	3,1	2,4	58	-42	158	0,25
Unemployed	5,0	4,9	-54	-119	11	0,10
Not economically active	2,0	1,7	49	-74	173	0,43
Discouraged work-seekers	6,2	7,7	5	-70	80	0,90
Other	2,2	2,2	44	-79	167	0,48
Rates (%)						
Unemployment rate	4,3	3,9	-3,0	-6,0	-0,1	0,04
Employed / population ratio (Absorption	3,1	2,4	1,0	-1,4	3,4	0,42
Labour force participation rate	2,5	2,3	-0,5	-3,5	2,5	0,76
Northern Cape						
Population 15-64 yrs						
Labour Force	3,2	1,9	8	-21	37	0,58
Employed	3,9	2,5	-9	-38	20	0,54
Unemployed	10,0	7,0	17	-11	45	0,22
Not economically active	3,6	2,2	-1	-30	28	0,97
Discouraged work-seekers	10,1	13,8	-9	-22	4	0,16
Other	3,6	2,6	8	-21	38	0,58
Rates (%)						
Unemployment rate	8,7	5,9	3,9	-2,7	10,6	0,24
Employed / population ratio (Absorption	3,9	2,5	-1,7	-5,8	2,4	0,42
Labour force participation rate	3,2	1,9	0,5	-3,5	4,7	0,77

Appendix 2.2B: Sampling variability for labour force characteristics by province (Continued)						
	Jan-Mar 2010 CV	Jan-Mar 2011 CV	Estimate	Lower 95%	Upper 95%	P-value
Free State						
Population 15-64 yrs						
Labour Force	1,2	1,4	28	-8	64	0,13
Employed	2,0	2,1	9	-33	51	0,67
Unemployed	4,3	4,7	19	-14	52	0,27
Not economically active	1,5	1,9	-14	-50	22	0,45
Discouraged work-seekers	8,5	9,8	-14	-39	11	0,27
Other	1,5	2,0	0	-34	34	0,99
Rates (%)						
Unemployment rate	4,2	4,3	1,0	-1,9	4,0	0,49
Employed / population ratio (Absorption	2,0	2,1	0,2	-2,1	2,4	0,87
Labour force participation rate	1,2	1,4	1,1	-0,9	3,0	0,28
KwaZulu Natal						
Population 15-64 yrs						
Labour Force	1,4	2,0	-35	-185	115	0,65
Employed	1,8	2,0	-59	-190	73	0,38
Unemployed	5,1	7,1	24	-74	121	0,63
Not economically active	1,2	1,7	151	0	301	0,05
Discouraged work-seekers	4,8	5,0	88	17	160	0,02
Other	1,3	1,9	62	-83	208	0,40
Rates (%)						
Unemployment rate	4,8	6,1	1,0	-1,8	3,8	0,49
Employed / population ratio (Absorption	1,8	2,0	-1,6	-3,5	0,5	0,13
Labour force participation rate	1,4	2,0	-1,3	-3,6	0,9	0,25

Appendix 2.2B: Sampling variability for labour force characteristics by province (Continued)						
	Jan-Mar 2010 CV	Jan-Mar 2011 CV	Estimate	Lower 95%	Upper 95%	P-value
North West						
Population 15-64 yrs						
Labour Force	2,4	3,1	-13	-84	57	0,71
Employed	2,7	4,1	3	-69	75	0,94
Unemployed	6,1	6,3	-16	-59	27	0,46
Not economically active	2,2	2,8	38	-33	108	0,29
Discouraged work-seekers	8,4	7,8	48	16	81	0,00
Other	2,2	2,6	-11	-72	50	0,73
Rates (%)						
Unemployment rate	5,2	6,3	-1,3	-5,6	3,0	0,55
Employed / population ratio (Absorption	2,7	4,1	-0,3	-3,8	3,3	0,87
Labour force participation rate	2,4	3,1	-1,2	-4,7	2,2	0,48
Gauteng						
Population 15-64 yrs						
Labour Force	0,9	1,1	65	-100	230	0,44
Employed	1,3	1,3	55	-96	206	0,48
Unemployed	3,4	4,0	10	-162	183	0,91
Not economically active	2,2	2,7	55	-110	220	0,51
Discouraged work-seekers	11,6	12,2	70	-33	174	0,18
Other	2,2	2,6	-15	-149	119	0,83
Rates (%)						
Unemployment rate	3,1	3,4	-0,1	-2,9	2,6	0,93
Employed / population ratio (Absorption	1,3	1,3	-0,1	-2,1	1,9	0,92
Labour force participation rate	0,9	1,1	-0,3	-2,4	1,9	0,81

Appendix 2.2B: Sampling variability for labour force characteristics by province (Concluded)						
	Jan-Mar 2010 CV	Jan-Mar 2011 CV	Estimate	Lower 95%	Upper 95%	P-value
Mpumalanga						
Population 15-64 yrs						
Labour Force	2,2	1,8	26	-53	105	0,52
Employed	2,7	2,2	-5	-69	59	0,88
Unemployed	5,8	6,6	31	-41	103	0,40
Not economically active	2,6	2,1	13	-66	92	0,75
Discouraged work-seekers	7,9	8,1	43	-2	88	0,06
Other	2,6	2,8	-30	-104	43	0,42
Rates (%)						
Unemployment rate	5,0	5,5	1,9	-2,9	6,6	0,44
Employed / population ratio (Absorption	2,7	2,2	-0,8	-3,7	1,9	0,54
Labour force participation rate	2,2	1,8	0,2	-3,3	3,7	0,91
Limpopo						
Population 15-64 yrs						
Labour Force	2,6	3,3	-62	-152	27	0,17
Employed	2,9	3,6	42	-39	123	0,30
Unemployed	5,6	7,7	-105	-150	-59	0,00
Not economically active	1,5	1,8	130	41	220	0,00
Discouraged work-seekers	6,6	4,9	149	96	202	0,00
Other	1,7	1,9	-18	-105	68	0,68
Rates (%)						
Unemployment rate	4,7	6,9	-7,6	-11,0	-4,1	0,00
Employed / population ratio (Absorption	2,9	3,6	0,7	-1,7	3,2	0,57
Labour force participation rate	2,6	3,3	-2,7	-5,4	0,1	0,06

Appendix 3.1B: Sampling variability for the employed by industry and sex						
	Jan-Mar 2010 CV	Jan-Mar 2011 CV	Estimate	Lower 95%	Upper 95%	P-value
Both sexes	0,6	0,7	42	-202	286	0,74
Agriculture	4,2	6,0	-55	-145	36	0,24
Mining	7,3	8,1	10	-58	78	0,77
Manufacturing	2,6	3,0	48	-92	187	0,50
Utilities	11,4	10,4	25	1	48	0,04
Construction	3,2	3,5	-29	-124	68	0,56
Trade	2,0	2,3	80	-101	262	0,38
Transport	3,7	4,1	-70	-151	11	0,09
Finance	2,6	3,0	-50	-176	75	0,43
Community and social services	2,2	2,1	133	-34	300	0,12
Private households	2,9	3,3	-49	-143	44	0,30
Women	1,0	1,1	-22	-187	139	0,77
Agriculture	5,8	7,7	-35	-77	8	0,11
Mining	13,4	11,4	3	-9	15	0,62
Manufacturing	4,2	5,3	63	-15	141	0,11
Utilities	22,2	19,2	19	5	31	0,01
Construction	10,0	8,5	-17	-45	12	0,25
Trade	2,6	2,8	-5	-111	101	0,93
Transport	7,8	8,9	-46	-81	-13	0,01
Finance	3,5	4,2	-35	-111	38	0,33
Community and social services	2,4	2,3	52	-55	158	0,34
Private households	2,9	3,5	-21	-96	53	0,58
Men	0,8	0,8	63	-100	232	0,44
Agriculture	4,9	6,5	-20	-84	43	0,53
Mining	7,6	8,8	7	-57	71	0,83
Manufacturing	3,0	3,2	-16	-114	83	0,76
Utilities	13,1	12,7	6	-14	26	0,55
Construction	3,2	3,6	-12	-101	78	0,80
Trade	2,8	2,9	85	-38	208	0,17
Transport	4,2	4,4	-24	-99	53	0,55
Finance	3,3	3,7	-15	-102	74	0,76
Community and social services	3,0	3,1	81	-17	179	0,11
Private households	6,8	6,4	-29	-76	19	0,24

Appendix 3.4B: Sampling variability for the employed by province and sector						
	Jan-Mar 2010 CV	Jan-Mar 2011 CV	Estimate	Lower 95%	Upper 95%	P-value
South Africa	0,6	0,7	42	-202	286	0,74
Formal sector (Non-agricultural)	0,9	1,0	22	-234	277	0,87
Informal sector (Non-agricultural)	2,1	2,1	125	-4	254	0,06
Agriculture	4,2	6,0	-55	-145	36	0,24
Private households	2,9	3,3	-49	-143	44	0,30
Western Cape	1,5	1,8	-53	-131	26	0,19
Formal sector (Non-agricultural)	2,3	2,5	15	-75	104	0,75
Informal sector (Non-agricultural)	6,1	7,3	0	-38	38	1,00
Agriculture	6,6	11,8	-51	-91	-11	0,01
Private households	8,4	9,7	-17	-44	11	0,24
Eastern Cape	3,1	2,4	58	-42	158	0,25
Formal sector (Non-agricultural)	4,2	3,6	41	-64	144	0,45
Informal sector (Non-agricultural)	6,8	5,7	-2	-52	49	0,94
Agriculture	13,3	26,5	2	-38	44	0,89
Private households	10,0	10,9	17	-20	54	0,37
Northern Cape	3,9	2,5	-9	-38	20	0,54
Formal sector (Non-agricultural)	5,1	4,5	-17	-41	8	0,18
Informal sector (Non-agricultural)	15,2	14,1	5	-9	19	0,46
Agriculture	24,4	11,3	7	-13	28	0,46
Private households	9,5	9,7	-5	-13	2	0,13
Free State	2,0	2,1	10	-33	51	0,67
Formal sector (Non-agricultural)	4,3	2,3	3	-46	51	0,91
Informal sector (Non-agricultural)	7,3	7,5	15	-11	41	0,26
Agriculture	9,3	13,2	-13	-33	7	0,19
Private households	7,4	10,1	4	-15	24	0,66
KwaZulu Natal	1,8	2,0	-59	-190	73	0,38
Formal sector (Non-agricultural)	2,6	2,7	-50	-178	76	0,44
Informal sector (Non-agricultural)	5,7	4,6	45	-13	102	0,13
Agriculture	11,1	19,0	-12	-59	35	0,61
Private households	6,1	5,9	-40	-72	-9	0,01

Appendix 3.4B: Sampling variability for the employed by province and sector						
	Jan-Mar 2010 CV	Jan-Mar 2011 CV	Estimate	Lower 95%	Upper 95%	P-value
North West	2,7	4,1	3	-69	75	0,94
Formal sector (Non-agricultural)	4,2	6,3	7	-75	89	0,87
Informal sector (Non-agricultural)	7,7	10,0	0	-24	25	0,95
Agriculture	11,6	23,1	-1	-20	18	0,90
Private households	9,4	11,3	-4	-22	15	0,70
Gauteng	1,3	1,3	55	-96	206	0,48
Formal sector (Non-agricultural)	1,7	1,9	11	-149	169	0,90
Informal sector (Non-agricultural)	4,3	5,1	46	-22	114	0,18
Agriculture	29,4	37,1	2	-29	33	0,89
Private households	6,1	6,6	-4	-61	54	0,90
Mpumalanga	2,7	2,2	-5	-69	59	0,88
Formal sector (Non-agricultural)	3,4	3,0	-6	-55	44	0,82
Informal sector (Non-agricultural)	5,6	6,8	3	-33	40	0,87
Agriculture	10,6	10,4	4	-14	22	0,66
Private households	8,9	8,1	-6	-27	14	0,52
Limpopo	2,9	3,6	42	-39	123	0,30
Formal sector (Non-agricultural)	3,5	4,7	19	-35	73	0,49
Informal sector (Non-agricultural)	5,6	5,7	12	-32	57	0,59
Agriculture	18,1	9,6	6	-12	24	0,54
Private households	12,4	16,4	5	-34	45	0,78

Appendix 3.5B: Sampling variability for the employed by sex and occupation						
	Jan-Mar 2010 CV	Jan-Mar 2011 CV	Estimate	Lower 95%	Upper 95%	P-value
Both sexes	0,6	0,7	42	-202	286	0,74
Manager	2,7	3,7	136	39	233	0,01
Professional	4,1	4,5	55	-25	134	0,18
Technician	2,9	2,7	-54	-166	58	0,34
Clerk	2,6	3,3	-136	-250	-23	0,02
Sales and services	2,6	2,9	52	-98	202	0,50
Skilled agriculture	12,6	11,8	-15	-45	14	0,31
Craft and related trade	2,3	2,4	-6	-112	101	0,92
Plant and machine operator	3,8	3,2	43	-66	151	0,44
Elementary	2,0	2,1	-35	-193	123	0,66
Domestic worker	2,9	3,6	4	-72	81	0,91
Women	1,0	1,1	-22	-187	139	0,77
Manager	5,6	6,2	75	20	129	0,01
Professional	5,0	5,6	7	-37	52	0,75
Technician	3,5	3,4	-9	-89	71	0,83
Clerk	2,9	3,4	-96	-186	-8	0,03
Sales and services	3,2	3,6	-30	-115	54	0,48
Skilled agriculture	21,3	19,3	3	-9	14	0,68
Craft and related trade	6,7	8,3	1	-39	42	0,94
Plant and machine operator	9,5	8,3	34	-7	74	0,11
Elementary	2,9	2,9	-2	-91	83	0,93
Domestic worker	3,0	3,6	-2	-77	71	0,94
Men	0,8	0,8	63	-100	232	0,44
Manager	3,3	3,8	61	-13	137	0,11
Professional	5,9	6,1	47	-18	113	0,16
Technician	4,1	3,9	-44	-117	27	0,22
Clerk	4,7	5,9	-41	-102	22	0,21
Sales and services	3,2	3,6	82	-17	180	0,10
Skilled agriculture	12,9	13,1	-18	-40	5	0,13
Craft and related trade	2,5	2,7	-7	-110	95	0,89
Plant and machine operator	3,9	3,3	8	-87	105	0,85
Elementary	2,6	2,6	-33	-154	92	0,62
Domestic worker	17,1	18,1	6	-8	22	0,38