

**STATISTICAL RELEASE**  
**P0142.7**

# Export and Import Unit Value Indices

September 2016

Embargoed until:  
24 November 2016  
11:30

**ENQUIRIES:**  
Marietjie Bennett  
(012) 310 8077

**FORTHCOMING ISSUE:**  
October 2016

**EXPECTED RELEASE DATE**  
15 December 2016

[www.statssa.gov.za](http://www.statssa.gov.za)  
[info@statssa.gov.za](mailto:info@statssa.gov.za)  
T +27 12 310 8911  
F +27 12 310 8500

Private Bag X44, Pretoria, 0001, South Africa  
ISibalo House, Koch Street, Salvokop, Pretoria, 0002



**CONTENTS**

<b>Key findings for September 2016</b> .....	<b>3</b>
<b>Exports</b> .....	<b>3</b>
<b>Imports</b> .....	<b>3</b>
<b>TABLES</b> .....	<b>4</b>
Key figures and analytical series .....	4
Table A - Key figures .....	4
Table B - Analytical series .....	4
Table C - Exports.....	5
Table D - Imports.....	5
Figure 1 - Export and import unit value indices.....	5
Figure 2 - Export UVI rates of change (%).....	6
Figure 3 - Import UVI rates of change (%).....	6
Table 1 - Exports .....	7
Figure 4.1 - Contributions to the monthly percentage change in exports.....	8
Figure 4.2 - Contributions to the annual percentage change in exports.....	8
Table 2 - Imports.....	9
Figure 5.1 - Contributions to the monthly percentage change in imports.....	10
Figure 5.2 - Contributions to the annual percentage change in imports.....	10
<b>EXPLANATORY NOTES</b> .....	<b>11</b>
<b>GLOSSARY</b> .....	<b>11</b>
<b>GENERAL INFORMATION</b> .....	<b>12</b>

## Key findings for September 2016

### Exports

The UVI for exported commodities shows an annual rate of change of 1,2% in September 2016. From August 2016 to September 2016 the UVI for exported commodities increased by 2,5%.

The main contributors to the annual rate of 1,2% were metal products, machinery and equipment (2,8 percentage points) and agriculture (0,5 of a percentage point) (see Figure 4.2).

The main contributors to the monthly increase of 2,5% were ores and minerals (1,0 percentage point), metal products, machinery and equipment (1,0 percentage point) and beverages (0,4 of a percentage point) (see Figure 4.1).

### Imports

The UVI for imported commodities shows an annual rate of change of -5,3% in September 2016. From August 2016 to September 2016 the UVI for imported commodities decreased by 1,0%.

The main contributors to the annual rate of -5,3% were metal products, machinery and equipment (-2,8 percentage points), other transportable goods (-1,8 percentage points) and crude petroleum (-1,5 percentage points) (see Figure 5.2).

The main contributors to the monthly decrease of 1,0% were other transportable goods (-0,7 of a percentage point) and crude petroleum (-0,5 of a percentage point) (see Figure 5.1).

## TABLES

## Key figures and analytical series

Table A - Key figures

Product	Weight	Index (2012=100)			Percentage change	
		Sep 2015	Aug 2016	Sep 2016	Sep 2016 vs. Aug 2016	Sep 2016 vs. Sep 2015
Exports	100,00	114,9	113,5	116,3	2,5	1,2
Imports	100,00	122,7	117,4	116,2	-1,0	-5,3

Table B - Analytical series

Product	Weight	Index (2012=100)			Percentage change	
		Sep 2015	Aug 2016	Sep 2016	Sep 2016 vs. Aug 2016	Sep 2016 vs. Sep 2015
Exports excluding gold	93,44	117,6	113,4	116,6	2,8	-0,9
Exports excluding ores and minerals	81,68	121,9	122,8	124,8	1,6	2,4
Exports excluding basic metals	74,21	117,4	111,5	113,9	2,2	-3,0
Imports excluding crude petroleum	88,36	132,0	128,1	127,4	-0,5	-3,5

**PJ Lehohla**  
**Statistician-General**

Main index numbers and rates of change (%)

Table C - Exports

Base: 2012=100

Year and type	Jan	Feb	Mar	Apr	May	Jun	Jul	Aug	Sep	Oct	Nov	Dec	Average	
2014	Index	115,4	116,4	118,4	117,8	116,6	116,2	116,8	118,7	118,6	120,0	118,1	116,4	117,5
	Rate m/m	1,0	0,9	1,7	-0,5	-1,0	-0,3	0,5	1,6	-0,1	1,2	-1,6	-1,4	..
	Rate y/y	12,0	10,8	9,1	6,5	6,4	4,4	4,8	4,2	4,1	5,1	4,2	1,8	6,0
2015	Index	116,1	116,0	113,1	110,9	110,2	110,8	112,1	113,2	114,9	115,5	116,0	114,0	113,6
	Rate m/m	-0,3	-0,1	-2,5	-1,9	-0,6	0,5	1,2	1,0	1,5	0,5	0,4	-1,7	..
	Rate y/y	0,6	-0,3	-4,5	-5,9	-5,5	-4,6	-4,0	-4,6	-3,1	-3,8	-1,8	-2,1	-3,3
2016	Index	116,6	115,6	115,9	114,8	117,6	118,0	115,6	113,5	116,3	..	..	..	..
	Rate m/m	2,3	-0,9	0,3	-0,9	2,4	0,3	-2,0	-1,8	2,5	..	..	..	..
	Rate y/y	0,4	-0,3	2,5	3,5	6,7	6,5	3,1	0,3	1,2	..	..	..	..

Table D - Imports

Base: 2012=100

Year and type	Jan	Feb	Mar	Apr	May	Jun	Jul	Aug	Sep	Oct	Nov	Dec	Average	
2014	Index	127,3	128,9	130,6	131,6	132,5	132,7	132,0	130,7	130,4	130,0	129,0	127,9	130,3
	Rate m/m	1,3	1,3	1,3	0,8	0,7	0,2	-0,5	-1,0	-0,2	-0,3	-0,8	-0,9	..
	Rate y/y	21,0	20,6	20,7	20,8	21,8	21,5	19,2	15,3	12,5	9,2	4,5	1,8	15,3
2015	Index	126,2	123,8	121,7	120,9	120,4	120,7	121,8	122,4	122,7	123,8	124,1	125,0	122,8
	Rate m/m	-1,3	-1,9	-1,7	-0,7	-0,4	0,2	0,9	0,5	0,2	0,9	0,2	0,7	..
	Rate y/y	-0,9	-4,0	-6,8	-8,1	-9,1	-9,0	-7,7	-6,4	-5,9	-4,8	-3,8	-2,3	-5,8
2016	Index	125,9	126,0	122,5	121,5	119,2	123,2	121,4	117,4	116,2	..	..	..	..
	Rate m/m	0,7	0,1	-2,8	-0,8	-1,9	3,4	-1,5	-3,3	-1,0	..	..	..	..
	Rate y/y	-0,2	1,8	0,7	0,5	-1,0	2,1	-0,3	-4,1	-5,3	..	..	..	..

Figure 1 - Export and import unit value indices

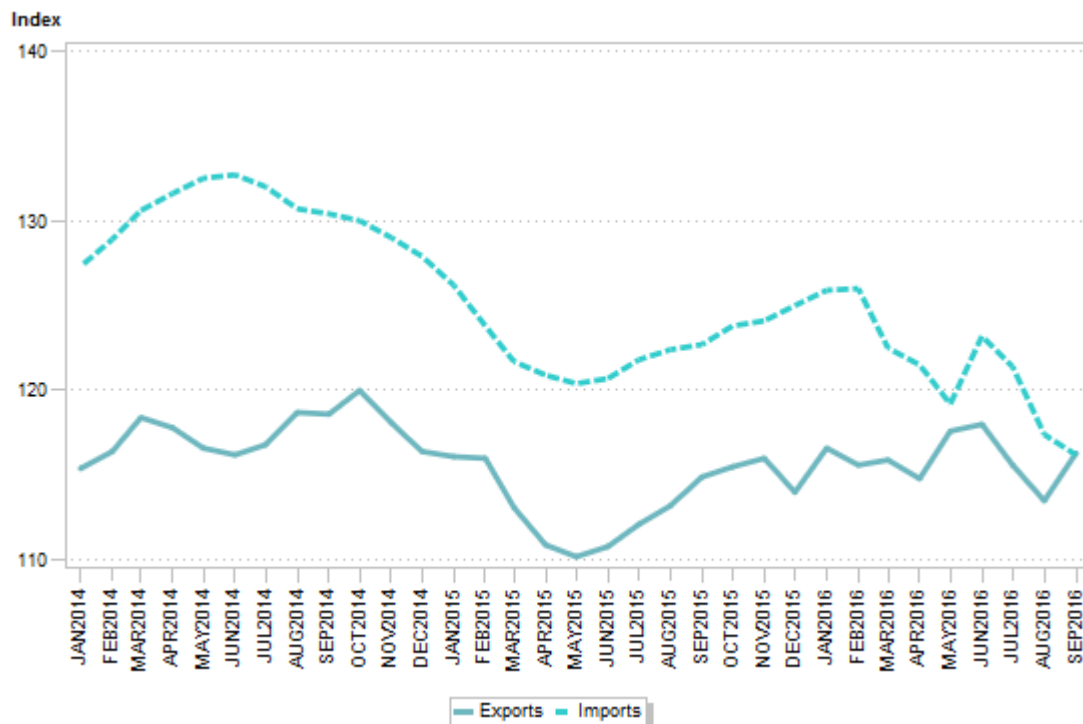


Figure 2 - Export UVI rates of change (%)

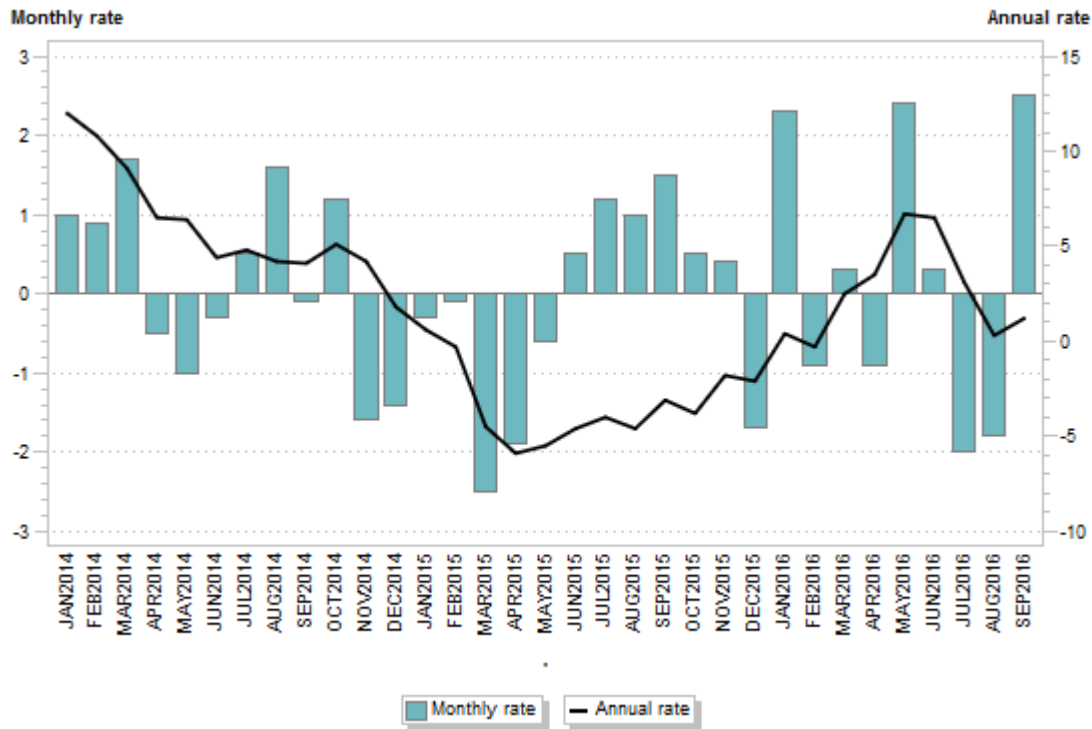
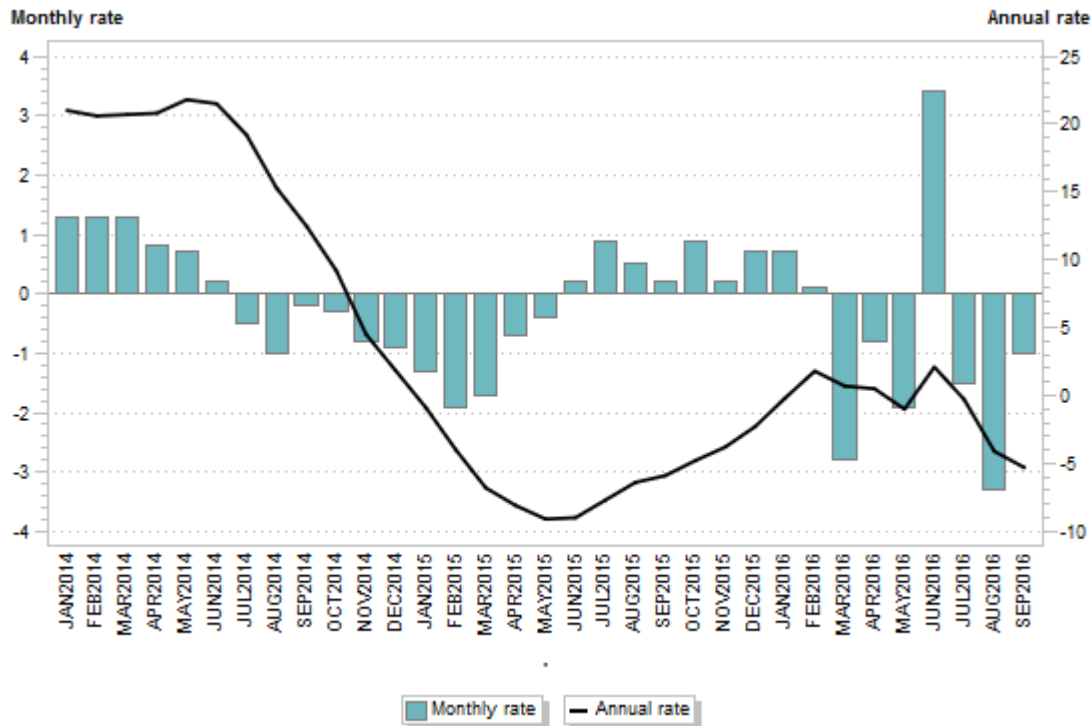


Figure 3 - Import UVI rates of change (%)

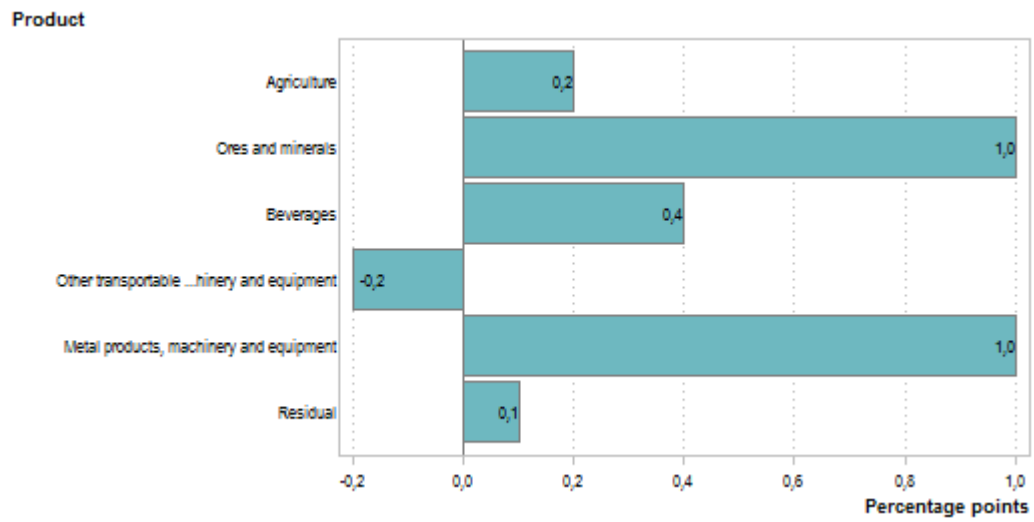


## Detailed index numbers and rates of change, and contributions

Table 1 - Exports

Product		Weight	Index (2012=100)			Percentage change	
			Sep 2015	Aug 2016	Sep 2016	Sep 2016 vs. Aug 2016	Sep 2016 vs. Sep 2015
All items		100,00	114,9	113,5	116,3	2,5	1,2
Agriculture		5,27	141,4	148,5	152,7	2,8	8,0
Ores and minerals		18,32	90,8	80,0	85,9	7,4	-5,4
Coal		6,14	92,5	88,7	97,0	9,4	4,9
Metal ores		12,18	87,7	84,9	90,1	6,1	2,7
Iron ores and concentrates		6,25	82,9	82,3	79,9	-2,9	-3,6
Non-ferrous metal ores and concentrates		5,93	95,0	90,0	100,9	12,1	6,2
Beverages		7,86	156,1	153,8	159,1	3,4	1,9
Other transportable goods, except metal products, machinery and equipment		19,45	116,7	107,3	106,3	-0,9	-8,9
Coke oven and refined petroleum products		5,36	116,2	108,7	104,7	-3,7	-9,9
Basic chemicals		6,29	112,7	101,0	100,1	-0,9	-11,2
Other chemical products		4,00	130,2	107,4	111,5	3,8	-14,4
Rubber and plastic products		1,75	126,8	139,8	143,8	2,9	13,4
Waste and scrap		2,05	107,6	106,2	99,9	-5,9	-7,2
Metal products, machinery and equipment		49,10	116,8	121,0	123,4	2,0	5,7
Basic metals		25,79	106,5	116,2	120,3	3,5	13,0
Basic iron and steel		4,97	120,2	105,1	110,4	5,0	-8,2
Products of iron or steel		2,18	101,7	113,4	120,5	6,3	18,5
Basic precious metals and metals clad with precious metals		15,57	98,4	114,7	119,8	4,4	21,7
Other semi-finished metal products		3,07	131,4	148,4	142,7	-3,8	8,6
Fabricated metal products		1,65	120,5	108,3	106,5	-1,7	-11,6
General purpose machinery		4,47	116,6	106,1	107,4	1,2	-7,9
Special-purpose machinery		2,77	124,4	116,7	114,3	-2,1	-8,1
Transport equipment		12,18	119,0	121,3	120,7	-0,5	1,4
Motor vehicles		11,44	115,8	119,6	119,0	-0,5	2,8
Parts and accessories for motor vehicles and their engines		0,74	152,2	134,3	135,3	0,7	-11,1
Other machinery and equipment		2,24	184,1	195,3	198,4	1,6	7,8

**Figure 4.1 - Contributions to the monthly percentage change in exports**



**Figure 4.2 - Contributions to the annual percentage change in exports**

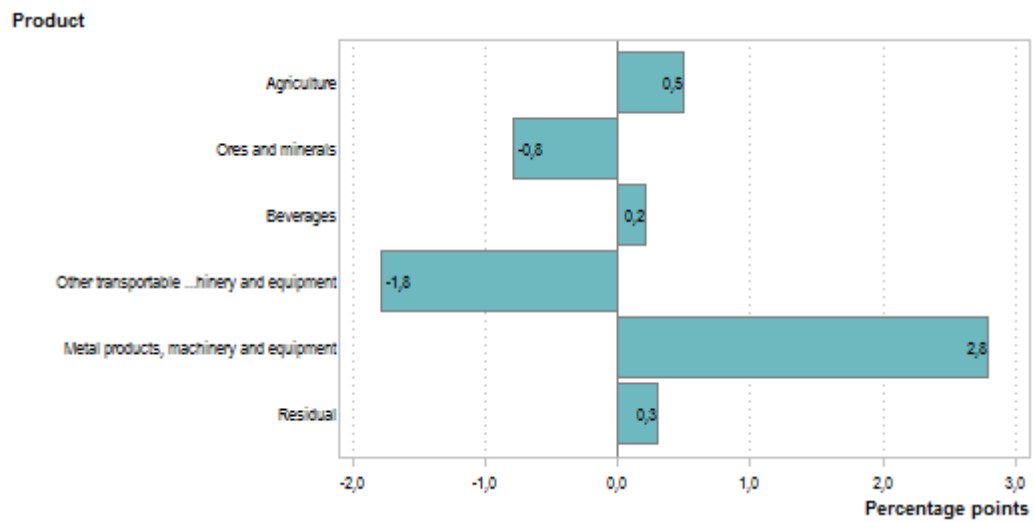
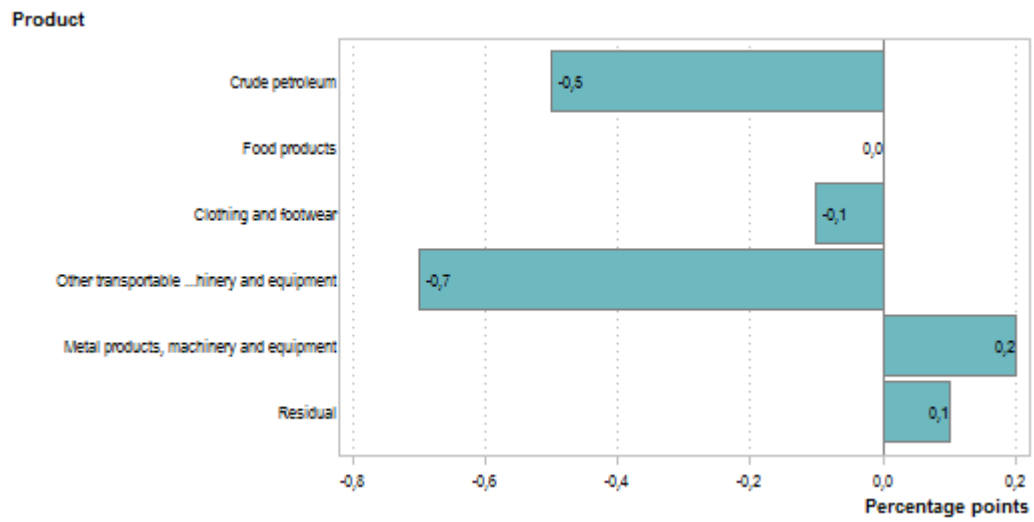


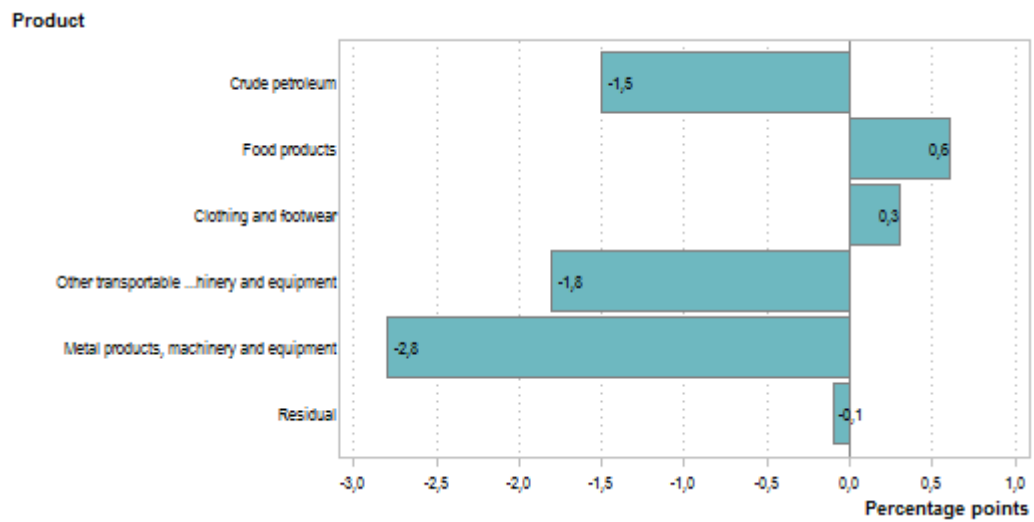
Table 2 - Imports

Product	Weight	Index (2012=100)			Percentage change	
		Sep 2015	Aug 2016	Sep 2016	Sep 2016 vs. Aug 2016	Sep 2016 vs. Sep 2015
All items	100,00	122,7	117,4	116,2	-1,0	-5,3
Crude petroleum	11,64	81,1	70,0	64,9	-7,3	-20,0
Food products	6,30	107,6	119,2	120,1	0,8	11,6
Fats and oils	3,61	97,3	101,6	103,0	1,4	5,9
Grain mill products	2,69	120,2	141,7	141,6	-0,1	17,8
Clothing and footwear	5,36	134,8	143,6	141,4	-1,5	4,9
Clothing	3,31	139,9	148,4	145,1	-2,2	3,7
Footwear	2,05	126,7	136,4	135,9	-0,4	7,3
Other transportable goods, except metal products, machinery and equipment	27,66	129,9	124,9	122,0	-2,3	-6,1
Paper and paperboard	1,95	138,3	147,1	145,5	-1,1	5,2
Coke oven and refined petroleum products	6,86	164,7	154,4	139,7	-9,5	-15,2
Basic chemicals	6,17	129,5	122,3	123,3	0,8	-4,8
Pharmaceutical and other chemical products	7,45	123,3	114,0	111,6	-2,1	-9,5
Pharmaceutical products	4,72	122,0	108,3	106,3	-1,8	-12,9
Other chemical products	2,73	125,8	122,7	119,8	-2,4	-4,8
Rubber and plastic products	3,07	118,6	121,9	121,5	-0,3	2,4
Other transportable goods	2,16	75,3	101,5	101,5	0,0	34,8
Metal products, machinery and equipment	49,04	137,3	130,0	130,4	0,3	-5,0
Basic metals	4,48	110,3	105,1	103,8	-1,2	-5,9
Fabricated metal products, except machinery and equipment	2,12	152,9	168,3	177,4	5,4	16,0
General purpose machinery	6,46	133,3	122,0	117,7	-3,5	-11,7
Special purpose machinery	6,94	125,9	114,0	113,8	-0,2	-9,6
Machinery for mining, quarrying and construction, and parts thereof	2,36	134,5	110,0	112,2	2,0	-16,6
Agricultural or forestry machinery and parts thereof	0,76	135,0	91,3	96,8	6,0	-28,3
Other machinery and parts thereof	3,82	115,1	118,0	115,1	-2,5	0,0
Office, accounting and computing machinery	3,40	136,7	110,2	107,1	-2,8	-21,7
Electrical machinery and apparatus	5,05	138,1	120,3	122,5	1,8	-11,3
Radio, television and communication equipment and apparatus	6,68	172,2	159,2	162,2	1,9	-5,8
Medical appliances, precision and optical instruments, watches and clocks	3,16	133,9	119,7	125,9	5,2	-6,0
Transport equipment	10,75	136,9	142,1	142,5	0,3	4,1
Vehicles	9,05	134,6	144,6	144,8	0,1	7,6
Bodies and parts of vehicles	1,70	126,6	107,6	108,6	0,9	-14,2

**Figure 5.1 - Contributions to the monthly percentage change in imports**



**Figure 5.2 - Contributions to the annual percentage change in imports**



**EXPLANATORY NOTES**

<b>Purpose and results</b>	The unit value index provides information on the trends in import and export unit values that are weighted with quantities of the current reference period. The calculation of unit value indices of commodities in exports and imports covers transactions reported by the South African Revenue Service. The results are used to compile export and import unit value indices, which are a measure of changes in export prices of locally produced commodities and changes in prices of imported commodities. Further information can be found in the XMUVI sources and methods document which can be accessed on this website: <a href="http://www.statssa.gov.za/?page_id=2528">http://www.statssa.gov.za/?page_id=2528</a> .
<b>Source</b>	South African Revenue Service (SARS).
<b>Gold</b>	The export unit value index for gold is calculated from net gold values and quantities obtained from the South African Reserve Bank (SARB) quarterly.  The index changes quarterly and is published in this publication with a one quarter lag (e.g. the September 2013 gold value and quantity will only be included in the December 2013 publication).

**GLOSSARY**

<b>Chain linking</b>	The construction of a continuous price series by multiplying together price indices that have been using different weights for different periods. The resulting index is referred to as a chained index (Practical Guide to producing Consumer Price Indices; 2009). Linking is intended to ensure that the individual indices on all levels show the correct development through time, but leads to non-additivity (IMF, 2005).
<b>Contributions</b>	The contribution (percentage points) of a sub-index to the percentage change in the total index for a given period is calculated by multiplying the difference (i.e. change) in the sub-index by its weight and then dividing by the previous period's total index. In the case of annual percentage changes, the contributions are approximations owing to annual changes in weights.
<b>Percentage change</b>	The percentage change in an index for any given period is the change between that period's index value and the previous period's index value expressed as a percentage of the latter.

## GENERAL INFORMATION

Stats SA publishes approximately 300 different statistical releases each year. It is not economically viable to produce them in more than one of South Africa's eleven official languages. Since the releases are used extensively, not only locally but also by international economic and social-scientific communities, Stats SA releases are published in English only.

Stats SA has copyright on this publication. Users September apply the information as they wish, provided that they acknowledge Stats SA as the source of the basic data wherever they process, apply, utilise, publish or distribute the data; and also that they specify that the relevant application and analysis (where applicable) result from their own processing of data.

### Advance release calendar

An advance release calendar is disseminated on <http://www.statssa.gov.za>

### Forthcoming issues

Issue	Expected release date
October 2016	15 December 2016
November 2016	26 January 2017
December 2016	23 February 2017

### Stats SA products

A complete set of Stats SA publications is available in the Stats SA Library and the following libraries:

National Library of South Africa, Pretoria Division  
 National Library of South Africa, Cape Town Division  
 Natal Society Library, Pietermaritzburg  
 Library of Parliament, Cape Town  
 Bloemfontein Public Library  
 Johannesburg Public Library  
 Eastern Cape Library Services, King William's Town  
 Central Regional Library, Polokwane  
 Central Reference Library, Mbombela  
 Central Reference Collection, Kimberley  
 Central Reference Library, Mmabatho

Stats SA also provides a subscription service.

### Electronic services

A large range of data is available via on-line services. For more detail about our electronic data services, contact Stats SA's user information service at (012) 310 8600.

You can visit us on the Internet at: <http://www.statssa.gov.za>

### Enquiries

<b>Telephone number - technical enquiries</b>	Patrick Kelly / Marietjie Bennett (012) 310 8920 / 8077
<b>Telephone number - other</b>	(012) 310 8920 / 8077 (survey area) (012) 310 8600 / 8390 / 8351 / 4892 / 8496 / 8095 (user information services) (012) 310 8490 (library)
<b>Email address</b>	PatrickKe@statssa.gov.za (technical enquiries) MarietjieB@statssa.gov.za (technical enquiries) info@statssa.gov.za (user information services) distribution@statssa.gov.za (orders)
<b>Postal address</b>	Private Bag X44, Pretoria, 0001

**Produced by Stats SA**