



stats sa

Department:
Statistics South Africa
REPUBLIC OF SOUTH AFRICA

Private Bag X44, Pretoria, 0001, South Africa, ISibalo House, Koch Street, Salvokop, Pretoria, 0002

www.statssa.gov.za, info@statssa.gov.za, Tel +27 12 310 8911

STATISTICAL RELEASE

P0142.7

Export and Import Unit Value Indices

July 2021

**Embargoed until:
23 September 2021
11:30**

ENQUIRIES:
Evashnie Govender
(012) 310 0176

FORTHCOMING ISSUE:
August 2021

EXPECTED RELEASE DATE:
21 October 2021

Dipalopalo tsa Aforikaborwa • Dipalopalo tsa Aforika Borwa • Ezazibalo zaseNingizimu Afrika • Tshitatistika Afrika Tshipembe • Tinhlayo Afrika-Dzonga

Statistieke Suid-Afrika • Dipalopalo tša Aforika Borwa • Telubalo zaseNingizimu Afrika • EzeeNkcukacha maNani zoMzantsi Afrika • Iimbalobalo zeSewula Afrika

IMPROVING LIVES THROUGH DATA ECOSYSTEMS



CONTENTS

KEY FINDINGS AS AT JUNE 2021	3
Exports	3
Imports.....	3
KEY FIGURES AND ANALYTICAL SERIES.....	4
Table A - Key figures	4
Table B - Analytical series	4
DETAILED RESULTS	5
Main index numbers and rates of change (%).....	5
Table C - Exports	5
Table D - Imports	5
Figure 1 - Export and import unit value indices.....	5
Figure 2 - Export UVI rates of change (%)	6
Figure 3 - Import UVI rates of change (%).....	6
Detailed index numbers and rates of change, and contributions	7
Table 1 - Exports.....	7
Figure 4.1 - Contributions to the monthly percentage change in exports	8
Figure 4.2 - Contributions to the annual percentage change in exports	8
Table 2 - Imports	9
Figure 5.1 - Contributions to the monthly percentage change in imports.....	10
Figure 5.2 - Contributions to the annual percentage change in imports	10
EXPLANATORY NOTES	11
GLOSSARY.....	11
GENERAL INFORMATION	12

KEY FINDINGS AS AT JULY 2021

Exports

The UVI for exported commodities shows an annual rate of change of 9,5% in July 2021. From June 2021 to July 2021 the UVI for exported commodities increased by 2,0%.

The main contributors to the annual rate of 9,5% were metal products, machinery and equipment (5,2 percentage points) and ores and minerals (4,8 percentage points) (see Figure 4.2).

The main contributor to the monthly increase of 2,0% was ores and minerals (2,0 percentage points) (see Figure 4.1).

Imports

The UVI for imported commodities shows an annual rate of change of -6,8% in July 2021. From June 2021 to July 2021 the UVI for imported commodities increased by 0,1%.

The main contributor to the annual rate of -6,8% was metal products, machinery and equipment (-8,0 percentage points) (see Figure 5.2).

The main contributor to the monthly increase of 0,1% was crude petroleum (1,0 percentage point) (see Figure 5.1).

KEY FIGURES AND ANALYTICAL SERIES

Table A - Key figures

Product	Weight	Index (Dec 2020=100)			Percentage change	
		Jul 2020	Jun 2021	Jul 2021	Jul 2021 vs. Jun 2021	Jul 2021 vs. Jul 2020
Exports	100,00	97,7	104,9	107,0	2,0	9,5
Imports	100,00	105,6	98,3	98,4	0,1	-6,8

Table B - Analytical series

Product	Weight	Index (Dec 2020=100)			Percentage change	
		Jul 2020	Jun 2021	Jul 2021	Jul 2021 vs. Jun 2021	Jul 2021 vs. Jul 2020
Exports excluding gold	92,41	99,2	106,3	108,7	2,3	9,6
Exports excluding ores and minerals	77,15	96,6	102,6	102,8	0,2	6,4
Exports excluding basic metals	71,21	100,9	101,6	105,1	3,4	4,2
Imports excluding crude petroleum	89,92	104,7	94,4	93,3	-1,2	-10,9

Risenga Maluleke
Statistician-General

DETAILED RESULTS

Main index numbers and rates of change (%)

Table C - Exports

Base: Dec 2020=100

Year and type	Jan	Feb	Mar	Apr	May	Jun	Jul	Aug	Sep	Oct	Nov	Dec	Average	
2019	Index	88,8	86,8	90,1	89,0	89,2	89,9	87,0	91,6	89,2	88,9	88,5	89,1	89,0
	Rate m/m	-2,6	-2,3	3,8	-1,2	0,2	0,8	-3,2	5,3	-2,6	-0,3	-0,4	0,7	..
	Rate y/y	5,7	3,3	6,9	5,7	4,7	3,5	-1,6	1,1	-3,4	-3,2	-3,3	-2,3	1,3
2020	Index	89,8	92,9	98,1	101,6	98,7	97,7	97,7	98,6	100,0	100,6	100,5	100,0	98,0
	Rate m/m	0,8	3,5	5,6	3,6	-2,9	-1,0	0,0	0,9	1,4	0,6	-0,1	-0,5	..
	Rate y/y	1,1	7,0	8,9	14,2	10,7	8,7	12,3	7,6	12,1	13,2	13,6	12,2	10,1
2021	Index	103,1	103,7	105,9	105,5	106,4	104,9	107,0
	Rate m/m	3,1	0,6	2,1	-0,4	0,9	-1,4	2,0
	Rate y/y	14,8	11,6	8,0	3,8	7,8	7,4	9,5

Table D - Imports

Base: Dec 2020=100

Year and type	Jan	Feb	Mar	Apr	May	Jun	Jul	Aug	Sep	Oct	Nov	Dec	Average	
2019	Index	116,2	113,0	114,3	117,8	117,5	116,2	112,3	111,1	112,9	111,5	109,7	109,1	113,5
	Rate m/m	-3,2	-2,8	1,2	3,1	-0,3	-1,1	-3,4	-1,1	1,6	-1,2	-1,6	-0,5	..
	Rate y/y	-4,9	-4,6	-1,1	3,2	-0,5	-3,8	-8,6	-8,4	-9,6	-13,2	-13,2	-9,2	-6,3
2020	Index	108,2	107,9	107,7	104,9	104,5	101,4	105,6	103,4	105,1	103,1	101,4	100,0	104,4
	Rate m/m	-0,8	-0,3	-0,2	-2,6	-0,4	-3,0	4,1	-2,1	1,6	-1,9	-1,6	-1,4	..
	Rate y/y	-6,9	-4,5	-5,8	-11,0	-11,1	-12,7	-6,0	-6,9	-6,9	-7,5	-7,6	-8,3	-8,0
2021	Index	98,8	98,5	99,3	101,0	99,6	98,3	98,4
	Rate m/m	-1,2	-0,3	0,8	1,7	-1,4	-1,3	0,1
	Rate y/y	-8,7	-8,7	-7,8	-3,7	-4,7	-3,1	-6,8

Figure 1 - Export and import unit value indices

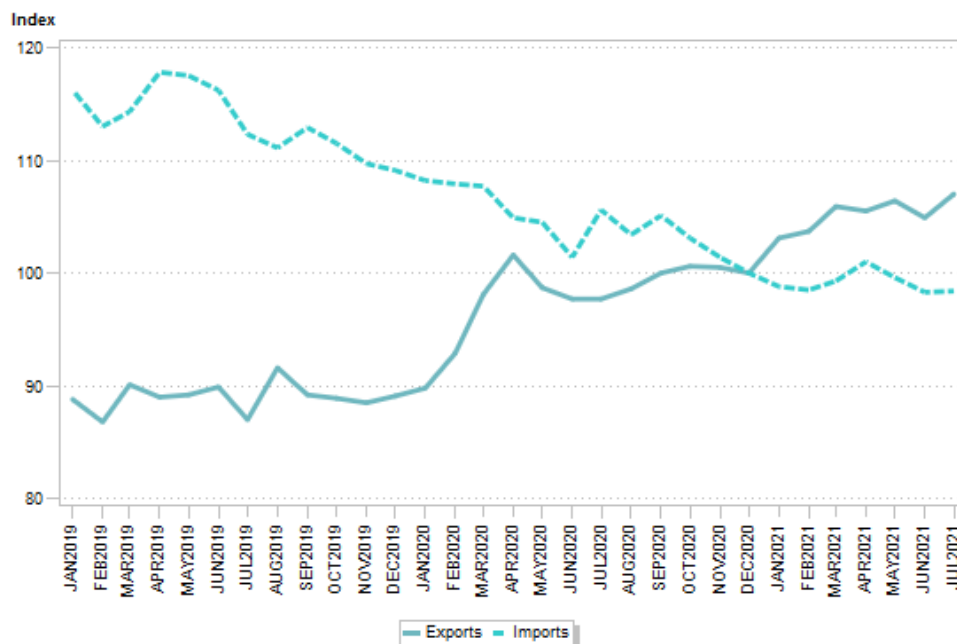


Figure 2 - Export UVI rates of change (%)

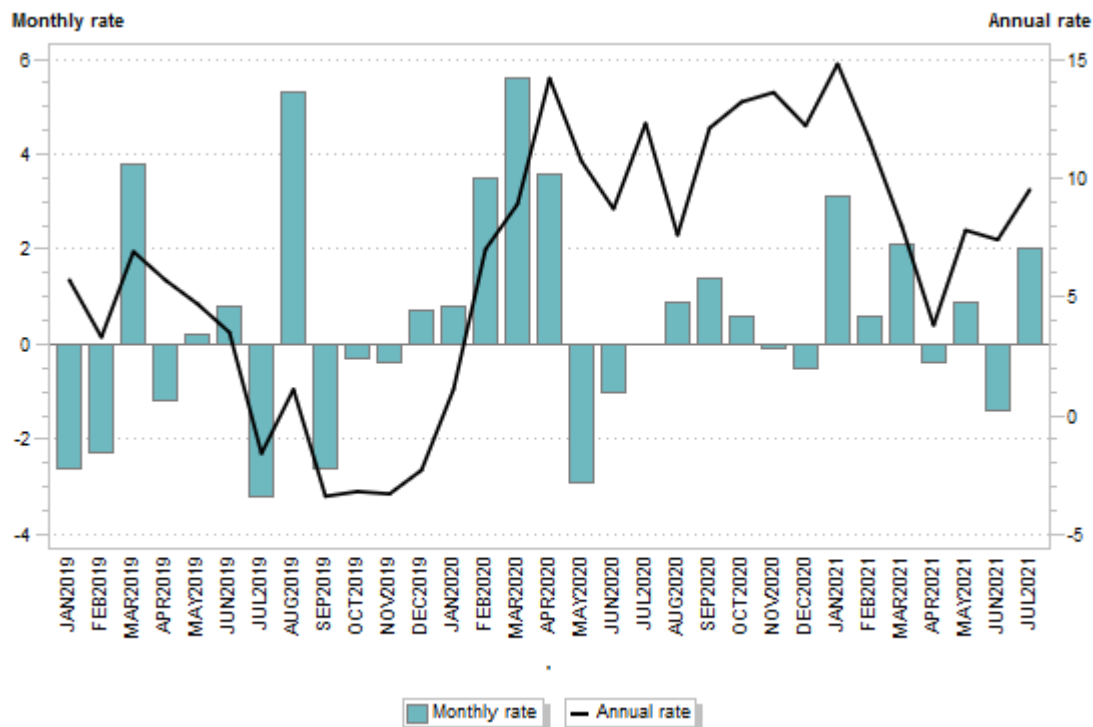
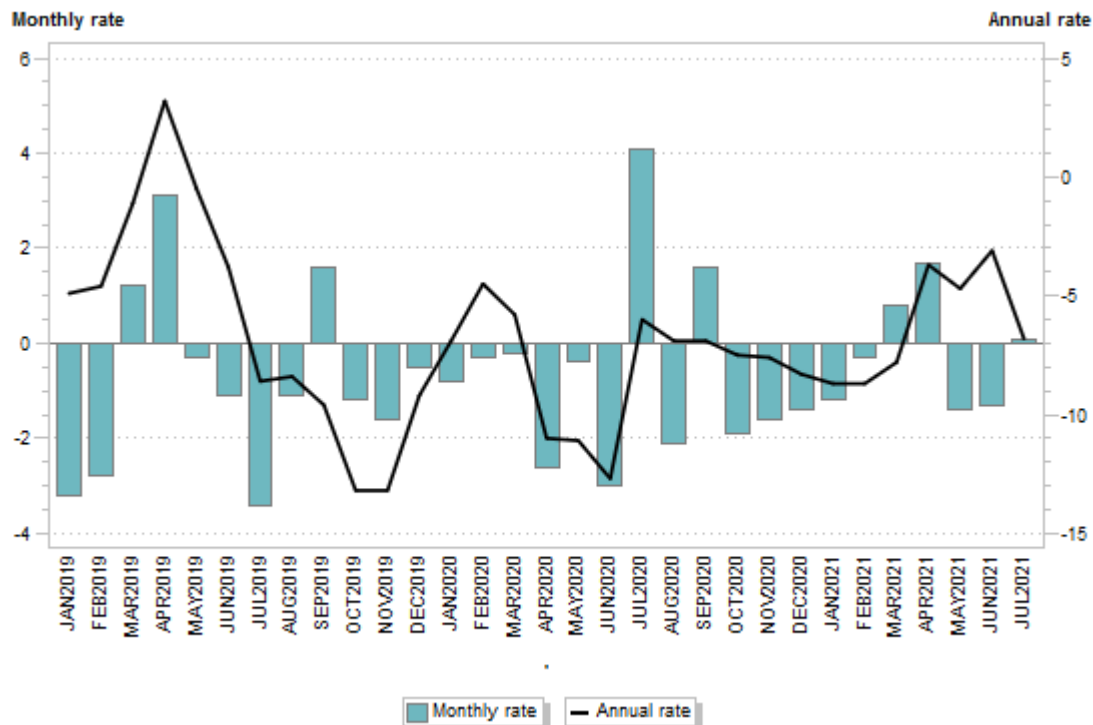


Figure 3 - Import UVI rates of change (%)



Detailed index numbers and rates of change, and contributions

Table 1 - Exports

Product	Weight	Index (Dec 2020=100)			Percentage change	
		Jul 2020	Jun 2021	Jul 2021	Jul 2021 vs. Jun 2021	Jul 2021 vs. Jul 2020
All items	100,00	97,7	104,9	107,0	2,0	9,5
Agriculture	5,85	102,8	80,3	83,3	3,7	-19,0
Ores and minerals	22,85	101,0	112,4	121,5	8,1	20,3
Coal	5,24	83,7	120,8	128,1	6,0	53,0
Metal ores	17,61	105,4	109,9	119,5	8,7	13,4
Iron ores and concentrates	9,06	95,3	121,5	127,0	4,5	33,3
Non-ferrous metal ores and concentrates	8,55	128,9	97,7	111,6	14,2	-13,4
Beverages	7,78	107,4	97,7	98,9	1,2	-7,9
Other transportable goods, except metal products, machinery and equipment	16,28	101,0	105,7	105,5	-0,2	4,5
Coke oven and refined petroleum products	3,49	106,6	106,4	110,9	4,2	4,0
Basic chemicals	5,86	96,2	114,9	114,8	-0,1	19,3
Other chemical products	4,36	102,0	100,9	97,4	-3,5	-4,5
Rubber and plastic products	1,33	105,8	85,2	82,2	-3,5	-22,3
Waste and scrap	1,24	98,2	98,4	99,5	1,1	1,3
Metal products, machinery and equipment	47,24	94,2	105,1	104,9	-0,2	11,4
Basic metals	28,79	90,9	113,0	112,0	-0,9	23,2
Basic iron and steel	3,68	97,8	110,6	118,2	6,9	20,9
Products of iron or steel	1,40	96,4	108,9	116,5	7,0	20,9
Basic precious metals and metals clad with precious metals	20,82	87,2	115,3	112,0	-2,9	28,4
Other semi-finished metal products	2,89	106,2	101,0	101,6	0,6	-4,3
Fabricated metal products	1,19	100,5	106,7	103,3	-3,2	2,8
General purpose machinery	3,65	108,9	86,8	90,0	3,7	-17,4
Special-purpose machinery	1,84	107,1	94,1	95,6	1,6	-10,7
Transport equipment: motor vehicles	10,28	96,8	94,9	95,9	1,1	-0,9
Other machinery and equipment	1,49	99,2	81,8	80,0	-2,2	-19,4

Figure 4.1 - Contributions to the monthly percentage change in exports

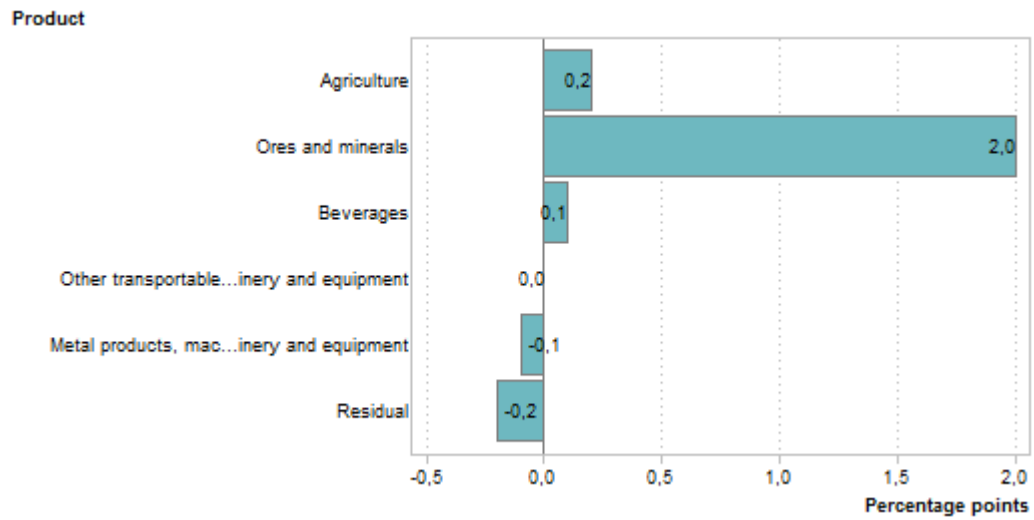


Figure 4.2 - Contributions to the annual percentage change in exports

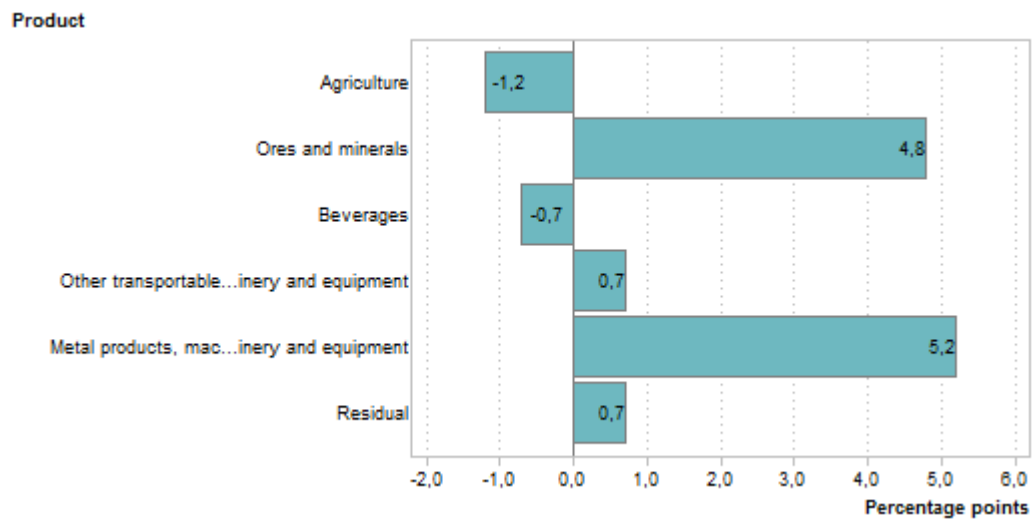


Table 2 - Imports

Product	Weight	Index (Dec 2020=100)			Percentage change	
		Jul 2020	Jun 2021	Jul 2021	Jul 2021 vs. Jun 2021	Jul 2021 vs. Jul 2020
All items	100,00	105,6	98,3	98,4	0,1	-6,8
Crude petroleum	10,08	109,8	133,6	143,8	7,6	31,0
Food products	8,32	99,1	102,7	97,2	-5,4	-1,9
Fats and oils	4,48	98,3	100,0	100,3	0,3	2,0
Grain mill products	3,84	100,0	105,9	93,6	-11,6	-6,4
Clothing and footwear	5,55	105,2	94,2	92,2	-2,1	-12,4
Clothing	3,75	106,9	91,5	91,3	-0,2	-14,6
Footwear	1,80	101,7	99,9	94,1	-5,8	-7,5
Other transportable goods, except metal products, machinery and equipment	31,37	105,2	100,6	101,5	0,9	-3,5
Paper and paperboard	1,95	102,8	93,8	93,2	-0,6	-9,3
Coke oven and refined petroleum products	6,92	103,1	112,0	113,6	1,4	10,2
Basic chemicals	7,36	102,7	105,4	105,8	0,4	3,0
Pharmaceutical and other chemical products	9,57	102,5	93,3	95,3	2,1	-7,0
Pharmaceutical products	6,12	100,0	89,1	89,0	-0,1	-11,0
Other chemical products	3,45	104,1	100,7	106,5	5,8	2,3
Rubber and plastic products	3,38	109,4	95,2	96,0	0,8	-12,2
Other transportable goods	2,19	123,3	94,8	91,3	-3,7	-26,0
Metal products, machinery and equipment	44,68	106,0	88,5	87,0	-1,7	-17,9
Basic metals	4,37	108,5	101,0	99,4	-1,6	-8,4
Fabricated metal products, except machinery and equipment	2,34	108,7	87,7	89,2	1,7	-17,9
General purpose machinery	6,01	101,0	90,3	79,8	-11,6	-21,0
Special purpose machinery	7,01	104,0	93,8	94,3	0,5	-9,3
Machinery for mining, quarrying and construction, and parts thereof	2,78	104,2	92,1	90,8	-1,4	-12,9
Agricultural or forestry machinery and parts thereof	1,00	136,0	100,0	100,0	0,0	-26,5
Other machinery and parts thereof	3,22	97,1	93,4	95,6	2,4	-1,5
Office, accounting and computing machinery	3,19	106,0	94,3	92,6	-1,8	-12,6
Electrical machinery and apparatus	4,58	111,5	85,9	84,3	-1,9	-24,4
Radio, television and communication equipment and apparatus	6,42	99,2	70,3	73,9	5,1	-25,5
Medical appliances, precision and optical instruments, watches and clocks	3,49	118,6	70,8	72,4	2,3	-39,0
Transport equipment	7,27	106,3	98,4	95,9	-2,5	-9,8
Vehicles	6,61	106,5	99,8	97,0	-2,8	-8,9
Bodies and parts of vehicles	0,66	101,9	84,5	85,3	0,9	-16,3

Figure 5.1 - Contributions to the monthly percentage change in imports

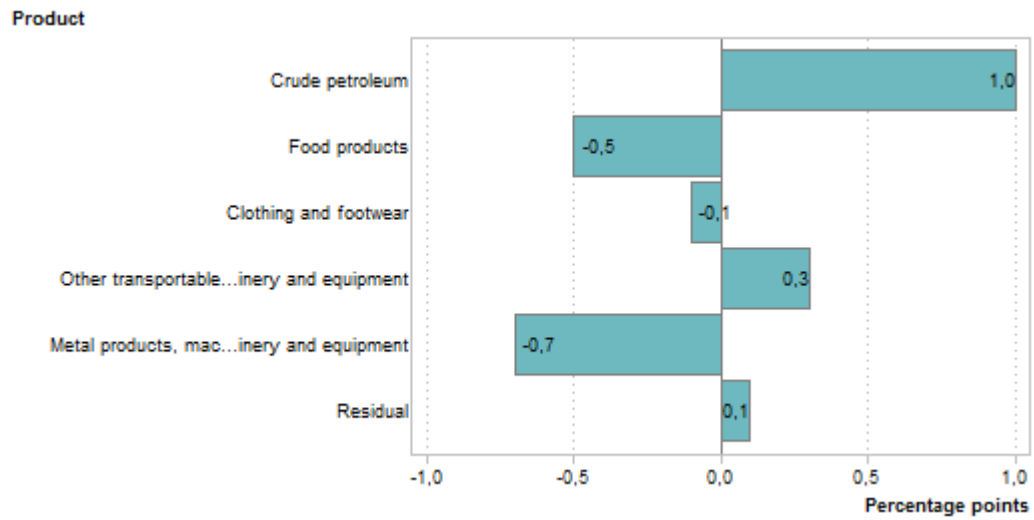
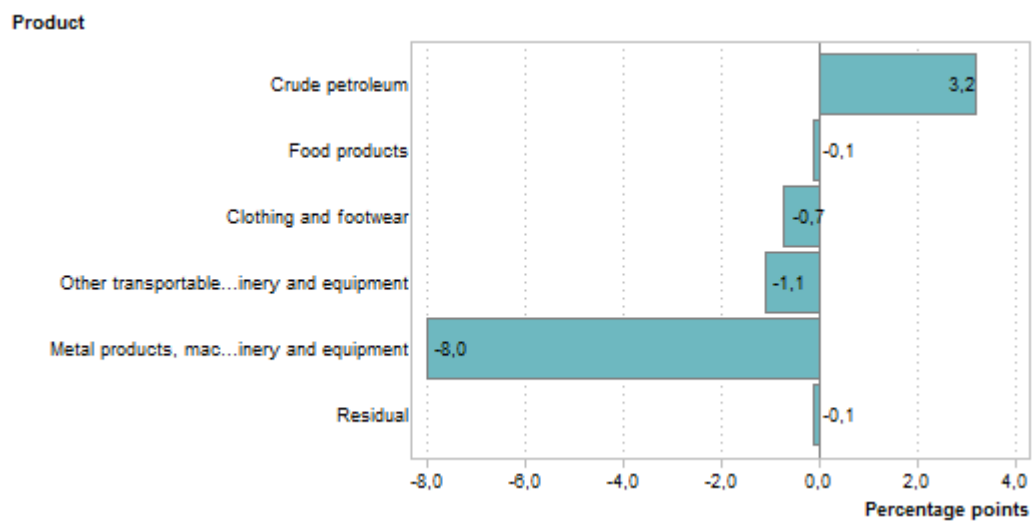


Figure 5.2 - Contributions to the annual percentage change in imports



EXPLANATORY NOTES

- Purpose and results** 1 The unit value index provides information on the trends in import and export unit values that are weighted with quantities of the current reference period. The calculation of unit value indices of commodities in exports and imports covers transactions reported by the South African Revenue Service. The results are used to compile export and import unit value indices, which are a measure of changes in export prices of locally produced commodities and changes in prices of imported commodities. Further information can be found in the XMUVI sources and methods document which can be accessed on this website: http://www.statssa.gov.za/?page_id=2528.
- Source** 2 South African Revenue Service (SARS).
- Gold** 3 The export unit value index for gold is calculated from net gold values and quantities obtained from the South African Reserve Bank (SARB) quarterly.
- The index changes quarterly and is published in this publication with a one quarter lag (e.g. the November 2013 gold value and quantity will only be included in the December 2013 publication).

GLOSSARY

- Chain linking** The construction of a continuous price series by multiplying together price indices that have been using different weights for different periods. The resulting index is referred to as a chained index (Practical Guide to producing Consumer Price Indices; 2009). Linking is intended to ensure that the individual indices on all levels show the correct development through time, but leads to non-additivity (IMF, 2005).
- Contributions** The contribution (percentage points) of a sub-index to the percentage change in the total index for a given period is calculated by multiplying the difference (i.e. change) in the sub index by its weight and then dividing by the previous period's total index. In the case of annual percentage changes, the contributions are approximations owing to annual changes in weights.
- Percentage change** The percentage change in an index for any given period is the change between that period's index value and the previous period's index value expressed as a percentage of the latter.

GENERAL INFORMATION

Stats SA publishes approximately 300 different statistical releases each year. It is not economically viable to produce them in more than one of South Africa's eleven official languages. Since the releases are used extensively, not only locally but also by international economic and social-scientific communities, Stats SA releases are published in English only.

Stats SA has copyright on this publication. Users may apply the information as they wish, provided that they acknowledge Stats SA as the source of the basic data wherever they process, apply, utilise, publish or distribute the data; and also that they specify that the relevant application and analysis (where applicable) result from their own processing of the data.

Advance release calendar

An advance release calendar is disseminated on www.statssa.gov.za

Forthcoming issues

Issue	Expected release date
August 2021	21 October 2021
September 2021	18 November 2021
October 2021	15 December 2021

Stats SA products

A complete set of Stats SA publications is available at the Stats SA Library and the following libraries:

National Library of South Africa, Pretoria Division
 National Library of South Africa, Cape Town Division
 Natal Society Library, Pietermaritzburg
 Library of Parliament, Cape Town
 Bloemfontein Public Library
 Johannesburg Public Library
 Eastern Cape Library Services, Qonce
 Central Regional Library, Polokwane
 Central Reference Library, Mbombela
 Central Reference Collection, Kimberley
 Central Reference Library, Mmabatho

Stats SA also provides a subscription service.

Electronic services

A large range of data are available via on-line services, diskette and computer printouts. For more details about our electronic data services, contact (012) 310 8600.

You can visit us on the internet at: www.statssa.gov.za

Enquiries

Technical enquiries	Evashnie Govender (012) 310 0167 Evashnieg@statssa.gov.za
User information services	Telephone number: (012) 310 8600 Email address: info@statssa.gov.za
Orders/subscription services	Telephone number: (012) 310 8619 Email address: millies@statssa.gov.za
Postal address	Private Bag X44, Pretoria, 0001

Produced by Stats SA