

STATISTICAL RELEASE
P0142.7

Export and Import Unit Value Indices

August 2018

Embargoed until:
25 October 2018
11:30

ENQUIRIES:
Richard Klaas
(012) 310 2185

FORTHCOMING ISSUE:
September 2018

EXPECTED RELEASE DATE
29 November 2018

www.statssa.gov.za
info@statssa.gov.za
T +27 12 310 8911
F +27 12 310 8500

Private Bag X44, Pretoria, 0001, South Africa
ISibalo House, Koch Street, Salvokop, Pretoria, 0002



CONTENTS

KEY FINDINGS	3
Exports	3
Imports.....	3
KEY FIGURES AND ANALYTICAL SERIES.....	4
Table A - Key figures	4
Table B - Analytical series	4
DETAILED RESULTS	5
Main index numbers and rates of change (%).....	5
Table C - Exports	5
Table D - Imports	5
Figure 1 - Export and import unit value indices.....	5
Figure 2 - Export UVI rates of change (%)	6
Figure 3 - Import UVI rates of change (%).....	6
Detailed index numbers and rates of change, and contributions	7
Table 1 - Exports.....	7
Figure 4.1 - Contributions to the monthly percentage change in exports	8
Figure 4.2 - Contributions to the annual percentage change in exports	8
Table 2 - Imports	9
Figure 5.1 - Contributions to the monthly percentage change in imports.....	10
Figure 5.2 - Contributions to the annual percentage change in imports	10
EXPLANATORY NOTES	11
GLOSSARY.....	11
TECHNICAL ENQUIRIES	11
GENERAL INFORMATION	12

KEY FINDINGS

Exports

The UVI for exported commodities shows an annual rate of change of 4,9% in August 2018. From July 2018 to August 2018 the UVI for exported commodities increased by 2,5%.

The main contributors to the annual rate of 4,9% were ores and metals (4,2 percentage points) and metal products, machinery and equipment (1,4 percentage points) (Figure 4.2).

The main contributors to the monthly increase of 2,5% were ores and minerals (1,3 percentage points) and metal products, machinery and equipment (0,8 of a percentage point) (see Figure 4.1).

Imports

The UVI for imported commodities shows an annual rate of change of -0,1% in August 2018. From July 2018 to August 2018 the UVI for imported commodities decreased by 1,2%.

The main contributors to the annual rate of -0,1% were metal products, machinery and equipment (-4,5 percentage points) and food products (-1,4 percentage points) (see Figure 5.2).

The main contributors to the monthly decrease of 1,2% were metal products, machinery and equipment (-0,6 of a percentage point), crude petroleum (-0,3 of a percentage point) and food products (-0,3 of a percentage point) (see Figure 5.1).

KEY FIGURES AND ANALYTICAL SERIES

Table A - Key figures

Product	Weight	Index (Dec 2016=100)			Percentage change	
		Aug 2017	Jul 2018	Aug 2018	Aug 2018 vs. Jul 2018	Aug 2018 vs. Aug 2017
Exports	100,00	93,1	95,3	97,7	2,5	4,9
Imports	100,00	95,1	96,2	95,0	-1,2	-0,1

Table B - Analytical series

Product	Weight	Index (Dec 2016=100)			Percentage change	
		Aug 2017	Jul 2018	Aug 2018	Aug 2018 vs. Jul 2018	Aug 2018 vs. Aug 2017
Exports excluding gold	93,98	93,4	95,7	98,3	2,7	5,2
Exports excluding ores and minerals	76,41	93,5	93,2	94,8	1,7	1,4
Exports excluding basic metals	75,56	92,3	94,1	96,3	2,3	4,3
Imports excluding crude petroleum	87,85	95,4	89,3	88,3	-1,1	-7,4

Risenga Maluleke
Statistician-General

DETAILED RESULTS

Main index numbers and rates of change (%)

Table C - Exports

Base: Dec 2016=100

Year and type	Jan	Feb	Mar	Apr	May	Jun	Jul	Aug	Sep	Oct	Nov	Dec	Average	
2016	Index	96,8	95,9	96,2	95,3	97,6	97,9	95,9	94,2	96,5	96,1	98,8	100,0	96,8
	Rate m/m	2,3	-0,9	0,3	-0,9	2,4	0,3	-2,0	-1,8	2,4	-0,4	2,8	1,2	..
	Rate y/y	0,5	-0,4	2,4	3,6	6,7	6,4	3,1	0,3	1,2	0,2	2,6	5,7	2,7
2017	Index	101,7	98,1	97,1	99,2	96,4	93,9	92,2	93,1	93,7	96,5	97,4	94,1	96,1
	Rate m/m	1,7	-3,5	-1,0	2,2	-2,8	-2,6	-1,8	1,0	0,6	3,0	0,9	-3,4	..
	Rate y/y	5,1	2,3	0,9	4,1	-1,2	-4,1	-3,9	-1,2	-2,9	0,4	-1,4	-5,9	-0,7
2018	Index	90,5	90,5	90,9	90,8	91,8	93,7	95,3	97,7
	Rate m/m	-3,8	0,0	0,4	-0,1	1,1	2,1	1,7	2,5
	Rate y/y	-11,0	-7,7	-6,4	-8,5	-4,8	-0,2	3,4	4,9

Table D - Imports

Base: Dec 2016=100

Year and type	Jan	Feb	Mar	Apr	May	Jun	Jul	Aug	Sep	Oct	Nov	Dec	Average	
2016	Index	110,6	110,7	107,6	106,8	104,7	108,3	106,7	103,2	102,1	101,8	101,0	100,0	105,3
	Rate m/m	0,7	0,1	-2,8	-0,7	-2,0	3,4	-1,5	-3,3	-1,1	-0,3	-0,8	-1,0	..
	Rate y/y	-0,3	1,7	0,7	0,6	-1,0	2,1	-0,3	-4,1	-5,3	-6,4	-7,4	-8,9	-2,4
2017	Index	100,4	100,7	98,8	98,7	99,1	96,0	95,1	95,1	95,0	95,0	98,4	98,6	97,6
	Rate m/m	0,4	0,3	-1,9	-0,1	0,4	-3,1	-0,9	0,0	-0,1	0,0	3,6	0,2	..
	Rate y/y	-9,2	-9,0	-8,2	-7,6	-5,3	-11,4	-10,9	-7,8	-7,0	-6,7	-2,6	-1,4	-7,3
2018	Index	95,7	92,7	90,5	89,4	92,5	94,6	96,2	95,0
	Rate m/m	-2,9	-3,1	-2,4	-1,2	3,5	2,3	1,7	-1,2
	Rate y/y	-4,7	-7,9	-8,4	-9,4	-6,7	-1,5	1,2	-0,1

Figure 1 - Export and import unit value indices

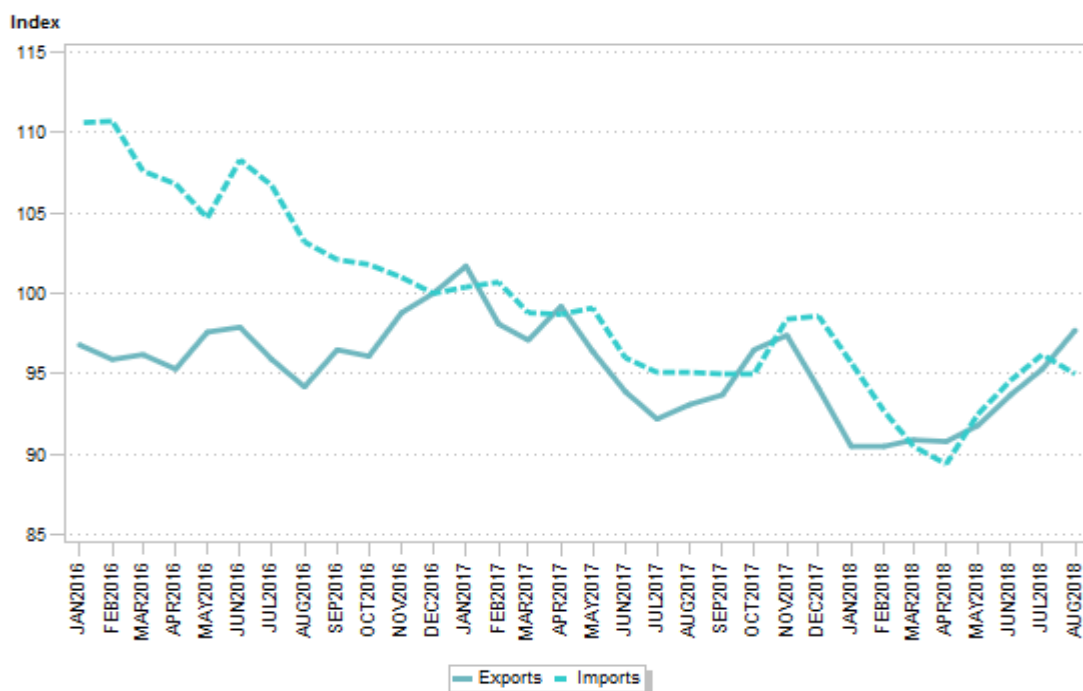


Figure 2 - Export UVI rates of change (%)

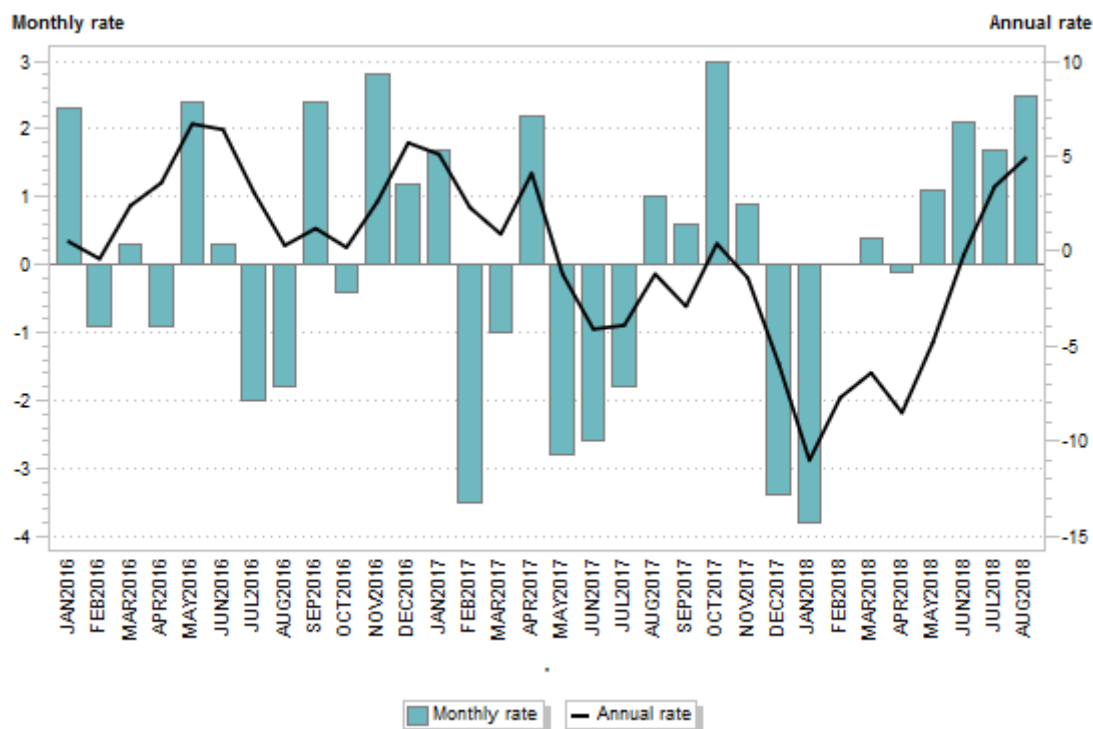
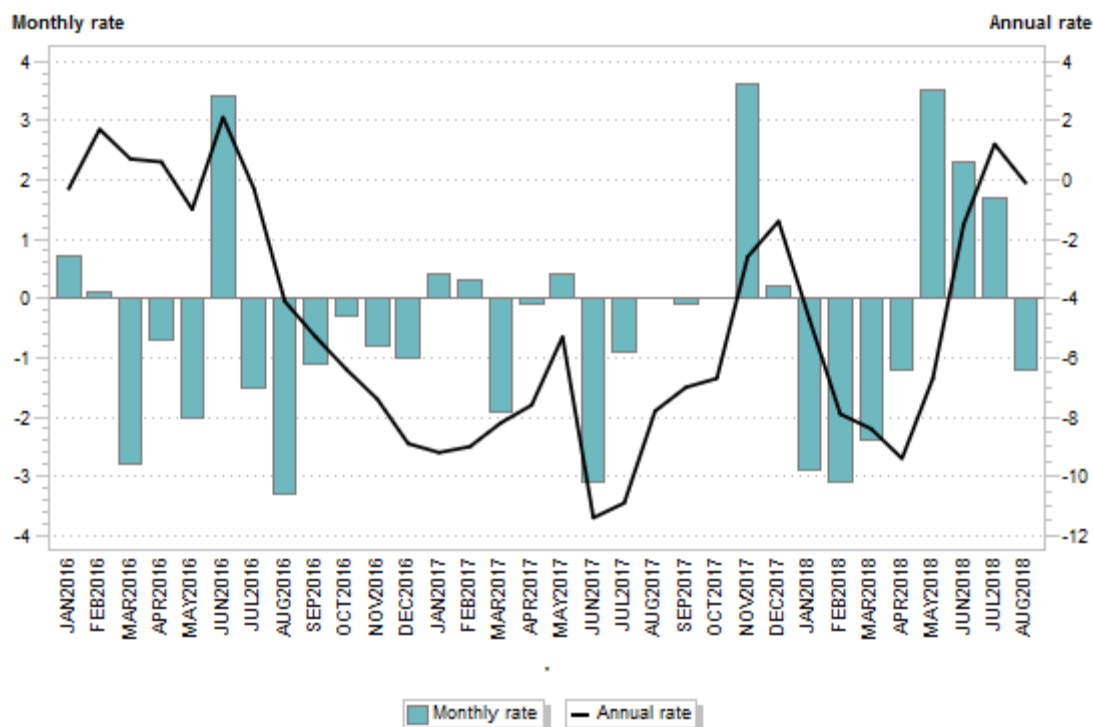


Figure 3 - Import UVI rates of change (%)



Detailed index numbers and rates of change, and contributions

Table 1 - Exports

Product	Weight	Index (Dec 2016=100)			Percentage change	
		Aug 2017	Jul 2018	Aug 2018	Aug 2018 vs. Jul 2018	Aug 2018 vs. Aug 2017
All items	100,00	93,1	95,3	97,7	2,5	4,9
Agriculture	5,74	86,7	73,9	75,6	2,3	-12,8
Ores and minerals	23,59	91,2	102,5	107,8	5,2	18,2
Coal	8,02	91,7	110,2	117,6	6,7	28,2
Metal ores	15,57	90,9	98,6	102,7	4,2	13,0
Iron ores and concentrates	6,72	101,0	101,9	107,3	5,3	6,2
Non-ferrous metal ores and concentrates	8,85	81,6	95,0	98,1	3,3	20,2
Beverages	7,50	92,4	90,1	91,7	1,8	-0,8
Other transportable goods, except metal products, machinery and equipment	17,80	93,3	94,3	95,4	1,2	2,3
Coke oven and refined petroleum products	4,59	98,6	100,9	102,9	2,0	4,4
Basic chemicals	6,08	100,5	103,4	106,1	2,6	5,6
Other chemical products	3,78	64,8	58,4	58,3	-0,2	-10,0
Rubber and plastic products	1,56	95,2	84,1	85,2	1,3	-10,5
Waste and scrap	1,79	115,1	132,3	128,3	-3,0	11,5
Metal products, machinery and equipment	45,37	94,6	95,7	97,4	1,8	3,0
Basic metals	24,44	95,7	99,3	102,3	3,0	6,9
Basic iron and steel	5,01	91,3	100,0	106,5	6,5	16,6
Products of iron or steel	2,46	113,6	120,1	125,9	4,8	10,8
Basic precious metals and metals clad with precious metals	13,94	91,8	91,8	92,3	0,5	0,5
Other semi-finished metal products	3,03	107,1	116,4	122,5	5,2	14,4
Fabricated metal products	1,45	85,4	69,2	69,9	1,0	-18,1
General purpose machinery	3,76	81,7	82,8	84,7	2,3	3,7
Special-purpose machinery	2,18	76,3	63,9	62,7	-1,9	-17,8
Transport equipment: motor vehicles	11,78	104,0	107,4	108,0	0,6	3,8
Other machinery and equipment	1,76	85,2	81,0	79,1	-2,3	-7,2

Figure 4.1 - Contributions to the monthly percentage change in exports

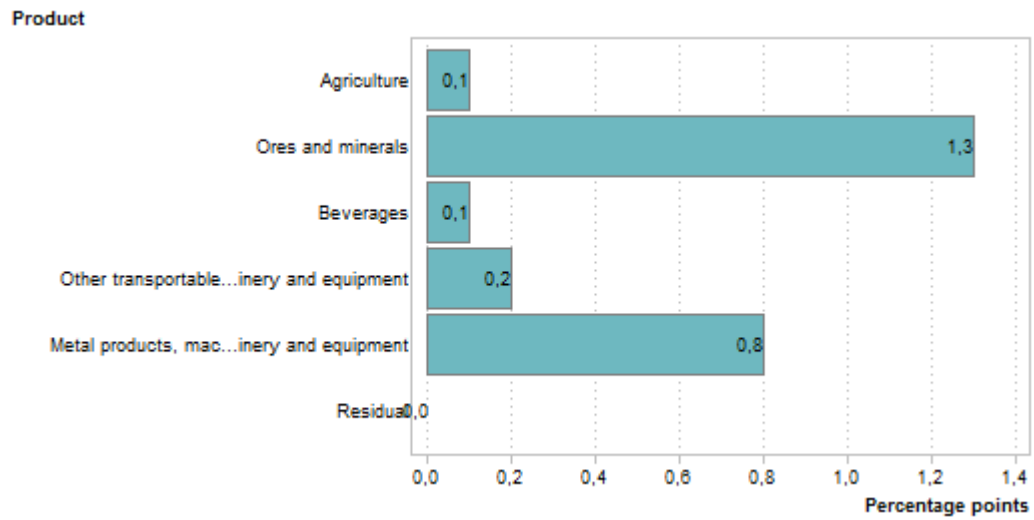


Figure 4.2 - Contributions to the annual percentage change in exports

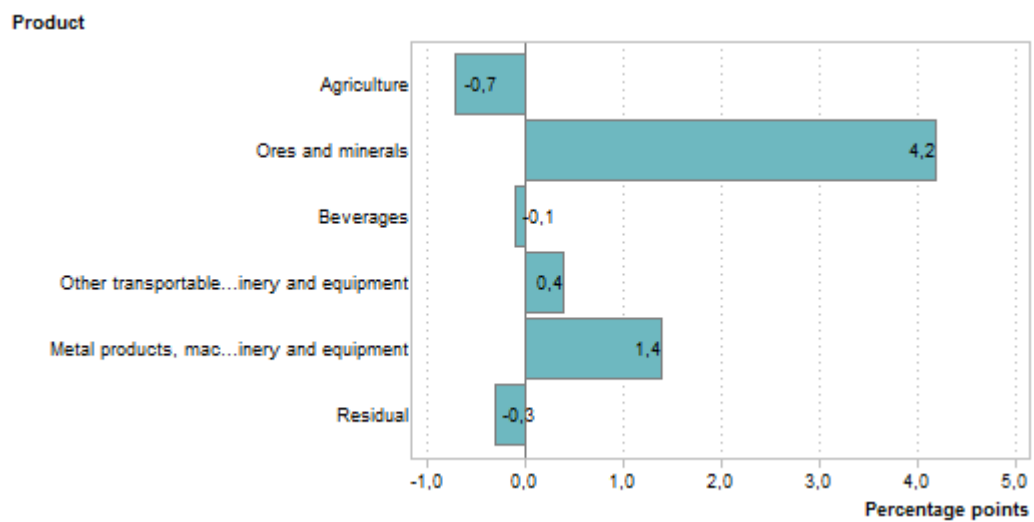


Table 2 - Imports

Product		Weight	Index (Dec 2016=100)			Percentage change	
			Aug 2017	Jul 2018	Aug 2018	Aug 2018 vs. Jul 2018	Aug 2018 vs. Aug 2017
All items		100,00	95,1	96,2	95,0	-1,2	-0,1
Crude petroleum		12,15	93,0	147,6	145,3	-1,6	56,2
Food products		7,43	106,8	92,8	89,3	-3,8	-16,4
Fats and oils		4,32	100,0	93,7	91,7	-2,1	-8,3
Grain mill products		3,11	116,9	91,7	85,9	-6,3	-26,5
Clothing and footwear		5,30	95,0	97,2	95,5	-1,7	0,5
Clothing		3,31	95,2	94,3	92,9	-1,5	-2,4
Footwear		1,99	94,8	102,1	99,8	-2,3	5,3
Other transportable goods, except metal products, machinery and equipment		27,64	93,7	90,9	91,1	0,2	-2,8
Paper and paperboard		1,95	96,0	101,7	103,1	1,4	7,4
Coke oven and refined petroleum products		6,05	87,1	94,0	92,3	-1,8	6,0
Basic chemicals		6,26	98,7	96,9	98,5	1,7	-0,2
Pharmaceutical and other chemical products		7,81	93,4	79,7	80,3	0,8	-14,0
Pharmaceutical products		4,96	93,7	76,1	77,6	2,0	-17,2
Other chemical products		2,85	92,8	85,8	84,7	-1,3	-8,7
Rubber and plastic products		3,32	93,0	91,2	89,0	-2,4	-4,3
Other transportable goods		2,25	94,0	91,1	92,7	1,8	-1,4
Metal products, machinery and equipment		47,48	94,7	87,0	85,7	-1,5	-9,5
Basic metals		4,43	108,9	143,6	138,0	-3,9	26,7
Fabricated metal products, except machinery and equipment		2,12	91,6	92,3	91,9	-0,4	0,3
General purpose machinery		6,40	87,3	75,5	70,7	-6,4	-19,0
Special purpose machinery		6,78	87,4	71,5	70,7	-1,1	-19,1
Machinery for mining, quarrying and construction, and parts thereof		2,60	83,2	55,3	56,7	2,5	-31,9
Agricultural or forestry machinery and parts thereof		0,89	86,9	85,3	75,4	-11,6	-13,2
Other machinery and parts thereof		3,29	90,2	78,7	78,8	0,1	-12,6
Office, accounting and computing machinery		2,98	90,3	78,9	81,4	3,2	-9,9
Electrical machinery and apparatus		4,52	90,3	81,0	78,5	-3,1	-13,1
Radio, television and communication equipment and apparatus		6,20	91,4	64,7	66,1	2,2	-27,7
Medical appliances, precision and optical instruments, watches and clocks		3,31	81,9	64,0	65,6	2,5	-19,9
Transport equipment		10,74	108,7	107,1	106,0	-1,0	-2,5
Vehicles		9,99	109,0	107,1	105,9	-1,1	-2,8
Bodies and parts of vehicles		0,75	105,3	107,0	106,2	-0,7	0,9

Figure 5.1 - Contributions to the monthly percentage change in imports

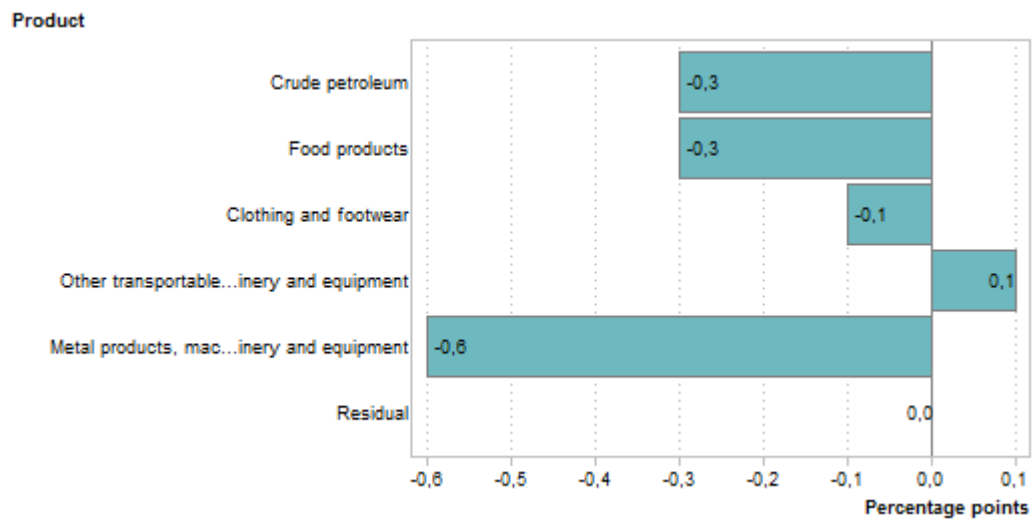
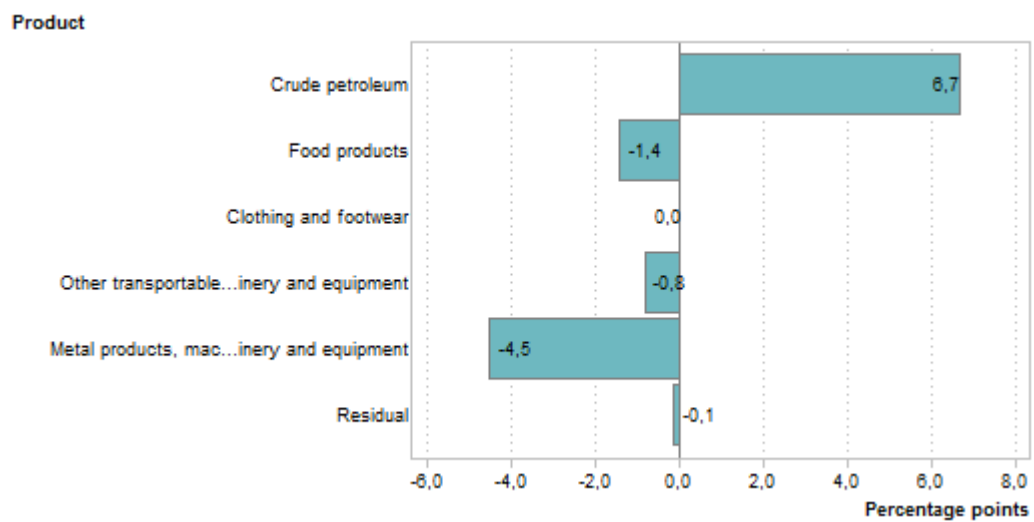


Figure 5.2 - Contributions to the annual percentage change in imports



EXPLANATORY NOTES

- Purpose and results** 1 The unit value index provides information on the trends in import and export unit values that are weighted with quantities of the current reference period. The calculation of unit value indices of commodities in exports and imports covers transactions reported by the South African Revenue Service. The results are used to compile export and import unit value indices, which are a measure of changes in export prices of locally produced commodities and changes in prices of imported commodities. Further information can be found in the XMUVI sources and methods document which can be accessed on this website: http://www.statssa.gov.za/?page_id=2528.
- Source** 2 South African Revenue Service (SARS).
- Gold** 3 The export unit value index for gold is calculated from net gold values and quantities obtained from the South African Reserve Bank (SARB) quarterly.
- The index changes quarterly and is published in this publication with a one quarter lag (e.g. the September 2013 gold value and quantity will only be included in the December 2013 publication).

GLOSSARY

- Chain linking** The construction of a continuous price series by multiplying together price indices that have been using different weights for different periods. The resulting index is referred to as a chained index (Practical Guide to producing Consumer Price Indices; 2009). Linking is intended to ensure that the individual indices on all levels show the correct development through time, but leads to non-additivity (IMF, 2005).
- Contributions** The contribution (percentage points) of a sub-index to the percentage change in the total index for a given period is calculated by multiplying the difference (i.e. change) in the sub index by its weight and then dividing by the previous period's total index. In the case of annual percentage changes, the contributions are approximations owing to annual changes in weights.
- Percentage change** The percentage change in an index for any given period is the change between that period's index value and the previous period's index value expressed as a percentage of the latter.

TECHNICAL ENQUIRIES

- Richard Klaas** Telephone number: (012) 310 2185
Email: RichardK@statssa.gov.za
- Marietjie Bennett** Telephone number: (012) 310 8077
Email: MarietjieB@statssa.gov.za

GENERAL INFORMATION

Stats SA publishes approximately 300 different statistical releases each year. It is not economically viable to produce them in more than one of South Africa's eleven official languages. Since the releases are used extensively, not only locally but also by international economic and social-scientific communities, Stats SA releases are published in English only.

Stats SA has copyright on this publication. Users may apply the information as they wish, provided that they acknowledge Stats SA as the source of the basic data wherever they process, apply, utilise, publish or distribute the data; and also that they specify that the relevant application and analysis (where applicable) result from their own processing of the data.

Advance release calendar

An advance release calendar is disseminated on www.statssa.gov.za

Forthcoming issues

Issue	Expected release date
September 2018	29 November 2018
October 2018	13 December 2018
November 2018	31 January 2019

Stats SA products

A complete set of Stats SA publications is available at the Stats SA Library and the following libraries:

National Library of South Africa, Pretoria Division
 National Library of South Africa, Cape Town Division
 Natal Society Library, Pietermaritzburg
 Library of Parliament, Cape Town
 Bloemfontein Public Library
 Johannesburg Public Library
 Eastern Cape Library Services, King William's Town
 Central Regional Library, Polokwane
 Central Reference Library, Nelspruit
 Central Reference Collection, Kimberley
 Central Reference Library, Mmabatho

Stats SA also provides a subscription service.

Electronic services

A large range of data are available via on-line services, diskette and computer printouts. For more details about our electronic data services, contact (012) 310 8600.

You can visit us on the internet at: www.statssa.gov.za

Enquiries

User information services	Telephone number: (012) 310 8600 Email address: info@statssa.gov.za
Orders/subscription services	Telephone number: (012) 310 8044 Email address: magdaj@statssa.gov.za
Postal address	Private Bag X44, Pretoria, 0001

Produced by Stats SA