



your leading partner in quality statistics

Statistical release

P0141

Consumer Price Index

December 2012

**Embargoed until:
23 January 2013
10:00**

Please note that Stats SA will introduce the new 2012 basket and weights for the Consumer Price Index in the January 2013 publication.

Enquiries:

User information services
Tel: (012) 310 8600 / 4892/ 8390

Forthcoming issue:

January 2013

Expected release date

20 February 2013

KEY FINDINGS

The headline CPI (for all urban areas) annual inflation rate in December 2012 was 5,7%. This rate was 0,1 of a percentage point higher than the corresponding annual rate of 5,6% in November 2012. On average, prices increased by 0,2% between November 2012 and December 2012.

The food and non-alcoholic beverages index increased by 0,2% between November 2012 and December 2012. The annual rate decreased to 6,9% in December 2012 from 7,0% in November 2012. The following components in the food and non-alcoholic beverages index increased: fruit (4,9%), milk, eggs and cheese (0,8%), hot beverages (0,8%), cold beverages (0,8%), oils and fats (0,7%), meat (0,4%) and bread and cereals (0,2%). The following components decreased: vegetables (-2,4%), fish (-0,6%), other food (-0,3%) and sugar, sweets and desserts (-0,2%).

The housing and utilities increased by 0,5% between November 2012 and December 2012, mainly due to a 0,8% increase in actual rentals for housing and a 0,7% increase in owners' equivalent rent. The annual rate was unchanged at 6,0% in December 2012.

The transport index increased by 0,3% between November 2012 and December 2012, mainly due to a 26,6% increase in long distance bus fares. The annual rate was unchanged at 5,5% in December 2012.

The provinces with an annual inflation rate lower than or equal to headline inflation were Free State (5,7%), Western Cape (5,6%), KwaZulu-Natal (5,6%), Gauteng (5,5%) and Eastern Cape (5,3%). The provinces with an annual inflation rate higher than headline inflation were Northern Cape (6,5%), North West (6,4%), Mpumalanga (6,2%) and Limpopo (6,2%).

KEY FINDINGS FOR THE YEAR 2012

The official average annual inflation rate was 5,6% for the year 2012.

The official average annual inflation rate was 5,6% for the year 2012 (i.e. the average CPI for all urban areas for the year 2012 compared with that for the year 2011). This average annual inflation rate of 5,6% was 0,6 of a percentage point higher than the corresponding average annual inflation rate of 5,0% for the year 2011.

NOTES

CPI for January 2013

No surveys in addition to the published surveys will be conducted in January 2013.

Publication dates for future releases

Year	Issue	Publication date
2013	January	20 February 2013
	February	20 March 2013
	March	17 April 2013
	April	22 May 2013
	May	19 June 2013
	June	24 July 2013
	July	21 August 2013
	August	18 September 2013
	September	23 October 2013
	October	20 November 2013
	November	11 December 2013
	December	22 January 2014

P J Lehohla
Statistician-General

TABLES

Table A - Consumer Price Index: Indices and percentage changes

CPI Headline	Index description	Weight	Index (2008=100)			Percentage change			
			Dec 2011	Nov 2012	Dec 2012	Month-on-month	Year-on-year		
		100,00	119,9	126,4	126,7	+0,2	+5,7		
Analytical series	CPI per expenditure quintile	1	1,78	123,1	131,2	131,9	+0,5	+7,1	
		2	3,88	123,0	130,9	131,5	+0,5	+6,9	
		3	7,17	122,5	130,2	130,7	+0,4	+6,7	
		4	15,61	122,0	129,3	129,8	+0,4	+6,4	
		5	71,56	119,0	125,0	125,2	+0,2	+5,2	
		CPI for all goods	54,20	117,7	123,9	123,8	-0,1	+5,2	
		CPI for durable goods	14,79	97,8	97,7	97,6	-0,1	-0,2	
		CPI for semi-durable goods	6,73	107,8	110,5	110,3	-0,2	+2,3	
		CPI for non-durable goods	32,68	128,7	138,5	138,5	0,0	+7,6	
		CPI for services	45,80	122,6	129,3	130,0	+0,5	+6,0	
		CPI for pensioners	..	122,2	129,0	129,4	+0,3	+5,9	
		CPI for administered prices	Total	14,66	131,2	142,9	142,7	-0,1	+8,8
			Regulated	9,62	131,4	143,7	143,3	-0,3	+9,1
			Not regulated	5,04	130,8	141,5	141,5	0,0	+8,2
		CPI for food and non-alcoholic beverages (NAB)	15,68	124,2	132,5	132,8	+0,2	+6,9	
		CPI excluding food and NAB	84,32	119,1	125,2	125,5	+0,2	+5,4	
		CPI excluding petrol	96,07	120,0	126,1	126,4	+0,2	+5,3	
		CPI excluding food and NAB and petrol	80,39	119,2	124,8	125,2	+0,3	+5,0	
		CPI excluding food and NAB, petrol, VAT, assessment rates, and finance charges	77,05	118,8	124,3	124,7	+0,3	+5,0	
		CPI excluding housing	77,44	118,0	124,3	124,5	+0,2	+5,5	
		CPI excluding petrol and energy	94,39	118,5	124,3	124,6	+0,2	+5,1	
		CPI excluding energy	98,32	118,5	124,7	125,0	+0,2	+5,5	
		CPI excluding food and NAB, petrol and energy	78,71	117,3	122,6	123,0	+0,3	+4,9	
	CPI excluding owners' equivalent rent	87,79	120,4	127,2	127,4	+0,2	+5,8		
	CPI excluding administered prices	85,34	118,0	123,5	123,9	+0,3	+5,0		
	CPI administered prices excluding petrol and paraffin	10,57	136,2	146,5	146,5	0,0	+7,6		
Geographic indices	CPI for primary urban areas	62,76	119,6	125,9	126,2	+0,2	+5,5		
	CPI for secondary urban areas	20,33	121,0	127,7	128,0	+0,2	+5,8		
	CPI for rural areas [1]	16,91	120,6	127,4	127,8	+0,3	+6,0		
	CPI for total country	100,00	120,0	126,5	126,9	+0,3	+5,8		
	CPI per province	Western Cape	18,33	120,0	126,3	126,7	+0,3	+5,6	
		Eastern Cape	9,91	122,1	128,5	128,6	+0,1	+5,3	
		Northern Cape	1,66	120,6	128,2	128,4	+0,2	+6,5	
		Free State	6,45	121,5	127,7	128,4	+0,5	+5,7	
		KwaZulu-Natal	14,08	119,5	125,8	126,2	+0,3	+5,6	
		North West	5,79	119,7	127,3	127,4	+0,1	+6,4	
		Gauteng	32,77	119,4	125,8	126,0	+0,2	+5,5	
Mpumalanga		5,47	121,1	128,1	128,6	+0,4	+6,2		
Limpopo	5,54	119,2	126,0	126,6	+0,5	+6,2			

[1] The CPI for rural areas uses weights for rural areas but prices from secondary areas.

Note: Unless otherwise stated all tables refer to all urban areas.

Table B - Consumer Price Index: Index numbers and year-on-year rates

Base year: 2008=100

	Jan	Feb	Mar	Apr	May	Jun	Jul	Aug	Sep	Oct	Nov	Dec	Average [1]
Year													
2010													
Index	109,5	110,2	111,1	111,3	111,5	111,5	112,2	112,3	112,4	112,6	112,8	113,0	111,7
Rate	6,2	5,7	5,1	4,8	4,6	4,2	3,7	3,5	3,2	3,4	3,6	3,5	4,3
2011													
Index	113,5	114,3	115,7	116,0	116,6	117,1	118,1	118,3	118,8	119,4	119,7	119,9	117,3
Rate	3,7	3,7	4,1	4,2	4,6	5,0	5,3	5,3	5,7	6,0	6,1	6,1	5,0
2012													
Index	120,6	121,3	122,6	123,1	123,2	123,5	123,9	124,2	125,3	126,1	126,4	126,7	123,9
Rate	6,3	6,1	6,0	6,1	5,7	5,5	4,9	5,0	5,5	5,6	5,6	5,7	5,6

[1] Annual average.

CPI headline: Index numbers and inflation rate

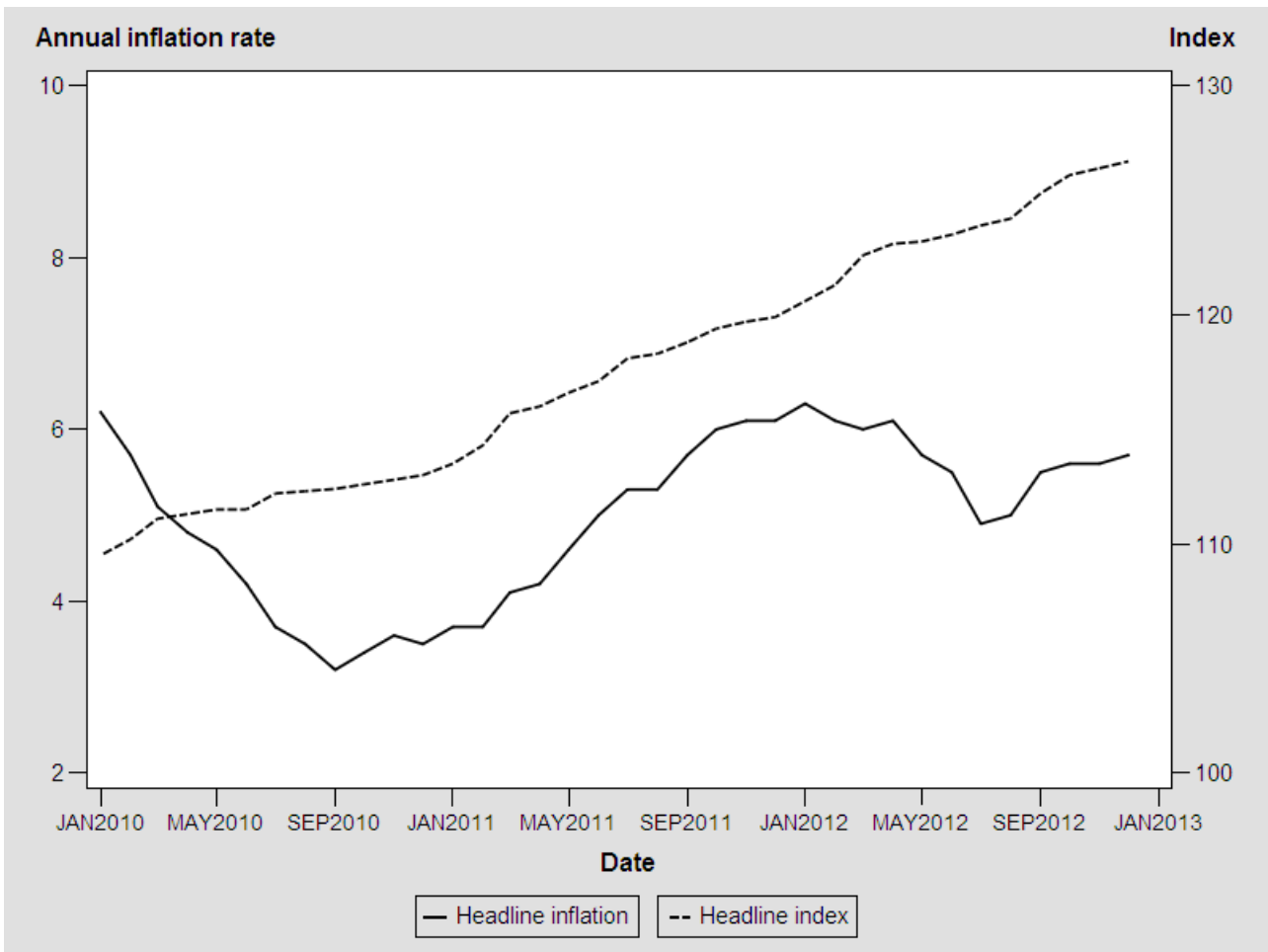


Table C - Contribution of different groups to the annual percentage change in the CPI

Product group	Contribution	
	Nov 2012	Dec 2012
Food and non-alcoholic beverages	+1,1	+1,1
Alcoholic beverages and tobacco	+0,4	+0,4
Clothing and footwear	+0,1	+0,1
Housing and utilities	+1,4	+1,4
Household contents and services	+0,2	+0,2
Health	+0,1	+0,1
Transport	+0,9	+1,0
Recreation and culture	+0,1	+0,1
Education	+0,2	+0,2
Restaurants and hotels	+0,2	+0,2
Miscellaneous goods and services	+0,8	+0,8
Residual	+0,1	+0,1
All Items	+5,6	+5,7

Table D - Contribution of different groups to the monthly percentage change in the CPI

Product group	Contribution	
	Nov 2012	Dec 2012
Food and non-alcoholic beverages	+0,2	0,0
Housing and utilities	0,0	+0,1
Residual	0,0	+0,1
All Items	+0,2	+0,2

Table E - Consumer Price Index: Group and product indices and percentage changes

Index description	Weight	Index (2008=100)			Percentage change	
		Dec 2011	Nov 2012	Dec 2012	Month-on-month	Year-on-year
All Items	100,00	119,9	126,4	126,7	+0,2	+5,7
Food and non-alcoholic beverages	15,68	124,2	132,5	132,8	+0,2	+6,9
Food	14,27	123,8	132,4	132,5	+0,1	+7,0
Processed	6,79	124,0	133,3	133,3	0,0	+7,5
Unprocessed	7,48	123,6	131,5	131,8	+0,2	+6,6
Bread and cereals	3,08	118,8	127,2	127,5	+0,2	+7,3
Meat	4,59	128,3	133,8	134,4	+0,4	+4,8
Fish	0,66	121,5	132,4	131,6	-0,6	+8,3
Milk, eggs and cheese	1,79	115,5	125,6	126,6	+0,8	+9,6
Oils and fats	0,53	115,7	121,1	121,9	+0,7	+5,4
Fruit	0,47	130,3	131,8	138,2	+4,9	+6,1
Vegetables	1,63	124,6	139,7	136,3	-2,4	+9,4
Sugar, sweets and desserts	0,77	135,3	145,4	145,1	-0,2	+7,2
Other food	0,75	126,5	139,9	139,5	-0,3	+10,3
Non-alcoholic beverages	1,41	128,9	134,2	135,2	+0,7	+4,9
Hot beverages	0,34	136,9	141,3	142,4	+0,8	+4,0
Cold beverages	1,07	126,5	132,0	133,0	+0,8	+5,1
Alcoholic beverages and tobacco	5,58	130,9	140,2	139,9	-0,2	+6,9
Alcoholic beverages	3,29	124,7	135,9	135,6	-0,2	+8,7
Spirits	0,94	122,7	134,0	133,6	-0,3	+8,9
Wine	0,72	120,3	128,6	127,1	-1,2	+5,7
Beer	1,63	127,9	140,3	140,5	+0,1	+9,9
Tobacco	2,29	139,6	146,2	146,2	0,0	+4,7
Clothing and footwear	4,11	111,3	114,7	114,9	+0,2	+3,2
Clothing	2,90	112,7	116,2	116,4	+0,2	+3,3
Footwear	1,21	107,9	111,1	111,2	+0,1	+3,1
Housing and utilities	22,56	126,4	133,3	134,0	+0,5	+6,0
Actual rentals for housing	3,49	119,8	124,6	125,6	+0,8	+4,8
Owners' equivalent rent	12,21	116,3	120,3	121,2	+0,7	+4,2
Maintenance and repair	1,68	122,1	129,6	130,7	+0,8	+7,0
Water and other services	3,31	133,5	145,7	145,7	0,0	+9,1
Electricity and other fuels	1,87	196,0	215,8	216,2	+0,2	+10,3
Household contents and services	5,86	108,8	112,0	112,4	+0,4	+3,3
Furnishings, floor coverings and textiles	2,17	91,7	91,3	91,4	+0,1	-0,3
Appliances, tableware and equipment	1,05	107,3	111,4	110,8	-0,5	+3,3
Supplies and services	2,64	123,6	129,3	130,2	+0,7	+5,3
Domestic workers' wages	1,99	122,9	128,5	129,8	+1,0	+5,6
Health	1,47	127,0	133,8	133,9	+0,1	+5,4
Medical products	0,57	125,6	130,2	130,4	+0,2	+3,8
Medical services	0,90	127,9	136,1	136,1	0,0	+6,4
Transport	18,80	110,0	115,8	116,1	+0,3	+5,5
Purchase of vehicles	11,25	102,0	102,1	102,0	-0,1	0,0
Private transport operation	4,82	120,5	134,4	133,5	-0,7	+10,8
Petrol	3,93	118,3	134,0	133,0	-0,7	+12,4
Other running costs	0,89	130,2	135,8	135,6	-0,1	+4,1
Public transport	2,73	124,2	139,8	143,4	+2,6	+15,5
Communication	3,22	96,7	96,8	96,7	-0,1	0,0
Postal services and telecommunication services	2,90	102,7	103,1	103,1	0,0	+0,4
Telecommunication equipment	0,32	42,8	40,5	40,1	-1,0	-6,3
Recreation and culture	4,19	110,6	113,9	113,6	-0,3	+2,7
Recreational equipment	2,23	93,4	94,6	94,7	+0,1	+1,4
Recreational and cultural services	1,25	132,3	137,1	137,1	0,0	+3,6
Books, newspapers and stationery	0,71	125,8	133,3	131,4	-1,4	+4,5
Education	2,19	132,5	144,4	144,4	0,0	+9,0
Primary and secondary education	1,28	135,4	146,9	146,9	0,0	+8,5
Tertiary	0,90	128,3	140,8	140,8	0,0	+9,7

Table E - Consumer Price Index: Group and product indices and percentage changes (concluded)

Index description		Weight	Index (2008=100)			Percentage change	
			Dec 2011	Nov 2012	Dec 2012	Month-on-month	Year-on-year
Restaurants and hotels		2,78	127,3	135,0	135,8	+0,6	+6,7
	Restaurants	1,85	128,4	136,4	137,5	+0,8	+7,1
	Hotels	0,93	125,1	132,0	132,5	+0,4	+5,9
Miscellaneous goods and services		13,56	125,0	131,8	132,0	+0,2	+5,6
	Personal care	2,20	117,3	121,6	122,1	+0,4	+4,1
	Insurance	7,71	126,4	134,2	134,6	+0,3	+6,5
	Financial services	1,27	125,7	134,7	134,7	0,0	+7,2
	Other services	2,38	127,1	131,5	131,5	0,0	+3,5

GLOSSARY

A complete set of definitions is available in the methods and sources document on the Stats SA website
<http://www.statssa.gov.za>

Annual inflation rate	The annual inflation rate is the change in the CPI for all items of the relevant month of the current year compared with the CPI for all items of the same month in the previous year expressed as a percentage.
Annual percentage change	The annual percentage change is the change in the index of the relevant month of the current year compared with the index of the same month in the previous year expressed as a percentage.
Average annual inflation rate	The average annual inflation rate is the change in the average CPI for all items of one year compared with the average CPI for all items of the previous year expressed as a percentage.
Average annual percentage change	The average annual percentage change is the change in the average index of one year compared with the average index of the previous year expressed as a percentage.
CPI for administered prices	An administered price is defined as the price of a product which is set consciously by an individual producer or group of producers and/or any price which can be determined or influenced by government, either directly or through a government agency/institution without reference to market forces. Products and services included are assessment rates, sanitary fees, refuse removal, water, electricity, paraffin, petrol, public transport – trains, motor licences, motor registration, telephone fees, postage, cell calls, television licence, school fees, university/technicons/colleges and university boarding fees.
CPI for regulated prices	Regulated prices are those administered prices that are monitored and controlled by government policy. To this end, price regulation does not necessarily imply the presence of an economic regulator, but the restriction on the extent to which prices may vary, depending on government's policy objective. Products and services included are water, electricity, paraffin, petrol, telephone fees, postage and cell calls.
Inflation rate	The inflation rate is the change in the CPI for all items of the relevant month of the current year compared with the CPI for all items of the same month in the previous year expressed as a percentage.
Monthly percentage change	The monthly percentage change is the change in the CPI of the relevant month compared with the CPI of the previous month expressed as a percentage.
CPI per expenditure quintile	quintile 1 - up to R 14 564; quintile 2 - R 14 565 up to R 23 278; quintile 3 - R 23 279 up to R 36 755; quintile 4 - R 36 756 up to R 79 152; and quintile 5 - R 79 153 and more.

FOR MORE INFORMATION

Stats SA publishes approximately 300 different releases each year. It is not economically viable to produce them in more than one of South Africa's eleven official languages. Since the releases are used extensively, not only locally but also by international economic and social-scientific communities, Stats SA releases are published in English only.

Stats SA has copyright on this publication. Users may apply the information as they wish, provided that they acknowledge Stats SA as the source of the basic data wherever they process, apply, utilise, publish or distribute the data: and also that they specify that the relevant application and analysis (where applicable) result from their own processing of data.

Advance release calendar

An advance release calendar is disseminated on <http://www.statssa.gov.za>

Forthcoming issues

Issue	Expected date for publication
January 2013	20 February 2013
February 2013	20 March 2013
March 2013	17 April 2013
April 2013	22 May 2013
May 2013	19 June 2013
June 2013	24 July 2013

Stats SA products

A complete set of Stats SA publications is available in the Stats SA Library and the following libraries -
 National Library of South Africa, Pretoria Division
 National Library of South Africa, Cape Town Division
 Natal Society Library, Pietermaritzburg
 Library of Parliament, Cape Town
 Bloemfontein Public Library
 Johannesburg Public Library
 Eastern Cape Library Services, King William's Town
 Central Regional Library, Polokwane
 Central Reference Library, Nelspruit
 Central Reference Collection, Kimberley
 Central Reference Library, Mmabatho.

Stats SA also provides a subscription service.

Electronic services

A large range of data are available via on-line services. For more details about our electronic data services, contact (012) 310 8600 / 8390 / 8351 / 4892 / 8496 / 8095.

You can visit us on the Internet at: <http://www.statssa.gov.za>

Enquiries

Technical enquiries:	Marietjie Bennett, Anita Voges (012) 310 8077 / 8151
Telephone number:	(012) 310 8077 / 8151 (survey area) (012) 310 8600 / 8390 / 8351 / 4892 / 8496 / 8095 (user) (012) 310 8161 (publishing) (012) 310 8490 (library)
Fax number:	(012) 310 8502
Email:	cpi@statssa.gov.za (technical enquiries) info@statssa.gov.za (user information services) distribution@statssa.gov.za (orders)
Postal address:	Private Bag X44, Pretoria, 0001

Produced by Stats SA