



**stats sa**

Department:  
Statistics South Africa  
**REPUBLIC OF SOUTH AFRICA**

Private Bag X44, Pretoria, 0001, South Africa, ISibalo House, Koch Street, Salvokop, Pretoria, 0002  
www.statssa.gov.za, info@statssa.gov.za, Tel +27 12 310 8911

## **STATISTICAL RELEASE**

### **P0043**

# Statistics of liquidations and insolvencies (Preliminary)

September 2020

Embargoed until:  
26 October 2020  
14:30

**ENQUIRIES:**  
Joyce Essel-Mensah  
082 888 2374

**FORTHCOMING ISSUE:**  
October 2020

**EXPECTED RELEASE DATE:**  
23 November 2020



## Contents

<b>Liquidations: results for September 2020</b> .....	<b>3</b>
Table A – Number of liquidations.....	3
Figure 1 – Number of liquidations.....	3
<b>Insolvencies: results for August 2020</b> .....	<b>4</b>
Table B – Number of insolvencies.....	4
Figure 2 – Number of insolvencies.....	4
<b>Tables</b> .....	<b>5</b>
Table 1 – Total liquidations according to industry (number).....	5
Table 1.1 – Liquidations of companies according to industry (number).....	5
Table 1.2 – Liquidations of close corporations according to industry (number).....	5
Table 2 – Total liquidations (number).....	6
Table 2.1 – Compulsory liquidations (number).....	6
Table 2.2 – Voluntary liquidations (number).....	6
Table 3 – Total liquidations of companies (number).....	7
Table 3.1 – Compulsory liquidations of companies (number).....	7
Table 3.2 – Voluntary liquidations of companies (number).....	7
Table 4 – Total liquidations of close corporations (number).....	8
Table 4.1 – Compulsory liquidations of close corporations (number).....	8
Table 4.2 – Voluntary liquidations of close corporations (number).....	8
Table 5 – Insolvencies of individuals and partnerships (number).....	9
Table 6 – Seasonally adjusted number of insolvencies.....	9
<b>Explanatory notes</b> .....	<b>10</b>
<b>Glossary</b> .....	<b>11</b>
<b>Technical enquiries</b> .....	<b>11</b>
<b>General information</b> .....	<b>12</b>

## Liquidations: results for September 2020

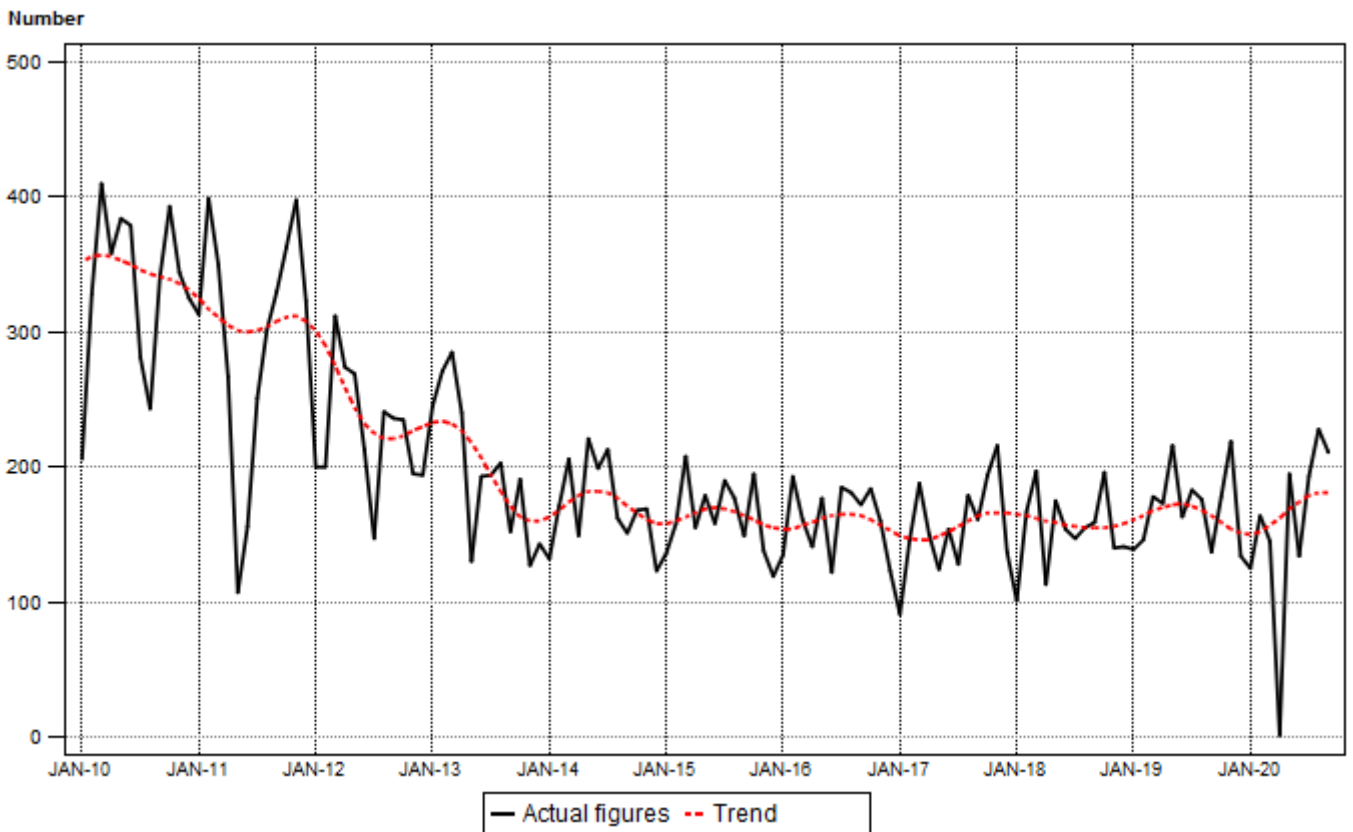
Table A – Number of liquidations

Number of liquidations September 2020	% change between September 2019 and September 2020	% change between July to September 2019 and July to September 2020	% change between January to September 2019 and January to September 2020
211	54,0	27,4	-7,7

The total number of liquidations increased by 27,4% in the third quarter of 2020 compared with the third quarter of 2019. A year-on-year increase of 54,0% was recorded in September 2020. Voluntary liquidations increased by 65 cases and compulsory liquidations increased by 9 cases.

The total number of liquidations decreased by 7,7% in the first nine months of 2020 compared with the first nine months of 2019.

Figure 1 – Number of liquidations



## Insolvencies: results for August 2020

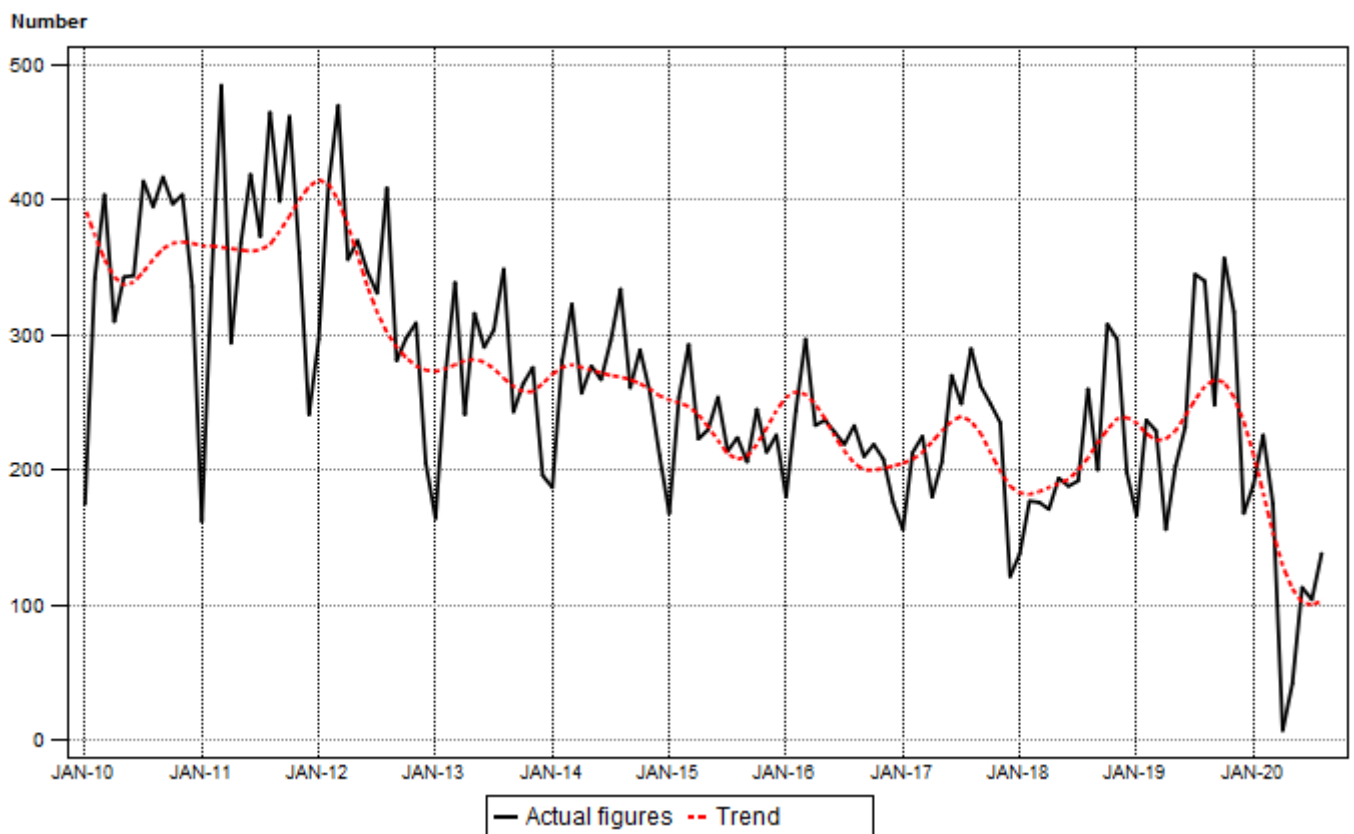
**Table B – Number of insolvencies**

Number of insolvencies August 2020	% change between August 2019 and August 2020	% change between June to August 2019 and June to August 2020	% change between January to August 2019 and January to August 2020
138	-59,4	-61,3	-47,9

The estimated number of insolvencies decreased by 61,3% in the three months ended August 2020 compared with the three months ended August 2019. There was a year-on-year decrease of 59,4% in August 2020.

Seasonally adjusted insolvencies decreased by 30,0% in August 2020 compared with July 2020. This followed month-on-month changes of -21,1% in July 2020 and 128,0% in June 2020 – see Table 6.

**Figure 2 – Number of insolvencies**



**Risenga Maluleke**  
**Statistician-General**

## Tables

**Table 1 – Total liquidations according to industry (number)**

Industry	January – September 2020			September 2019			August 2020			September 2020		
	C	V	Total	C	V	Total	C	V	Total	C	V	Total
1.Agriculture, hunting, forestry and fishing	2	5	7	0	1	1	0	1	1	0	1	1
2.Mining and quarrying	3	9	12	0	1	1	0	4	4	0	0	0
3.Manufacturing	5	66	71	1	5	6	0	14	14	0	10	10
4.Electricity, gas and water	0	5	5	0	1	1	0	3	3	0	0	0
5.Construction	9	59	68	0	4	4	1	7	8	0	10	10
6.Trade, catering and accommodation	31	241	272	2	25	27	4	35	39	3	40	43
7.Transport, storage, communication	2	29	31	0	2	2	0	4	4	0	4	4
8.Financing, insurance, real estate, business services	42	386	428	7	37	44	5	69	74	7	57	64
9.Community, social, personal services	4	81	85	0	7	7	1	14	15	2	14	16
10.Unclassified	28	388	416	1	43	44	2	64	66	8	55	63
<b>Total number of liquidations</b>	<b>126</b>	<b>1 269</b>	<b>1 395</b>	<b>11</b>	<b>126</b>	<b>137</b>	<b>13</b>	<b>215</b>	<b>228</b>	<b>20</b>	<b>191</b>	<b>211</b>

**Table 1.1 – Liquidations of companies according to industry (number)**

Industry	January – September 2020			September 2019			August 2020			September 2020		
	C	V	Total	C	V	Total	C	V	Total	C	V	Total
1.Agriculture, hunting, forestry and fishing	0	0	0	0	1	1	0	0	0	0	0	0
2.Mining and quarrying	3	8	11	0	1	1	0	3	3	0	0	0
3.Manufacturing	1	30	31	1	4	5	0	8	8	0	4	4
4.Electricity, gas and water	0	4	4	0	1	1	0	2	2	0	0	0
5.Construction	4	11	15	0	1	1	1	1	2	0	5	5
6.Trade, catering and accommodation	12	102	114	2	10	12	3	15	18	1	9	10
7.Transport, storage, communication	1	11	12	0	1	1	0	1	1	0	2	2
8.Financing, insurance, real estate, business services	29	196	225	2	20	22	3	36	39	5	36	41
9.Community, social, personal services	0	16	16	0	2	2	0	3	3	0	2	2
10.Unclassified	25	345	370	1	35	36	2	57	59	7	47	54
<b>Total number of liquidations</b>	<b>75</b>	<b>723</b>	<b>798</b>	<b>6</b>	<b>76</b>	<b>82</b>	<b>9</b>	<b>126</b>	<b>135</b>	<b>13</b>	<b>105</b>	<b>118</b>

**Table 1.2 – Liquidations of close corporations according to industry (number)**

Industry	January – September 2020			September 2019			August 2020			September 2020		
	C	V	Total	C	V	Total	C	V	Total	C	V	Total
1.Agriculture, hunting, forestry and fishing	2	5	7	0	0	0	0	1	1	0	1	1
2.Mining and quarrying	0	1	1	0	0	0	0	1	1	0	0	0
3.Manufacturing	4	36	40	0	1	1	0	6	6	0	6	6
4.Electricity, gas and water	0	1	1	0	0	0	0	1	1	0	0	0
5.Construction	5	48	53	0	3	3	0	6	6	0	5	5
6.Trade, catering and accommodation	19	139	158	0	15	15	1	20	21	2	31	33
7.Transport, storage, communication	1	18	19	0	1	1	0	3	3	0	2	2
8.Financing, insurance, real estate, business services	13	190	203	5	17	22	2	33	35	2	21	23
9.Community, social, personal services	4	65	69	0	5	5	1	11	12	2	12	14
10.Unclassified	3	43	46	0	8	8	0	7	7	1	8	9
<b>Total number of liquidations</b>	<b>51</b>	<b>546</b>	<b>597</b>	<b>5</b>	<b>50</b>	<b>55</b>	<b>4</b>	<b>89</b>	<b>93</b>	<b>7</b>	<b>86</b>	<b>93</b>

C = Compulsory.

V = Voluntary.

**Table 2 – Total liquidations (number)**

Month	2014	2015	2016	2017	2018	2019	2020
January	132	136	135	91	101	139	125
February	171	158	193	146	167	146	164
March	206	208	161	188	197	178	145
April	149	155	141	150	113	173	0
May	221	179	177	124	175	216	195
June	199	158	122	154	154	163	134
July	213	190	185	128	147	183	193
August	162	177	181	179	155	176	228
September	151	149	172	161	159	137	211
October	168	195	184	194	196	178	
November	169	138	160	216	140	219	
December	123	119	123	137	141	134	
<b>Total</b>	<b>2 064</b>	<b>1 962</b>	<b>1 934</b>	<b>1 868</b>	<b>1 845</b>	<b>2 042</b>	

**Table 2.1 – Compulsory liquidations (number)**

Month	2014	2015	2016	2017	2018	2019	2020
January	22	13	16	6	11	17	29
February	12	22	13	13	26	14	10
March	18	39	14	14	15	10	8
April	35	7	24	4	16	35	0
May	29	20	14	15	8	31	17
June	89	29	10	17	11	24	12
July	47	34	25	10	17	23	17
August	25	23	9	21	23	16	13
September	20	15	29	45	39	11	20
October	33	14	20	32	17	15	
November	23	12	14	23	9	50	
December	13	10	12	11	7	12	
<b>Total</b>	<b>366</b>	<b>238</b>	<b>200</b>	<b>211</b>	<b>199</b>	<b>258</b>	

**Table 2.2 – Voluntary liquidations (number)**

Month	2014	2015	2016	2017	2018	2019	2020
January	110	123	119	85	90	122	96
February	159	136	180	133	141	132	154
March	188	169	147	174	182	168	137
April	114	148	117	146	97	138	0
May	192	159	163	109	167	185	178
June	110	129	112	137	143	139	122
July	166	156	160	118	130	160	176
August	137	154	172	158	132	160	215
September	131	134	143	116	120	126	191
October	135	181	164	162	179	163	
November	146	126	146	193	131	169	
December	110	109	111	126	134	122	
<b>Total</b>	<b>1 698</b>	<b>1 724</b>	<b>1 734</b>	<b>1 657</b>	<b>1 646</b>	<b>1 784</b>	

**Table 3 – Total liquidations of companies (number)**

Month	2014	2015	2016	2017	2018	2019	2020
January	74	79	66	42	67	64	72
February	87	80	100	81	94	78	83
March	89	101	78	80	92	96	85
April	78	70	80	73	64	89	0
May	108	87	96	56	109	114	110
June	104	90	65	84	74	85	80
July	109	93	108	62	77	108	115
August	86	87	97	94	68	78	135
September	75	79	85	85	65	82	118
October	78	88	98	106	102	98	
November	75	59	72	107	71	119	
December	65	56	67	88	89	68	
<b>Total</b>	<b>1 028</b>	<b>969</b>	<b>1 012</b>	<b>958</b>	<b>972</b>	<b>1 079</b>	

**Table 3.1 – Compulsory liquidations of companies (number)**

Month	2014	2015	2016	2017	2018	2019	2020
January	16	9	9	3	5	8	16
February	7	16	9	12	22	7	1
March	6	18	6	6	5	5	4
April	24	5	17	3	14	16	0
May	20	16	9	5	5	19	9
June	54	22	4	11	8	13	11
July	26	21	9	4	9	16	12
August	20	12	6	14	15	5	9
September	13	3	17	25	22	6	13
October	22	8	13	23	11	8	
November	6	7	6	9	8	30	
December	8	3	8	8	4	2	
<b>Total</b>	<b>222</b>	<b>140</b>	<b>113</b>	<b>123</b>	<b>128</b>	<b>135</b>	

**Table 3.2 – Voluntary liquidations of companies (number)**

Month	2014	2015	2016	2017	2018	2019	2020
January	58	70	57	39	62	56	56
February	80	64	91	69	72	71	82
March	83	83	72	74	87	91	81
April	54	65	63	70	50	73	0
May	88	71	87	51	104	95	101
June	50	68	61	73	66	72	69
July	83	72	99	58	68	92	103
August	66	75	91	80	53	73	126
September	62	76	68	60	43	76	105
October	56	80	85	83	91	90	
November	69	52	66	98	63	89	
December	57	53	59	80	85	66	
<b>Total</b>	<b>806</b>	<b>829</b>	<b>899</b>	<b>835</b>	<b>844</b>	<b>944</b>	

**Table 4 – Total liquidations of close corporations (number)**

Month	2014	2015	2016	2017	2018	2019	2020
January	58	57	69	49	34	75	53
February	84	78	93	65	73	68	81
March	117	107	83	108	105	82	60
April	71	85	61	77	49	84	0
May	113	92	81	68	66	102	85
June	95	68	57	70	80	78	54
July	104	97	77	66	70	75	78
August	76	90	84	85	87	98	93
September	76	70	87	76	94	55	93
October	90	107	86	88	94	80	
November	94	79	88	109	69	100	
December	58	63	56	49	52	66	
<b>Total</b>	<b>1 036</b>	<b>993</b>	<b>922</b>	<b>910</b>	<b>873</b>	<b>963</b>	

**Table 4.1 – Compulsory liquidations of close corporations (number)**

Month	2014	2015	2016	2017	2018	2019	2020
January	6	4	7	3	6	9	13
February	5	6	4	1	4	7	9
March	12	21	8	8	10	5	4
April	11	2	7	1	2	19	0
May	9	4	5	10	3	12	8
June	35	7	6	6	3	11	1
July	21	13	16	6	8	7	5
August	5	11	3	7	8	11	4
September	7	12	12	20	17	5	7
October	11	6	7	9	6	7	
November	17	5	8	14	1	20	
December	5	7	4	3	3	10	
<b>Total</b>	<b>144</b>	<b>98</b>	<b>87</b>	<b>88</b>	<b>71</b>	<b>123</b>	

**Table 4.2 – Voluntary liquidations of close corporations (number)**

Month	2014	2015	2016	2017	2018	2019	2020
January	52	53	62	46	28	66	40
February	79	72	89	64	69	61	72
March	105	86	75	100	95	77	56
April	60	83	54	76	47	65	0
May	104	88	76	58	63	90	77
June	60	61	51	64	77	67	53
July	83	84	61	60	62	68	73
August	71	79	81	78	79	87	89
September	69	58	75	56	77	50	86
October	79	101	79	79	88	73	
November	77	74	80	95	68	80	
December	53	56	52	46	49	56	
<b>Total</b>	<b>892</b>	<b>895</b>	<b>835</b>	<b>822</b>	<b>802</b>	<b>840</b>	



**Table 5 – Insolvencies of individuals and partnerships (number)**

Month	1/ 2014	1/ 2015	1/ 2016	1/ 2017	1/ 2018	1/ 2019	1/ 2020
January	187	168	180	156	138	166	189
February	281	254	244	213	177	237	226
March	323	293	297	225	176	229	175
April	257	223	233	180	171	156	7
May	277	230	237	206	194	203	42
June	267	254	228	270	188	232	113
July	296	214	219	249	192	345	104
August	334	224	233	290	260	340	138
September	261	206	210	262	200	248	
October	289	245	219	249	308	357	
November	258	213	208	235	297	317	
December	211	226	176	121	198	168	
<b>Total</b>	<b>3 241</b>	<b>2 750</b>	<b>2 684</b>	<b>2 656</b>	<b>2 499</b>	<b>2 998</b>	

1/ Preliminary.

**Table 6 – Seasonally adjusted number of insolvencies**

Month	Number				Month-on-month % change			
	2017	2018	2019	2020	2017	2018	2019	2020
January	217	182	211	239	3,3	19,0	-17,6	10,6
February	213	177	236	232	-1,8	-2,7	11,8	-2,9
March	192	181	235	180	-9,9	2,3	-0,4	-22,4
April	222	194	198	9	15,6	7,2	-15,7	-95,0
May	213	203	215	50	-4,1	4,6	8,6	455,6
June	256	191	245	114	20,2	-5,9	14,0	128,0
July	250	185	314	90	-2,3	-3,1	28,2	-21,1
August	235	205	278	117	-6,0	10,8	-11,5	30,0
September	275	215	256		17,0	4,9	-7,9	
October	210	242	266		-23,6	12,6	3,9	
November	197	243	269		-6,2	0,4	1,1	
December	153	256	216		-22,3	5,3	-19,7	

## Explanatory notes

- |                                  |          |   |
|----------------------------------|----------|---|
| <b>Introduction</b>              | <b>1</b> | Statistics South Africa (Stats SA) collects administrative information on liquidations from Companies and Intellectual Property Commission, Department of Trade, Industry and Competition, while information on insolvencies is gathered from Notices of the Master of the High Court that appear in the Government Gazette.  |
|                                  | <b>2</b> | This statistical release reflects voluntary and compulsory liquidations of companies and close corporations and insolvencies of individuals and partnerships.   |
| <b>Purpose of the survey</b>     | <b>3</b> | The aggregated data in this release are used by the private and public sectors to measure economic performance and are also an important indicator of the scope of unpaid debt in South Africa.   |
|                                  | <b>4</b> | Due to insolvencies figures being available late, the data on insolvencies are published a month later than liquidations.   |
| <b>Scope of the survey</b>       | <b>5</b> | This survey covers the total number of: <ul style="list-style-type: none"> <li>• companies and close corporations which were liquidated; and</li> <li>• individuals and partnerships placed under final sequestration.</li> </ul>   |
| <b>Symbols and abbreviations</b> | <b>6</b> | Stats SA – Statistics South Africa  |
| <b>Seasonal adjustment</b>       | <b>7</b> | Seasonally adjusted estimates are generated each month using the X-12-ARIMA Seasonal Adjustment Program developed by the US Bureau of the Census, 1968. Seasonal adjustment is a means of removing the estimated effects of normal seasonal variation from the series so that the effects of other influences on the series can be recognised more clearly. Seasonal adjustment does not aim to remove irregular or non-seasonal influences which may be present in any particular month.   |
|                                  | <b>8</b> | Influences that are volatile or unsystematic can still make it difficult to interpret the movement of the series even after adjustment for seasonal variations. This means the month-to-month movements of seasonally adjusted estimates may not be reliable indicators of trend behaviour. The X-12-ARIMA procedure for liquidations and insolvencies is described in more detail on the Stats SA website:<br><a href="#">click to download seasonal adjustment P0043 April 2018</a> <p><b>Note:</b> Owing to the impact of the COVID-19 lockdown, additive outlier adjustments were performed; the methodology will be reviewed as more data points are added to the time series.</p> |
| <b>Trend cycle</b>               | <b>9</b> | The trend is the long-term pattern or movement of a time series. The X-12- ARIMA Seasonal Adjustment Program is used for smoothing seasonally adjusted estimates to estimate the underlying trend cycle.  |

## Glossary

<b>Compulsory liquidation</b>	A compulsory liquidation takes place when the affairs of a company or close corporation are wound up by order of the court.
<b>Insolvency</b>	Insolvency refers to an individual or partnership which is unable to pay its debt and is placed under final sequestration. The number of insolvencies does not refer to the number of persons involved, as a partnership which is unable to pay its debt is regarded as one insolvency, irrespective of the number of partners.
<b>Liquidation</b>	Liquidation refers to the winding-up of the affairs of a company or close corporation when liabilities exceed assets and it can be resolved by voluntary action or by an order of the court.
<b>Voluntary liquidation</b>	A voluntary liquidation takes place when a company or close corporation, by own choice, resolves to wind-up its affairs.

## Technical enquiries

<b>Onica Mushwana</b>	Telephone number: 073 554 1183 Email: <a href="mailto:onicama@statssa.gov.za">onicama@statssa.gov.za</a>
<b>Joyce Essel-Mensah</b>	Telephone number: 082 888 2374 Email: <a href="mailto:JoyceE@statssa.gov.za">JoyceE@statssa.gov.za</a>

## General information

Stats SA publishes approximately 300 different statistical releases each year. It is not economically viable to produce them in more than one of South Africa's eleven official languages. Since the releases are used extensively, not only locally but also by international economic and social-scientific communities, Stats SA releases are published in English only.

Stats SA has copyright on this publication. Users may apply the information as they wish, provided that they acknowledge Stats SA as the source of the basic data wherever they process, apply, utilise, publish or distribute the data; and also that they specify that the relevant application and analysis (where applicable) result from their own processing of the data.

## Stats SA products

A complete set of Stats SA publications is available at the Stats SA library and the following libraries:

National Library of South Africa, Pretoria Division  
National Library of South Africa, Cape Town Division  
Natal Society Library, Pietermaritzburg  
Library of Parliament, Cape Town  
Bloemfontein Public Library  
Johannesburg Public Library  
Eastern Cape Library Services, King William's Town  
Central Regional Library, Polokwane  
Central Reference Library, Mbombela  
Central Reference Collection, Kimberley  
Central Reference Library, Mmabatho

Stats SA also provides a subscription service.

## Electronic services

A large range of data is available via online services. For more detail about our electronic services, contact Stats SA's user information service at (012) 310 8600.

You can visit us on the Internet at: [www.statssa.gov.za](http://www.statssa.gov.za)

## General enquiries

User information services	Telephone number: (012) 310 8600 Email address: <a href="mailto:info@statssa.gov.za">info@statssa.gov.za</a>
Orders/subscription services	Telephone number: (012) 310 8619 Email address: <a href="mailto:millies@statssa.gov.za">millies@statssa.gov.za</a>
Postal address	Private Bag X44, Pretoria, 0001

*Produced by Stats SA*