
Census 2011 Municipal report

Mpumalanga

Report No. 03-01-56

Statistics South Africa

Pali Lehohla
Statistician-General

Census 2011 Municipal report – Mpumalanga / Statistics South Africa

Published by Statistics South Africa, Private Bag X44, Pretoria 0001

© Statistics South Africa, 2012

Users may apply or process this data, provided Statistics South Africa (Stats SA) is acknowledged as the original source of the data; that it is specified that the application and/ or analysis is the result of the user's independent processing of the data; and that neither the basic data nor any reprocessed version or application thereof may be sold or offered for sale in any form whatsoever without prior permission from Stats SA.

Stats SA Library Cataloguing-in-Publication (CIP) Data

Census 2011 Municipal report – Mpumalanga / Statistics South Africa. Pretoria: Statistics South Africa, 2012

Report no.: 03-01-56
85pp

ISBN 978-0-621-41466-0

A complete set of Stats SA publications is available at Stats SA Library and the following libraries:

National Library of South Africa, Pretoria Division
National Library of South Africa, Cape Town Division
Library of Parliament, Cape Town
Bloemfontein Public Library
Natal Society Library, Pietermaritzburg
Johannesburg Public Library
Eastern Cape Library Services, King William's Town
Central Regional Library, Polokwane
Central Reference Library, Nelspruit
Central Reference Collection, Kimberley
Central Reference Library, Mmabatho

This report is available on the Stats SA website: www.statssa.gov.za

For **technical enquiries** please contact:

Diego Iturralde
Tel: 012 310 8922
Fax: 086 670 9723
Email: diegoi@statssa.gov.za

For **dissemination enquiries** contact Printing and Distribution, Statistics South Africa

Ina du Plessis
Email: inadp@statssa.gov.za

Table of contents

Introduction	1
8. Mpumalanga municipalities	2
8.1 Demographics.....	2
8.1.1 Age-sex structure of province	2
8.1.2 Population growth rates	6
8.1.3 Sex ratios.....	7
8.1.4 Population group	8
8.1.5 Population by functional age group	9
8.1.6 Dependency ratios.....	10
8.1.7 Marital status	11
8.2 Education.....	12
8.2.1 Highest level of education	12
8.2.2 School attendance.....	13
8.3 Labour market.....	14
8.3.1 Unemployment rate	14
8.4 Housing.....	15
8.4.1 Average household size	15
8.4.2 Type of main dwelling.....	16
8.4.3 Tenure status.....	17
8.4.4 Household goods.....	18
8.4.5 Electricity for lighting, heating, cooking.....	19
8.4.6 Access to piped water	20
8.4.7 Refuse disposal	21
8.4.8 Toilet facilities	22
8.4.9 Average household income	23
8.4.10 Female headed households	24
8.4.11 Child headed households	25
Appendix.....	26

List of figures

Figure 8.1.1.1: Distribution of the population by age and sex, Mpumalanga – 1996, 2001 and 2011 2

Figure 8.1.1.2: Distribution of the population by age and sex, Gert Sibande – 1996, 2001 and 2011 3

Figure 8.1.1.3: Distribution of the population by age and sex, Nkangala – 1996, 2001 and 2011 4

Figure 8.1.1.4: Distribution of the population by age and sex, Ehlanzeni – 1996, 2001 and 2011 5

Figure 8.1.2.1: Population growth rates by district municipality – 1996, 2001 and 2011 6

Figure 8.1.3.1: Sex ratios by district municipality – 1996, 2001 and 2011 7

Figure 8.1.4.1: Distribution of the population by population group and district municipality – 1996, 2001 and 2011 8

Figure 8.1.5.1: Distribution of the population by functional age groups and district municipality – 1996, 2001 and 2011 9

Figure 8.1.6.1: Dependency ratios by district municipality – 1996, 2001 and 2011 10

Figure 8.1.7.1: Distribution of the population by marital status and district municipality – 1996, 2001 and 2011 11

Figure 8.2.1.1: Distribution of the population aged 20 years and older by highest level of education attained and district municipality – 1996, 2001 and 2011 12

Figure 8.2.2.1: Distribution of the population aged between 5 and 24 years by school attendance and district municipality – 1996, 2001 and 2011 13

Figure 8.3.1.1: Unemployment rate (official definition) by district municipality – 1996, 2001 and 2011 14

Figure 8.4.1.1: Average household size by district municipality – 1996, 2001 and 2011 15

Figure 8.4.2.1: Distribution of households by type of main dwelling and district municipality – 1996, 2001 and 2011 16

Figure 8.4.3.1: Distribution of households by tenure status by district municipality – 2001 and 2011 17

Figure 8.4.4.1: Distribution of households with a radio, television, computer, refrigerator, landline/ telephone, cellphone and access to internet by district Municipality – 2001 and 2011 18

Figure 8.4.5.1: Distribution of households using electricity for lighting, cooking and heating by district municipality – 1996, 2001 and 2011 19

Figure 8.4.6.1: Distribution of households by access to piped water and district municipality – 1996, 2001 and 2011 20

Figure 8.4.7.1: Distribution of households by type of refuse removal and district municipality – 1996, 2001 and 2011 21

Figure 8.4.8.1: Distribution of households by type of toilet facility and district municipality – 1996, 2001 and 2011 22

Figure 8.4.9.1: Distribution of average household income by district municipality – 2001 and 2011 23

Figure 8.4.10.1: Distribution of female headed households by district municipality – 1996, 2001 and 2011 24

Figure 8.4.11.1: Distribution of child headed households and district municipality – 1996, 2001 and 2011 25

List of tables

Age and sex structure – DC30: Gert Sibande 26

Table 8.1.1.1: Distribution of the population by age and sex; Albert Luthuli municipality – 1996, 2001 and 2011 26

Table 8.1.1.2: Distribution of the population by age and sex; Msukaligwa municipality – 1996, 2001 and 2011 27

Table 8.1.1.3: Distribution of the population by age and sex; Mkhondo municipality – 1996, 2001 and 2011 28

Table 8.1.1.4: Distribution of the population by age and sex; Pixley Ka Seme municipality – 1996, 2001 and 2011 29

Table 8.1.1.5: Distribution of the population by age and sex; Lekwa municipality – 1996, 2001 and 2011 30

Table 8.1.1.6: Distribution of the population by age and sex; Dipaleseng municipality – 1996, 2001 and 2011 31

Table 8.1.1.7: Distribution of the population by age and sex; Govan Mbeki municipality – 1996, 2001 and 2011 32

Age and sex structure – DC31: Nkangala 33

Table 8.1.1.8: Distribution of the population by age and sex; Victor Khanye municipality – 1996, 2001 and 2011 33

Table 8.1.1.9: Distribution of the population by age and sex; Emalahleni municipality – 1996, 2001 and 2011 34

Table 8.1.1.10: Distribution of the population by age and sex; Steve Tshwete municipality – 1996, 2001 and 2011 35

Table 8.1.1.11: Distribution of the population by age and sex; Emakhazeni municipality – 1996, 2001 and 2011 36

Table 8.1.1.12: Distribution of the population by age and sex; Thembisile municipality – 1996, 2001 and 2011 37

Table 8.1.1.13: Distribution of the population by age and sex; Dr JS Moroka municipality – 1996, 2001 and 2011 38

Age and sex structure – DC32: Ehlanzeni 39

Table 8.1.1.14: Distribution of the population by age and sex; Thaba Chweu municipality – 1996, 2001 and 2011 39

Table 8.1.1.15: Distribution of the population by age and sex; Mbombela municipality – 1996, 2001 and 2011 40

Table 8.1.1.16: Distribution of the population by age and sex; Umjindi municipality – 1996, 2001 and 2011 41

Table 8.1.1.17: Distribution of the population by age and sex; Nkomazi municipality – 1996, 2001 and 2011 42

Table 8.1.1.18: Distribution of the population by age and sex; Bushbuckridge municipality – 1996, 2001 and 2011 43

Table 8.1.2.1: Population growth rates by municipality – 1996, 2001 and 2011 44

Table 8.1.3.1: Sex ratios by municipality – 1996, 2001 and 2011 45

Table 8.1.4.1: Distribution of the population by population group (Black African), sex and municipality – 1996, 2001 and 2011 46

Table 8.1.4.2: Distribution of the population by population group (Coloured), sex and municipality – 1996, 2001 and 2011 47

Table 8.1.4.3: Distribution of the population by population group (Indian/ Asian), sex and municipality – 1996, 2001 and 2011 48

Table 8.1.4.4: Distribution of the population by population group (White), sex and municipality – 1996, 2001 and 2011 49

Table 8.1.5.1: Distribution of the population by functional age groups, sex and municipality – 1996, 2001 and 2011 50

Table 8.1.6.1: Dependency ratios by municipality – 1996, 2001 and 2011 54

Table 8.1.7.1: Distribution of the population by marital status and municipality – 1996, 2001 and 2011	55
Table 8.2.1.1: Distribution of the population aged 20 years and older by highest level of education attained, sex and municipality – 1996, 2001 and 2011	57
Table 8.2.2.1: Distribution of the population aged between 5 and 24 years by school attendance, sex and municipality – 1996, 2001 and 2011	65
Table 8.3.1.1: Distribution of the population aged between 15 and 64 years by employment status – 1996, 2001 and 2011	68
Table 8.4.1.1: Average household size by municipality – 1996, 2001 and 2011	69
Table 8.4.2.1: Distribution of households by type of main dwelling and municipality – 1996, 2001 and 2011	70
Table 8.4.3.1: Distribution of households by tenure status and municipality – 2001 and 2011	71
Table 8.4.4.1: Distribution of households with a radio, television, refrigerator, computer, cellphone, landline/ telephone and access to internet by municipality – 2001 and 2011	72
Table 8.4.5.1: Distribution of households using electricity for lighting, cooking and heating by municipality – 1996, 2001 and 2011	73
Table 8.4.6.1: Distribution of households by access to piped water and municipality – 1996, 2001 and 2011	74
Table 8.4.7.1: Distribution of households by type of refuse removal and municipality – 1996, 2001 and 2011	75
Table 8.4.8.1: Distribution of households by type of toilet facility and municipality – 1996, 2001 and 2011	76
Table 8.4.9.1: Distribution of average household income by municipality – 2001 and 2011	77
Table 8.4.10.1: Distribution of female headed households by municipality – 1996, 2001 and 2011	78
Table 8.4.11.1: Distribution of child headed households by municipality – 1996, 2001 and 2011	79

Introduction

South Africa has had three censuses since the first general elections in 1994. The first census was conducted in 1996, the second one followed five years later (2001), whilst the recent census was conducted just over a year ago (2011). In this publication, data from the three censuses are compared.

The following points are brought to the attention of the reader of this publication:

- Comparisons of the results of labour market indicators in the post-apartheid population censuses over time have been a cause for concern. Improvements to key questions over the years mean that the labour market outcomes based on the post-apartheid censuses have to be analysed with caution. Such analysis will be the subject of research published in a separate publication in 2013. The differences in the results over the years may be partly attributable to improvements in the questionnaire since 1996 rather than to actual developments in the labour market. The numbers published in this volume for the 1996, 2001, and 2011 censuses are therefore not comparable over time and are higher from those published by Statistics South Africa in the surveys designed specifically for capturing official labour market results.
- For purposes of comparison over the period 1996–2011, certain categories of responses to questions in the censuses of 1996, 2001 and 2011, have either been merged or separated.
- The tenure status question for 1996 has been dropped since the question asked was totally unrelated to that asked thereafter. Comparisons for 2001 and 2011 do however remain.
- All household variables are controlled for housing units only and hence exclude all collective living arrangements as well as transient populations.
- The slight differences in totals for annual household income as compared to that published in the Statistical Release of Census 2011 are due to rounding.
- When making comparisons of any indicator it must be taken into account that the time period between the first two censuses is five years and that between the second and third censuses is ten years. Although a census captures information at one given point in time, the period available for an indicator to change is different.

8. Mpumalanga

8.1 Demographics

8.1.1 Age-sex structure of province

Figures: 8.1.1.1 to Figure: 8.1.1.4 show the pyramids for Mpumalanga and its districts respectively. The pyramids indicate that the population is still young; the majority of the population is aged below 35 years.

Figure 8.1.1.1: Distribution of population by age and sex, Mpumalanga – 1996, 2001 and 2011

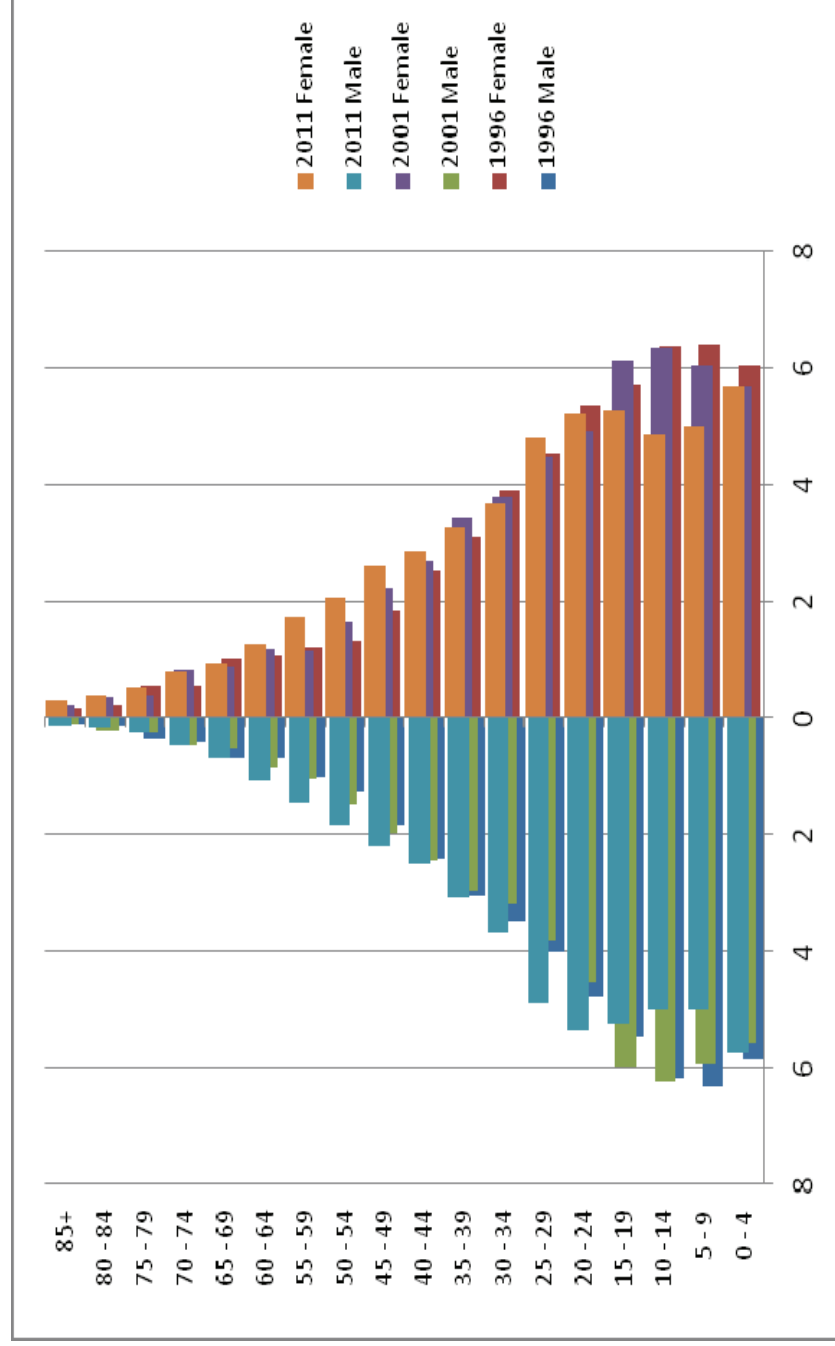


Figure 8.1.1.2: Distribution of population by age and sex, Gert Sibande – 1996, 2001 and 2011

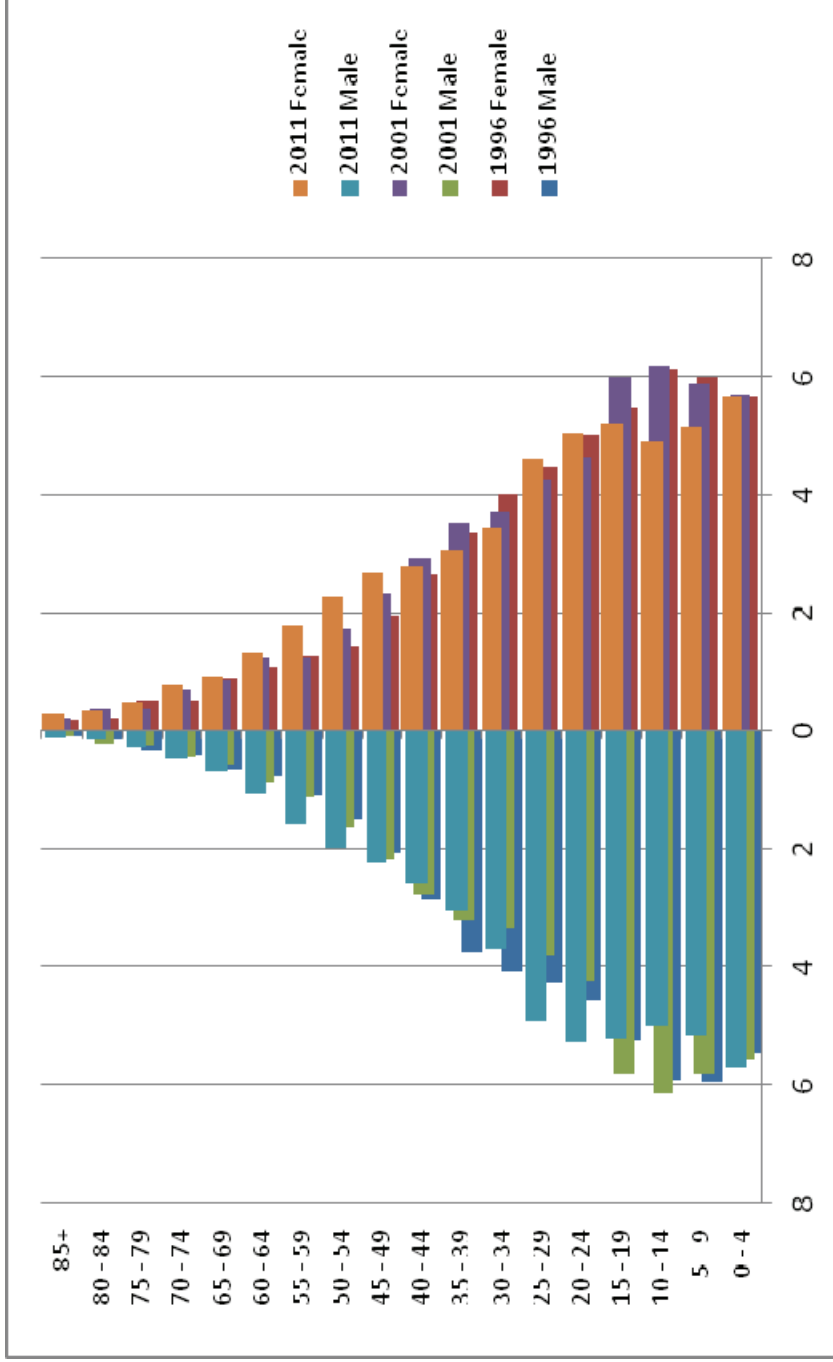


Figure 8.1.1.3: Distribution of population by age and sex, Nkangala – 1996, 2001 and 2011

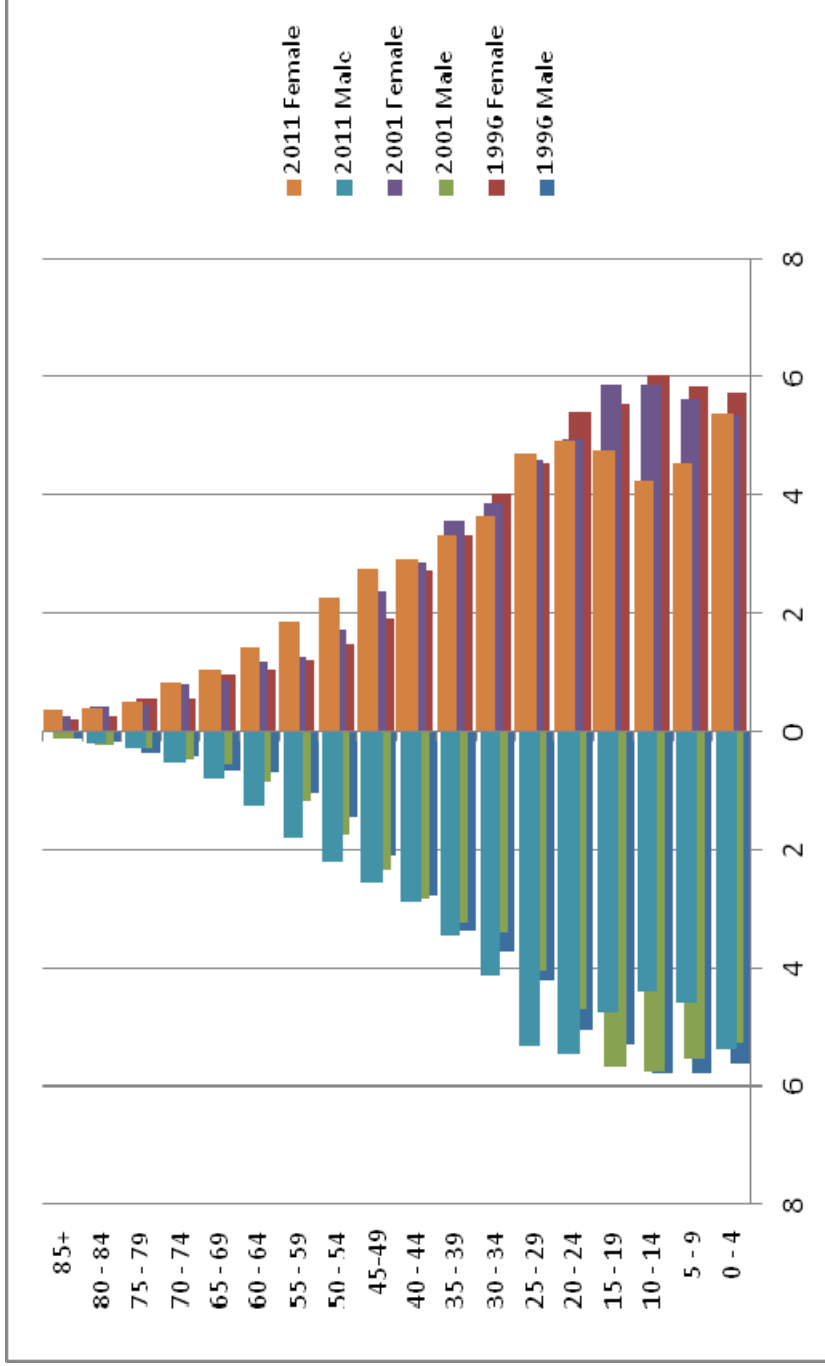
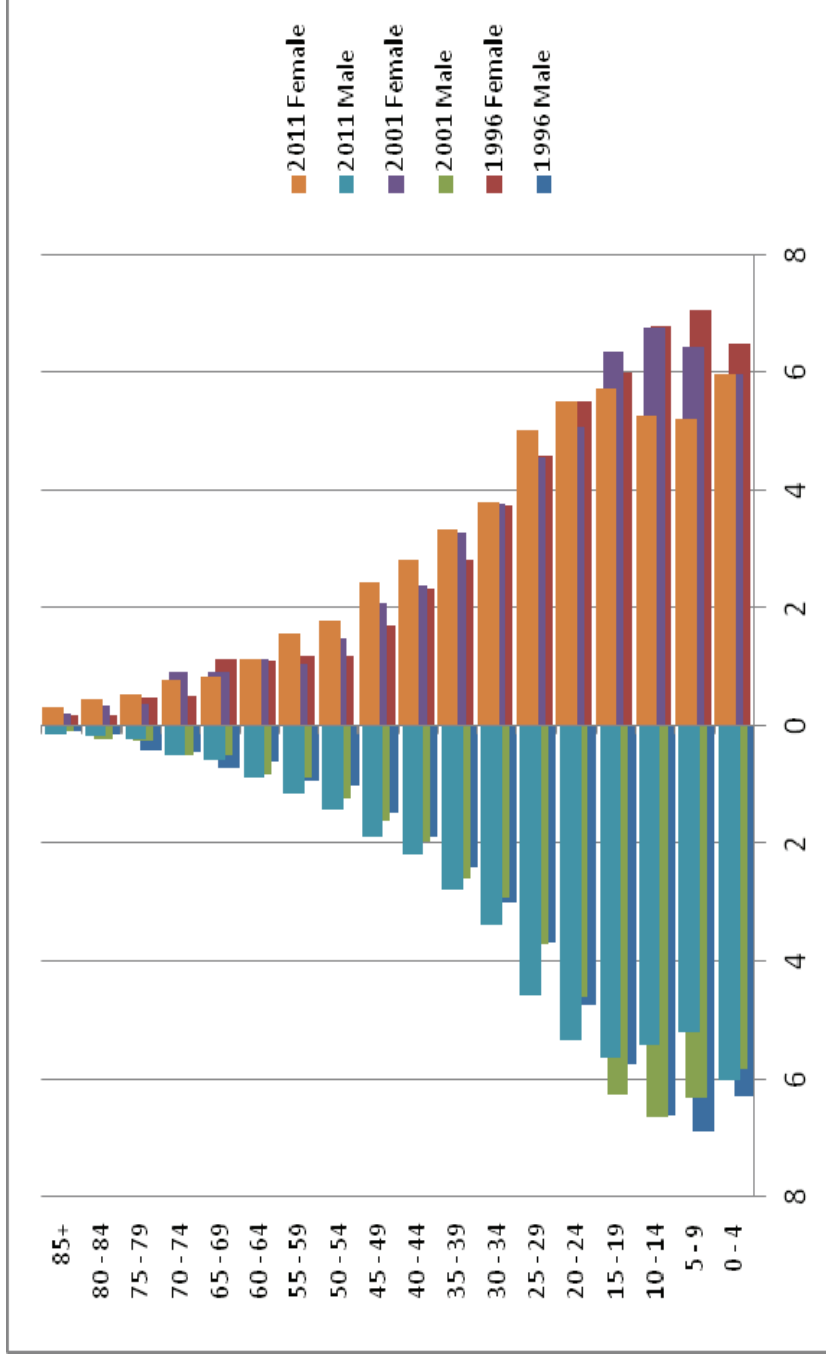


Figure 8.1.1.4: Distribution of population by age and sex, Ehlanzeni – 1996, 2001 and 2011



8.1.2 Population growth rates

Figure 8.1.2.1: Population growth rates by district municipality – 1996, 2001 and 2011

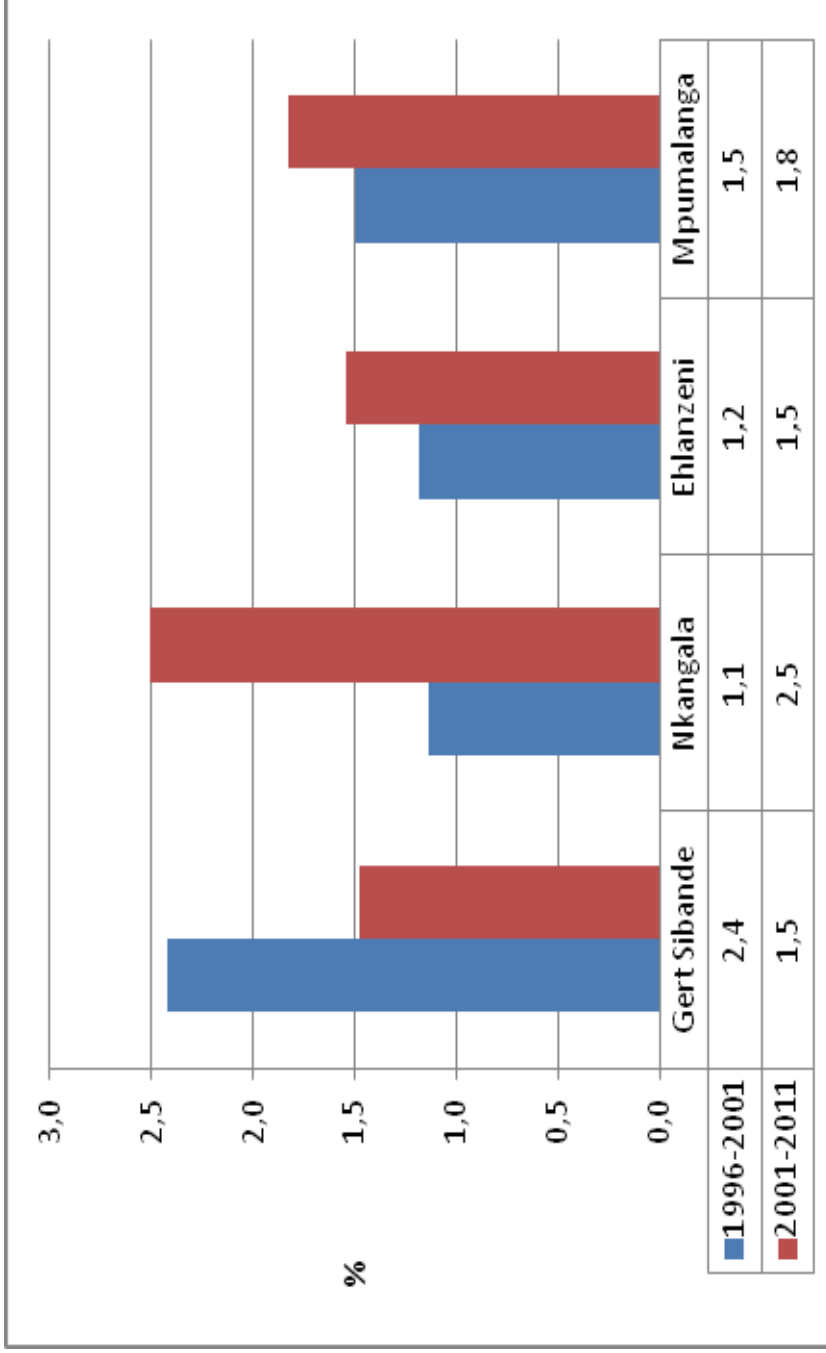


Figure 8.1.2.1 shows that the province has experienced a slow population growth for the period between 1996 and 2001 and 2001 and 2011. Gert Sibande has experienced a drastic decline in population growth; conversely Nkangala has seen an increase in population growth.

8.1.3 Sex ratios

Figure 8.1.3.1: Sex ratios by district municipality – 1996, 2001 and 2011

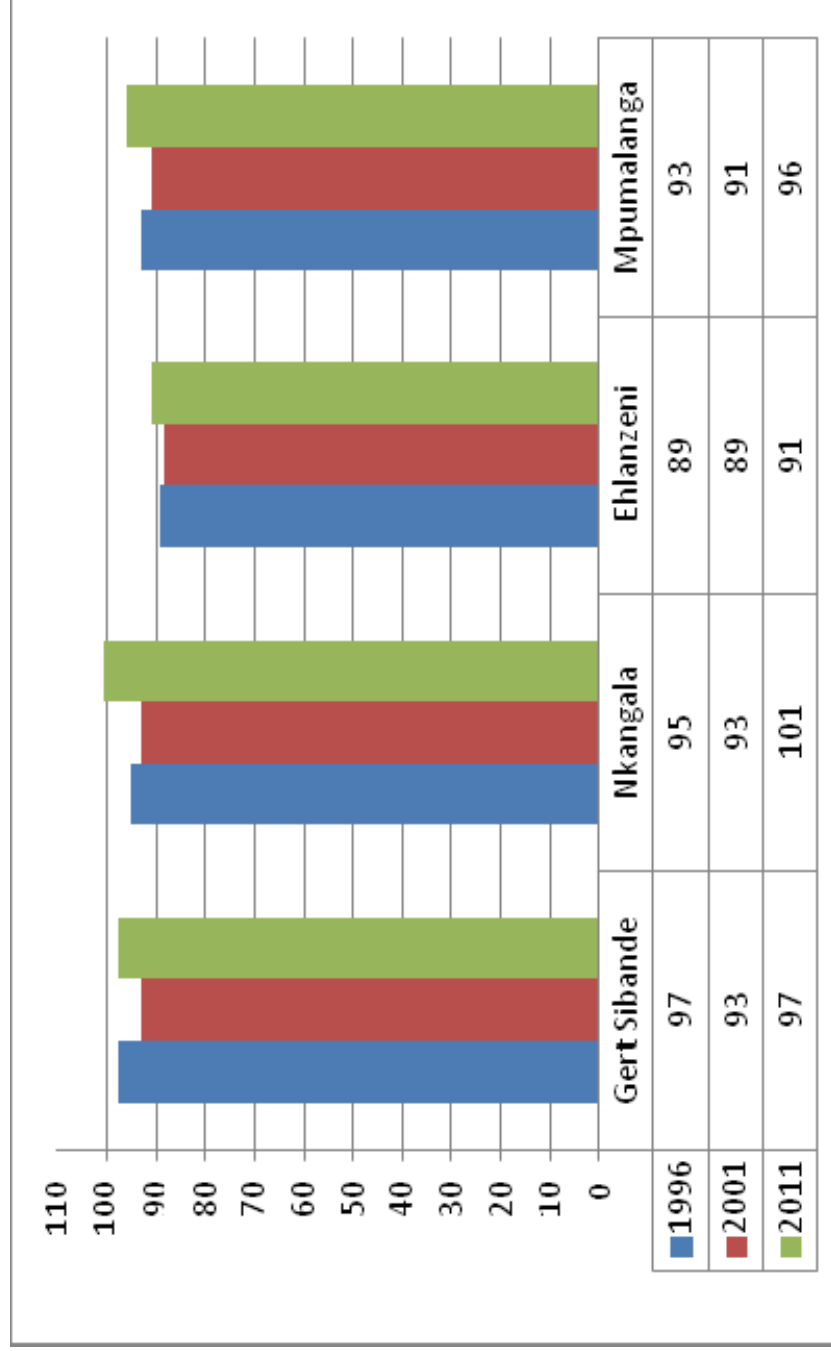


Figure 8.1.3.1 shows that in general there is a higher proportion of females than males in the province except in Nkangala district in 2011 as illustrated by the 101 sex ratio.

8.1.4 Population group

Figure 8.1.4.1: Distribution of the population by population group and district municipality – 1996, 2001 and 2011

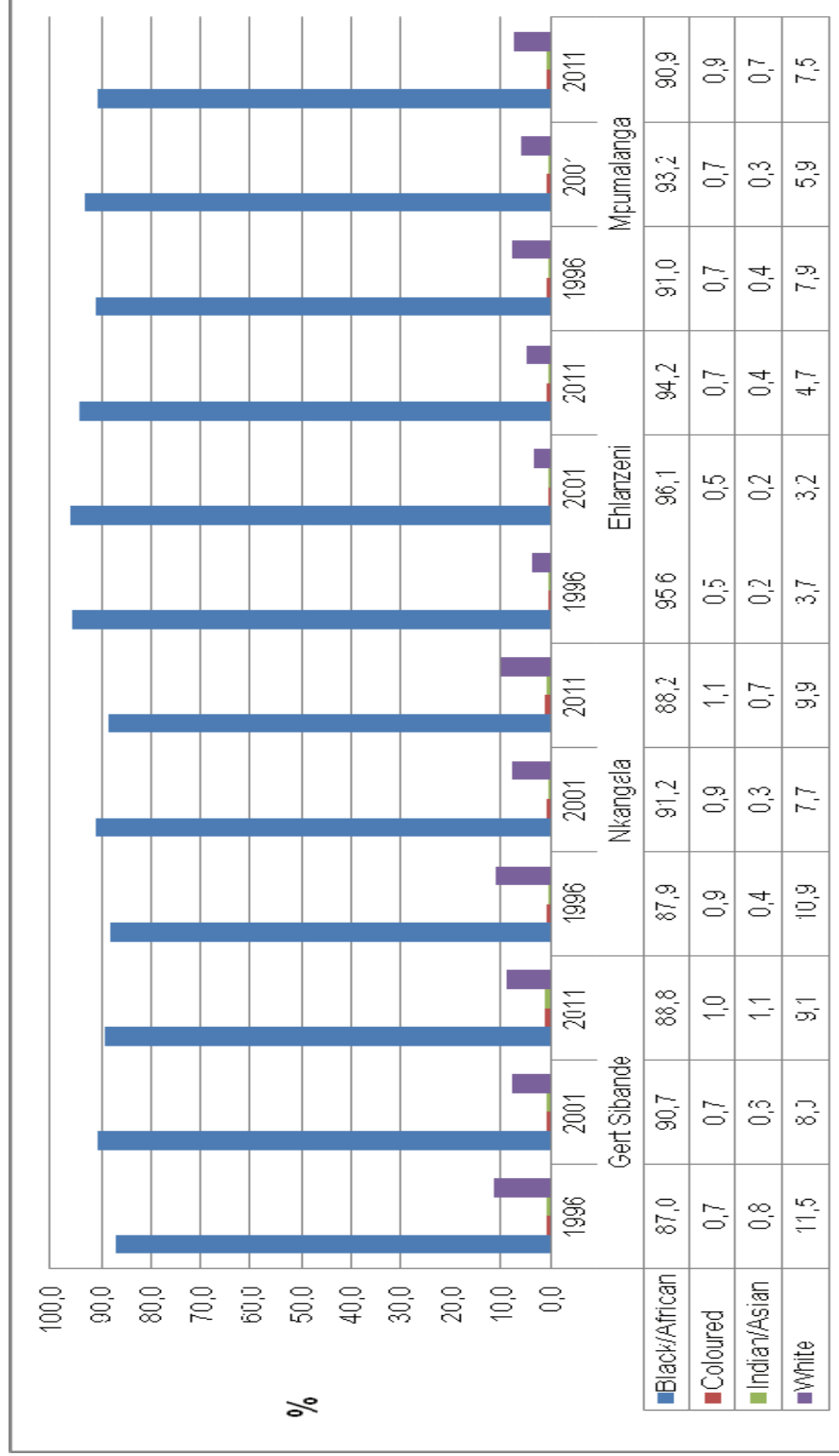


Figure 8.1.4.1 shows that 90,9% of the population in Mpumalanga were Black African in 2011, with Ehlanzeni district consistently having the highest concentration of Black Africans compared to the other districts. It however, has the lowest concentration of White population compared to the rest of the province (4,7%). A marginal increase has been seen in the proportion of the Indians/ Asian population in the province.

8.1.5 Population by functional age group

Figure 8.1.5.1: Distribution of the population by functional age groups and district municipality – 1996, 2001 and 2011

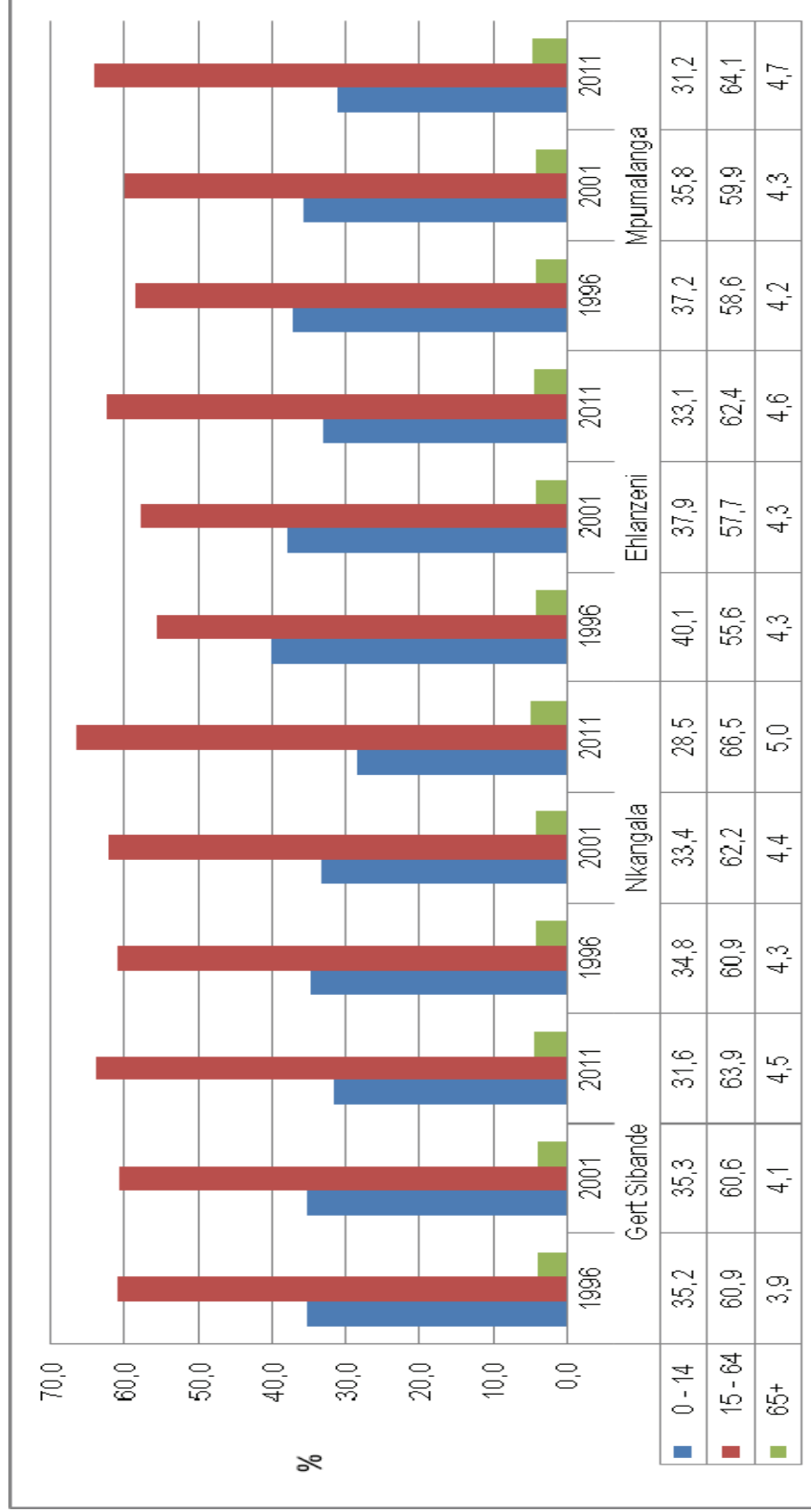


Figure 8.1.5.1 shows a consistent decline in the proportion of the population aged 0–14; an increase in the proportion of those aged 15–64 and 65+.

8.1.6 Dependency ratios

Figure 8.1.6.1: Dependency ratios by district municipality – 1996, 2001 and 2011



Figure 8.1.6.1: illustrates that the dependency ratio in Mpumalanga has decreased from 70,7% in 1996 to 67,0% in 2001, and then to 56,0% in 2011; indicating a movement in the age distribution structure towards a larger labour force.

8.1.7 Marital status

Figure 8.1.7.1: Distribution of the population by marital status and district municipality – 1996, 2001 and 2011

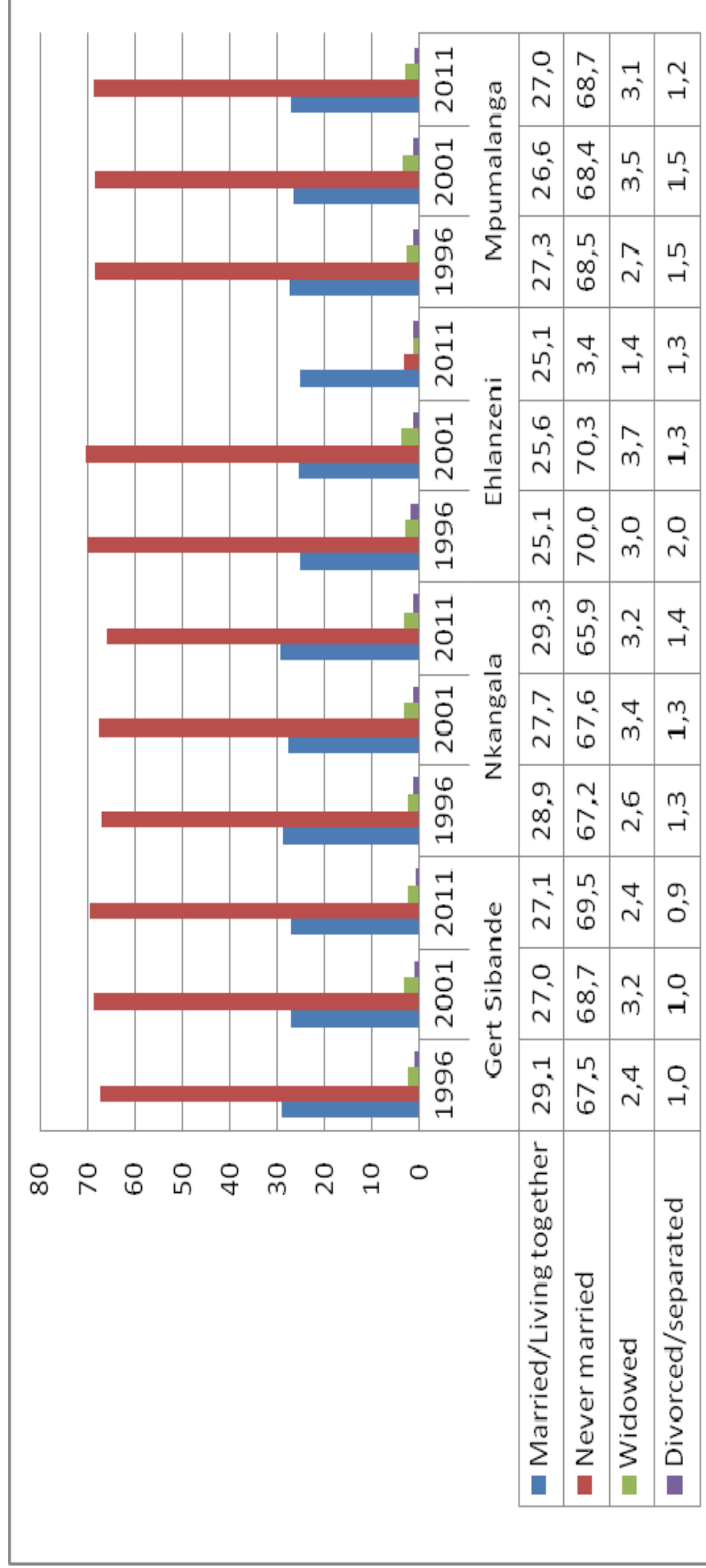


Figure 8.1.7.1 shows an increase in the proportion of the population who has never married except in Nkangala.

8.2 Education

8.2.1 Highest level of education attained

Figure 8.2.1.1: Distribution of the population aged 20 years and older by highest level of education attained and district municipality – 1996, 2001 and 2011

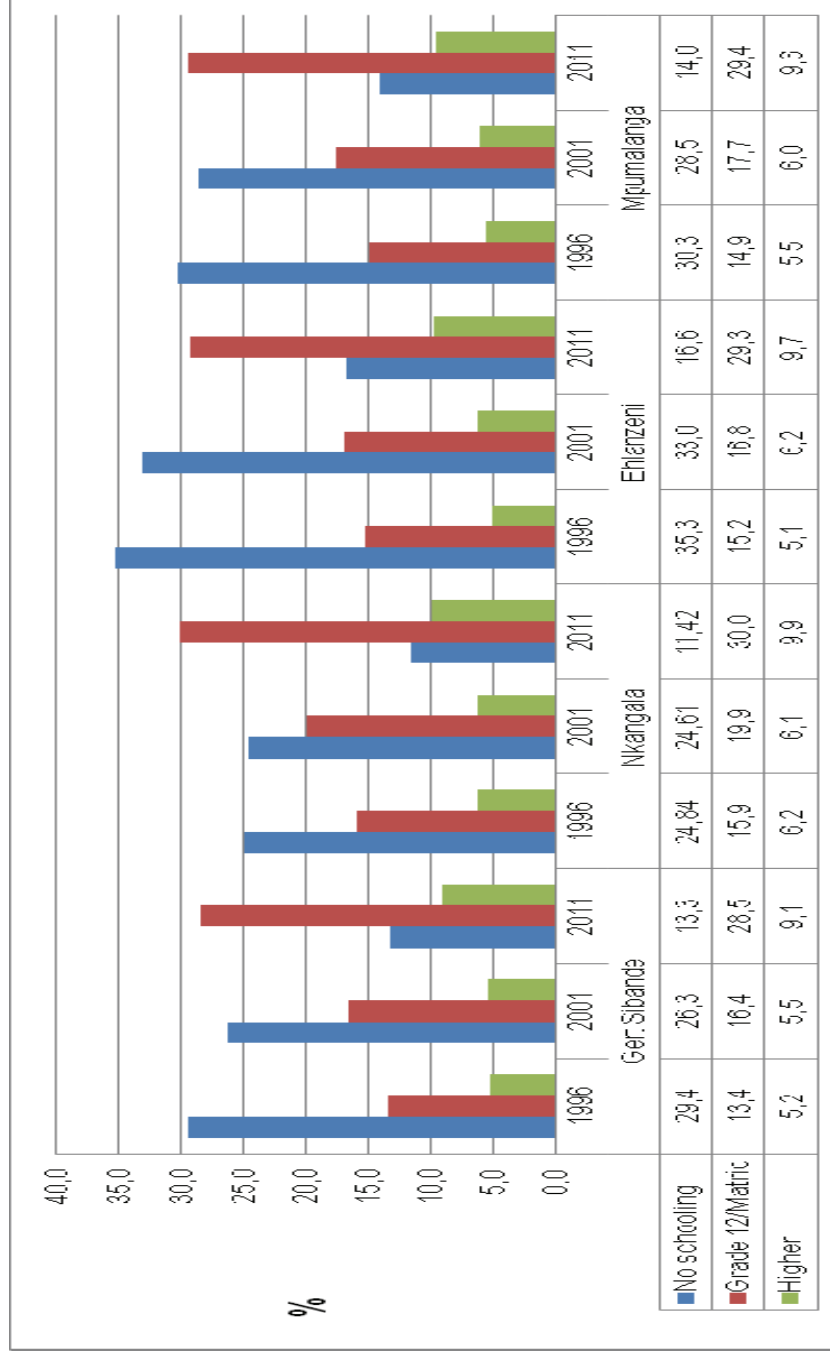


Figure 8.2.1.1 shows an increase in the proportion of the population that completed Grade 12/ Matric and with higher education and a decline in the population with no schooling in the province.

8.2.2 School attendance

Figure 8.2.2.1: Distribution of the population aged between 5 and 24 years by school attendance and district municipality – 1996, 2001 and 2011

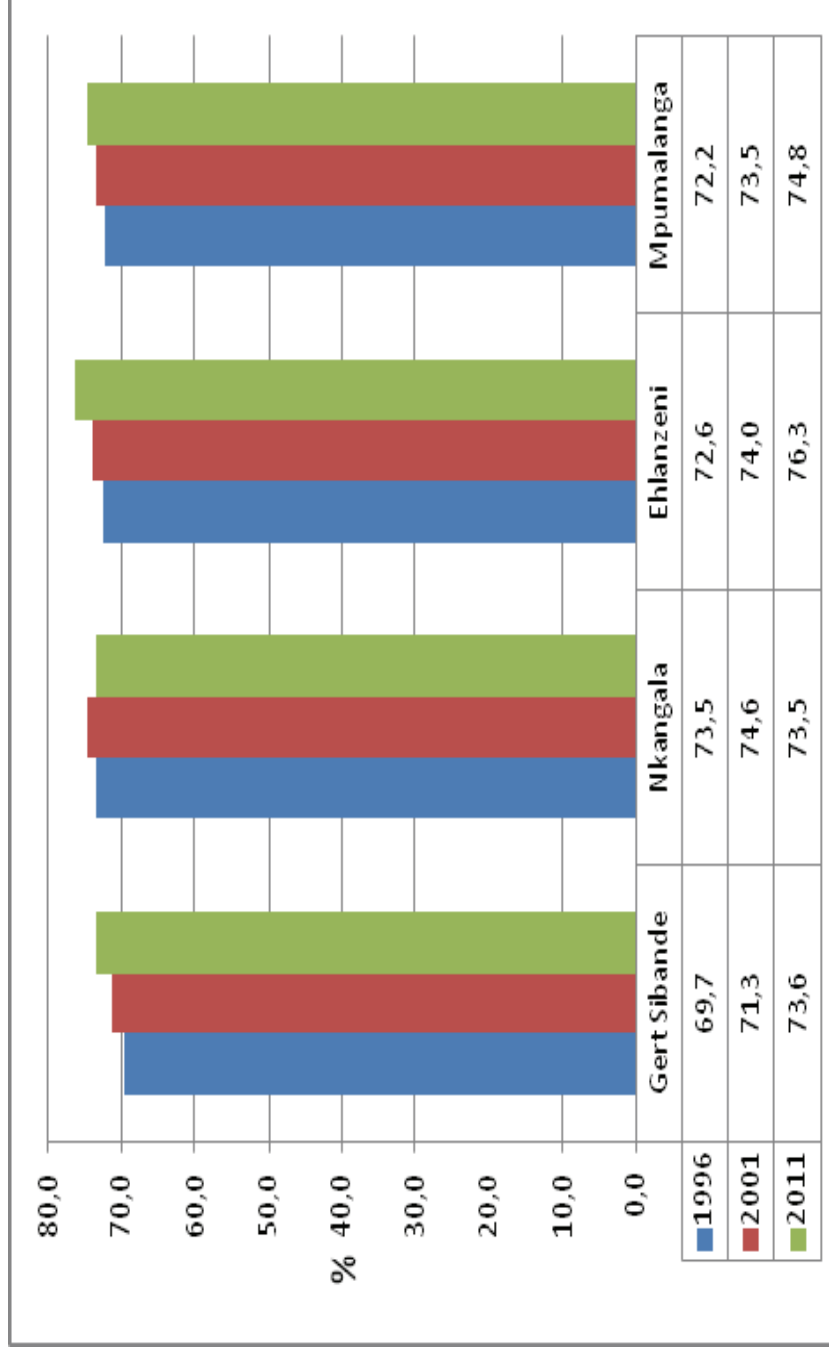
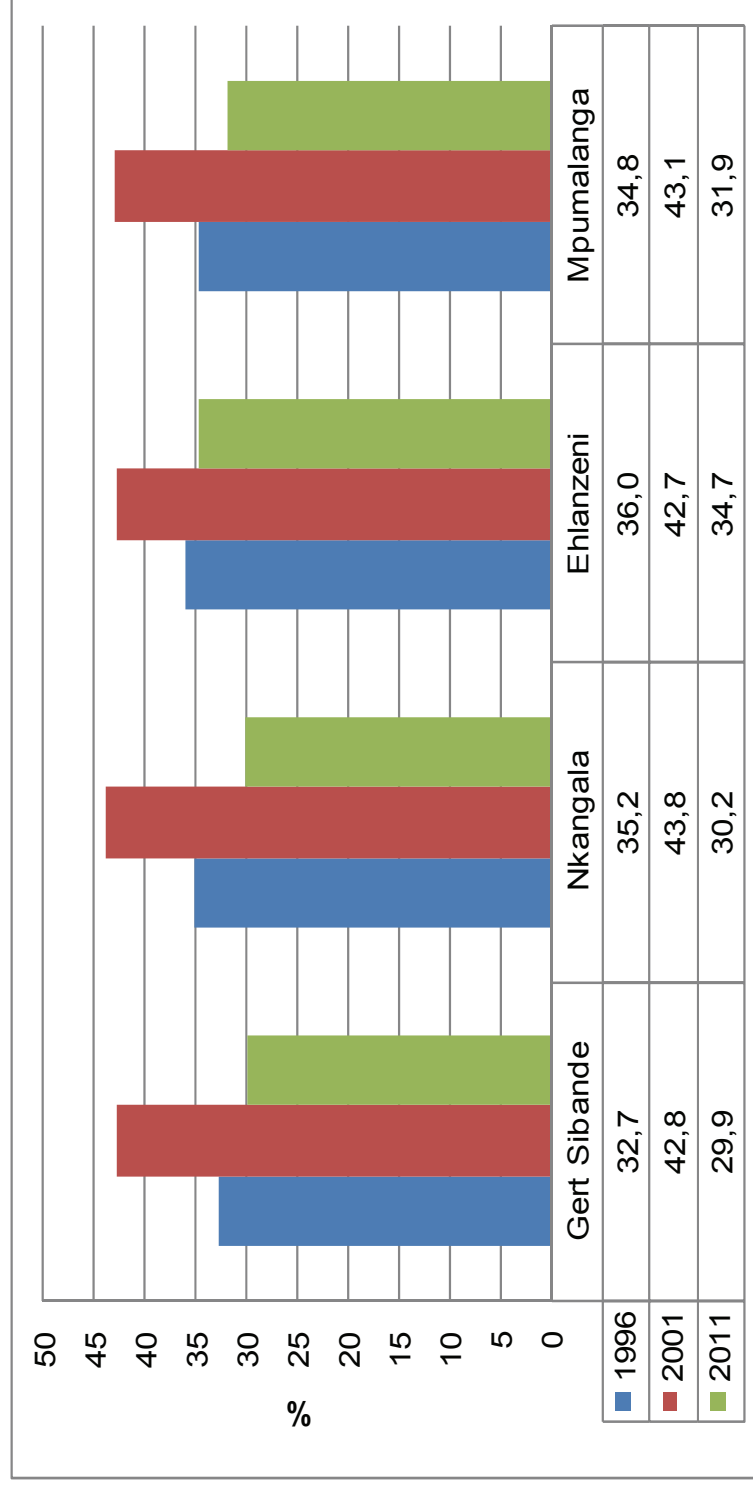


Figure 8.2.2.1 shows a slight increase in the proportion of people attending school except in Nkwangala.

8.3 Labour market

8.3.1 Unemployment rate

Figure 8.3.1.1: Unemployment rate (official definition) by district municipality – 1996, 2001 and 2011



Trends in unemployment rate as shown by Figure 8.3.1.1 suggest an increase in the unemployment rate between 1996 and 2001 and thereafter a decline across districts. **Readers are requested to heed the disclaimer in the introduction to this publication.**

8.4 Housing

8.4.1 Average household size

Figure 8.4.1.1: Average household size by district municipality – 1996, 2001 and 2011

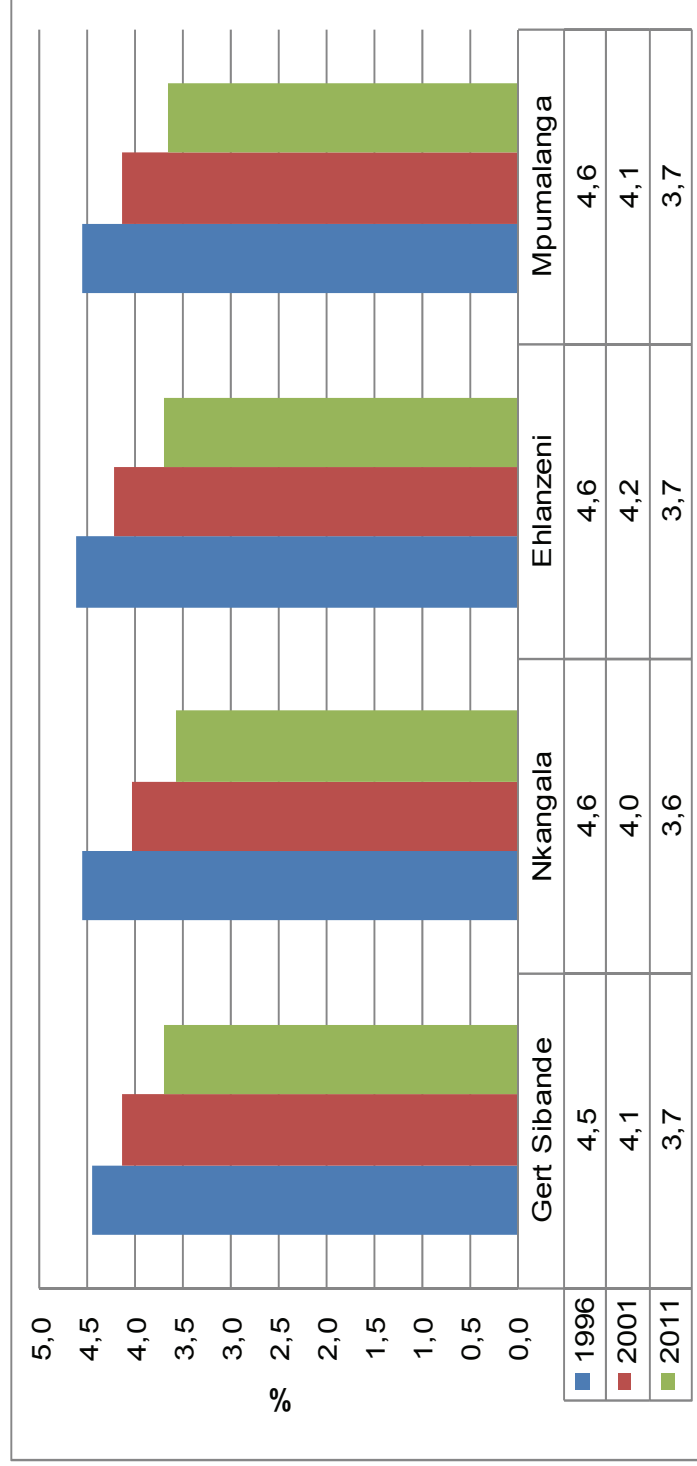


Figure 8.4.1.1 shows a decline in average household size over time and there is not much variation between the districts.

8.4.2 Type of main dwelling

Figure 8.4.2.1: Distribution of households by type of main dwelling and district municipality – 1996, 2001 and 2011

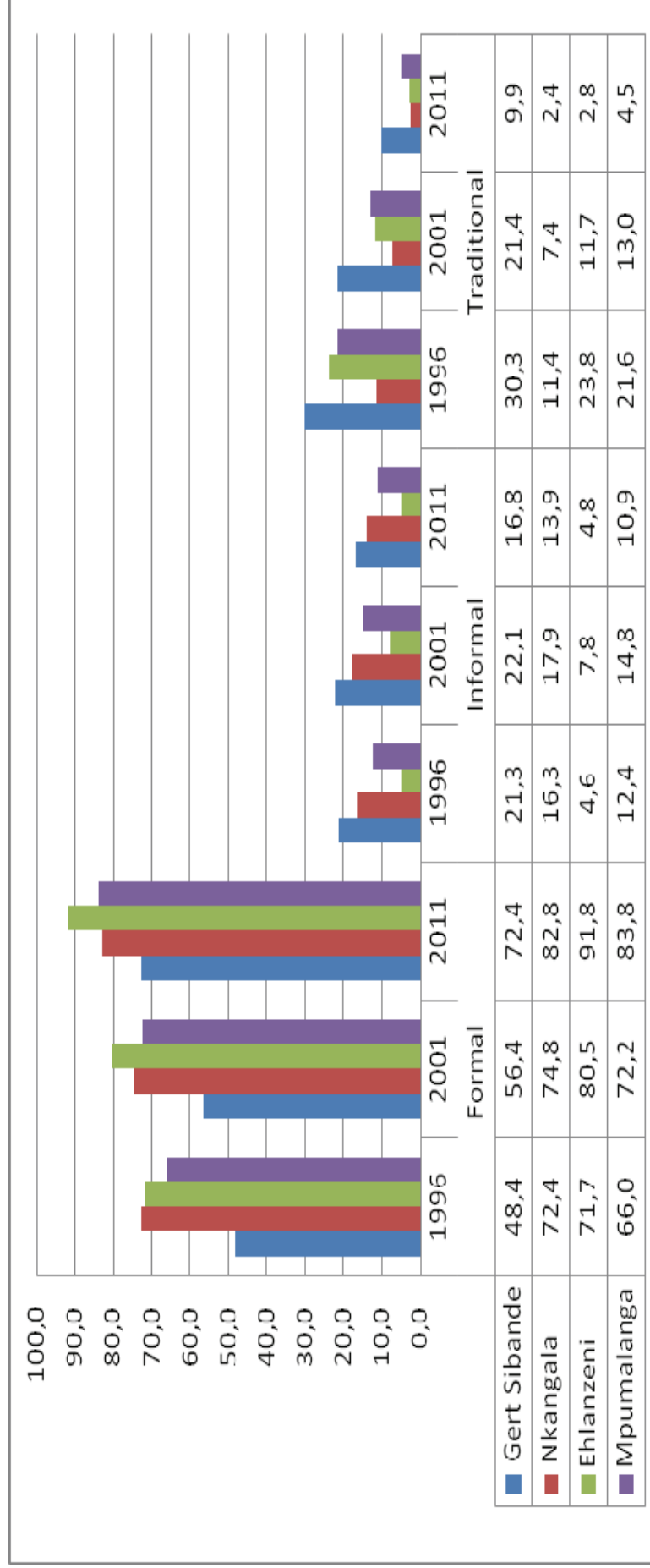
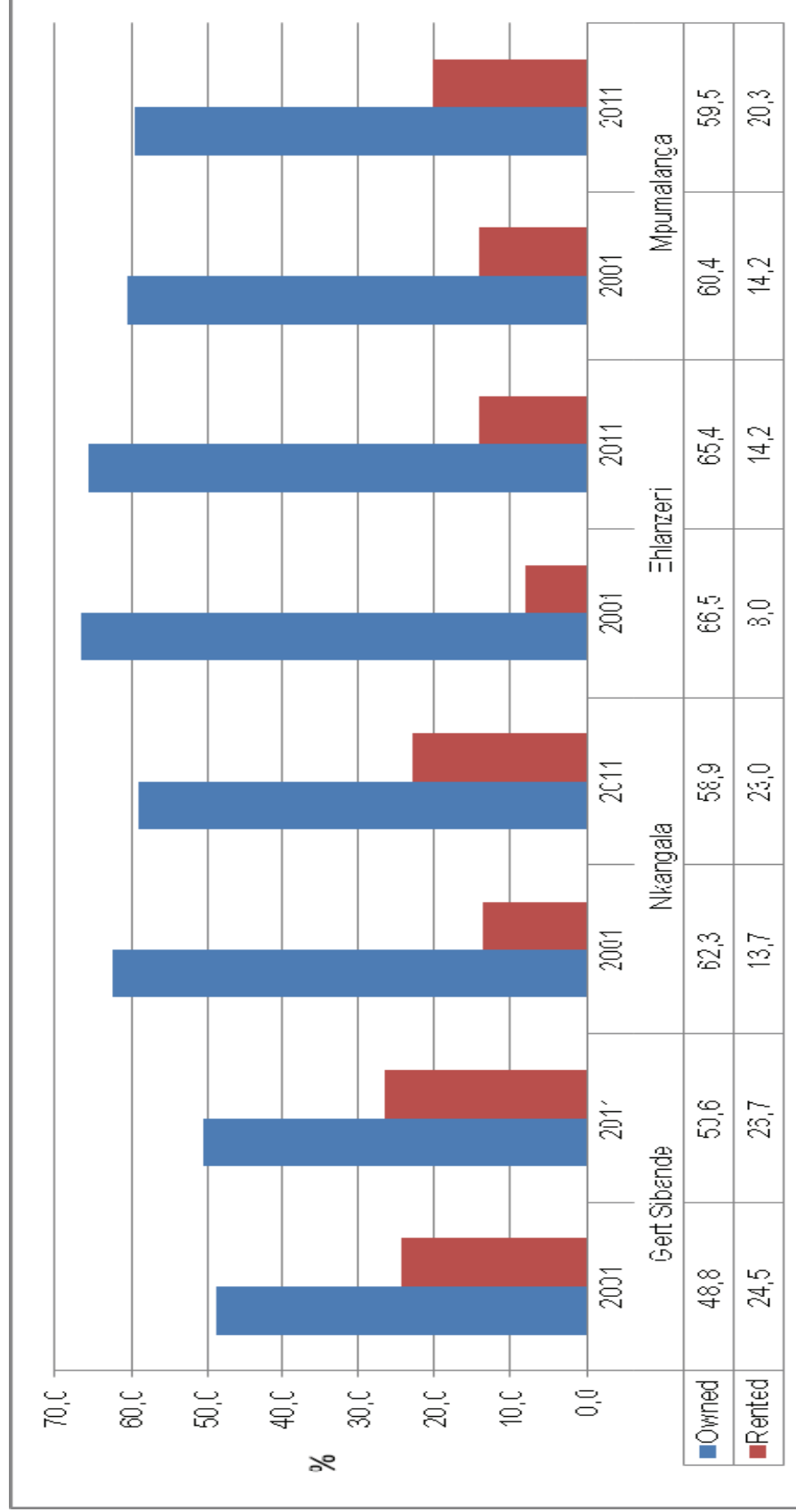


Figure 8.4.2.1 shows a significant increase in the proportion of households residing in formal dwellings across the province, alongside is the decline in informal and traditional dwellings.

8.4.3 Tenure status

Figure 8.4.3.1: Distribution of households by tenure status and district municipality - 2001 and 2011



*Owned refers to fully paid off and not yet paid off dwelling units.

Figure 8.4.3.1 shows a decline in the proportion of households that own their dwellings except in Gert Sibende. On the other hand there is an increase in the proportion of households renting their property in the province.

8.4.4 Household goods

Figure 8.4.4.1: Distribution of households who own a radio, television, computer, refrigerator, landline/ telephone, cell-phone, landline/ telephone, computer, refrigerator, landline/ telephone, cell-phone and access to internet by district municipality – 2001 and 2011

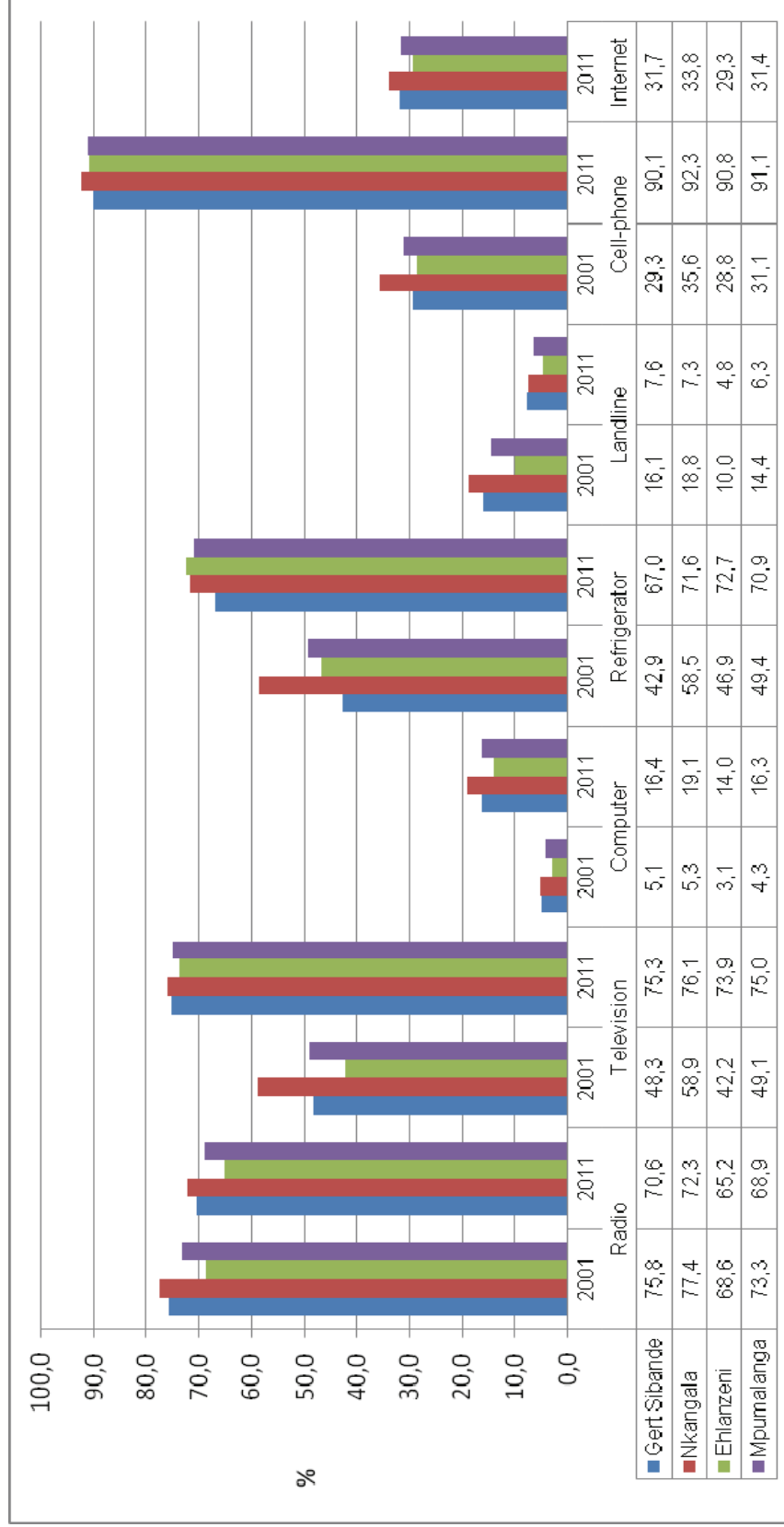


Figure 8.4.4.1 shows a decline in the proportion of households owning radios, landline/telephone and an increase in households owning televisions, computers, refrigerators and cellphones from 2001 to 2011. The proportion of households with access to internet is around 30% across the province.

8.4.5 Electricity for lighting, cooking and heating

Figure 8.4.5.1: Distribution of households using electricity for lighting, cooking and heating by district municipality – 1996, 2001 and 2011

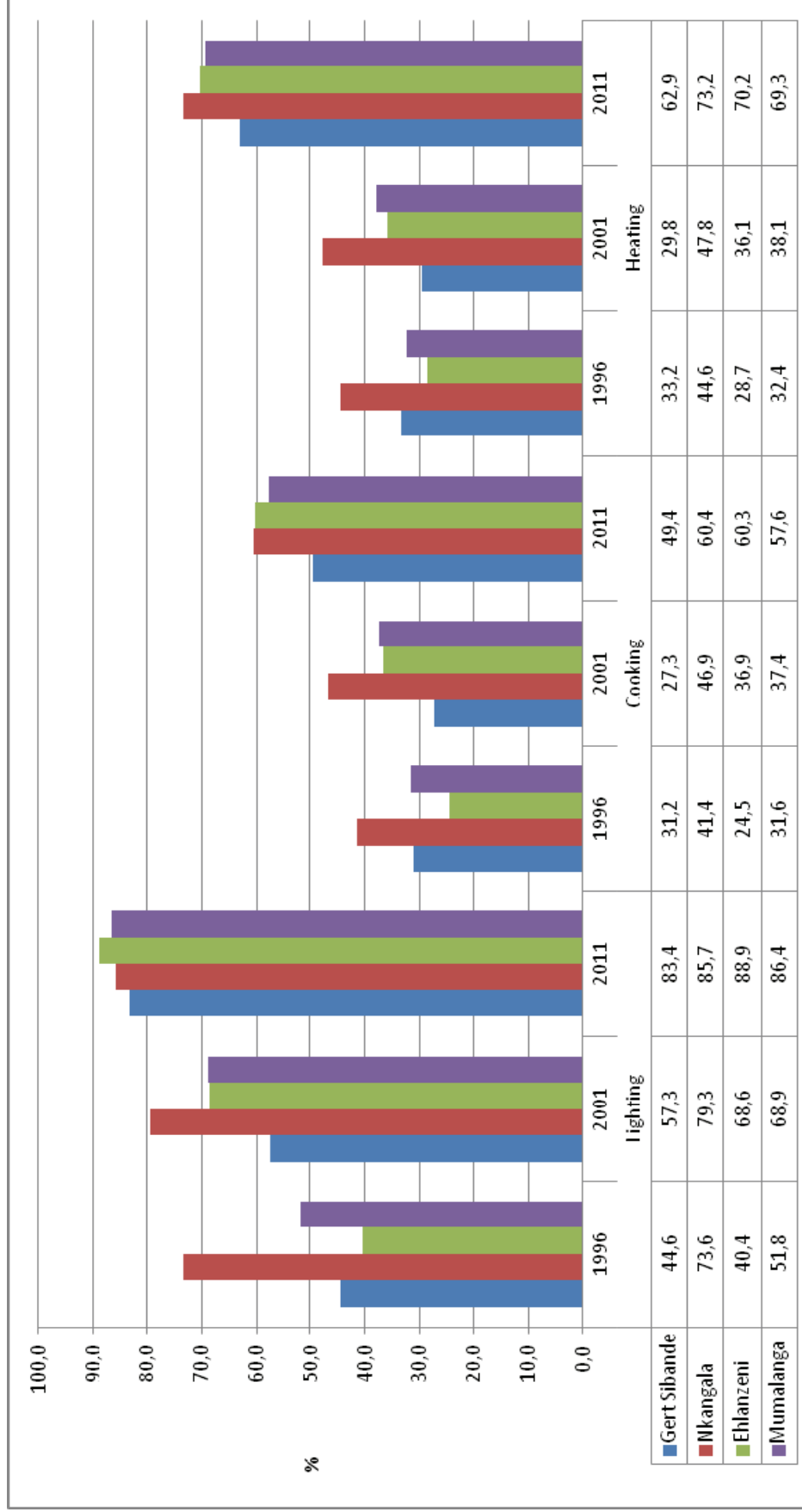


Figure 8.4.5.1 shows that the proportion of households using electricity as the main source of energy for lighting, heating and cooking increased significantly across the province.

8.4.6 Access to piped water

Figure 8.4.6.1: Distribution of households having access to piped water by district municipality – 1996, 2001 and 2011

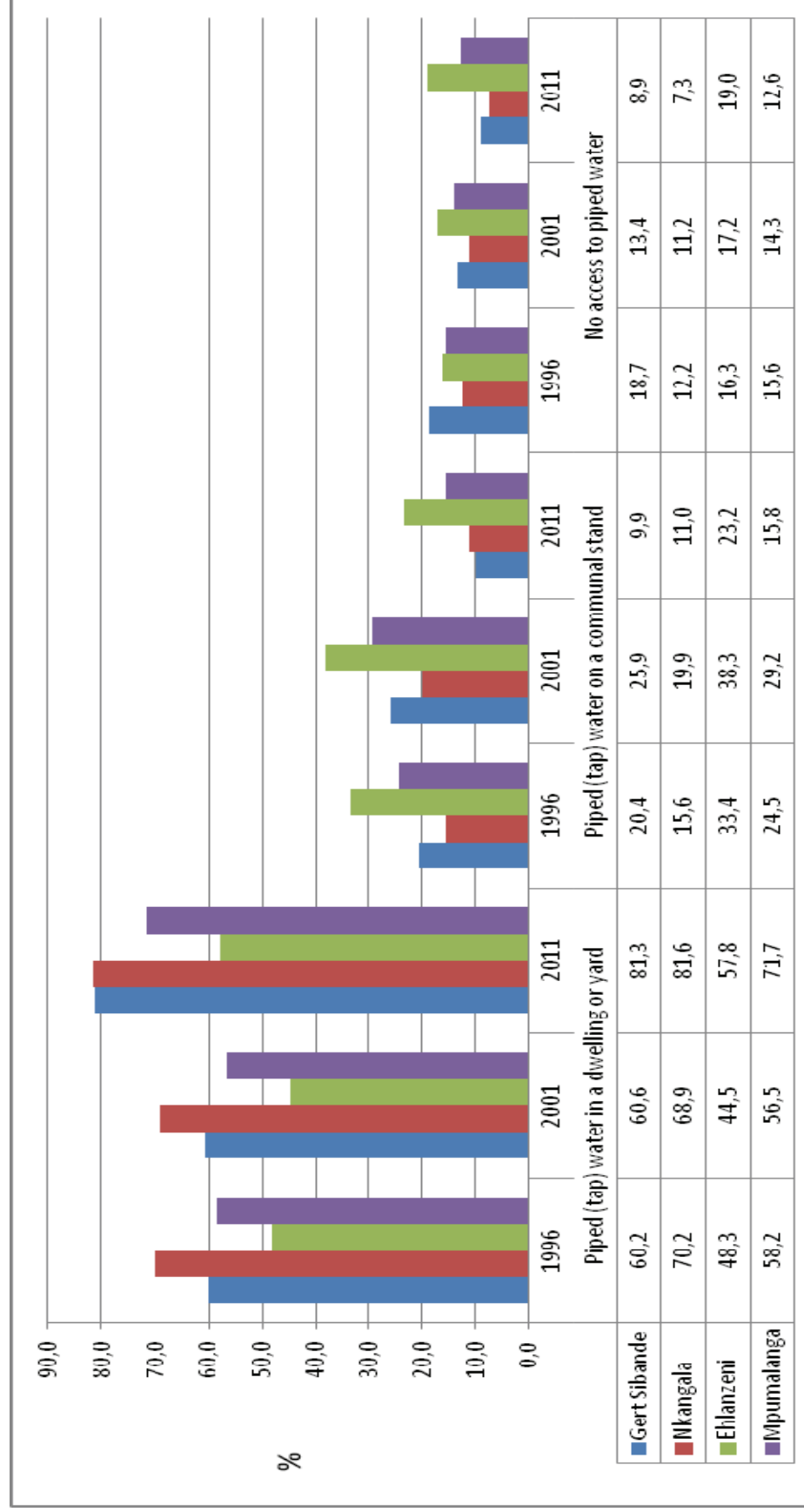


Figure 8.4.6.1 shows an increase, in the proportion of households having access to piped water in their dwelling or yard. Alongside, is the decline in the proportion of households having access to piped water on a communal stand or no access to piped water except in Ehlanzeni district which saw an increase over time. The proportion of households having access to piped water on a communal stand increased from 1996 to 2001 and in 2011 shows a decline.

8.4.7 Refuse disposal

Figure 8.4.7.1: Distribution of households by type of refuse removal and district municipality – 1996, 2001 and 2011

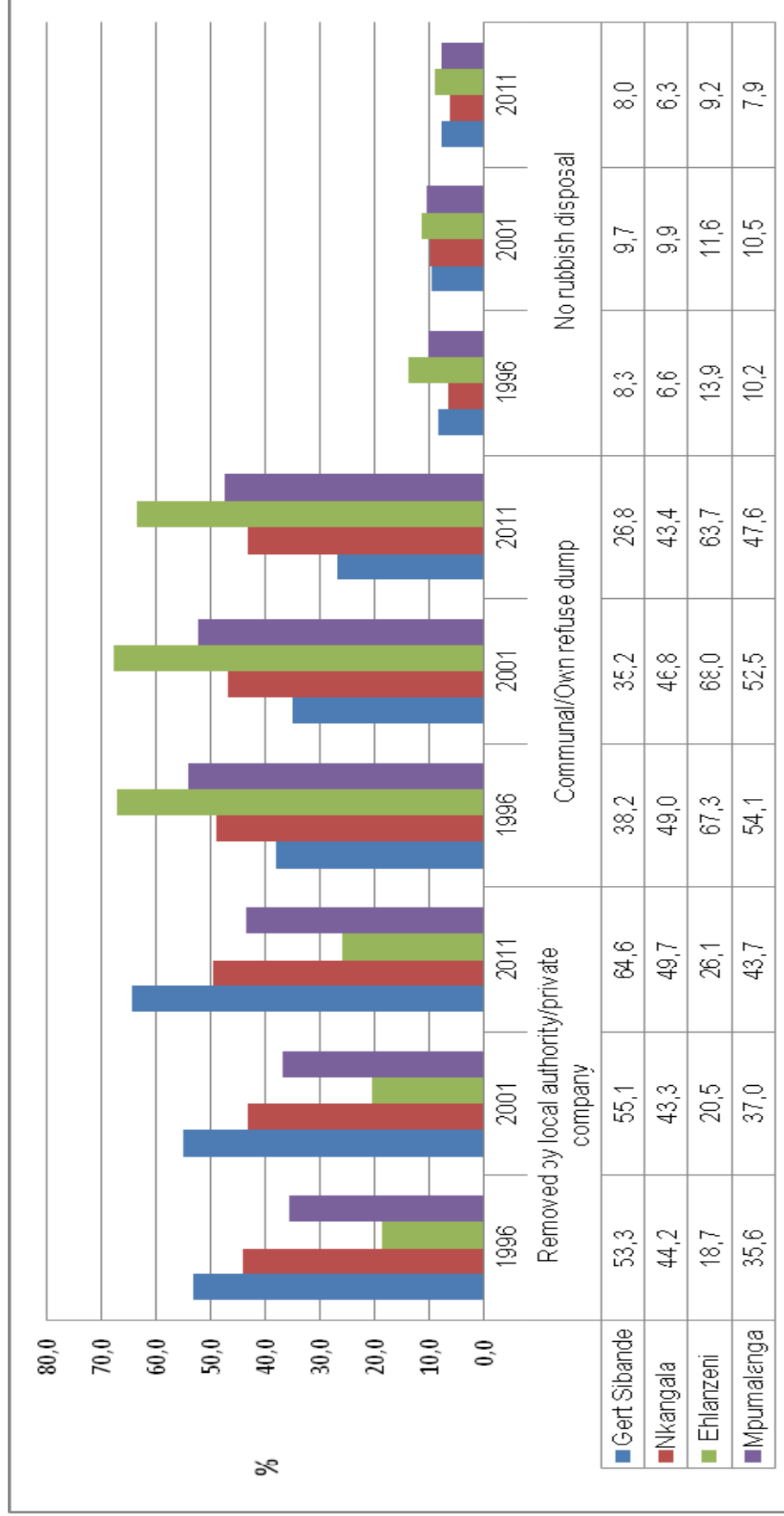


Figure 8.4.7.1 shows that there is an increase in the proportion of households whose refuse is removed by local authority or private company in all districts. Alongside is the decline in the proportion of households with communal or own refuse dump or no rubbish disposal.

8.4.8 Toilet facilities

Figure 8.4.8.1: Distribution of households by type of toilet facility and district municipality – 1996, 2001 and 2011

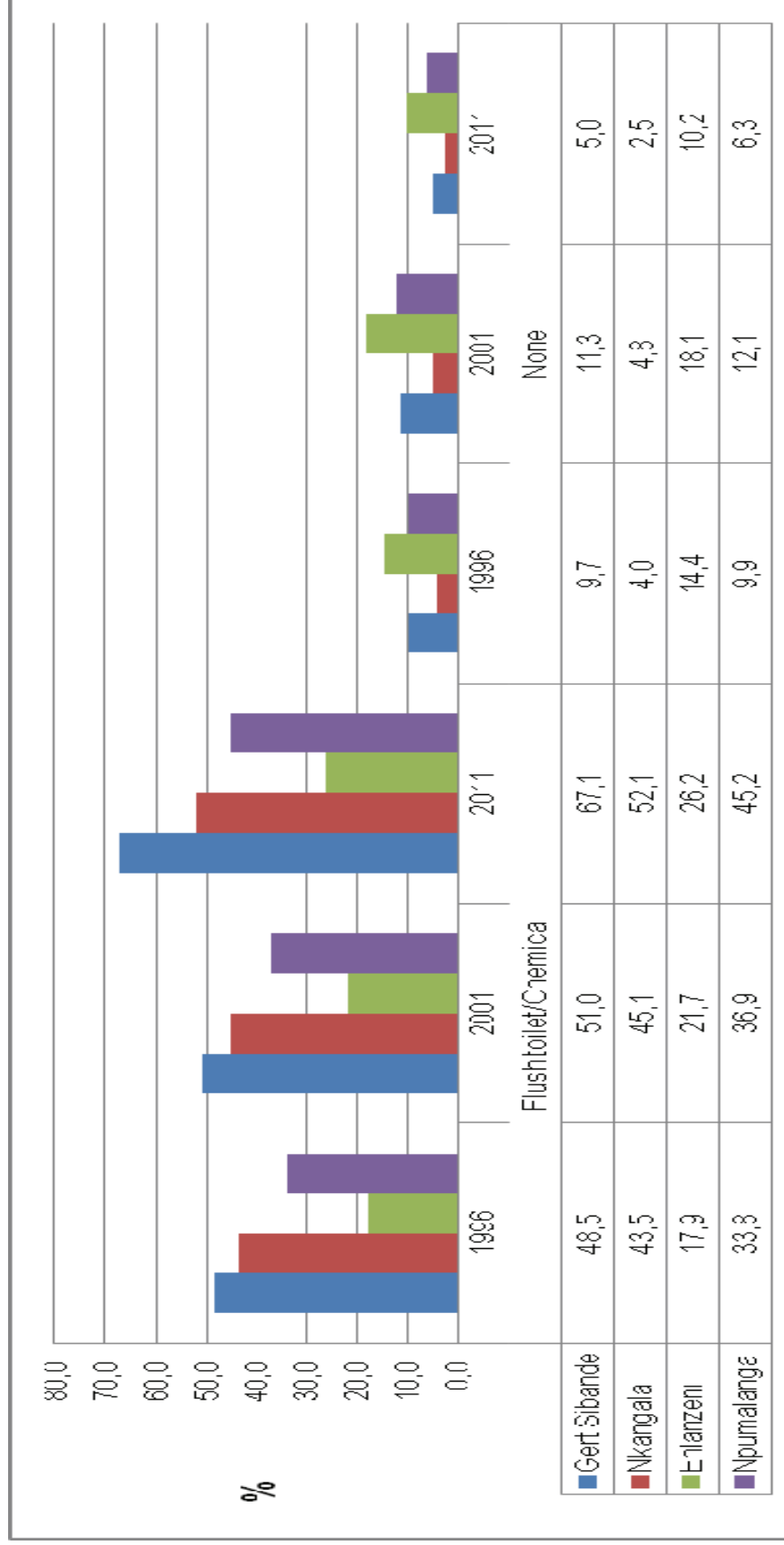


Figure 8.4.8.1 shows an increase in the proportion of households with flush or chemical toilets. Only about a quarter of the households use flush/ chemical toilets in Ehlanzeni while in Gert Sibande, which has the highest proportion; has a third of the households using flush/ chemical toilets in 2011. The graph also suggests a decline in the proportion of households with no toilet facilities.

8.4.9 Average household income

Figure 8.4.9.1: Distribution of average household income by district municipality – 2001 and 2011

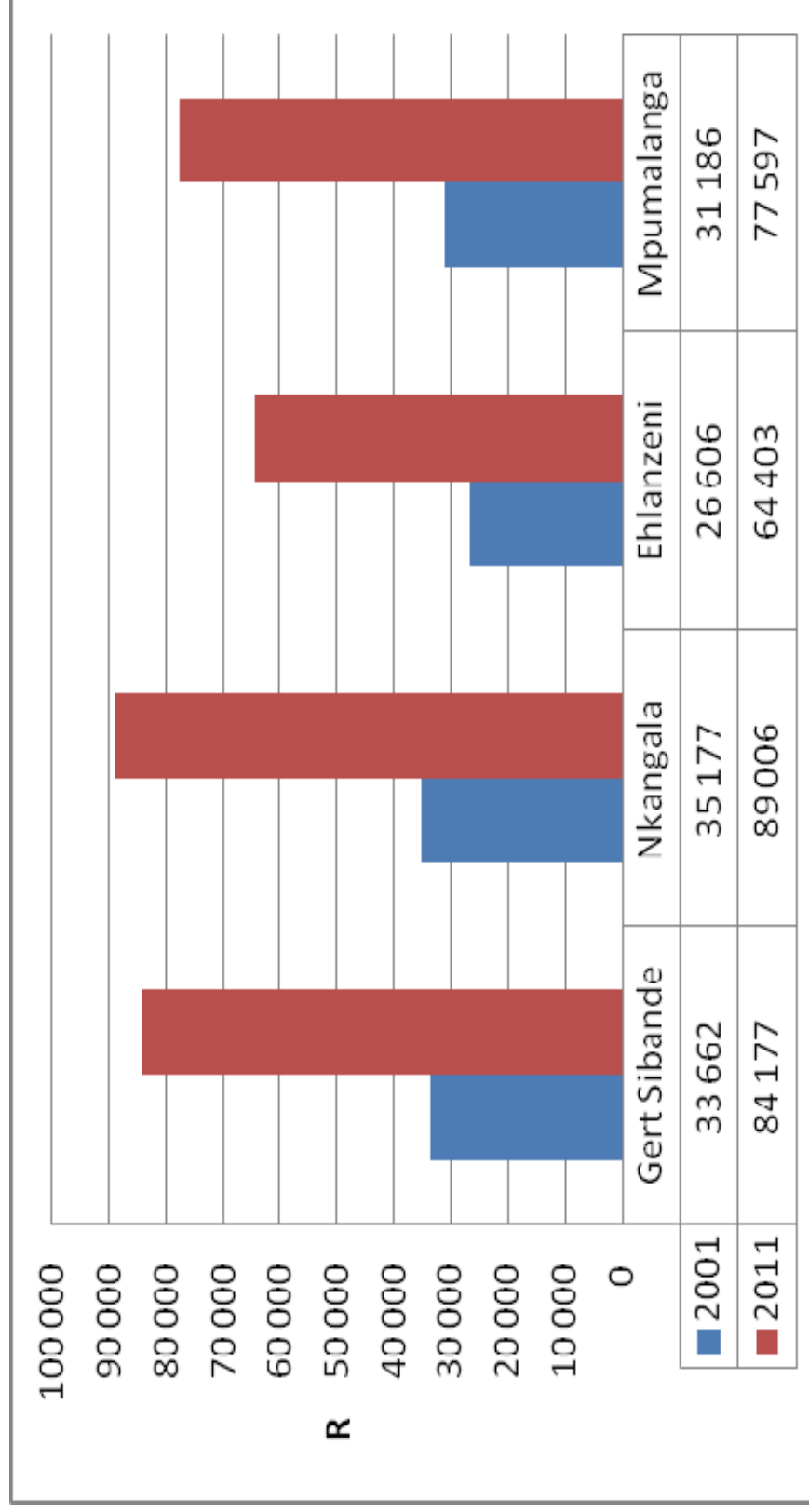


Figure 8.4.9.1 shows a more than 100% increase in average household income in the province.

8.4.10 Female headed households

Figure 8.4.10.1: Distribution of female headed households by district municipality – 1996, 2001 and 2011



Figure 8.4.10.1 shows an increase in the proportion of households headed by females in 2001 and a decline thereafter.

8.4.11 Child headed households

Figure 8.4.11.1: Distribution of child headed households by district municipality – 1996, 2001 and 2011

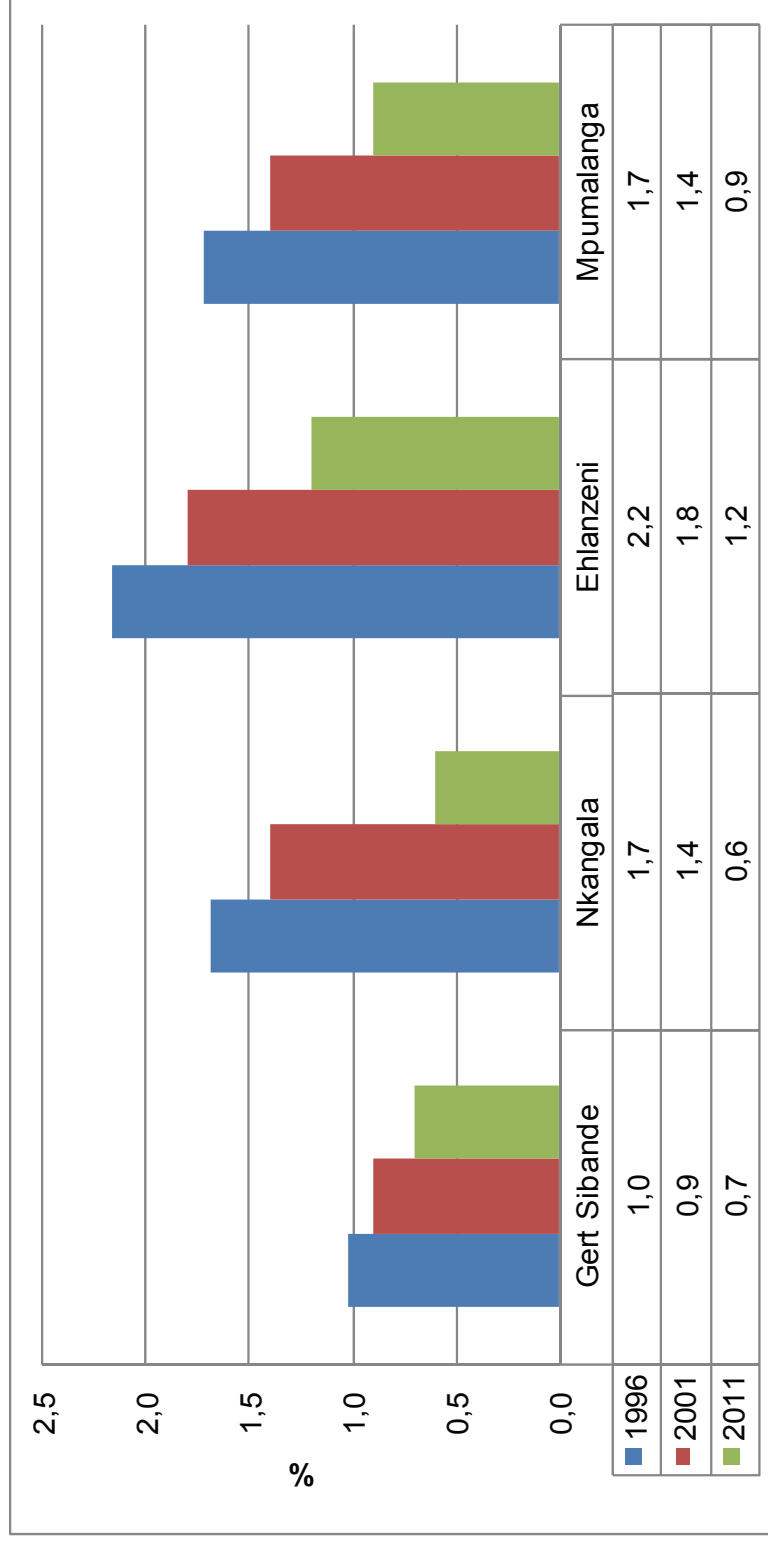


Figure 8.4.11.1 shows that the proportion of households headed by children has declined over time. Ehlanzeni has the highest proportion of child headed households.

Appendix

Age and sex structure – DC30: Gert Sibande

Table 8.1.1.1: Distribution of the population by age and sex; Albert Luthuli municipality – 1996, 2001 and 2011

MP301: Albert Luthuli	1996			2001			2011		
	Male	Female	Total	Male	Female	Total	Male	Female	Total
	0-4	11 854	12 282	24 135	11 404	11 336	22 740	11 877	11 537
5-9	13 200	13 355	26 554	12 787	12 848	25 635	11 183	11 153	22 336
10-14	13 216	13 443	26 659	13 751	14 110	27 861	11 179	10 873	22 052
15-19	10 599	11 575	22 173	13 172	13 326	26 498	11 818	11 745	23 563
20-24	7 749	9 482	17 231	7 201	8 731	15 932	9 015	9 704	18 719
25-29	5 131	7 025	12 155	4 774	6 945	11 719	6 874	7 828	14 702
30-34	4 308	6 066	10 374	4 191	6 073	10 264	4 688	5 455	10 143
35-39	3 542	4 964	8 505	3 891	5 723	9 614	3 908	4 908	8 816
40-44	3 045	4 247	7 292	3 239	4 774	8 013	3 385	4 813	8 198
45-49	2 444	3 292	5 736	2 797	4 057	6 854	2 980	4 471	7 452
50-54	1 870	2 275	4 145	2 231	3 187	5 418	2 627	3 934	6 561
55-59	1 544	2 280	3 824	1 754	2 295	4 049	2 244	3 499	5 743
60-64	1 158	2 062	3 219	1 562	2 534	4 096	1 788	2 657	4 444
65-69	1 206	1 817	3 023	1 051	1 828	2 879	1 309	1 787	3 096
70-74	753	1 057	1 810	979	1 509	2 488	1 001	1 697	2 698
75-79	765	1 300	2 065	507	826	1 333	535	1 132	1 667
80-84	327	442	769	557	1 030	1 587	405	836	1 240
85+	228	358	586	295	472	767	372	795	1 166
Total	82 938	97 320	180 258	86 143	101 604	187 747	87 188	98 824	186 010

Table 8.1.1.2: Distribution of the population by age and sex; Msukaligwa municipality – 1996, 2001 and 2011

MP302: Msukaligwa	1996			2001			2011		
	Male	Female	Total	Male	Female	Total	Male	Female	Total
	0-4	5 695	5 944	11 639	6 899	7 006	13 905	8 301	8 273
5-9	5 863	6 039	11 902	7 371	7 378	14 749	7 590	7 271	14 861
10-14	6 006	6 116	12 123	7 437	7 475	14 912	7 030	6 944	13 974
15-19	5 366	5 477	10 843	6 977	7 139	14 116	7 532	7 542	15 073
20-24	4 669	5 138	9 806	5 125	5 933	11 058	8 089	7 908	15 997
25-29	4 628	4 719	9 347	4 795	5 609	10 404	7 969	7 520	15 489
30-34	4 214	4 188	8 402	4 314	4 700	9 014	5 829	5 359	11 188
35-39	4 041	3 634	7 676	4 061	4 305	8 366	4 794	4 741	9 535
40-44	3 216	3 020	6 236	3 394	3 655	7 049	4 125	4 191	8 316
45-49	2 529	2 226	4 755	2 736	2 962	5 698	3 427	3 921	7 348
50-54	1 747	1 613	3 361	2 297	2 378	4 675	3 001	3 238	6 239
55-59	1 354	1 357	2 712	1 532	1 516	3 048	2 417	2 673	5 090
60-64	946	1 106	2 052	1 180	1 523	2 703	1 656	1 970	3 625
65-69	725	909	1 635	759	1 049	1 808	969	1 192	2 160
70-74	441	571	1 012	564	812	1 376	649	1 082	1 731
75-79	330	510	841	333	541	874	365	638	1 004
80-84	133	223	356	240	454	694	223	438	661
85+	103	143	246	116	242	358	148	363	511
Total	52 005	52 935	104 941	60 130	64 677	124 807	74 114	75 264	149 377

Table 8.1.1.3: Distribution of the population by age and sex; Mkhondo municipality – 1996, 2001 and 2011

MP303: Mkhondo	1996			2001			2011		
	Male	Female	Total	Male	Female	Total	Male	Female	Total
0-4	5 745	5 721	11 466	9 218	9 414	18 632	10 949	10 737	21 686
5-9	6 228	6 396	12 624	9 161	9 098	18 259	10 423	10 657	21 081
10-14	6 307	6 534	12 841	9 842	9 798	19 640	10 113	10 043	20 156
15-19	5 628	5 704	11 332	8 883	9 275	18 158	9 980	9 946	19 926
20-24	4 491	5 288	9 779	5 733	6 260	11 993	8 452	9 006	17 458
25-29	4 171	4 607	8 778	4 965	5 829	10 794	7 192	7 371	14 564
30-34	3 546	3 874	7 420	4 264	4 908	9 172	5 145	5 406	10 551
35-39	2 999	3 045	6 044	3 846	4 549	8 395	4 562	5 079	9 641
40-44	2 497	2 513	5 009	2 941	3 800	6 741	3 822	4 350	8 172
45-49	1 774	1 838	3 612	2 510	3 085	5 595	3 093	4 180	7 273
50-54	1 284	1 319	2 603	1 933	2 229	4 162	2 449	3 343	5 792
55-59	1 029	1 269	2 298	1 309	1 592	2 901	2 060	2 768	4 828
60-64	766	969	1 735	1 172	1 778	2 950	1 512	2 064	3 576
65-69	630	964	1 594	762	1 185	1 947	905	1 552	2 457
70-74	441	544	985	552	1 072	1 624	741	1 368	2 109
75-79	323	469	792	349	527	876	362	743	1 104
80-84	138	192	330	296	502	798	273	666	939
85+	88	141	229	176	262	438	232	439	671
Total	48 083	51 388	99 471	67 912	75 163	143 075	82 265	89 718	171 984

Table 8.1.1.4: Distribution of the population by age and sex; Pixley Ka Seme municipality – 1996, 2001 and 2011

MP304: Pixley Ka Seme	1996			2001			2011		
	Male	Female	Total	Male	Female	Total	Male	Female	Total
	0-4	3 591	3 814	7 405	4 899	5 004	9 903	5 126	5 077
5-9	4 421	4 568	8 989	4 974	5 152	10 126	4 679	4 804	9 483
10-14	4 387	4 554	8 941	5 450	5 689	11 139	4 756	4 608	9 364
15-19	3 894	4 012	7 907	4 938	5 089	10 027	4 548	4 627	9 175
20-24	3 099	3 390	6 490	3 267	3 701	6 968	3 889	4 066	7 955
25-29	2 401	2 808	5 209	2 609	2 997	5 606	3 158	3 332	6 490
30-34	2 130	2 477	4 607	1 994	2 644	4 638	2 433	2 617	5 049
35-39	1 938	2 133	4 071	2 014	2 543	4 557	2 130	2 331	4 461
40-44	1 689	1 708	3 397	1 605	2 139	3 744	1 718	2 298	4 016
45-49	1 274	1 455	2 729	1 490	1 835	3 325	1 615	2 196	3 811
50-54	963	1 047	2 010	1 235	1 462	2 697	1 469	1 842	3 311
55-59	841	1 029	1 869	881	1 045	1 926	1 198	1 700	2 898
60-64	603	862	1 466	807	1 133	1 940	991	1 294	2 285
65-69	531	764	1 295	576	844	1 420	658	980	1 638
70-74	354	467	821	396	811	1 207	528	779	1 307
75-79	325	481	806	288	398	686	306	497	803
80-84	179	212	390	187	390	577	178	359	537
85+	93	141	234	78	172	250	140	310	450
Total	32 712	35 923	68 635	37 688	43 048	80 736	39 520	43 717	83 236

Table 8.1.1.5: Distribution of the population by age and sex; Lekwa municipality – 1996, 2001 and 2011

MP305: Lekwa	1996			2001			2011		
	Male	Female	Total	Male	Female	Total	Male	Female	Total
0-4	4 325	4 518	8 842	5 267	5 396	10 663	6 030	5 990	12 021
5-9	4 958	4 819	9 777	5 361	5 451	10 812	5 279	5 277	10 556
10-14	5 093	5 127	10 220	5 961	5 700	11 661	5 332	5 176	10 508
15-19	4 771	4 771	9 542	5 775	5 921	11 696	5 556	5 528	11 084
20-24	4 413	4 527	8 940	4 489	4 652	9 141	6 285	5 387	11 671
25-29	4 041	4 016	8 056	4 495	4 562	9 057	5 606	5 311	10 917
30-34	3 668	3 678	7 346	3 856	3 960	7 816	4 477	4 196	8 673
35-39	3 291	3 088	6 378	3 453	3 714	7 167	3 917	3 907	7 825
40-44	2 483	2 503	4 986	3 213	3 187	6 400	3 360	3 443	6 804
45-49	2 023	1 905	3 927	2 464	2 505	4 969	2 968	3 443	6 411
50-54	1 549	1 550	3 099	2 018	1 977	3 995	2 674	2 917	5 591
55-59	1 191	1 294	2 485	1 417	1 548	2 965	2 322	2 234	4 556
60-64	808	1 061	1 869	1 118	1 384	2 502	1 504	1 749	3 253
65-69	690	869	1 559	627	959	1 586	990	1 247	2 237
70-74	424	511	935	526	764	1 290	627	978	1 606
75-79	327	408	735	278	412	690	335	604	939
80-84	134	232	366	189	325	514	229	373	602
85+	92	176	268	119	220	339	157	253	409
Total	44 279	45 051	89 330	50 626	52 637	103 263	57 648	58 013	115 663

Table 8.1.1.6: Distribution of the population by age and sex; Dipaleseng municipality – 1996, 2001 and 2011

MP306: Dipaleseng	1996			2001			2011		
	Male	Female	Total	Male	Female	Total	Male	Female	Total
0-4	1 913	1 884	3 797	2 012	1 943	3 955	2 319	2 272	4 592
5-9	2 191	2 154	4 345	2 046	2 152	4 198	1 902	1 827	3 729
10-14	2 224	2 332	4 556	2 291	2 264	4 555	1 796	1 836	3 632
15-19	2 058	2 220	4 278	2 123	2 230	4 353	1 991	1 972	3 963
20-24	1 765	2 033	3 798	1 663	1 894	3 557	2 204	2 013	4 217
25-29	1 602	1 570	3 172	1 480	1 652	3 132	2 302	1 912	4 214
30-34	1 329	1 385	2 714	1 322	1 279	2 601	1 871	1 550	3 420
35-39	1 226	1 226	2 452	1 166	1 262	2 428	1 538	1 379	2 917
40-44	1 010	1 042	2 052	977	1 117	2 094	1 255	1 138	2 393
45-49	865	859	1 724	866	975	1 841	1 048	1 130	2 179
50-54	684	683	1 367	757	803	1 560	904	918	1 822
55-59	558	631	1 190	536	647	1 183	738	834	1 571
60-64	426	546	972	514	603	1 117	608	655	1 264
65-69	348	424	773	299	454	753	390	535	925
70-74	234	252	487	274	307	581	303	414	717
75-79	171	216	387	114	192	306	133	266	399
80-84	78	93	171	107	139	246	95	154	249
85+	36	70	106	55	101	156	65	121	186
Total	18 719	19 623	38 342	18 602	20 014	38 616	21 462	20 926	42 389

Table 8.1.1.7: Distribution of the population by age and sex; Govan Mbeki municipality – 1996, 2001 and 2011

MP307: Govan Mbeki	1996			2001			2011		
	Male	Female	Total	Male	Female	Total	Male	Female	Total
0-4	10 201	10 554	20 756	10 704	10 965	21 669	15 129	15 176	30 305
5-9	10 016	10 028	20 044	10 575	10 898	21 473	12 843	12 761	25 604
10-14	9 550	10 105	19 655	10 549	10 599	21 148	11 778	11 517	23 295
15-19	9 110	9 226	18 336	10 369	11 063	21 432	12 898	12 842	25 740
20-24	9 835	9 638	19 474	10 674	10 483	21 157	17 261	14 449	31 710
25-29	11 670	10 425	22 095	11 067	10 848	21 915	18 512	14 829	33 341
30-34	12 966	9 989	22 955	10 201	9 812	20 013	14 306	11 136	25 441
35-39	12 461	8 332	20 792	10 592	9 474	20 066	11 027	9 795	20 822
40-44	8 589	5 788	14 377	9 600	7 741	17 341	9 202	8 910	18 112
45-49	5 543	3 853	9 396	6 759	5 331	12 090	8 330	8 689	17 019
50-54	3 566	2 743	6 309	4 261	3 640	7 901	7 741	7 338	15 079
55-59	2 247	2 017	4 264	2 709	2 571	5 280	5 608	5 021	10 629
60-64	1 369	1 668	3 038	1 657	2 104	3 761	3 272	3 308	6 580
65-69	997	1 247	2 244	1 026	1 524	2 550	1 962	2 321	4 283
70-74	563	644	1 208	735	1 087	1 822	1 020	1 834	2 854
75-79	423	628	1 050	413	543	956	703	1 123	1 826
80-84	189	268	457	273	476	749	328	717	1 045
85+	144	242	386	153	271	424	291	560	851
Total	109 440	97 395	206 836	112 317	109 430	221 747	152 211	142 326	294 536

Age and sex structure – DC31: Nkangala

Table 8.1.1.8: Distribution of the population by age and sex; Victor Khanye municipality – 1996, 2001 and 2011

MP311: Victor Khanye	1996			2001			2011		
	Male	Female	Total	Male	Female	Total	Male	Female	Total
	0-4	2 381	2 489	4 870	3 143	3 101	6 244	3 990	4 063
5-9	2 694	2 648	5 342	2 975	3 000	5 975	3 349	3 322	6 672
10-14	2 746	2 876	5 622	2 891	2 882	5 773	3 415	3 146	6 561
15-19	2 733	2 874	5 606	2 885	2 976	5 861	3 433	3 347	6 780
20-24	2 619	2 801	5 420	2 591	2 656	5 247	4 114	3 516	7 629
25-29	2 510	2 543	5 052	2 534	2 714	5 248	4 188	3 538	7 726
30-34	2 107	2 201	4 308	2 320	2 147	4 467	3 335	2 772	6 107
35-39	1 851	1 843	3 694	1 945	2 127	4 072	2 868	2 558	5 426
40-44	1 611	1 474	3 086	1 649	1 683	3 332	2 443	2 040	4 483
45-49	1 213	1 094	2 307	1 387	1 362	2 749	2 069	2 144	4 213
50-54	958	846	1 804	1 082	1 109	2 191	1 683	1 686	3 369
55-59	728	691	1 419	786	768	1 554	1 381	1 343	2 724
60-64	565	587	1 152	569	694	1 263	1 002	1 144	2 146
65-69	430	452	882	381	447	828	656	704	1 361
70-74	252	290	542	263	391	654	440	536	976
75-79	182	259	441	151	211	362	238	361	598
80-84	100	113	213	137	209	346	126	221	347
85+	53	71	124	52	119	171	87	193	279
Total	25 733	26 151	51 884	27 741	28 596	56 337	38 817	36 634	75 450

Table 8.1.1.9: Distribution of the population by age and sex; Emalahleni municipality – 1996, 2001 and 2011

MP312: Emalahleni	1996			2001			2011		
	Male	Female	Total	Male	Female	Total	Male	Female	Total
	0-4	11 363	11 375	22 738	13 133	13 723	26 856	19 803	19 821
5-9	11 405	11 459	22 865	12 592	12 732	25 324	15 598	15 257	30 855
10-14	10 964	11 511	22 475	12 906	13 335	26 241	14 683	14 390	29 073
15-19	10 286	10 747	21 033	12 926	13 487	26 413	15 997	16 218	32 214
20-24	11 846	11 415	23 261	13 779	13 285	27 064	24 156	20 249	44 405
25-29	12 201	11 419	23 620	14 148	13 801	27 949	26 728	20 191	46 920
30-34	12 317	11 415	23 732	12 405	12 254	24 659	20 716	15 483	36 199
35-39	11 729	9 370	21 100	12 545	11 745	24 290	16 553	13 678	30 231
40-44	9 252	7 314	16 565	11 498	9 260	20 758	13 298	11 943	25 240
45-49	6 637	4 749	11 385	9 079	7 067	16 146	11 941	11 084	23 026
50-54	4 436	3 421	7 858	6 186	4 721	10 907	10 585	8 810	19 395
55-59	2 964	2 502	5 467	3 792	3 208	7 000	7 885	6 784	14 668
60-64	1 765	1 955	3 720	2 385	2 517	4 902	4 840	4 629	9 469
65-69	1 233	1 474	2 708	1 375	1 648	3 023	2 555	2 973	5 527
70-74	754	959	1 713	966	1 282	2 248	1 699	2 276	3 975
75-79	535	734	1 270	504	731	1 235	864	1 302	2 166
80-84	221	355	577	333	578	911	464	886	1 349
85+	164	227	391	162	322	484	387	741	1 128
Total	120 073	112 403	232 476	140 714	135 696	276 410	208 752	186 715	395 465

Table 8.1.1.10: Distribution of the population by age and sex; Steve Tshwete municipality – 1996, 2001 and 2011

MP313: Steve Tshwete	1996			2001			2011		
	Male	Female	Total	Male	Female	Total	Male	Female	Total
	0-4	6 254	6 444	12 698	6 866	6 895	13 761	11 127	11 117
5-9	6 616	6 623	13 239	6 900	7 005	13 905	9 048	9 059	18 107
10-14	6 733	6 913	13 646	7 202	7 418	14 620	8 663	8 554	17 218
15-19	6 165	6 271	12 436	7 221	7 517	14 738	9 484	9 425	18 909
20-24	6 545	6 444	12 989	6 616	6 881	13 497	13 025	11 116	24 141
25-29	6 944	6 785	13 729	6 601	7 112	13 713	14 273	11 336	25 609
30-34	6 491	6 253	12 744	6 152	6 459	12 611	11 152	9 009	20 161
35-39	5 990	5 390	11 381	5 826	5 919	11 745	9 578	8 379	17 957
40-44	4 835	4 225	9 060	5 101	4 665	9 766	8 197	7 499	15 696
45-49	3 499	2 755	6 254	4 208	3 705	7 913	6 863	6 741	13 604
50-54	2 338	2 017	4 355	2 947	2 541	5 488	6 131	5 408	11 539
55-59	1 621	1 536	3 157	1 830	1 787	3 617	4 654	4 202	8 855
60-64	993	1 200	2 194	1 245	1 388	2 633	3 046	2 895	5 940
65-69	808	954	1 762	700	987	1 687	1 791	2 085	3 876
70-74	498	598	1 097	567	831	1 398	1 131	1 494	2 625
75-79	317	517	834	296	456	752	647	945	1 592
80-84	137	275	412	198	370	568	355	649	1 003
85+	92	185	277	117	244	361	244	509	753
Total	66 879	65 384	132 263	70 593	72 180	142 773	119 409	110 422	229 830

Table 8.1.1.11: Distribution of the population by age and sex; Emakhazeni municipality – 1996, 2001 and 2011

MP314: Emakhazeni	1996			2001			2011		
	Male	Female	Total	Male	Female	Total	Male	Female	Total
	0-4	1 855	1 801	3 656	2 238	2 235	4 473	2 482	2 376
5-9	2 003	2 090	4 093	2 128	2 250	4 378	2 146	2 066	4 212
10-14	2 033	2 094	4 127	2 333	2 377	4 710	2 185	1 946	4 130
15-19	1 853	1 860	3 713	2 385	2 362	4 747	2 223	2 164	4 387
20-24	1 693	1 752	3 446	2 110	2 025	4 135	2 507	2 293	4 799
25-29	1 618	1 602	3 220	1 877	2 014	3 891	2 649	2 167	4 817
30-34	1 430	1 404	2 834	1 700	1 641	3 341	2 029	1 734	3 762
35-39	1 228	1 140	2 368	1 342	1 449	2 791	1 693	1 522	3 215
40-44	989	951	1 939	1 188	1 207	2 395	1 446	1 422	2 867
45-49	781	718	1 500	984	1 047	2 031	1 172	1 242	2 413
50-54	683	662	1 345	828	799	1 627	931	1 044	1 975
55-59	515	517	1 032	669	649	1 318	780	899	1 679
60-64	407	431	839	477	557	1 034	679	676	1 355
65-69	378	390	768	314	384	698	491	550	1 042
70-74	238	224	462	241	347	588	330	401	731
75-79	212	215	427	137	196	333	156	248	403
80-84	86	111	197	111	207	318	125	180	305
85+	86	89	175	75	123	198	75	188	264
Total	18 089	18 051	36 141	21 137	21 869	43 006	24 099	23 118	47 215

Table 8.1.1.12: Distribution of the population by age and sex; Thembisile municipality – 1996, 2001 and 2011

MP315: Thembisile	1996			2001			2011		
	Male	Female	Total	Male	Female	Total	Male	Female	Total
	0-4	15 378	15 986	31 364	14 540	14 787	29 327	18 094	18 134
5-9	15 626	15 930	31 556	16 142	16 367	32 509	16 536	16 323	32 859
10-14	15 700	16 242	31 942	16 646	16 967	33 613	15 535	15 111	30 646
15-19	14 340	15 262	29 603	16 512	16 937	33 449	16 753	17 030	33 783
20-24	12 422	14 203	26 626	12 238	13 786	26 024	15 794	15 547	31 341
25-29	8 161	9 611	17 772	8 974	11 143	20 117	13 157	13 924	27 081
30-34	6 473	8 349	14 822	6 531	8 863	15 394	10 195	11 151	21 346
35-39	5 633	7 004	12 638	5 993	8 293	14 286	8 743	10 175	18 919
40-44	4 926	6 261	11 186	5 200	6 834	12 034	7 475	8 665	16 140
45-49	3 931	4 347	8 279	4 337	5 931	10 268	6 609	8 378	14 986
50-54	2 513	3 041	5 553	3 482	4 254	7 736	5 362	7 227	12 590
55-59	1 800	2 725	4 525	2 349	2 967	5 316	4 687	6 158	10 845
60-64	1 256	2 498	3 754	1 707	3 096	4 803	3 570	4 808	8 379
65-69	1 493	2 444	3 937	1 179	2 329	3 508	2 133	3 204	5 337
70-74	964	1 380	2 344	1 234	2 141	3 375	1 348	2 652	4 000
75-79	864	1 491	2 355	717	1 224	1 941	669	1 698	2 368
80-84	376	686	1 063	582	1 172	1 754	520	1 316	1 836
85+	263	506	769	365	764	1 129	497	1 279	1 776
Total	112 120	127 966	240 086	118 728	137 855	256 583	147 677	162 780	310 459

Table 8.1.1.13: Distribution of the population by age and sex; Dr JS Moroka municipality – 1996, 2001 and 2011

MP316: Dr JS Moroka	1996			2001			2011		
	Male	Female	Total	Male	Female	Total	Male	Female	Total
	0-4	16 024	16 262	32 286	13 467	13 681	27 148	14 765	14 732
5-9	16 547	16 656	33 202	15 727	15 932	31 659	13 255	13 191	26 446
10-14	16 709	17 410	34 119	16 595	16 839	33 434	13 124	12 382	25 505
15-19	14 767	15 413	30 180	15 940	16 683	32 623	14 195	13 829	28 024
20-24	12 644	14 552	27 196	10 368	11 898	22 266	12 019	11 780	23 799
25-29	8 348	10 869	19 217	7 056	9 864	16 920	8 991	10 261	19 252
30-34	6 518	8 495	15 013	5 433	7 948	13 381	6 820	7 779	14 599
35-39	5 377	6 643	12 021	5 192	6 910	12 102	5 857	7 160	13 016
40-44	4 763	5 714	10 477	4 374	5 519	9 893	5 169	6 578	11 747
45-49	3 868	4 528	8 396	3 789	4 947	8 736	4 899	6 256	11 154
50-54	2 983	3 772	6 755	3 191	4 169	7 360	4 270	5 382	9 652
55-59	2 318	3 386	5 704	2 601	3 556	6 157	3 999	5 057	9 056
60-64	1 667	3 234	4 900	2 133	3 759	5 892	3 426	4 731	8 157
65-69	2 008	3 318	5 327	1 600	2 932	4 532	2 483	4 042	6 525
70-74	1 375	2 016	3 391	1 530	2 953	4 483	1 882	3 315	5 197
75-79	1 196	2 132	3 329	970	1 707	2 677	965	2 188	3 153
80-84	546	987	1 533	758	1 681	2 439	749	1 800	2 549
85+	410	915	1 326	457	1 145	1 602	629	1 747	2 376
Total	118 070	136 301	254 371	111 181	132 123	243 304	117 497	132 210	249 704

Age and sex structure – DC32: Ehlanzeni

Table 8.1.1.14: Distribution of the population by age and sex; Thaba Chweu municipality – 1996, 2001 and 2011

MP321: Thaba Chweu	1996			2001			2011		
	Male	Female	Total	Male	Female	Total	Male	Female	Total
	0-4	2 944	3 059	6 004	3 933	3 829	7 762	4 804	4 795
5-9	3 257	3 314	6 571	3 650	3 762	7 412	3 805	3 781	7 586
10-14	3 316	3 362	6 678	3 984	4 055	8 039	3 863	3 714	7 577
15-19	2 940	3 039	5 979	3 827	3 897	7 724	4 131	4 136	8 267
20-24	3 141	3 199	6 341	3 930	3 791	7 721	5 362	4 718	10 080
25-29	3 155	2 946	6 101	4 168	4 102	8 270	5 889	4 939	10 829
30-34	3 009	2 815	5 824	3 599	3 534	7 133	4 727	3 993	8 720
35-39	2 595	2 330	4 925	3 223	3 153	6 376	4 226	3 680	7 907
40-44	2 186	2 049	4 235	2 577	2 464	5 041	3 503	3 181	6 684
45-49	1 695	1 492	3 187	2 229	2 289	4 518	2 958	2 867	5 825
50-54	1 294	1 150	2 445	1 792	1 661	3 453	2 217	2 158	4 375
55-59	1 083	938	2 021	1 283	1 255	2 538	1 768	1 844	3 612
60-64	673	777	1 451	1 053	1 030	2 083	1 181	1 301	2 483
65-69	481	644	1 126	545	697	1 242	793	942	1 736
70-74	343	325	668	403	623	1 026	557	778	1 336
75-79	221	338	559	258	315	573	311	486	796
80-84	113	206	319	154	281	435	190	366	555
85+	69	151	221	109	222	331	129	293	422
Total	32 517	32 136	64 652	40 717	40 960	81 677	50 414	47 972	98 390

Table 8.1.1.15: Distribution of the population by age and sex; Mbombela municipality – 1996, 2001 and 2011

MP322: Mbombela	1996			2001			2011		
	Male	Female	Total	Male	Female	Total	Male	Female	Total
	0-4	24 774	25 603	50 377	25 960	26 210	52 170	33 577	32 699
5-9	26 187	26 688	52 875	26 965	27 775	54 740	26 920	27 000	53 919
10-14	25 608	26 049	51 657	28 546	29 328	57 874	28 174	27 282	55 456
15-19	21 614	22 596	44 210	28 192	29 099	57 291	29 563	30 838	60 401
20-24	20 969	23 118	44 087	22 528	24 184	46 712	32 704	33 338	66 043
25-29	16 902	19 927	36 829	20 870	23 862	44 732	31 279	31 638	62 917
30-34	15 135	17 529	32 664	16 428	19 428	35 856	23 103	23 479	46 582
35-39	12 145	12 729	24 873	15 045	17 479	32 524	19 459	21 297	40 757
40-44	9 780	10 484	20 264	11 389	12 224	23 613	15 057	17 622	32 679
45-49	7 369	7 325	14 694	8 929	10 603	19 532	13 028	15 475	28 503
50-54	5 147	5 258	10 404	6 684	7 245	13 929	9 779	11 037	20 816
55-59	4 356	4 983	9 339	4 713	5 017	9 730	7 784	9 650	17 435
60-64	2 646	4 094	6 740	4 030	5 287	9 317	5 595	6 594	12 189
65-69	2 776	3 898	6 674	2 339	3 760	6 099	3 582	4 399	7 982
70-74	1 753	2 079	3 832	2 230	3 509	5 739	2 736	4 139	6 875
75-79	1 541	1 948	3 490	1 272	1 696	2 968	1 419	2 646	4 065
80-84	632	760	1 392	1 011	1 635	2 646	1 055	2 102	3 157
85+	422	741	1 164	538	894	1 432	937	1 808	2 745
Total	199 755	215 809	415 564	227 669	249 235	476 904	285 751	303 043	588 796

Table 8.1.1.16: Distribution of the population by age and sex; Umjindi municipality – 1996, 2001 and 2011

MP323: Umjindi	1996			2001			2011		
	Male	Female	Total	Male	Female	Total	Male	Female	Total
	0 - 4	2 188	2 320	4 507	2 578	2 629	5 207	3 512	3 443
5 - 9	1 988	2 256	4 244	2 356	2 465	4 820	2 892	2 890	5 782
10 - 14	2 143	2 131	4 274	2 249	2 372	4 621	2 896	2 787	5 683
15 - 19	2 097	2 155	4 252	2 632	2 668	5 301	3 074	3 127	6 201
20 - 24	2 860	2 575	5 436	3 082	2 603	5 685	3 880	3 260	7 140
25 - 29	3 469	2 612	6 081	3 485	2 704	6 189	4 295	3 365	7 661
30 - 34	2 955	1 967	4 922	3 092	2 288	5 380	3 310	2 490	5 800
35 - 39	2 176	1 493	3 669	2 445	1 888	4 332	2 716	2 360	5 076
40 - 44	1 713	1 209	2 923	1 845	1 479	3 324	2 190	1 969	4 159
45 - 49	1 230	886	2 116	1 359	1 161	2 520	1 864	1 602	3 466
50 - 54	808	604	1 412	1 014	888	1 902	1 434	1 328	2 761
55 - 59	640	514	1 154	703	594	1 298	1 109	1 035	2 144
60 - 64	405	440	845	592	584	1 177	721	800	1 521
65 - 69	353	382	735	310	399	708	470	545	1 015
70 - 74	206	179	385	277	332	609	397	415	812
75 - 79	169	141	310	147	137	283	200	295	495
80 - 84	63	71	133	117	119	236	98	186	285
85+	38	39	77	70	84	154	82	118	200
Total	25 500	21 974	47 473	28 352	25 392	53 744	35 141	32 016	67 157

Table 8.1.1.17: Distribution of the population by age and sex; Nkomazi municipality – 1996, 2001 and 2011

MP324: Nkomazi	1996			2001			2011		
	Male	Female	Total	Male	Female	Total	Male	Female	Total
	0 - 4	20 041	20 422	40 463	21 622	22 388	44 009	24 460	24 607
5 - 9	20 082	20 574	40 656	22 910	23 119	46 029	21 690	22 077	43 767
10 - 14	18 953	19 164	38 117	23 004	23 351	46 354	23 267	23 178	46 445
15 - 19	15 787	15 872	31 658	21 813	21 569	43 382	24 407	24 564	48 971
20 - 24	12 585	14 912	27 497	15 992	17 087	33 079	21 460	22 642	44 102
25 - 29	8 369	11 510	19 879	11 918	14 477	26 395	17 594	19 718	37 312
30 - 34	7 070	9 224	16 294	8 766	12 006	20 772	12 510	14 668	27 177
35 - 39	5 434	6 610	12 044	7 889	10 195	18 084	9 784	12 105	21 889
40 - 44	4 489	5 682	10 171	5 959	7 134	13 094	7 364	10 216	17 580
45 - 49	3 359	4 200	7 559	4 749	6 087	10 836	6 452	8 200	14 652
50 - 54	2 311	2 635	4 946	3 551	4 301	7 852	4 606	5 832	10 438
55 - 59	2 237	3 210	5 447	2 358	2 702	5 060	3 865	5 022	8 887
60 - 64	1 504	2 888	4 392	2 481	3 659	6 139	2 856	3 813	6 669
65 - 69	1 766	3 181	4 947	1 490	2 944	4 433	1 846	2 681	4 528
70 - 74	1 070	1 274	2 344	1 468	3 067	4 535	1 716	2 874	4 591
75 - 79	1 002	1 290	2 292	814	1 067	1 881	886	1 953	2 839
80 - 84	352	425	777	750	1 081	1 831	718	1 756	2 474
85+	232	395	627	335	569	905	594	1 049	1 643
Total	126 644	143 467	270 110	157 867	176 802	334 669	186 074	206 956	393 030

Table 8.1.1.18: Distribution of the population by age and sex; Bushbuckridge municipality – 1996, 2001 and 2011

MP325: Bushbuckridge	1996			2001			2011		
	Male	Female	Total	Male	Female	Total	Male	Female	Total
	0-4	34 331	35 402	69 734	30 203	31 066	61 269	35 470	34 892
5-9	40 560	41 443	82 003	35 586	36 172	71 758	32 634	32 283	64 917
10-14	38 570	39 944	78 514	38 203	38 583	76 786	33 228	31 845	65 074
15-19	34 372	36 523	70 894	34 348	34 505	68 853	33 911	33 904	67 815
20-24	23 727	30 018	53 745	21 036	25 747	46 783	27 017	29 316	56 333
25-29	17 324	24 441	41 764	13 269	20 751	34 020	18 457	24 801	43 258
30-34	12 012	18 286	30 298	10 441	17 040	27 481	13 363	19 278	32 641
35-39	9 718	14 451	24 169	8 917	14 809	23 726	10 710	16 788	27 498
40-44	7 034	11 529	18 563	6 722	11 229	17 951	8 998	14 553	23 552
45-49	6 052	8 460	14 512	5 872	10 023	15 895	7 528	12 976	20 504
50-54	4 143	6 269	10 412	4 942	7 417	12 359	5 675	9 700	15 375
55-59	4 197	6 235	10 433	3 692	5 414	9 106	5 186	8 956	14 142
60-64	2 955	6 411	9 366	3 663	5 907	9 570	4 513	6 594	11 107
65-69	4 120	6 860	10 980	2 411	5 306	7 717	3 068	5 424	8 492
70-74	2 472	3 186	5 658	2 610	5 507	8 117	2 801	4 823	7 623
75-79	2 503	2 968	5 470	1 442	2 153	3 595	1 371	3 628	4 999
80-84	807	1 021	1 828	1 319	2 059	3 378	1 143	3 273	4 417
85+	525	915	1 440	565	1 195	1 760	949	2 192	3 140
Total	245 421	294 361	539 783	225 241	274 883	500 124	246 022	295 226	541 249

Table 8.1.2.1: Population growth rates by municipality – 1996, 2001 and 2011

Municipality	Total population				Population growth rate (2001–2011)
	1996	2001	Population growth rate (1996–2001)	2011	
DC30: Gert Sibande	797 400	900 007	2,42	1 043 194	1,48
MP301: Albert Luthuli	182 719	187 751	0,54	186 010	-0,09
MP302: Msukaligwa	105 368	124 812	3,39	149 377	1,80
MP303: Mkhondo	100 388	143 077	7,09	171 982	1,84
MP304: Pixley Ka Seme	70 178	80 737	2,80	83 235	0,30
MP305: Lekwa	90 080	103 265	2,73	115 662	1,13
MP306: Dipaleseng	39 042	38 618	-0,22	42 390	0,93
MP307: Govan Mbeki	209 626	221 747	1,12	294 538	2,84
DC31: Nkangala	962 249	1 018 422	1,13	1 308 129	2,50
MP311: Victor Khanye	53 208	56 335	1,14	75 452	2,92
MP312: Emalahleni	236 040	276 413	3,16	395 466	3,58
MP313: Steve Tshwete	135 335	142 772	1,07	229 831	4,76
MP314: Emakhazeni	37 004	43 007	3,01	47 216	0,93
MP315: Thembisile	241 360	256 583	1,22	310 458	1,91
MP316: Dr JS Moroka	259 302	243 313	-1,27	249 705	0,26
DC32: Ehlanzeni	1 364 221	1 447 125	1,18	1 688 615	1,54
MP321: Thaba Chweu	65 909	81 681	4,29	98 387	1,86
MP322: Mbombela	426 090	476 903	2,25	588 794	2,11
MP323: Umjindi	48 547	53 744	2,03	67 156	2,23
MP324: Nkomazi	277 864	334 668	3,72	393 030	1,61
MP325: Bushbuckridge	545 811	500 128	-1,75	541 248	0,79
Mpumalanga	3 123 870	3 365 554	1,49	4 039 939	1,83

Table 8.1.3.1: Sex ratios by municipality – 1996, 2001 and 2011

Municipality	Male			Female			Sex ratios		
	1996	2001	2011	1996	2001	2011	1996	2001	2011
	DC30: Gert Sibande	393 545	433 428	514 406	403 855	466 580	528 789	97	93
MP301: Albert Luthuli	84 255	86 145	87 188	98 464	101 605	98 822	86	85	88
MP302: Msukaligwa	52 220	60 132	74 113	53 147	64 680	75 264	98	93	98
MP303: Mkhondo	48 673	67 913	82 263	51 714	75 164	89 719	94	90	92
MP304: Pixley Ka Seme	33 775	37 688	39 520	36 403	43 049	43 715	93	88	90
MP305: Lekwa	44 684	50 629	57 647	45 396	52 636	58 014	98	96	99
MP306: Dipaleseng	19 034	18 602	21 462	20 008	20 016	20 928	95	93	103
MP307: Govan Mbeki	110 904	112 318	152 211	98 722	109 429	142 326	112	103	107
DC31: Nkangala	468 954	490 099	656 247	493 294	528 323	651 882	95	93	101
MP311: Victor Khanye	26 466	27 738	38 816	26 742	28 597	36 636	99	97	106
MP312: Emalahleni	122 104	140 715	208 751	113 936	135 698	186 715	107	104	112
MP313: Steve Tshwete	68 509	70 593	119 411	66 826	72 179	110 421	103	98	108
MP314: Emakhazeni	18 553	21 137	24 099	18 451	21 870	23 117	101	97	104
MP315: Thembisile	112 739	118 731	147 676	128 621	137 852	162 783	88	86	91
MP316: Dr JS Moroka	120 583	111 186	117 494	138 719	132 127	132 211	87	84	89
DC32: Ehlanzeni	642 963	679 847	803 403	721 258	767 277	885 212	89	89	91
MP321: Thaba Chweu	33 174	40 716	50 415	32 735	40 964	47 972	101	99	105
MP322: Mbombela	205 091	227 671	285 750	220 998	249 233	303 044	93	91	94
MP323: Umjindi	26 079	28 352	35 141	22 468	25 392	32 016	116	112	110
MP324: Nkomazi	130 343	157 867	186 074	147 521	176 801	206 956	88	89	90
MP325: Bushbuckridge	248 276	225 241	246 023	297 536	274 887	295 224	83	82	83
Mpumalanga	1 505 462	1 603 374	1 974 055	1 618 407	1 762 180	2 065 883	93	91	96

Table 8.1.4.1: Distribution of population by population group (Black African), sex and municipality – 1996, 2001 and 2011

Municipality	1996			2001			2011		
	Male	Female	Total	Male	Female	Total	Male	Female	Total
DC30: Gert Sibande	339 110	349 826	688 936	391 756	424 508	816 264	453 383	470 593	923 976
MP301: Albert Luthuli	81 771	96 091	177 862	84 449	99 942	184 391	84 668	96 863	181 531
MP302: Msukaligwa	42 834	43 563	86 397	53 491	57 924	111 415	65 001	66 625	131 625
MP303: Mkhondo	44 256	47 298	91 554	64 695	71 828	136 523	77 528	85 304	162 832
MP304: Pixley Ka Seme	29 628	32 178	61 806	34 570	39 778	74 348	35 596	39 761	75 357
MP305: Lekwa	36 013	36 849	72 862	43 702	45 351	89 053	48 375	48 988	97 363
MP306: Dipaleseng	16 512	17 444	33 956	16 888	18 190	35 078	19 289	18 790	38 079
MP307: Govan Mbeki	88 096	76 403	164 499	93 960	91 495	185 456	122 927	114 263	237 190
DC31: Nkangala	408 346	432 613	840 959	445 775	482 913	928 689	575 306	574 934	1 150 240
MP311: Victor Khanye	21 727	21 930	43 657	24 507	25 221	49 728	31 875	30 214	62 089
MP312: Emalahleni	91 831	84 194	176 025	116 401	110 919	227 321	171 024	150 644	321 668
MP313: Steve Tshwete	46 561	44 660	91 221	56 653	57 718	114 371	88 889	80 158	169 048
MP314: Emakhazeni	16 271	16 122	32 392	18 772	19 541	38 313	20 985	20 183	41 168
MP315: Thembisile	112 087	127 822	239 909	118 430	137 572	256 002	146 040	161 912	307 952
MP316: Dr JS Moroka	119 870	137 886	257 756	111 012	131 942	242 953	116 493	131 823	248 316
DC32: Ehlanzeni	609 725	687 585	1 297 310	651 781	738 307	1 390 088	752 680	835 323	1 588 002
MP321: Thaba Chweu	27 769	26 985	54 753	35 228	35 065	70 293	41 280	39 005	80 285
MP322: Mbombela	185 127	201 020	386 147	211 382	232 452	443 834	254 829	271 579	526 408
MP323: Umjindi	22 881	19 246	42 127	25 348	22 302	47 649	30 772	27 674	58 446
MP324: Nkomazi	127 937	145 159	273 095	155 417	174 413	329 830	181 260	202 814	384 074
MP325: Bushbuckridge	246 012	295 175	541 187	224 406	274 075	498 481	244 539	294 251	538 790
Mpumalanga	1 357 182	1 470 024	2 827 206	1 489 312	1 645 728	3 135 040	1 781 368	1 880 850	3 662 219

Table 8.1.4.2: Distribution of population by population group (Coloured), sex and municipality – 1996, 2001 and 2011

Municipality	1996			2001			2011		
	Male	Female	Total	Male	Female	Total	Male	Female	Total
DC30: Gert Sibande	2 973	2 951	5 925	3 019	3 016	6 035	5 468	5 299	10 767
MP301: Albert Luthuli	119	121	240	155	142	297	237	197	434
MP302: Msukaligwa	200	223	423	202	176	378	480	412	892
MP303: Mkhondo	237	265	502	285	302	587	450	444	894
MP304: Pixley Ka Seme	127	149	276	185	217	402	260	267	528
MP305: Lekwa	1 032	1 050	2 082	918	1 019	1 937	1 592	1 712	3 304
MP306: Dipaleseng	15	19	34	29	39	68	96	117	213
MP307: Govan Mbeki	1 243	1 126	2 369	1 244	1 122	2 366	2 353	2 149	4 502
DC31: Nkangala	4 073	4 235	8 308	4 232	4 500	8 733	7 432	7 439	14 871
MP311: Victor Khanye	111	131	241	108	149	257	408	401	810
MP312: Emalahleni	1 931	1 946	3 877	1 910	2 046	3 956	3 417	3 299	6 717
MP313: Steve Tshwete	1 716	1 800	3 515	1 728	1 818	3 547	2 952	3 036	5 987
MP314: Emakhazeni	93	80	173	252	213	466	303	260	563
MP315: Thembisile	127	167	293	151	171	321	222	326	547
MP316: Dr JS Moroka	95	113	208	83	103	186	130	117	247
DC32: Ehlanzeni	2 944	3 218	6 162	3 665	3 997	7 661	5 249	5 725	10 974
MP321: Thaba Chweu	625	732	1 356	748	861	1 609	1 239	1 353	2 592
MP322: Mbombela	1 504	1 566	3 070	1 837	1 973	3 810	2 709	2 883	5 592
MP323: Umjindi	330	402	731	412	429	841	614	726	1 340
MP324: Nkomazi	220	213	433	285	311	596	428	461	889
MP325: Bushbuckridge	265	306	571	383	422	805	259	302	561
Mpumalanga	9 990	10 404	20 394	10 916	11 513	22 429	18 149	18 462	36 611

Table 8.1.4.3: Distribution of population by population group (Indian/ Asian), sex and municipality – 1996, 2001 and 2011

Municipality	1996			2001			2011		
	Male	Female	Total	Male	Female	Total	Male	Female	Total
DC30: Gert Sibande	3 281	3 218	6 499	2 787	2 812	5 598	6 128	4 873	11 002
MP301: Albert Luthuli	138	134	273	136	114	251	514	241	755
MP302: Msukaligwa	411	483	894	395	429	824	975	703	1 678
MP303: Mkhondo	540	523	1 063	384	389	773	786	630	1 417
MP304: Pixley Ka Seme	218	207	425	228	237	466	536	422	958
MP305: Lekwa	537	550	1 087	470	485	955	736	660	1 395
MP306: Dipaleseng	183	172	355	142	133	275	203	190	393
MP307: Govan Mbeki	1 254	1 148	2 402	1 031	1 024	2 055	2 378	2 028	4 406
DC31: Nkangala	1 812	1 738	3 550	1 395	1 297	2 692	5 706	3 843	9 549
MP311: Victor Khanye	45	50	95	54	47	101	170	89	259
MP312: Emalahleni	663	651	1 314	557	535	1 092	2 080	1 481	3 562
MP313: Steve Tshwete	975	917	1 891	675	638	1 313	1 959	1 741	3 700
MP314: Emakhazeni	91	77	169	59	46	105	212	118	330
MP315: Thembisile	16	23	39	18	8	26	747	283	1 031
MP316: Dr JS Moroka	22	21	42	31	23	55	538	130	668
DC32: Ehlanzeni	1 461	1 438	2 899	1 438	1 236	2 674	4 330	3 036	7 366
MP321: Thaba Chweu	166	147	313	160	140	300	341	254	595
MP322: Mbombela	847	847	1 694	816	727	1 543	2 277	1 947	4 223
MP323: Umjindi	281	306	588	253	270	523	397	291	689
MP324: Nkomazi	86	73	159	153	63	216	882	433	1 316
MP325: Bushbuckridge	81	64	145	56	36	92	432	111	544
Mpumalanga	6 554	6 394	12 948	5 619	5 344	10 964	16 165	11 753	27 917

Table 8.1.4.4: Distribution of population by population group (White), sex and municipality – 1996, 2001 and 2011

Municipality	1996			2001			2011		
	Male	Female	Total	Male	Female	Total	Male	Female	Total
	DC30: Gert Sibande	45 466	45 320	90 785	35 867	36 244	72 111	47 197	47 083
MP301: Albert Luthuli	1 620	1 653	3 272	1 405	1 407	2 812	1 478	1 459	2 938
MP302: Msukaligwa	8 530	8 597	17 127	6 043	6 152	12 195	7 346	7 360	14 707
MP303: Mkhondo	3 345	3 406	6 750	2 549	2 646	5 195	3 221	3 226	6 447
MP304: Pixley Ka Seme	3 616	3 676	7 292	2 705	2 816	5 521	2 969	3 199	6 167
MP305: Lekwa	6 810	6 700	13 509	5 539	5 781	11 320	6 649	6 564	13 212
MP306: Dipaleseng	2 169	2 176	4 346	1 543	1 654	3 197	1 818	1 814	3 633
MP307: Govan Mbeki	19 376	19 113	38 489	16 083	15 787	31 870	23 716	23 460	47 176
DC31: Nkangala	52 219	52 118	104 337	38 697	39 613	78 309	64 997	64 660	129 656
MP311: Victor Khanye	4 451	4 504	8 956	3 069	3 180	6 249	6 197	5 864	12 060
MP312: Emalahleni	26 879	26 533	53 412	21 846	22 198	44 044	31 038	30 855	61 893
MP313: Steve Tshwete	18 803	18 935	37 738	11 536	12 004	23 541	24 988	25 198	50 186
MP314: Emakhazeni	1 978	2 029	4 007	2 054	2 069	4 123	2 542	2 534	5 076
MP315: Thembisile	86	93	179	132	101	234	162	138	299
MP316: Dr JS Moroka	22	24	46	60	60	119	69	71	141
DC32: Ehlanzeni	25 001	25 128	50 129	22 963	23 738	46 701	39 364	40 296	79 659
MP321: Thaba Chweu	4 317	4 570	8 886	4 580	4 899	9 479	7 114	7 185	14 299
MP322: Mbombela	16 441	16 385	32 826	13 636	14 080	27 716	25 231	26 220	51 451
MP323: Umjindi	2 315	2 398	4 714	2 339	2 391	4 730	3 267	3 288	6 555
MP324: Nkomazi	1 539	1 450	2 989	2 012	2 015	4 027	3 201	3 101	6 301
MP325: Bushbuckridge	389	325	714	396	354	749	550	503	1 053
Mpumalanga	122 685	122 566	245 251	97 527	99 594	197 121	151 557	152 038	303 595

Table 8.1.5.1: Distribution of the population by functional age groups, sex and municipality – 1996, 2001 and 2011

	1996			2001			2011		
	Male	Female	Total	Male	Female	Total	Male	Female	Total
	MP301: Albert Luthuli								
0-14	38 269	39 079	77 348	37 941	38 294	76 235	34 238	33 563	67 801
15-64	41 389	53 267	94 656	44 815	57 646	102 461	49 328	59 014	108 342
65+	3 280	4 974	8 254	3 388	5 665	9 053	3 622	6 246	9 868
Total	82 938	97 320	180 258	86 145	101 605	187 750	87 188	98 822	186 010
MP302: Msukaligwa									
0-14	17 564	18 100	35 664	21 707	21 859	43 566	22 921	22 489	45 410
15-64	32 710	32 479	65 189	36 413	39 720	76 133	48 838	49 063	97 901
65+	1 731	2 357	4 088	2 013	3 101	5 114	2 354	3 712	6 066
Total	52 005	52 935	104 940	60 132	64 680	124 812	74 113	75 264	149 377
MP303: Mkhondo									
0-14	18 280	18 651	36 931	28 221	28 311	56 532	31 485	31 437	62 922
15-64	28 183	30 426	58 609	37 555	43 306	80 861	48 266	53 513	101 779
65+	1 620	2 310	3 930	2 136	3 548	5 684	2 512	4 768	7 280
Total	48 083	51 388	99 471	67 913	75 164	143 077	82 263	89 719	171 982
MP304: Pixley Ka Seme									
0-14	12 398	12 936	25 334	15 323	15 843	31 166	14 561	14 489	29 050
15-64	18 833	20 922	39 755	20 840	24 589	45 429	23 150	26 302	49 452
65+	1 481	2 065	3 546	1 525	2 616	4 141	1 809	2 924	4 733
Total	32 712	35 923	68 635	37 688	43 049	80 737	39 520	43 715	83 235
MP305: Lekwa									
0-14	14 376	14 463	28 839	16 589	16 547	33 136	16 641	16 443	33 084
15-64	28 236	28 392	56 628	32 299	33 408	65 707	38 668	38 115	76 783
65+	1 667	2 196	3 863	1 741	2 681	4 422	2 338	3 455	5 793
Total	44 279	45 051	89 330	50 629	52 636	103 265	57 647	58 014	115 661

	1996			2001			2011		
	Male	Female	Total	Male	Female	Total	Male	Female	Total
	MP306: Dipaleseng								
0-14	6 327	6 370	12 697	6 349	6 359	12 708	6 018	5 935	11 953
15-64	11 523	12 196	23 719	11 402	12 465	23 867	14 459	13 503	27 962
65+	868	1 057	1 925	850	1 192	2 042	986	1 490	2 476
Total	18 719	19 623	38 342	18 602	20 016	38 618	21 462	20 928	42 390
	1996			2001			2011		
MP307: Govan Mbeki									
0-14	29 767	30 687	60 454	31 829	32 461	64 290	39 750	39 455	79 205
15-64	77 357	63 680	141 037	77 889	73 066	150 955	108 157	96 317	204 474
65+	2 316	3 029	5 345	2 601	3 902	6 503	4 304	6 555	10 859
Total	109 440	97 395	206 835	112 318	109 429	221 747	152 211	142 326	294 537
	1996			2001			2011		
MP311: Victor Khanye									
0-14	7 821	8 013	15 834	9 008	8 984	17 992	10 754	10 531	21 285
15-64	16 894	16 954	33 848	17 745	18 235	35 980	26 516	24 089	50 605
65+	1 017	1 184	2 201	985	1 378	2 363	1 547	2 016	3 563
Total	25 733	26 151	51 884	27 738	28 597	56 335	38 816	36 636	75 452
	1996			2001			2011		
MP312: Emalahleni									
0-14	33 732	34 346	68 078	38 631	39 789	78 420	50 084	49 469	99 553
15-64	83 433	74 307	157 740	98 743	91 348	190 091	152 699	129 069	281 768
65+	2 908	3 750	6 658	3 341	4 561	7 902	5 968	8 177	14 145
Total	120 073	112 403	232 476	140 715	135 698	276 413	208 751	186 715	395 466
	1996			2001			2011		
MP313: Steve Tshwete									
0-14	19 604	19 979	39 583	20 968	21 317	42 285	28 839	28 730	57 569
15-64	45 422	42 876	88 298	47 748	47 973	95 721	86 404	76 009	162 413
65+	1 853	2 529	4 382	1 878	2 889	4 767	4 168	5 682	9 850
Total	66 879	65 384	132 263	70 593	72 179	142 772	119 411	110 421	229 832

	1996			2001			2011		
	Male	Female	Total	Male	Female	Total	Male	Female	Total
	MP314: Emakhazeni								
0-14	5 891	5 985	11 876	6 700	6 862	13 562	6 813	6 388	13 201
15-64	11 198	11 038	22 236	13 557	13 749	27 306	16 109	15 162	31 271
65+	1 000	1 028	2 028	880	1 258	2 138	1 177	1 567	2 744
Total	18 089	18 051	36 140	21 137	21 870	43 007	24 099	23 117	47 216
	1996			2001			2011		
MP315: Thembisile									
0-14	46 703	48 158	94 861	47 328	48 121	95 449	50 164	49 568	99 732
15-64	61 456	73 301	134 757	67 325	82 102	149 427	92 345	103 065	195 410
65+	3 961	6 506	10 467	4 078	7 630	11 708	5 167	10 150	15 317
Total	112 120	127 966	240 086	118 731	137 852	256 583	147 676	162 783	310 459
	1996			2001			2011		
MP316: Dr JS Moroka									
0-14	49 280	50 328	99 608	45 789	46 451	92 240	41 143	40 305	81 448
15-64	63 255	76 604	139 859	60 081	75 257	135 338	69 643	78 814	148 457
65+	5 536	9 369	14 905	5 316	10 420	15 736	6 708	13 093	19 801
Total	118 070	136 301	254 371	111 186	132 127	243 313	117 494	132 211	249 705
	1996			2001			2011		
MP321: Thaba Chweu									
0-14	9 517	9 736	19 253	11 567	11 647	23 214	12 473	12 290	24 763
15-64	21 772	20 736	42 508	27 680	27 178	54 858	35 963	32 818	68 781
65+	1 228	1 664	2 892	1 469	2 139	3 608	1 980	2 864	4 844
Total	32 517	32 136	64 653	40 716	40 964	81 680	50 415	47 972	98 387
	1996			2001			2011		
MP322: Mbombela									
0-14	76 569	78 340	154 909	81 471	83 311	164 782	88 671	86 980	175 651
15-64	116 063	128 042	244 105	138 809	154 427	293 236	187 351	200 970	388 321
65+	7 123	9 428	16 551	7 391	11 495	18 886	9 728	15 094	24 822
Total	199 755	215 809	415 564	227 671	249 233	476 904	285 750	303 044	588 794

	1996			2001			2011		
	Male	Female	Total	Male	Female	Total	Male	Female	Total
	MP323: Umjindi								
0-14	6 319	6 707	13 026	7 182	7 465	14 647	9 300	9 120	18 420
15-64	18 353	14 456	32 809	20 249	16 857	37 106	24 593	21 336	45 930
65+	828	811	1 639	920	1 070	1 990	1 248	1 559	2 807
Total	25 500	21 973	47 473	28 352	25 392	53 744	35 141	32 016	67 156
	1996			2001			2011		
MP324: Nkomazi									
0-14	59 076	60 160	119 236	67 535	68 857	136 392	69 416	69 862	139 279
15-64	63 146	76 742	139 888	85 476	99 215	184 691	110 897	126 780	237 677
65+	4 422	6 565	10 987	4 856	8 729	13 585	5 761	10 314	16 075
Total	126 644	143 467	270 111	157 867	176 801	334 668	186 074	206 956	393 030
	1996			2001			2011		
MP325: Bushbuckridge									
0-14	113 461	116 789	230 250	103 991	105 823	209 814	101 333	99 020	200 353
15-64	121 533	162 622	284 155	112 901	152 843	265 744	135 359	176 865	312 224
65+	10 427	14 951	25 378	8 349	16 221	24 570	9 332	19 340	28 672
Total	245 421	294 361	539 782	225 241	274 887	500 128	246 023	295 224	541 247

Table 8.1.6.1: Dependency ratios by municipality – 1996, 2001 and 2011

Municipality	Population aged 14 years and younger		Population aged 65 years and older		Population aged between 15 and 64 years			Dependency ratios				
	1996	2001	2011	1996	2001	2011	1996	2001	2011	1996	2001	2011
DC30: Gert Sibande	277 268	317 634	329 426	30 952	36 961	47 075	479 592	545 412	666 692	64,3	65,0	56,5
MP301: Albert Luthuli	77 348	76 236	67 801	8 254	9 054	9 867	94 656	102 461	108 342	90,4	83,2	71,7
MP302: Msukaligwa	35 664	43 566	45 410	4 088	5 114	6 067	65 189	76 133	97 901	61,0	63,9	52,6
MP303: Mkhondo	36 931	56 532	62 923	3 931	5 684	7 280	58 609	80 861	101 779	69,7	76,9	69,0
MP304: Pixley Ka Seme	25 334	31 166	29 050	3 545	4 142	4 733	39 755	45 429	49 452	72,6	77,7	68,3
MP305: Lekwa	28 839	33 136	33 084	3 864	4 422	5 793	56 627	65 707	76 784	57,8	57,2	50,6
MP306: Dipaleseng	12 698	12 708	11 953	1 925	2 043	2 476	23 720	23 867	27 961	61,6	61,8	51,6
MP307: Govan Mbeki	60 454	64 290	79 205	5 345	6 503	10 859	141 036	150 955	204 474	46,7	46,9	44,0
DC31: Nkangala	329 840	339 946	372 788	40 641	44 615	65 419	576 738	633 861	869 923	64,2	60,7	50,4
MP311: Victor Khanye	15 834	17 992	21 285	2 201	2 364	3 562	33 849	35 979	50 604	53,3	56,6	49,1
MP312: Emalahleni	68 078	78 420	99 553	6 658	7 902	14 145	157 740	190 091	281 768	47,4	45,4	40,4
MP313: Steve Tshwete	39 583	42 284	57 569	4 381	4 767	9 849	88 298	95 720	162 413	49,8	49,2	41,5
MP314: Emakhazeni	11 877	13 562	13 201	2 028	2 139	2 745	22 236	27 306	31 271	62,5	57,5	51,0
MP315: Thembisile	94 861	95 449	99 732	10 467	11 708	15 317	134 757	149 426	195 409	78,2	71,7	58,9
MP316: Dr JS Moroka	99 607	92 240	81 447	14 905	15 736	19 801	139 858	135 338	148 457	81,9	79,8	68,2
DC32: Ehlanzeni	536 673	548 850	558 464	57 447	62 639	77 219	743 463	835 636	1 052 932	79,9	73,2	60,4
MP321: Thaba Chweu	19 253	23 214	24 762	2 892	3 609	4 844	42 508	54 858	68 781	52,1	48,9	43,0
MP322: Mbombela	154 909	164 782	175 651	16 551	18 886	24 822	244 104	293 236	388 320	70,2	62,6	51,6
MP323: Umjindi	13 025	14 648	18 420	1 639	1 990	2 807	32 809	37 106	45 930	44,7	44,8	46,2
MP324: Nkomazi	119 236	136 392	139 279	10 987	13 585	16 075	139 887	184 692	237 677	93,1	81,2	65,4
MP325: Bushbuckridge	230 250	209 814	200 352	25 378	24 570	28 671	284 155	265 744	312 224	90,0	88,2	73,4
Mpumalanga	1 143 781	1 206 430	1 260 679	129 040	144 215	189 714	1 799 793	2 014 909	2 589 547	70,7	67,0	56,0

Table 8.1.7.1: Distribution of the population by marital status and municipality – 1996, 2001 and 2011

Municipality	1996					2001					2011				
	Married/ living together	Never married	Widowed	Divorced/ separated	Total	Married/ living together	Never married	Widowed	Divorced/ separated	Total	Married/ living together	Never married	Widowed	Divorced/ separated	Total
DC30:Gert Sibande	227 315	526 242	18 646	7 753	779 956	243 352	618 617	28 941	9 097	900 007	282 623	725 451	25 513	9 608	1 043 194
MP301:Albert Luthuli	37 727	137 936	3 683	1 061	180 407	39 093	140 497	6 733	1 429	187 751	37 159	142 935	4 782	1 135	186 070
MP302: Msukaligwa	32 179	66 665	2 895	1 216	102 955	35 124	83 713	4 394	1 582	124 812	42 016	102 668	3 319	1 375	149 377
MP303: Mkhondo	23 575	72 004	1 967	610	98 156	31 513	107 381	3 571	612	143 077	36 612	132 089	2 432	848	171 982
MP304: Pixley Ka Seme	16 404	49 533	2 057	500	68 494	17 643	59 762	2 771	561	80 737	18 035	62 223	2 378	599	83 235
MP305: Lekwa	27 700	55 768	2 608	1 148	87 224	31 103	67 333	3 573	1 256	103 265	34 951	75 885	3 478	1 348	115 662
MP306: Dipaleseng	12 856	23 279	1 417	616	38 168	11 595	24 623	1 721	679	38 618	13 421	27 039	1 480	450	42 390
MP307:Govan Mbeki	76 873	121 058	4 017	2 601	204 549	77 283	135 308	6 179	2 978	221 747	100 428	182 612	7 644	3 854	294 538
DC31: Nkangala	273 917	636 332	24 607	11 915	946 771	282 392	688 401	34 216	13 414	1 018 422	383 564	862 349	44 503	17 714	1 308 129
MP311:Victor Khanye	17 527	32 838	1 543	739	52 647	17 479	35 896	2 117	843	56 335	24 897	47 162	2 281	1 113	75 452
MP312: Emalahleni	86 253	135 198	5 691	4 810	231 952	98 519	165 284	7 289	5 320	276 413	139 620	238 876	10 590	6 380	395 466
MP313:Steve Tshwete	50 267	77 135	3 277	2 208	132 887	49 329	87 192	4 089	2 162	142 772	86 230	133 603	6 138	3 860	229 832
MP314: Emakhazeni	11 111	23 036	1 115	445	35 707	12 840	27 956	1 608	603	43 007	13 932	31 052	1 566	666	47 216
MP315: Thembisile	54 419	177 315	6 042	2 085	239 861	56 059	189 190	8 769	2 564	256 583	68 503	226 426	12 051	3 479	310 458
MP316:Dr JS Moroka	54 340	190 811	6 939	1 628	253 718	48 166	182 883	10 344	1 921	243 313	50 382	185 230	11 878	2 216	249 705
DC32: Ehlanzeni	336 266	938 339	39 630	26 536	1 340 771	369 900	995 478	53 468	28 279	1 447 125	424 399	1 187 911	53 945	22 360	1 688 615
MP321:Thaba Chweu	21 360	38 043	2 018	1 183	62 604	28 628	48 708	2 874	1 470	81 681	33 899	60 078	2 970	1 441	98 387

MP322: Mbombela	110 637	285 176	10 880	8 801	415494	132 322	318 577	15 633	10 371	476 904	166 008	396 335	16 662	9 790	588 794
MP323: Umjindi	14 939	29 033	967	600	45539	17 795	33 831	1 348	771	53 744	20 138	44 698	1 531	789	67 156
MP324: Nkomazi	62 341	202 636	7 580	3 558	276115	80 092	237 996	11 892	4 688	334 669	92 955	286 549	9 997	3 530	393 030
MP325: Bushbuckridge	126 988	383 452	18 186	12 394	541020	111 063	356 365	21 721	10 979	500 128	111 400	400 252	22 786	6 810	541 248
Mpumalanga	837497	2 100 913	82 883	46 204	3067496	895 644	2 302 496	116 624	50 790	3 365 554	1 090 586	2 775 711	123 961	49 682	4 039 939

Table 8.2.1.1: Distribution of the population aged 20 years and older by highest level of education attained, sex and municipality – 1996, 2001 and 2011

DC30: Gert Sibande	1996			2001			2011		
	Male	Female	Total	Male	Female	Total	Male	Female	Total
	No schooling	54 296	66 885	121 180	52 520	72 821	125 341	32 577	46 961
Some primary	34 423	33 708	68 132	42 025	46 545	88 570	35 219	42 516	77 736
Complete primary	13 871	14 244	28 115	14 174	15 412	29 585	12 171	14 147	26 317
Some secondary	60 125	58 848	118 973	61 968	66 574	128 542	94 225	95 890	190 115
Std 10/ Grade 12	27 758	27 379	55 137	39 534	38 573	78 106	85 075	81 399	166 474
Higher	12 375	8928	21 304	13 011	12 940	25 951	27 943	26 532	54 475
Total	202 848	209 993	412 841	223 232	252 864	476 096	287 210	307 445	594 655
MP301: Albert Luthuli	1996			2001			2011		
	Male	Female	Total	Male	Female	Total	Male	Female	Total
	No schooling	12 344	19 642	31 986	11 686	19 703	31 389	6 945	11 677
Some primary	4 875	6 914	11 789	5 813	8 005	13 818	5 113	7 487	12 600
Complete primary	2 109	2 956	5 065	1 888	2 522	4 409	1 754	2 392	4 146
Some secondary	8 875	10 806	19 682	8 546	10 867	19 413	12 323	14 542	26 865
Std 10/ Grade 12	3 859	4 253	8 113	5 414	6 666	12 079	11 645	13 573	25 217
Higher	1 350	1365	2 715	1 685	2 224	3 909	2 597	3 308	5 905
Total	33 412	45 938	79 350	35 031	49 986	85 017	40 376	52 978	93 354
MP302: Msukaligwa	1996			2001			2011		
	Male	Female	Total	Male	Female	Total	Male	Female	Total
	No schooling	6 812	7 583	14 395	7 741	10 015	17 756	4 459	6 173
Some primary	4 219	4 241	8 461	5 392	5 989	11 381	4 737	5 403	10 140
Complete primary	1 921	1 898	3 819	1 973	2 048	4 021	1 881	1 979	3 859
Some secondary	9 177	8 851	18 027	9 124	9 954	19 079	14 033	14 236	28 269
Std 10/ Grade 12	4 563	4 632	9 195	5 487	5 673	11 160	12 877	12 457	25 335
Higher	1 803	1554	3 357	1 732	2 001	3 733	4 069	4 270	8 339
Total	28 495	28 759	57 254	31 449	35 681	67 130	42 054	44 519	86 573

MP303: Mkhondo	1996			2001			2011		
	Male	Female	Total	Male	Female	Total	Male	Female	Total
	8 178	9 822	18 000	9 692	13 114	22 805	6 653	9 261	15 914
4 199	5 015	9 214	6 520	8 414	14 935	6 209	8 368	14 577	
1 539	1 821	3 360	1 915	2 389	4 304	1 924	2 620	4 544	
6 024	6 248	12 272	7 213	8 047	15 260	11 980	13 605	25 585	
2 778	2 816	5 594	4 289	4 385	8 674	11 025	11 428	22 453	
926	833	1 759	1 180	1 231	2 411	2 133	2 588	4 721	
Total	23 644	26 555	50 199	30 808	37 579	39 924	47 870	87 794	

MP304: Pixley Ka Seme	1996			2001			2011		
	Male	Female	Total	Male	Female	Total	Male	Female	Total
	5 803	7 407	13 211	5 824	8 130	13 954	3 488	5 102	8 591
2 638	3 028	5 666	3 414	4 251	7 664	2 826	3 777	6 604	
677	919	1 595	959	1 264	2 223	880	1 132	2 011	
3 846	4 264	8 110	3 945	4 906	8 851	5 981	6 979	12 960	
1 893	2 052	3 945	2 367	2 571	4 937	5 371	5 583	10 955	
844	650	1 494	921	996	1 916	1 543	1 686	3 230	
Total	15 701	18 321	34 022	17 428	22 117	20 089	24 260	44 350	

MP305: Lekwa	1996			2001			2011		
	Male	Female	Total	Male	Female	Total	Male	Female	Total
	6 025	7 021	13 046	2 535	3 345	5 881	3 370	4 466	7 836
4 524	4 614	9 138	2 346	2 548	4 894	4 762	5 468	10 230	
1 611	1 751	3 362	664	710	1 374	1 503	1 738	3 241	
7 266	7 280	14 546	2 838	3 028	5 866	11 738	12 106	23 844	
3 291	3 147	6 438	1 411	1 411	2 822	9 159	8 411	17 570	
1 557	1 218	2 775	337	385	722	3 697	3 511	7 208	
Total	24 274	25 030	49 304	10 130	11 427	21 558	34 229	35 700	69 929

MP306: Dipaleseng	1996			2001			2011		
	Male	Female	Total	Male	Female	Total	Male	Female	Total
	No schooling	2 810	3 231	6 041	10 108	12 274	22 382	1 368	1 770
Some primary	2 007	2 140	4 147	12 167	10 348	22 514	2 073	2 373	4 446
Complete primary	676	814	1 490	4 783	4 247	9 029	627	685	1 313
Some secondary	2 945	3 010	5 956	22 005	21 127	43 132	4 875	4 508	9 383
Std 10/ Grade 12	1 258	1 287	2 545	15 493	13 336	28 829	3 375	2 911	6 286
Higher	439	344	784	5 565	4 574	10 139	798	699	1 497
Total	10 136	10 827	20 962	70 121	65 906	136 026	13 117	12 946	26 062

DC31: Nkangala	1996			2001			2011		
	Male	Female	Total	Male	Female	Total	Male	Female	Total
	No schooling	52 772	70 586	123 357	56 878	81 071	137 949	36 978	55 134
Some primary	35 415	35 245	70 660	40 374	40 602	80 976	46 229	44 987	91 215
Complete primary	16 907	17 599	34 506	16 196	16 822	33 018	17 261	16 009	33 270
Some secondary	77 598	80 476	158 074	78 825	83 863	162 688	137 107	127 115	264 222
Std 10/ Grade 12	37 624	41 413	79 037	54 423	57 255	111 677	117 163	118 337	235 501
Higher	17 864	13 166	31 030	17 111	17 222	34 333	42 524	39 002	81 526
Total	238 178	258 486	496 664	263 807	296 835	560 642	397 262	400 584	797 845

MP307: Govan Mbeki	1996			2001			2011		
	Male	Female	Total	Male	Female	Total	Male	Female	Total
	No schooling	12 323	12 178	24 502	3 845	4 558	8 403	6 293	8 513
Some primary	11 960	7 756	19 717	3 386	3 511	6 896	9 499	9 640	19 139
Complete primary	5 339	4 085	9 424	1 106	1 179	2 285	3 603	3 601	7 204
Some secondary	21 992	18 389	40 380	4 347	4 461	8 808	33 295	29 914	63 209
Std 10/ Grade 12	10 116	9 192	19 307	2 356	2 178	4 535	31 623	27 036	58 659
Higher	5 457	2 963	8 420	805	749	1 554	13 107	10 470	23 576
Total	67 186	54 563	121 749	15 845	16 636	32 482	97 420	89 173	186 593

MP311: Victor Khanye	1996			2001			2011		
	Male	Female	Total	Male	Female	Total	Male	Female	Total
	4 026	4 389	8 415	12 204	12 670	24 874	2 553	2 976	5 529
2 520	2 576	5 096	12 762	10 320	23 083	3 151	3 014	6 164	
1 040	1 041	2 081	5 759	5 252	11 011	1 126	1 108	2 234	
4 261	4 255	8 516	29 810	28 058	57 868	8 640	7 970	16 610	
2 112	2 104	4 216	21 430	19 898	41 328	6 662	5 821	12 483	
913	642	1 555	7 193	6 222	13 415	1 986	1 598	3 584	
Total	14 872	15 006	29 879	89 158	171 578	24 118	22 486	46 604	

MP312: Emalahleni	1996			2001			2011		
	Male	Female	Total	Male	Female	Total	Male	Female	Total
	9 988	9 330	19 318	12 204	12 670	24 874	7 042	7 951	14 993
9 779	7 898	17 677	12 762	10 320	23 083	12 706	10 477	23 182	
5 158	4 638	9 796	5 759	5 252	11 011	5 661	4 627	10 289	
27 288	25 051	52 339	29 810	28 058	57 868	50 048	41 797	91 845	
12 002	12 742	24 744	21 430	19 898	41 328	42 581	38 507	81 088	
8 058	5 067	13 125	7 193	6 222	13 415	19 822	16 112	35 934	
Total	72 273	64 726	136 999	89 158	171 578	137 859	119 471	257 330	

MP313: Steve Tshwete	1996			2001			2011		
	Male	Female	Total	Male	Female	Total	Male	Female	Total
	6 235	6 889	13 124	6 771	8 510	15 281	5 024	6 094	11 117
4 838	4 474	9 312	5 527	5 292	10 818	7 040	6 075	13 115	
2 543	2 409	4 952	2 530	2 547	5 077	2 744	2 258	5 001	
13 063	12 650	25 713	12 970	13 186	26 156	24 736	21 114	45 849	
7 526	7 902	15 428	10 652	10 291	20 942	26 992	25 300	52 291	
5 137	3 329	8 466	3 955	3 519	7 474	11 787	9 715	21 502	
Total	39 342	37 652	76 994	42 405	85 749	78 321	70 555	148 876	

MP314: Emakhazeni	1996			2001			2011		
	Male	Female	Total	Male	Female	Total	Male	Female	Total
	No schooling	2 843	3 091	5 934	2 917	3 635	6 553	1 903	2 432
Some primary	1 687	1 497	3 184	2 088	1 936	4 024	1 682	1 546	3 228
Complete primary	800	745	1 545	868	880	1 748	740	684	1 423
Some secondary	2 723	2 742	5 465	3 433	3 493	6 926	4 866	4 604	9 470
Std 10/ Grade 12	1 147	1 066	2 214	2 035	2 023	4 058	4 269	4 034	8 303
Higher	404	379	783	711	678	1 388	1 124	1 023	2 147
Total	9 605	9 521	19 126	12 052	12 646	24 697	14 584	14 322	28 906

MP315: Thembisile	1996			2001			2011		
	Male	Female	Total	Male	Female	Total	Male	Female	Total
	No schooling	15 068	23 933	39 001	16 538	26 779	43 317	11 790	19 921
Some primary	8 323	9 477	17 800	8 766	10 458	19 225	11 660	12 788	24 447
Complete primary	3 648	4 430	8 078	3 218	3 786	7 005	3 800	3 944	7 744
Some secondary	14 811	16 961	31 773	14 958	18 102	33 059	27 812	29 252	57 064
Std 10/ Grade 12	6 723	7 222	13 945	9 414	11 223	20 637	21 279	24 879	46 158
Higher	1 606	1 521	3 127	1 996	2 445	4 441	4 080	5 103	9 183
Total	50 178	63 545	113 723	54 890	72 794	127 684	80 421	95 886	176 307

MP316: Dr JS Moroka	1996			2001			2011		
	Male	Female	Total	Male	Female	Total	Male	Female	Total
	No schooling	14 611	22 955	37 566	14 603	24 918	39 521	8 667	15 760
Some primary	8 268	9 323	17 591	7 845	9 084	16 930	9 990	11 088	21 078
Complete primary	3 717	4 336	8 054	2 715	3 177	5 892	3 191	3 388	6 579
Some secondary	15 451	18 817	34 268	13 307	16 563	29 870	21 005	22 380	43 385
Std 10/ Grade 12	8 114	10 377	18 491	8 536	11 641	20 177	15 381	19 798	35 178
Higher	1 747	2 228	3 975	2 451	3 609	6 060	3 725	5 450	9 176
Total	51 909	68 036	119 944	49 457	68 994	118 450	61 959	77 864	139 822

DC32: Ehlanzeni	1996			2001			2011		
	Male	Female	Total	Male	Female	Total	Male	Female	Total
	85 427	134 253	219 680	90 670	145 746	236 415	57 001	96 889	153 890
40 339	44 660	84 999	52 246	56 248	108 494	47 515	55 261	102 775	
17 787	19 809	37 597	18 885	20 108	38 993	17 471	19 711	37 182	
74 748	79 441	154 189	79 398	87 798	167 196	131 993	140 575	272 567	
43 967	50 381	94 349	56 312	63 949	120 262	124 220	144 148	268 369	
15 765	15911	31 677	19 778	24 588	44 366	39 244	48 335	87 579	
Total	278 034	344 456	622 489	317 288	398 436	417 444	504 919	922 363	
MP321: Thaba Chweu	1996			2001			2011		
	Male	Female	Total	Male	Female	Total	Male	Female	Total
	4 041	4 513	8 554	4 770	5 731	10 501	2 786	3 325	6 110
3 415	3 048	6 464	4 896	4 482	9 378	4 052	3 573	7 625	
1 499	1 443	2 942	1 840	1 684	3 525	1 552	1 291	2 843	
5 958	5 409	11 367	7 622	7 280	14 902	11 544	9 593	21 137	
2 718	2 834	5 552	4 675	4 694	9 369	9 386	9 595	18 981	
1 514	1261	2 775	1 521	1 549	3 070	3 126	2 888	6 014	
Total	19 145	18 508	37 654	25 324	25 420	50 744	32 445	62 709	
MP322: Mbombela	1996			2001			2011		
	Male	Female	Total	Male	Female	Total	Male	Female	Total
	23 950	34 209	58 160	25 728	37 528	63 256	15 920	25 249	41 169
14 778	15 614	30 392	19 155	20 142	39 297	16 271	17 449	33 719	
6 942	7 292	14 234	7 271	7 748	15 019	6 059	6 244	12 303	
27 584	28 280	55 864	30 120	32 697	62 816	49 512	49 886	99 398	
17 070	18 248	35 318	26 738	28 276	55 014	55 609	59 929	115 538	
7 299	7243	14 542	8 994	10 432	19 426	20 635	23 447	44 082	
Total	97 623	110 887	208 510	118 006	136 824	254 830	164 005	346 208	

MP323: Umjindi	1996			2001			2011		
	Male	Female	Total	Male	Female	Total	Male	Female	Total
	No schooling	3 524	3 254	6 778	3 404	3 454	6 857	1 823	2 088
Some primary	3 070	1 722	4 791	3 397	2 239	5 636	2 540	2 318	4 857
Complete primary	1 420	901	2 321	1 370	1 027	2 396	883	876	1 759
Some secondary	4 915	3 729	8 644	5 444	4 060	9 504	6 461	6 106	12 568
Std 10/ Grade 12	2 584	2 295	4 878	4 026	3 524	7 550	6 418	5 973	12 391
Higher	1 038	742	1 780	896	956	1 852	1 689	1 881	3 570
Total	16 550	12 643	29 193	18 537	15 259	33 796	19 814	19 241	39 055

MP324: Nkomazi	1996			2001			2011		
	Male	Female	Total	Male	Female	Total	Male	Female	Total
	No schooling	20 419	33 828	54 247	27 229	41 335	68 564	20 173	31 792
Some primary	8 225	9 227	17 453	11 416	11 460	22 876	11 374	12 570	23 944
Complete primary	3 223	3 516	6 740	3 741	3 798	7 540	4 472	4 895	9 367
Some secondary	11 676	11 243	22 919	13 771	14 706	28 477	25 262	26 600	51 862
Std 10/ Grade 12	5 362	6 134	11 496	9 547	11 420	20 966	24 113	28 045	52 159
Higher	1 537	1 877	3 414	2 815	3 656	6 471	5 543	7 637	13 180
Total	50 443	65 826	116 269	68 519	86 375	154 894	90 938	111 539	202 477

MP325: Bushbuckridge	1996			2001			2011		
	Male	Female	Total	Male	Female	Total	Male	Female	Total
	No schooling	33 493	58 448	91 941	29 538	57 698	87 236	16 300	34 438
Some primary	10 850	15 049	25 899	13 382	17 925	31 307	13 278	19 352	32 629
Complete primary	4 703	6 657	11 360	4 662	5 850	10 512	4 506	6 405	10 911
Some secondary	24 615	30 779	55 395	22 440	29 057	51 497	39 214	48 389	87 603
Std 10/ Grade 12	16 234	20 870	37 104	11 327	16 035	27 362	29 030	40 794	69 824
Higher	4 377	4 789	9 166	5 553	7 993	13 546	7 915	12 294	20 210
Total	94 272	136 592	230 864	86 902	134 559	221 461	110 242	161 672	271 914

Mpumalanga	1996			2001			2011		
	Male	Female	Total	Male	Female	Total	Male	Female	Total
No schooling	192 494	271 723	464 217	200 068	299 637	499 705	126 556	198 984	325 540
Some primary	110 177	113 614	223 791	134 646	143 395	278 041	128 963	142 763	271 726
Complete primary	48 565	51 653	100 218	49 255	52 341	101 596	46 903	49 867	96 770
Some secondary	212 471	218 765	431 236	220 190	238 235	458 426	363 324	363 580	726 904
Std 10/ Grade 12	109 349	119 174	228 523	150 269	159 776	310 045	326 459	343 885	670 343
Higher	46 005	38 006	84 010	49 900	54 750	104 650	109 711	113 868	223 579
Total	719 060	812 934	1 531 994	804 327	948 135	1 752 463	1 101 916	1 212 947	2 314 863

Table 8.2.2.1: Distribution of the population aged between 5 and 24 years by school attendance, sex and municipality – 1996, 2001 and 2011

	1996			2001			2011		
	Male	Female	Total	Male	Female	Total	Male	Female	Total
MP301: Albert Luthuli									
Attending	33 623	35 189	68 812	37 928	37 601	75 529	33 795	32 905	66 700
Not Attending	10 624	12 247	22 871	8 955	11 391	20 346	8 529	9 733	18 262
Total	44 248	47 436	91 684	46 883	48 992	95 875	42 324	42 637	84 961
MP302: Msukaligwa									
Attending	14 335	15 016	29 351	18 639	18 384	37 023	20 921	20 222	41 143
Not Attending	6 633	7 255	13 888	8 239	9 513	17 752	8 250	8 544	16 794
Total	20 968	22 271	43 239	26 878	27 897	54 775	29 171	28 766	57 937
MP303: Mkhondo									
Attending	15 105	15 369	30 474	23 638	22 993	46 631	28 190	27 730	55 920
Not Attending	6 810	7 806	14 616	9 955	11 406	21 361	8 998	10 126	19 124
Total	21 915	23 175	45 090	33 593	34 399	67 992	37 188	37 856	75 044
MP304: Pixley Ka Seme									
Attending	10 748	11 140	21 888	13 738	13 786	27 524	13 657	13 410	27 067
Not Attending	4 720	4 987	9 707	4 876	5 828	10 704	3 803	4 267	8 070
Total	15 468	16 127	31 595	18 614	19 614	38 228	17 460	17 678	35 138
MP305: Lekwa									
Attending	12 871	12 973	25 844	15 587	14 915	30 502	15 537	15 129	30 666
Not Attending	5 412	5 631	11 043	5 984	6 788	12 772	5 838	5 472	11 310
Total	18 283	18 604	36 887	21 572	21 702	43 274	21 375	20 601	41 976
MP306: Dipaleseng									
Attending	5 750	5 987	11 737	5 889	5 817	11 706	5 404	5 276	10 680
Not Attending	2 404	2 654	5 058	2 217	2 710	4 927	2 277	2 155	4 432
Total	8 154	8 641	16 795	8 107	8 528	16 635	7 681	7 431	15 112

	1996			2001			2011		
	Male	Female	Total	Male	Female	Total	Male	Female	Total
	MP307: Govan Mbeki								
Attending	23 500	24 876	48 376	28 518	29 078	57 596	35 934	35 058	70 992
Not Attending	12 873	12 730	25 603	13 553	13 893	27 446	16 434	14 542	30 976
Total	36 373	37 606	73 979	42 071	42 970	85 041	52 368	49 600	101 968
	1996			2001			2011		
MP311: Victor Khanye									
Attending	6 819	7 179	13 998	7 466	7 433	14 899	9 328	8 709	18 037
Not Attending	3 751	3 796	7 547	3 863	4 070	7 933	4 368	4 102	8 470
Total	10 570	10 975	21 545	11 329	11 503	22 832	13 696	12 811	26 507
	1996			2001			2011		
MP312: Emalahleni									
Attending	30 302	31 413	61 715	37 011	37 266	74 277	45 997	44 945	90 942
Not Attending	13 244	13 089	26 333	15 046	15 436	30 482	21 863	19 140	41 003
Total	43 546	44 502	88 048	52 057	52 702	104 759	67 861	64 085	131 946
	1996			2001			2011		
MP313: Steve Tshwete									
Attending	17 460	17 523	34 983	20 345	20 512	40 857	26 005	25 605	51 610
Not Attending	7 894	8 145	16 039	7 510	8 259	15 769	11 988	10 631	22 619
Total	25 354	25 668	51 022	27 855	28 771	56 626	37 993	36 236	74 229
	1996			2001			2011		
MP314: Emakhazeni									
Attending	5 026	5 208	10 234	6 167	6 339	12 506	6 059	5 667	11 726
Not Attending	2 268	2 345	4 613	2 773	2 668	5 441	2 460	2 358	4 818
Total	7 294	7 554	14 848	8 941	9 006	17 947	8 519	8 025	16 544
	1996			2001			2011		
MP315: Thembisile									
Attending	43 902	46 492	90 394	47 566	48 369	95 935	49 139	47 783	96 922
Not Attending	13 624	14 668	28 292	13 882	15 589	29 471	14 210	14 926	29 136
Total	57 526	61 160	118 686	61 448	63 958	125 406	63 349	62 709	126 058
	1996			2001			2011		
MP316: Dr JS Moroka									
Attending	46 243	48 435	94 678	47 107	47 809	94 916	41 975	39 561	81 536
Not Attending	13 263	14 389	27 652	11 427	13 446	24 873	9 780	10 696	20 476
Total	59 506	62 824	122 330	58 534	61 255	119 789	51 754	50 257	102 011

	1996			2001			2011		
	Male	Female	Total	Male	Female	Total	Male	Female	Total
	MP321: Thaba Chweu								
Attending	8 194	8 381	16 575	10 368	10 484	20 852	11 049	10 589	21 638
Not Attending	3 944	4 096	8 040	5 005	4 998	10 003	5 007	4 571	9 578
Total	12 138	12 477	24 615	15 373	15 482	30 855	16 055	15 160	31 215
	1996			2001			2011		
MP322: Mbombela									
Attending	66 995	68 294	135 289	79 638	80 106	159 744	84 425	82 984	167 409
Not Attending	25 116	28 444	53 560	26 456	30 114	56 570	28 583	31 311	59 894
Total	92 111	96 738	188 849	106 094	110 220	216 314	113 008	114 295	227 303
	1996			2001			2011		
MP323: Umjindi									
Attending	5 339	5 484	10 823	6 327	6 230	12 557	8 369	8 317	16 685
Not Attending	3 138	3 357	6 495	3 992	3 878	7 870	3 210	3 285	6 495
Total	8 477	8 841	17 318	10 319	10 108	20 426	11 579	11 602	23 181
	1996			2001			2011		
MP324: Nkomazi									
Attending	47 878	47 368	95 246	61 546	59 343	120 889	68 537	67 282	135 819
Not Attending	18 703	22 275	40 978	22 173	25 782	47 955	19 135	21 743	40 878
Total	66 581	69 643	136 224	83 718	85 126	168 844	87 672	89 025	176 697
	1996			2001			2011		
MP325: Bushbuckridge									
Attending	104 132	108 581	212 713	102 712	101 408	204 120	102 653	97 388	200 041
Not Attending	31 230	37 345	68 575	26 380	33 472	59 852	22 699	28 289	50 988
Total	135 362	145 925	281 287	129 092	134 880	263 972	125 352	125 677	251 029

Table 8.3.1.1: Distribution of the population aged between 15 and 64 years by employment status – 1996, 2001 and 2011

Municipality	Employed			Unemployed			Unemployment rates		
	1996	2001	2011	1996	2001	2011	1996	2001	2011
	DC30: Gert Sibande	184 586	179 076	252 045	89 613	134 114	107 363	32,7	42,8
MP301: Albert Luthuli	20 357	20 463	28 593	22 038	22 416	15 878	52,0	52,3	35,7
MP302: Msukaligwa	29 300	27 998	40 519	10 382	17 353	14 707	26,2	38,3	26,6
MP303: Mkhondo	21 550	24 216	29 888	10 524	20 476	16 954	32,8	45,8	36,2
MP304: Pixley Ka Seme	13 270	11 704	13 904	6 558	12 034	7 871	33,1	50,7	36,1
MP305: Lekwa	25 864	26 510	33 334	8 229	15 277	11 637	24,1	36,6	25,9
MP306: Dipaleseng	8 283	7 566	10 483	4 065	6 393	6 207	32,9	45,8	37,2
MP307: Govan Mbeki	65 963	60 619	95 324	27 818	40 165	34 109	29,7	39,9	26,4
DC31: Nkangala	210 284	198 932	346 935	114 248	155 061	150 226	35,2	43,8	30,2
MP311: Victor Khanye	13 416	13 224	21 510	7 119	9 804	8 490	34,7	42,6	28,3
MP312: Emalahleni	74 996	76 583	135 277	27 168	47 677	51 210	26,6	38,4	27,5
MP313: Steve Tshwete	45 923	41 619	81 810	11 311	22 785	20 325	19,8	35,4	19,9
MP314: Emakhazeni	10 297	11 680	13 360	3 462	5 016	4 699	25,2	30,0	26,0
MP315: Thembisile	34 908	33 451	61 291	30 973	35 173	36 058	47,0	51,3	37,0
MP316: Dr JS Moroka	30 744	22 374	33 688	34 215	34 606	29 444	52,7	60,7	46,6
DC32: Ehlanzeni	222 130	247 810	346 437	125 164	185 039	184 428	36,0	42,7	34,7
MP321: Thaba Chweu	21 729	27 916	34 112	4 988	9 384	9 116	18,7	25,2	21,1
MP322: Mbombela	96 463	108 453	160 823	38 889	65 646	63 567	28,7	37,7	28,3
MP323: Umjindi	16 556	17 854	20 894	4 562	6 395	7 681	21,6	26,4	26,9
MP324: Nkomazi	40 149	55 008	72 588	21 446	38 855	37 881	34,8	41,4	34,3
MP325: Bushbuckridge	47 233	38 580	60 459	55 279	64 759	67 041	53,9	62,7	52,6
Mpumalanga	617 000	625 818	945 417	329 025	474 214	442 017	34,8	43,1	31,9

Table 8.4.1.1: Average household size by municipality – 1996, 2001 and 2011

Municipality	Total Population		Total Number of Households		Average Household size				
	1996	2001	2011	1996	2001	2011			
DC30: Gert Sibande	770 953	874 436	1 012 735	173 053	211 618	273 490	4,5	4,1	3,7
MP301: Albert Luthuli	180 754	184 050	183 314	35 543	39 652	47 705	5,1	4,6	3,8
MP302: Msukaligwa	102 537	121 723	143 632	24 876	29 689	40 932	4,1	4,1	3,5
MP303: Mkhondo	97 113	139 827	168 206	18 697	27 888	37 433	5,2	5,0	4,5
MP304: Pixley Ka Seme	68 887	79 406	82 256	14 538	18 002	19 838	4,7	4,4	4,1
MP305: Lekwa	87 569	99 891	111 510	20 463	25 199	31 071	4,3	4,0	3,6
MP306: Dipaleseng	38 902	38 248	41 793	9 450	9 474	12 637	4,1	4,0	3,3
MP307: Govan Mbeki	195 192	211 291	282 024	49 487	61 714	83 874	3,9	3,4	3,4
DC31: Nkangala	946 553	993 262	1 275 922	207 290	245 429	356 911	4,6	4,0	3,6
MP311: Victor Khanye	52 727	54 873	73 667	12 471	13 428	20 548	4,2	4,1	3,6
MP312: Emalahleni	228 246	264 265	382 464	56 290	74 917	119 874	4,1	3,5	3,2
MP313: Steve Tshwete	131 992	138 707	217 073	33 619	36 229	64 971	3,9	3,8	3,3
MP314: Emakhazeni	35 832	39 833	45 642	9 272	9 723	13 722	3,9	4,1	3,3
MP315: Thembisile	240 791	254 730	308 890	47 472	57 548	75 634	5,1	4,4	4,1
MP316: Dr JS Moroka	256 965	240 855	248 186	48 165	53 583	62 162	5,3	4,5	4,0
DC32: Ehlanzeni	1 338 198	1 390 864	1 651 015	289 458	328 377	445 087	4,6	4,2	3,7
MP321: Thaba Chweu	62 348	70 950	91 990	20 071	21 257	33 352	3,1	3,3	2,8
MP322: Mbombela	413 545	452 184	573 877	91 584	112 321	161 773	4,5	4,0	3,5
MP323: Umjindi	48 547	53 744	67 156	11 613	14 458	19 563	4,2	3,7	3,4
MP324: Nkomazi	277 864	334 668	393 030	53 043	71 840	96 202	5,2	4,7	4,1
MP325: Bushbuckridge	544 130	494 779	537 725	113 147	108 500	134 197	4,8	4,6	4,0
Mpumalanga	3 055 704	3 258 562	3 939 672	669 801	785 424	1 075 488	4,6	4,1	3,7

Table 8.4.2.1: Distribution of households by type of main dwelling and municipality – 1996, 2001 and 2011

Municipality	Formal			Traditional			Informal		
	1996	2001	2011	1996	2001	2011	1996	2001	2011
	DC30: Gert Sibande	88166	119 445	197 881	130444	45 307	27 145	92947	46 867
MP301: Albert Luthuli	17693	23 164	36 497	42462	13 747	7 994	39726	2 740	2 857
MP302: Msukaligwa	15243	19 428	30 827	14527	6 210	3 993	2947	4 051	5 715
MP303: Mkhondo	6909	10 765	24 399	5486	14 998	11 048	3931	2 124	1 150
MP304: Pixley Ka Seme	7017	10 523	15 227	10779	5 376	3 103	854	2 103	1 448
MP305: Lekwa	11811	13 692	22 858	5523	2 849	570	1869	8 657	7 414
MP306: Dipaleseng	3992	5 459	8 521	3054	704	70	5335	3 311	3 985
MP307: Govan Mbeki	25501	36 413	59 552	1581	1 422	366	3457	23 879	23 365
DC31: Nkangala	146175	183 469	295 352	1511	18 064	8 646	21333	43 896	49 514
MP311: Victor Khanye	7985	8 334	16 291	20879	1 167	521	36854	3 926	3 158
MP312: Emalahleni	39634	50 254	92 597	1638	4 851	2 721	2643	19 813	23 138
MP313: Steve Tshwete	24765	26 776	53 929	2952	3 516	1 102	12901	5 937	9 190
MP314: Emakhazeni	5558	6 622	11 229	3170	2 226	736	5172	874	1 537
MP315: Thembisile	29756	45 877	64 774	1945	3 603	2 875	1598	8 068	7 678
MP316: Dr JS Moroka	38476	45 605	56 531	6781	2 701	692	10102	5 277	4 813
DC32: Ehlanzeni	202074	264 495	408 463	4394	38 425	12 495	4439	25 457	21 357
MP321: Thaba Chweu	14696	14 603	24 881	67103	1 899	1 316	16368	4 755	6 790
MP322: Mbombela	69143	95 190	149 966	2245	6 884	2 737	2690	10 246	7 816
MP323: Umjindi	7587	9 328	16 171	1 751	1 890	858	2 124	3 194	2 357
MP324: Nkomazi	32192	54 990	88 775	18 155	12 900	3 950	1 930	3 803	2 797
MP325: Bushbuckridge	78456	90 383	128 670	30 949	14 852	3 634	2 442	3 265	1 597
Mpumalanga	436414	567 409	901 696	30949	101 796	48 286	2442	116 220	116 806

Table 8.4.3.1: Distribution of households by tenure status and municipality – 2001 and 2011

Municipalities	Owned and fully paid off		Owned but not yet paid off		Rented		Occupied rent-free	
	2001	2011	2001	2011	2001	2011	2001	2011
DC30: Gert Sibande	80 684	110 649	22 660	27 746	51 811	72 983	56 464	53 422
MP301: Albert Luthuli	23 026	24 241	1 917	2 601	2 596	5 284	12 113	14 069
MP302: Msukaligwa	10 371	14 276	2 837	3 504	8 122	13 409	8 359	8 033
MP303: Mkhondo	8 018	14 772	2 878	4 742	5 801	6 804	11 191	9 201
MP304: Pixley Ka Seme	5 344	6 438	1 326	1 495	6 759	5 972	4 575	5 446
MP305: Lekwa	7 353	12 200	2 901	3 326	6 720	8 915	8 226	5 846
MP306: Dipaleseng	5 071	6 518	661	688	1 669	2 569	2 073	2 678
MP307: Govan Mbeki	21 501	32 204	10 141	11 389	20 144	30 029	9 928	8 149
DC31: Nkangala	122 297	179 878	30 611	30 394	33 669	82 194	58 851	53 245
MP311: Victor Khanye	5 761	9 383	1 144	1 653	2 197	4 708	4 325	4 059
MP312: Emalahleni	25 552	38 519	15 492	15 798	16 216	39 463	17 657	22 874
MP313: Steve Tshwete	13 262	20 877	7 572	8 010	10 941	27 038	4 455	7 254
MP314: Emakhazeni	3 181	6 090	1 838	1 148	1 925	3 881	2 779	1 894
MP315: Thembisile	37 713	55 574	2 772	2 017	1 265	4 400	15 798	10 686
MP316: Dr JS Moroka	36 828	49 437	1 794	1 769	1 124	2 702	13 838	6 478
DC32: Ehlanzeni	195 265	268 257	23 111	22 823	26 315	63 098	83 685	79 335
MP321: Thaba Chweu	6 797	10 756	2 572	1 715	7 201	15 137	4 688	4 511
MP322: Mbombela	70 344	95 150	9 960	12 318	12 112	28 046	19 904	23 241
MP323: Umjindi	4 312	8 899	2 308	1 296	2 344	5 070	5 494	3 898
MP324: Nkomazi	33 487	58 432	4 060	4 682	2 851	9 936	31 442	18 500
MP325: Bushbuckridge	80 325	95 019	4 212	2 812	1 806	4 909	22 157	29 185
Mpumalanga	398 246	558 785	76 382	80 963	111 795	218 275	199 000	186 002

Table 8.4.4.1: Distribution of households with a radio, television, refrigerator, computer, cellphone, landline/ telephone and access to internet by municipality – 2001 and 2011

Municipalities	Radio		Television		Refrigerator		Cellphone		Landline		Computer		Internet	
	2001	2011	2001	2011	2001	2011	2001	2011	2001	2011	2001	2011	2001	2011
DC30: Gert Sibande	160 506	192 949	102 250	205 965	90 700	183 289	62 070	246 433	34 006	20 703	10 828	44 753	10 828	86 728
MP301: Albert Luthuli	29 779	33 529	15 896	34 262	15 668	31 114	10 015	42 616	3 590	1 284	586	4 321	586	11 339
MP302: Msukaligwa	23 646	30 871	15 146	30 179	12 591	25 800	9 094	36 894	4 782	2 715	1 521	6 769	1 521	14 158
MP303: Mkhondo	21 322	26 604	11 231	23 993	9 336	19 738	7 113	32 198	2 475	1 640	702	3 431	702	9 748
MP304: Pixley Ka Seme	14 278	14 994	8 879	15 254	7 508	13 227	4 205	17 761	2 959	1 658	801	2 673	801	5 600
MP305: Lekwa	19 047	21 917	13 831	25 286	11 713	23 342	7 956	28 487	5 625	2 815	1 573	5 406	1 573	10 832
MP306: Dipaleseng	6 883	8 209	4 950	9 432	4 373	8 338	2 017	10 970	1 507	841	340	1 799	340	3 414
MP307: Govan Mbeki	45 552	56 824	32 316	67 561	29 510	61 730	21 670	77 507	13 070	9 749	5 304	20 353	5 304	31 637
DC31: Nkangala	190 035	258 222	144 528	271 779	143 625	255 720	87 374	329 340	46 156	25 947	12 917	68 099	12 917	120 667
MP311: Victor Khanye	9 750	11 783	6 772	15 423	5 707	13 017	4 146	18 343	1 844	1 201	743	3 094	743	5 715
MP312: Emalahleni	57 304	82 859	43 023	83 955	41 806	76 634	32 169	111 954	20 215	11 956	6 559	27 189	6 559	46 323
MP313: Steve Tshwete	29 290	49 780	22 742	53 281	21 989	48 539	15 199	61 115	10 066	8 322	3 542	17 095	3 542	24 234
MP314: Emakhazeni	7 973	10 183	5 272	9 779	5 121	9 192	3 013	12 597	2 438	1 093	504	2 303	504	4 562
MP315: Thembisile	44 698	58 245	33 914	59 521	34 588	57 927	18 651	70 166	6 030	1 801	883	10 793	883	23 608
MP316: Dr JS Moroka	41 020	45 371	32 804	49 820	34 415	50 412	14 196	55 164	5 564	1 573	686	7 624	686	16 226
DC32: Ehlanzeni	225 392	290 187	138 603	329 049	153 993	323 359	94 681	404 170	32 781	21 549	10 022	62 094	10 022	130 591
MP321: Thaba Chweu	14 808	20 172	9 642	21 249	10 372	19 238	6 204	30 115	4 102	2 373	1 209	5 321	1 209	9 322
MP322: Mbombela	80 988	115 278	55 723	125 937	62 970	125 675	39 723	149 084	14 907	12 578	5 994	32 649	5 994	57 690
MP323: Umjindi	10 460	13 383	6 866	13 395	6 844	12 625	3 992	17 449	2 275	1 379	782	3 348	782	6 534
MP324: Nkomazi	44 016	59 553	18 750	64 213	26 401	63 344	17 045	86 101	4 585	2 379	1 058	9 169	1 058	23 955
MP325: Bushbuckridge	75 119	81 800	47 622	104 255	47 406	102 477	27 718	121 419	6 912	2 839	979	11 607	979	33 090
Mpumalanga	575 933	741 358	385 381	806 794	388 318	762 369	244 125	979 942	112 943	68 198	33 767	174 946	33 767	337 986

Table 8.4.5.1: Distribution of households using electricity for lighting, cooking and heating by municipality – 1996, 2001 and 2011

Municipalities	Lighting			Cooking			Heating		
	1996	2001	2011	1996	2001	2011	1996	2001	2011
	DC30: Gert Sibande	76 469	121 262	227 986	54 388	62 972	172 084	52 049	57 671
MP301: Albert Luthuli	8 814	19 987	41 734	4 591	8 361	24 256	4 014	7 523	18 297
MP302: Msukaligwa	10 582	15 741	30 561	9 241	8 684	20 092	8 949	7 917	17 484
MP303: Mkhondo	6 848	9 595	24 997	3 488	4 882	15 458	3 361	4 305	12 494
MP304: Pixley Ka Seme	9 309	12 050	16 907	3 879	4 127	10 379	3 644	4 298	7 767
MP305: Lekwa	9 322	14 953	27 538	8 189	10 821	25 025	7 798	9 716	18 812
MP306: Dipaleseng	6 019	6 379	10 507	2 731	2 676	9 271	2 747	2 554	7 283
MP307: Govan Mbeki	25 576	42 556	75 743	22 270	23 422	67 603	21 536	21 357	53 093
DC31: Nkangala	151 195	194 652	305 871	88 370	117 253	261 250	81 572	115 000	215 689
MP311: Victor Khanye	7 716	8 718	17 437	3 971	3 648	13 052	3 908	3 598	9 018
MP312: Emalahleni	39 554	51 534	88 032	35 239	45 567	84 813	33 283	42 881	75 577
MP313: Steve Tshwete	23 759	27 059	59 026	20 026	19 049	53 113	19 679	19 136	40 953
MP314: Emakhazeni	5 043	6 984	11 474	2 134	3 271	6 794	2 007	3 320	5 088
MP315: Thembisile	39 585	51 048	69 812	10 467	22 314	60 455	9 193	20 735	45 517
MP316: Dr JS Moroka	35 538	49 309	60 091	16 534	23 403	43 024	13 503	25 329	39 536
DC32: Ehlanzeni	115 910	225 235	395 515	72 312	118 656	312 483	64 681	121 056	268 338
MP321: Thaba Chweu	13 617	16 170	28 117	6 860	8 632	23 927	6 283	8 065	20 639
MP322: Mbombela	44 910	81 231	145 922	35 548	59 344	135 542	31 852	55 878	118 202
MP323: Umjindi	5 671	8 222	15 275	4 738	6 592	13 540	4 811	6 701	11 557
MP324: Nkomazi	13 455	34 003	80 153	9 247	18 842	61 940	7 734	18 810	48 694
MP325: Bushbuckridge	38 257	85 609	126 047	15 919	25 246	77 535	14 001	31 602	69 245
Mpumalanga	343 573	541 149	929 372	215 070	298 881	745 817	198 302	293 727	619 256

Table 8.4.6.1: Distribution of households by access to piped water and municipality – 1996, 2001 and 2011

Municipalities	Piped (tap) water in a dwelling or yard		Piped (tap) water on a communal stand		No access to piped (tap) water	
	1996	2001	1996	2001	1996	2001
DC30: Gert Sibande	103 703	128 297	35 158	54 865	32 149	28 456
MP301: Albert Luthuli	14 251	18 507	8 977	11 589	11 807	9 556
MP302: Msukaligwa	16 930	20 060	3 599	6 554	4 151	3 074
MP303: Mkhondo	7 096	10 081	5 460	8 549	5 923	9 258
MP304: Pixley Ka Seme	8 842	11 119	1 055	3 733	4 486	3 151
MP305: Lekwa	14 336	16 948	3 227	7 455	2 677	796
MP306: Dipaleseng	5 352	7 241	2 579	1 632	1 464	601
MP307: Govan Mbeki	36 896	44 340	10 262	15 354	1 641	2 020
DC31: Nkangala	144 770	169 044	32 103	48 928	25 245	27 456
MP311: Victor Khanye	8 412	9 503	1 880	3 055	2 045	869
MP312: Emalahleni	44 805	54 707	8 472	15 154	1 948	5 056
MP313: Steve Tshwete	27 231	28 094	2 477	6 643	2 531	1 492
MP314: Emakhazeni	6 383	7 539	635	1 263	2 095	922
MP315: Thembisile	31 699	41 461	10 388	11 929	4 743	4 158
MP316: Dr JS Moroka	26 239	27 740	8 250	10 884	11 882	14 959
DC32: Ehlangeni	139 000	146 068	96 157	125 908	46 853	56 401
MP321: Thaba Chweu	14 067	15 511	4 261	4 547	1 509	1 200
MP322: Mbombela	59 501	60 887	17 468	36 226	11 446	15 208
MP323: Umjindi	6 908	8 876	2 791	3 550	1 657	2 033
MP324: Nkomazi	24 709	26 708	15 417	35 320	11 761	9 812
MP325: Bushbuckridge	33 816	34 087	56 220	46 265	20 479	28 149
Mpumalanga	387 474	443 409	163 419	229 701	104 246	112 313
						135 200

Table 8.4.7.1: Distribution of households by type of refuse removal and municipality – 1996, 2001 and 2011

Municipalities	Removed by local authorities		Communal/ own refuse dump		No rubbish disposal	
	1996	2001	1996	2001	1996	2001
DC30: Gert Sibande	90 743	116 631	65 086	74 384	14 159	20 603
MP301: Albert Luthuli	4 514	5 453	25 512	27 579	4 762	6 620
MP302: Msukaligwa	16 190	19 454	7 057	8 524	1 195	1 711
MP303: Mkhondo	5 667	9 272	9 769	12 461	3 071	6 155
MP304: Pixley Ka Seme	7 501	9 335	5 689	6 507	1 127	2 160
MP305: Lekwa	11 736	14 885	7 307	8 500	1 093	1 814
MP306: Dipaleseng	5 956	6 270	3 263	2 926	108	278
MP307: Govan Mbeki	39 180	51 963	6 488	7 886	2 805	1 865
DC31: Nkangala	90 414	106 322	100 221	114 826	13 583	24 281
MP311: Victor Khanye	7 986	8 591	3 480	4 211	773	625
MP312: Emalahleni	40 316	50 013	12 453	20 418	2 771	4 486
MP313: Steve Tshwete	25 441	30 890	6 668	4 391	1 187	949
MP314: Emakhazeni	4 629	6 417	3 031	2 623	1 428	683
MP315: Thembisile	5 216	2 393	37 065	45 090	4 498	10 065
MP316: Dr JS Moroka	6 827	8 018	37 524	38 092	2 927	7 473
DC32: Ehlanzeni	53 281	67 287	191 654	223 147	39 486	37 943
MP321: Thaba Chweu	11 747	12 878	6 121	6 965	1 804	1 415
MP322: Mbombela	23 210	29 806	59 931	74 395	6 895	8 119
MP323: Umjindi	6 569	9 981	2 994	3 876	1 902	601
MP324: Nkomazi	6 247	7 732	36 737	54 330	9 318	9 779
MP325: Bushbuckridge	5 508	6 890	85 871	83 581	19 568	18 030
Mpumalanga	234 437	290 240	356 961	412 357	67 228	82 827
						84 979

Table 8.4.8.1: Distribution of households by type of toilet facility and municipality – 1996, 2001 and 2011

Municipalities	Flush/ chemical toilets		Pit latrines		Bucket toilets		No toilets	
	1996	2001	1996	2001	1996	2001	1996	2001
DC30: Gert Sibande	83 445	107 982	54 430	64 197	17 391	15 507	16 681	23 932
MP301: Albert Luthuli	4 494	6 990	26 923	28 146	1 308	1 425	2 627	3 090
MP302: Msukaligwa	15 320	20 447	4 659	6 017	2 959	794	1 854	2 430
MP303: Mkhondo	5 162	8 869	8 109	12 011	1 861	1 059	3 492	5 950
MP304: Pixley Ka Seme	6 609	9 434	4 064	5 639	2 453	828	1 339	2 102
MP305: Lekwa	12 383	14 547	3 386	3 689	1 652	3 036	2 961	3 927
MP306: Dipaleseng	3 902	5 384	2 448	1 517	2 696	1 828	361	745
MP307: Govan Mbeki	35 575	42 312	4 842	7 177	4 463	6 537	4 047	5 688
DC31: Nkangala	89 684	110 713	104 780	119 593	3 578	3 268	8 156	11 855
MP311: Victor Khanye	7 839	9 150	3 086	2 695	1 206	1 001	306	581
MP312: Emalahleni	42 943	53 595	9 848	14 936	879	1 171	2 344	5 215
MP313: Steve Tshwete	26 658	29 592	4 119	3 773	544	439	2 149	2 425
MP314: Emakhazeni	5 259	7 079	2 460	1 287	59	127	1 406	1 231
MP315: Thembisile	2 452	4 250	43 796	51 741	150	200	817	1 358
MP316: Dr JS Moroka	4 533	7 048	41 471	45 162	740	330	1 134	1 044
DC32: Ehlanzeni	51 659	71 098	193 653	195 870	1 157	2 001	41 340	59 407
MP321: Thaba Chweu	12 281	13 522	6 610	6 515	122	81	875	1 140
MP322: Mbombela	24 450	30 314	60 343	69 585	304	807	6 005	11 613
MP323: Umjindi	6 092	8 765	2 873	4 106	29	101	2 562	1 487
MP324: Nkomazi	4 030	8 789	33 639	41 688	193	448	14 970	20 914
MP325: Bushbuckridge	4 806	9 707	90 187	73 976	508	564	16 927	24 253
Mpumalanga	224 788	289 793	352 863	379 660	22 127	20 776	66 177	95 194
			485 791	493 864	9 365	9 365	67 949	67 949

Table 8.4.9.1: Distribution of average household income by municipality – 2001 and 2011

Municipalities	2001	2011
DC30: Gert Sibande	33 662	84 177
MP301: Albert Luthuli	22 832	48 790
MP302: Msukaligwa	31 461	82 167
MP303: Mkhondo	26 935	53 398
MP304: Pixley Ka Seme	23 399	64 990
MP305: Lekwa	38 113	88 440
MP306: Dipaleseng	19 454	61 492
MP307: Govan Mbeki	47 983	125 480
DC31: Nkangala	35 177	89 006
MP311: Victor Khanye	35 281	80 239
MP312: Emalahleni	51 130	120 492
MP313: Steve Tshwete	55 369	134 026
MP314: Emakhazeni	36 170	72 310
MP315: Thembisile	18 229	45 864
MP316: Dr JS Moroka	17 328	40 421
DC32: Ehlanzeni	26 606	64 403
MP321: Thaba Chweu	35 795	82 354
MP322: Mbombela	37 779	92 663
MP323: Umjindi	35 244	81 864
MP324: Nkomazi	19 195	45 731
MP325: Bushbuckridge	17 041	36 569
Mpumalanga	31 186	77 597

Table 8.4.10.1: Distribution of female headed households by municipality – 1996, 2001 and 2011

Municipality	Number of households headed by women			Total Number of Households			% of female headed households		
	1996	2001	2011	1996	2001	2011	1996	2001	2011
DC30: Gert Sibande	55 404	84 051	106 211	173 053	211 618	273 490	32,0	39,7	38,8
MP301: Albert Luthuli	16 828	20 783	23 527	35 543	39 652	47 705	47,3	52,4	49,3
MP302: Msukaligwa	6 452	10 843	15 453	24 876	29 689	40 932	25,9	36,5	37,8
MP303: Mkhondo	5 933	12 752	16 944	18 697	27 888	37 433	31,7	45,7	45,3
MP304: Pixley Ka Seme	4 727	8 079	8 956	14 538	18 002	19 838	32,5	44,9	45,1
MP305: Lekwa	5 270	8 601	11 089	20 463	25 199	31 071	25,8	34,1	35,7
MP306: Dipaleseng	2 337	3 336	4 446	9 450	9 474	12 637	24,7	35,2	35,2
MP307: Govan Mbeki	13 856	19 657	25 797	49 487	61 714	83 874	28,0	31,9	30,8
DC31: Nkangala	73 650	103 147	129 234	207 290	245 429	356 911	35,5	42,0	36,2
MP311: Victor Khanye	2 747	3 893	6 213	12 471	13 428	20 548	22,0	29,0	30,2
MP312: Emalahleni	12 542	24 583	33 468	56 290	74 917	119 874	22,3	32,8	27,9
MP313: Steve Tshwete	7 611	10 705	19 101	33 619	36 229	64 971	22,6	29,5	29,4
MP314: Emakhazeni	2 635	3 598	4 921	9 272	9 723	13 722	28,4	37,0	35,9
MP315: Thembisile	23 304	30 124	34 896	47 472	57 548	75 634	49,1	52,3	46,1
MP316: Dr JS Moroka	24 810	30 245	30 635	48 165	53 583	62 162	51,5	56,4	49,3
DC32: Ehlanzeni	121 768	150 735	196 268	289 458	328 377	445 087	42,1	45,9	44,1
MP321: Thaba Chweu	6 559	7 995	11 078	20 071	21 257	33 352	32,7	37,6	33,2
MP322: Mbombela	31 780	44 919	62 986	91 584	112 321	161 773	34,7	40,0	38,9
MP323: Umjindi	2 540	4 448	6 836	11 613	14 458	19 563	21,9	30,8	34,9
MP324: Nkomazi	23 192	33 058	43 860	53 043	71 840	96 202	43,7	46,0	45,6
MP325: Bushbuckridge	57 697	60 314	71 509	113 147	108 500	134 197	51,0	55,6	53,3
Mpumalanga	250 822	337 933	431 712	669 801	785 424	1 075 488	37,4	43,0	40,1

Table 8.4.11.1: Distribution of child headed households by municipality – 1996, 2001 and 2011

Municipality	Child headed households			Total Number of Households			% of households headed by children		
	1996	2001	2011	1996	2001	2011	1996	2001	2011
DC30: Gert Sibande	1 762	1 894	1 895	173 053	211 618	273 490	1,0	0,9	0,7
MP301: Albert Luthuli	692	630	547	35 543	39 652	47 705	1,9	1,6	1,1
MP302: Msukaligwa	189	185	245	24 876	29 689	40 932	0,8	0,6	0,6
MP303: Mkhondo	190	311	394	18 697	27 888	37 433	1,0	1,1	1,1
MP304: Pixley Ka Seme	139	256	246	14 538	18 002	19 838	1,0	1,4	1,2
MP305: Lekwa	141	171	107	20 463	25 199	31 071	0,7	0,7	0,3
MP306: Dipaleseng	73	93	56	9 450	9 474	12 637	0,8	1,0	0,4
MP307: Govan Mbeki	338	248	300	49 487	61 714	83 874	0,7	0,4	0,4
DC31: Nkangala	3 512	3 485	2 012	207 290	245 429	356 911	1,7	1,4	0,6
MP311: Victor Khanye	71	48	89	12 471	13 428	20 548	0,6	0,4	0,4
MP312: Emalaheni	264	383	357	56 290	74 917	119 874	0,5	0,5	0,3
MP313: Steve Tshwete	189	99	219	33 619	36 229	64 971	0,6	0,3	0,3
MP314: Emakhazeni	98	42	66	9 272	9 723	13 722	1,1	0,4	0,5
MP315: Thembisile	1 391	1 336	644	47 472	57 548	75 634	2,9	2,3	0,9
MP316: Dr JS Moroka	1 499	1 578	637	48 165	53 583	62 162	3,1	2,9	1,0
DC32: Ehlanzeni	6 275	5 748	5 405	289 458	328 377	445 087	2,2	1,8	1,2
MP321: Thaba Chweu	235	187	157	20 071	21 257	33 352	1,2	0,9	0,5
MP322: Mbombela	1 091	1 134	1 047	91 584	112 321	161 773	1,2	1,0	0,6
MP323: Umjindi	47	60	110	11 613	14 458	19 563	0,4	0,4	0,6
MP324: Nkomazi	1 068	1 154	1 463	53 043	71 840	96 202	2,0	1,6	1,5
MP325: Bushbuckridge	3 835	3 213	2 629	113 147	108 500	134 197	3,4	3,0	2,0
Mpumalanga	11 550	11 127	9 311	669 801	785 424	1 075 488	1,7	1,4	0,9