

Census 2011 Municipal report

Gauteng

Report No. 03-01-55

Statistics South Africa

Pali Lehohla
Statistician-General

Census 2011 Municipal report – Gauteng/ Statistics South Africa

Published by Statistics South Africa, Private Bag X44, Pretoria 0001

© Statistics South Africa, 2012

Users may apply or process this data, provided Statistics South Africa (Stats SA) is acknowledged as the original source of the data; that it is specified that the application and/ or analysis is the result of the user's independent processing of the data; and that neither the basic data nor any reprocessed version or application thereof may be sold or offered for sale in any form whatsoever without prior permission from Stats SA.

Stats SA Library Cataloguing-in-Publication (CIP) Data

Census 2011 Municipal report – Gauteng/ Statistics South Africa, 2012

**Report no.: 03-01-55
72 pp**

ISBN 978-0-621-41465-3

A complete set of Stats SA publications is available at Stats SA Library and the following libraries:

National Library of South Africa, Pretoria Division
National Library of South Africa, Cape Town Division
Library of Parliament, Cape Town
Bloemfontein Public Library
Natal Society Library, Pietermaritzburg
Johannesburg Public Library
Eastern Cape Library Services, King William's Town
Central Regional Library, Polokwane
Central Reference Library, Nelspruit
Central Reference Collection, Kimberley
Central Reference Library, Mmabatho

This report is available on the Stats SA website: www.statssa.gov.za

For **technical enquiries** please contact:

Diego Iturralde
Tel: 012 310 8922
Fax: 086 670 9723
Email: diegoi@statssa.gov.za

For **dissemination enquiries** contact Printing and Distribution, Statistics South Africa

Ina du Plessis
Email: inadp@statssa.gov.za

Table of contents

Introduction.....	1
7. Gauteng	2
7.1 Demographics	2
7.1.1 Age-sex structure.....	2
7.1.2 Population growth rates.....	8
7.1.3 Sex ratios.....	9
7.1.4 Population group.....	10
7.1.5 Functional age groups.....	11
7.1.6 Dependency ratios.....	12
7.1.7 Marital status.....	13
7.2 Education.....	14
7.2.1 Highest level of education attained.....	14
7.2.2 School attendance.....	15
7.3 Labour market.....	16
7.3.1 Unemployment Rate.....	16
7.4 Housing.....	17
7.4.1 Average household size.....	17
7.4.2 Type of main dwelling.....	18
7.4.3 Tenure status.....	19
7.4.4 Household goods.....	20
7.4.5 Electricity for lighting, cooking, heating.....	21
7.4.6 Access to piped water.....	22
7.4.7 Refuse disposal.....	23
7.4.8 Toilet facilities.....	24
7.4.9 Average household income.....	25
7.4.10 Female-headed households.....	26
7.4.11 Child-headed households.....	27
Appendix: Gauteng.....	28

List of figures

Figure 7.1.1.1: Distribution of population by age and sex, Gauteng – 1996, 2001 and 2011	2
Figure 7.1.1.2: Distribution of population by age and sex, Sedibeng district – 1996, 2001 and 2011	3
Figure 7.1.1.3: Distribution of population by age and sex, West Rand district – 1996, 2001 and 2011	4
Figure 7.1.1.4: Distribution of population by age and sex, Ekurhuleni district – 1996, 2001 and 2011	5
Figure 7.1.1.5: Distribution of population by age and sex, City of Johannesburg district – 1996, 2001 and 2011	6
Figure 7.1.1.6: Distribution of population by age and sex, City of Tshwane district – 1996, 2001 and 2011	7
Figure 7.1.2.1: Population growth rates by district municipality – 1996, 2001 and 2011	8
Figure 7.1.3.1: Sex ratios by district municipality – 1996, 2001 and 2011	9
Figure 7.1.4.1: Percentage distribution of the population by population group and district municipality – 1996, 2001 and 2011	10
Figure 7.1.5.1: Distribution of the population by functional age groups and district municipality – 1996, 2001 and 2011	11
Figure 7.1.6.1: Dependency ratios by district municipality – 1996, 2001 and 2011	12
Figure 7.1.7.1: Distribution of the population by marital status and district municipality – 1996, 2001 and 2011	13
Figure 7.2.1.1: Distribution of the population aged 20 years and older by highest level of education and district municipality – 1996, 2001 and 2011	14
Figure 7.2.2.1: Distribution of the population aged 5–24 years by school attendance and district municipality – 1996, 2001 and 2011	15
Figure 7.3.1.1: Unemployment rate (official definition) by district municipality – 1996, 2001 and 2011	16
Figure 7.4.1.1: Average household size by district municipality – 1996, 2001 and 2011	17
Figure 7.4.2.1: Percentage distribution of households by type of main dwelling and district municipality – 1996, 2001 and 2011	18
Figure 7.4.3.1: Distribution of households by tenure status and district municipality – 2001 and 2011	19
Figure 7.4.4.1: Distribution of households with a radio, television, computer, refrigerator, cellphone, landline/ telephone, and access to internet, by district municipality – 1996, 2001 and 2011	20
Figure 7.4.5.1: Distribution of households using electricity for lighting, cooking and heating by district municipality – 1996, 2001 and 2011	21
Figure 7.4.6.1: Distribution of households having access to piped water by district municipality – 1996, 2001 and 2011	22
Figure 7.4.7.1: Distribution of households by refuse disposal and district municipality – 1996, 2001 and 2011	23
Figure 7.4.8.1 Distribution of households by type of toilet facility and district municipality – 1996, 2001 and 2011	24
Figure 7.4.9.1: Distribution of average household income by district municipality – 2001 and 2011	25
Figure 7.4.10.1: Distribution of female headed households by district municipality – 1996, 2001 and 2011	26
Figure 7.4.11.1: Distribution of child headed households by district municipality – 1996, 2001 and 2011	27

List of tables

Age and sex structure, DC42: Sedibeng District	28
Table 7.1.1.1: Distribution of population by age and sex, Emfuleni municipality – 1996, 2001 and 2011	28
Table 7.1.1.2: Distribution of population by age and sex, Midvaal municipality – 1996, 2001 and 2011	29
Table 7.1.1.3: Distribution of population by age and sex, Lesedi municipality – 1996, 2001 and 2011.....	30
Age and sex structure, DC48: West Rand District	31
Table 7.1.1.4: Distribution of population by age and sex, Mogale City municipality – 1996, 2001 and 2011	31
Table 7.1.1.5: Distribution of population by age and sex, Randfontein municipality – 1996, 2001 and 2011.....	32
Table 7.1.1.6: Distribution of population by age and sex, Westonaria municipality – 1996, 2001 and 2011.....	33
Table 7.1.1.7: Distribution of population by age and sex, Merafong City municipality – 1996, 2001 and 2011.....	34
Table 7.1.1.8: Distribution of population by age and sex, Ekurhuleni metropolitan municipality – 1996, 2001 and 2011	35
Table 7.1.1.9: Distribution of population by age and sex, City of Johannesburg metropolitan municipality – 1996, 2001 and 2011	36
Table 7.1.1.10: Distribution of population by age and sex, City of Tshwane metropolitan municipality – 1996, 2001 and 2011	37
Table 7.1.2.1: Population growth rates by municipality – 1996, 2001 and 2011	38
Table 7.1.3.1: Sex ratios by municipality – 1996, 2001 and 2011	39
Table 7.1.4.1: Distribution of population by population group (Black African), sex and municipality – 1996, 2001 and 2011	40
Table 7.1.4.1: Distribution of population by population group (Coloured), sex and municipality – 1996, 2001 and 2011	41
Table 7.1.4.1: Distribution of population by population group (Indian/Asian), sex and municipality – 1996, 2001 and 2011	42
Table 7.1.4.1: Distribution of population by population group (White), sex and municipality – 1996, 2001 and 2011.....	43
Table 7.1.5.1: Distribution of population by functional age groups, sex and municipality – 1996, 2001 and 2011.....	44
Table 7.1.6.1: Dependency ratios by municipality – 1996, 2001 and 2011.....	47
Table 7.1.7.1: Distribution of population by marital status and municipality – 1996, 2001 and 2011	48
Table 7.2.1.1: Distribution of the population aged 20 years and older by level of education attained, sex and municipality – 1996, 2001 and 2011	49
Table 7.2.2.1: Distribution of the population aged 5–24 years by school attendance, sex and municipality – 1996, 2001 and 2011.....	54
Table 7.3.1.1: Distribution of the population aged between 15 and 64 years by employment status and municipality – 1996, 2001 and 2011	56

Table 7.4.1.1: Distribution of average household size by municipality – 1996, 2001 and 2011.....	58
Table 7.4.2.1: Distribution of households by type of main dwelling and municipality – 1996, 2001 and 2011	59
Table 7.4.3.1: Distribution of households by tenure status and municipality – 1996, 2001 and 2011	60
Table 7.4.4.1: Distribution of households with a radio, television, refrigerator, computer, cellphone, landline and access to internet by municipality – 2001 and 2011	61
Table 7.4.5.1: Distribution of households using electricity for lighting, cooking and heating by municipality – 1996, 2001 and 2011	62
Table 7.4.6.1: Distribution of households having access to piped water – 1996, 2001 and 2011	63
Table 7.4.7.1: Distribution of households by type of refuse removal and municipality – 1996, 2001 and 2011	64
Table 7.4.8.1: Distribution of households by type of toilet facility and municipality – 1996, 2001 and 2011.....	65
Table 7.4.9.1: Distribution of average household income by municipality – 2001 and 2011	66
Table 7.4.10.1: Distribution of female headed households by municipality – 1996, 2001 and 2011	67
Table 7.4.11.1: Distribution of child headed households by municipality – 1996, 2001 and 2011.....	68

Introduction

South Africa has had three censuses since the first general elections in 1994. The first census was conducted in 1996, the second one followed five years later (2001), whilst the recent census was conducted just over a year ago (2011). In this publication, data from the three censuses are compared.

The following points are brought to the attention of the reader of this publication:

- Comparisons of the results of labour market indicators in the post-apartheid population censuses over time have been a cause for concern. Improvements to key questions over the years mean that the labour market outcomes based on the post-apartheid censuses have to be analysed with caution. Such analysis will be the subject of research published in a separate publication in 2013. The differences in the results over the years may be partly attributable to improvements in the questionnaire since 1996 rather than to actual developments in the labour market. The numbers published in this volume for the 1996, 2001, and 2011 censuses are therefore not comparable over time and are higher from those published by Statistics South Africa in the surveys designed specifically for capturing official labour market results.
- For purposes of comparison over the period 1996–2011, certain categories of responses to questions in the censuses of 1996, 2001 and 2011, have either been merged or separated.
- The tenure status question for 1996 has been dropped since the question asked was totally unrelated to that asked thereafter. Comparisons for 2001 and 2011 do, however, remain.
- All household variables are controlled for housing units only and hence, exclude all collective living arrangements as well as transient populations.
- The slight differences in totals for annual household income as compared to that published in the Statistical Release of Census 2011 are due to rounding.
- When making comparisons of any indicator it must be taken into account that the time period between the first two censuses is five years, and that between the second and third censuses is ten years. Although the census captures information at one given point in time, the period available for an indicator to change is different.

7. Gauteng

7.1 Demographics

7.1.1 Age-sex structure

Figures 7.1.1.1 to 7.1.1.6 show the pyramids for Gauteng and its districts respectively. The pyramids indicate that the majority of the population is in the adult ages.

Figure 7.1.1.1: Distribution of population by age and sex, Gauteng – 1996, 2001 and 2011

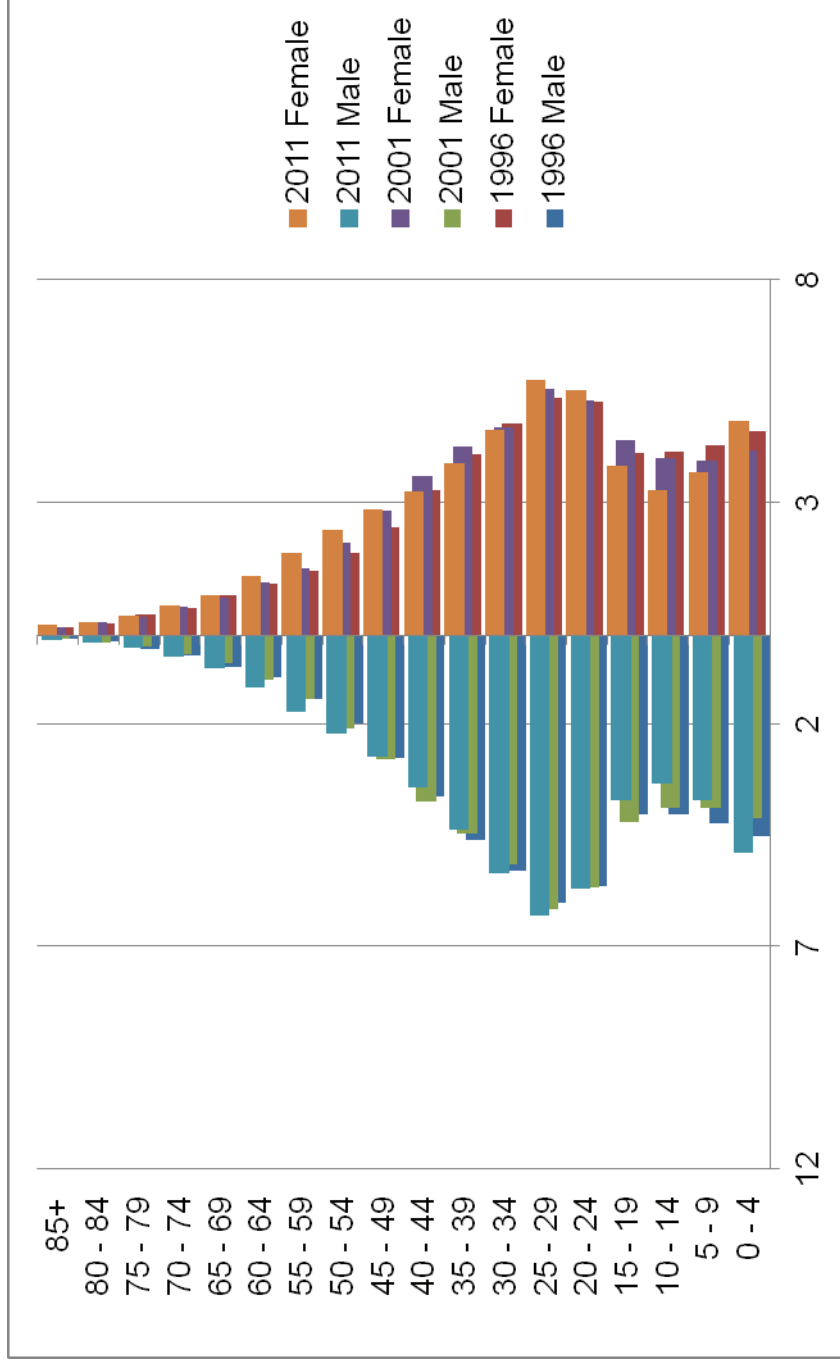


Figure 7.1.1.2: Distribution of population by age and sex, Sedibeng district – 1996, 2001 and 2011

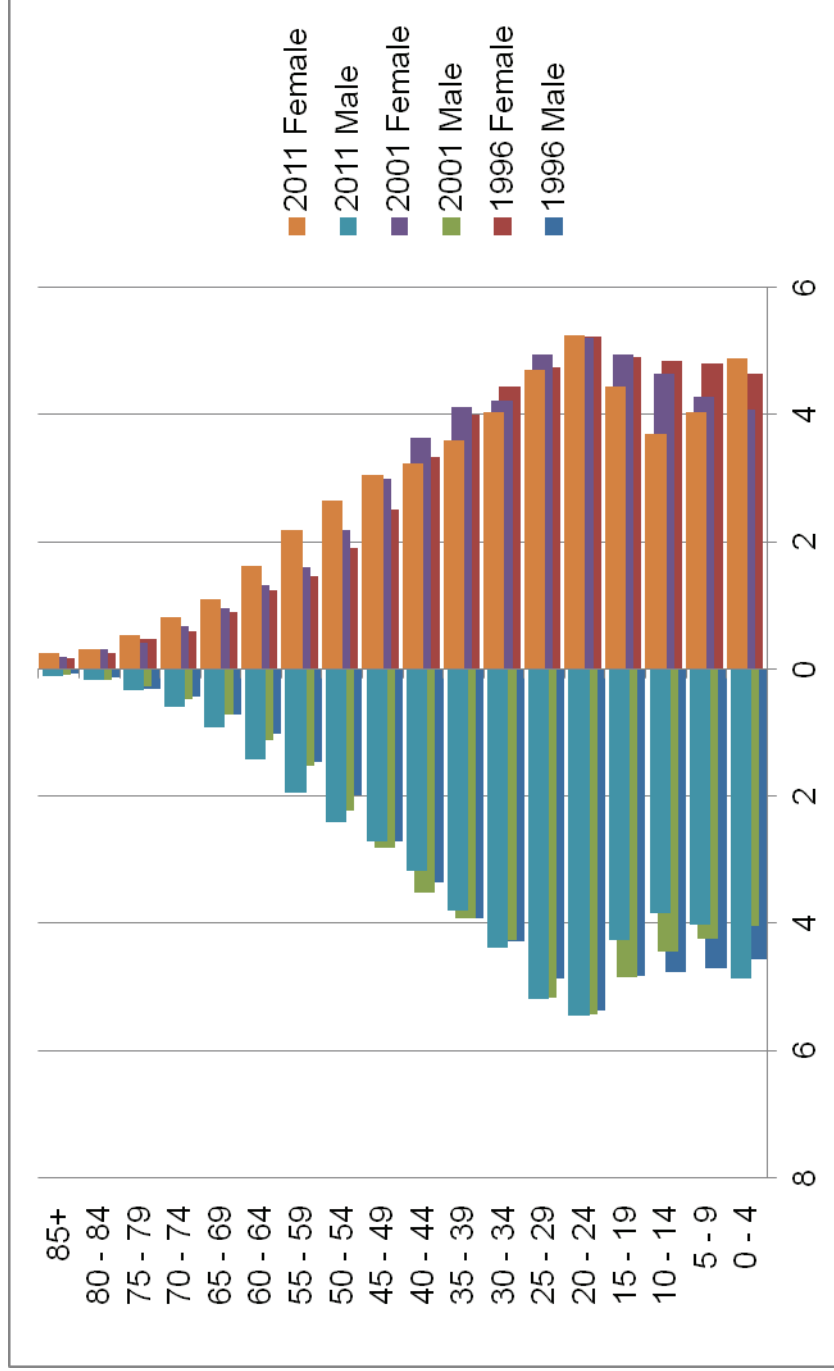


Figure 7.1.1.3: Distribution of population by age and sex, West Rand district – 1996, 2001 and 2011

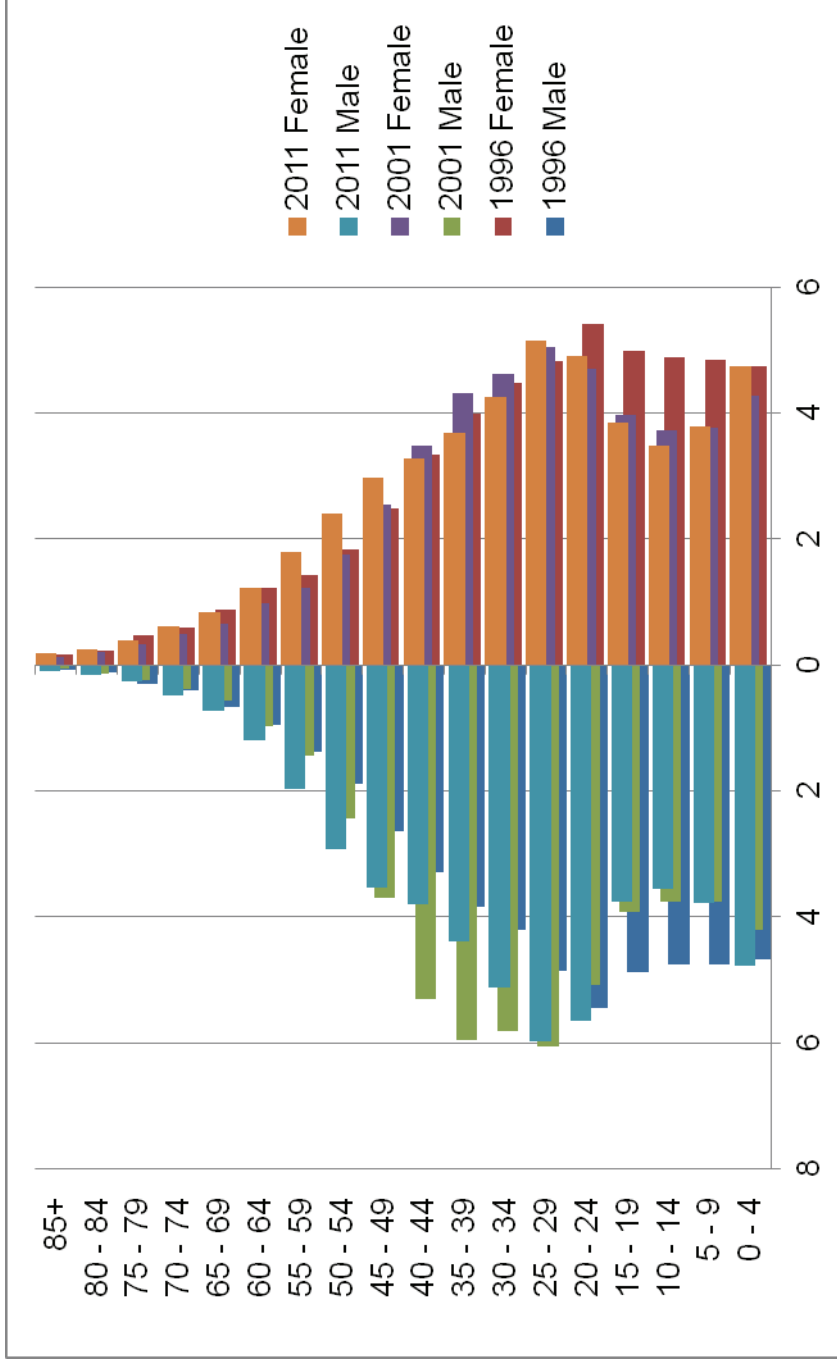


Figure 7.1.1.4: Distribution of population by age and sex, Ekurhuleni district – 1996, 2001 and 2011

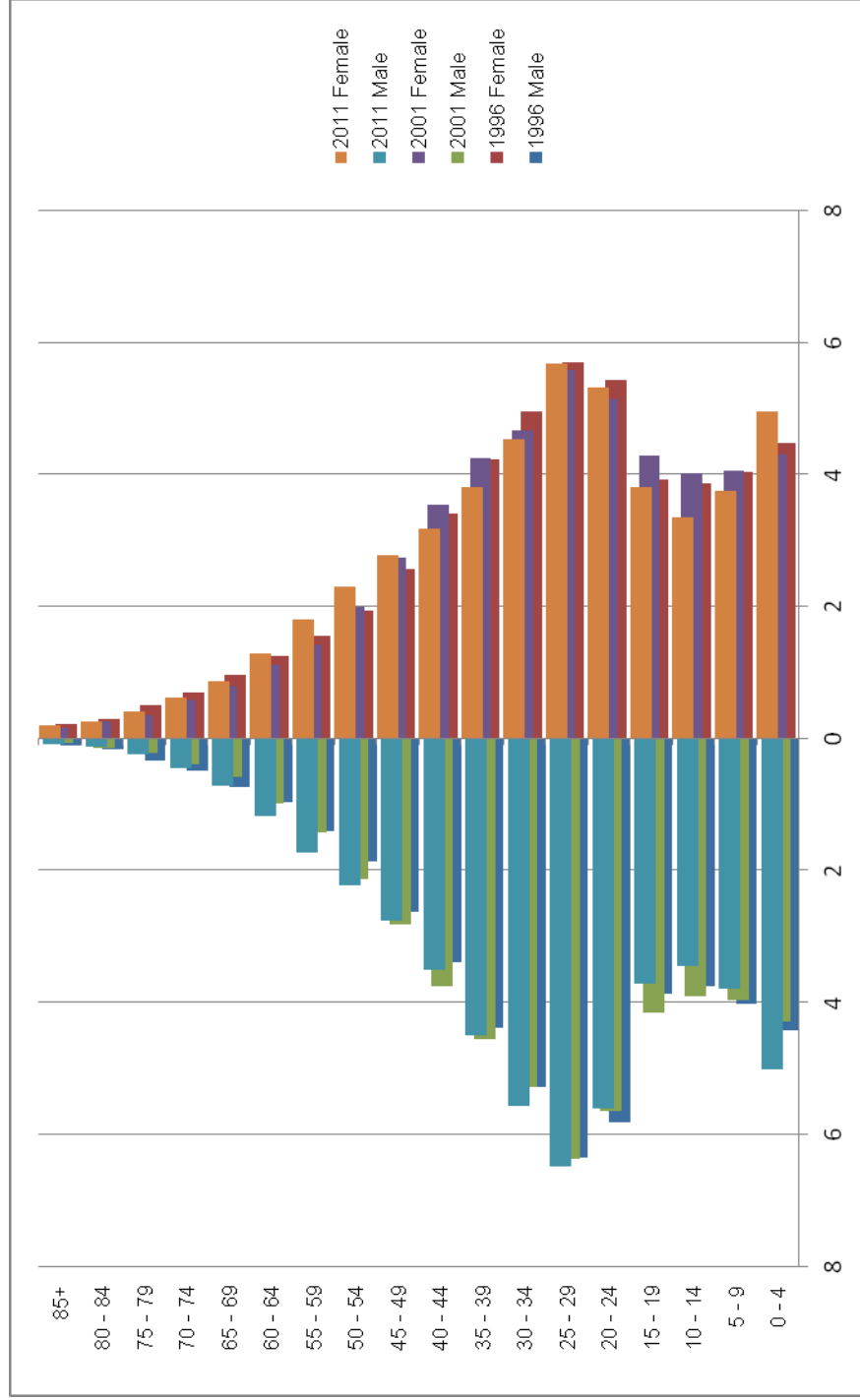


Figure 7.1.1.5: Distribution of population by age and sex, City of Johannesburg district – 1996, 2001 and 2011

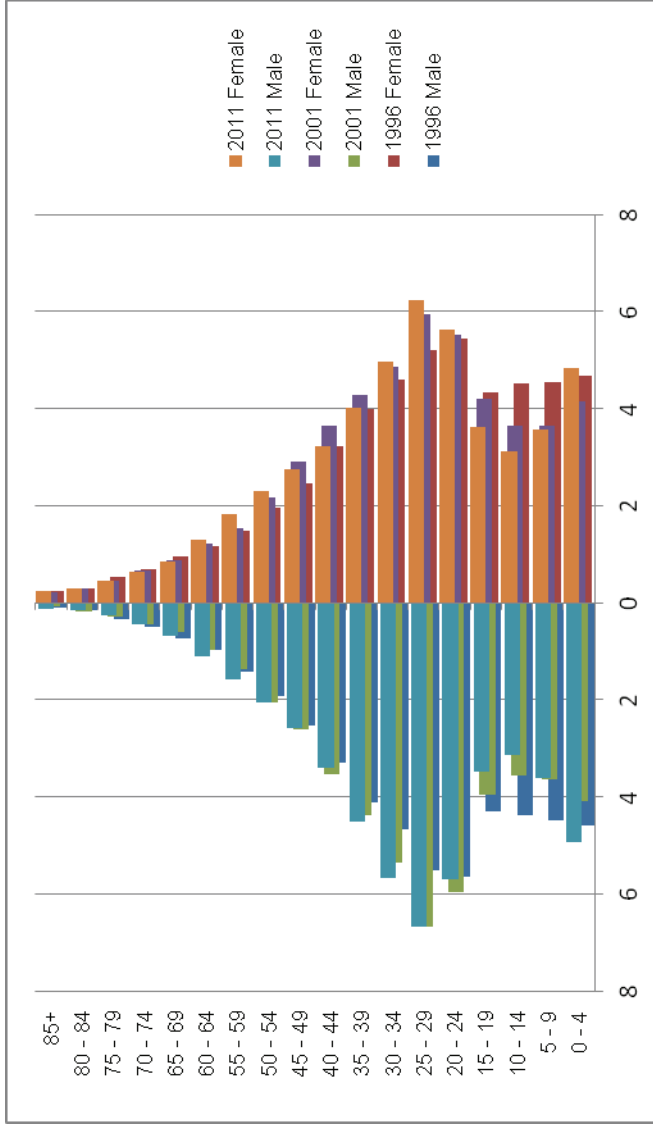
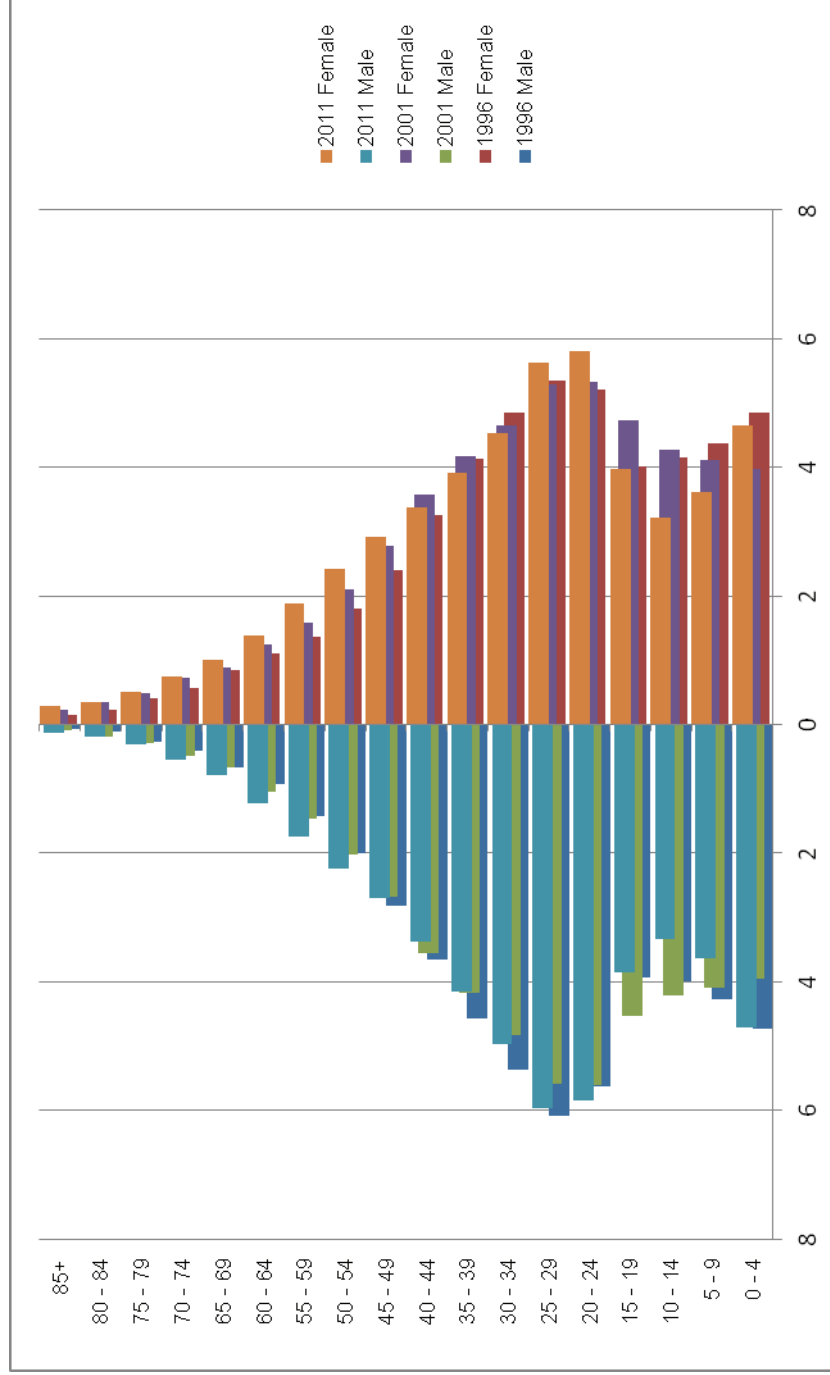


Figure 7.1.1.6: Distribution of population by age and sex, City of Tshwane district – 1996, 2001 and 2011



7.1.2 Population growth rates

Figure 7.1.2.1: Population growth rates by district municipality – 1996, 2001 and 2011

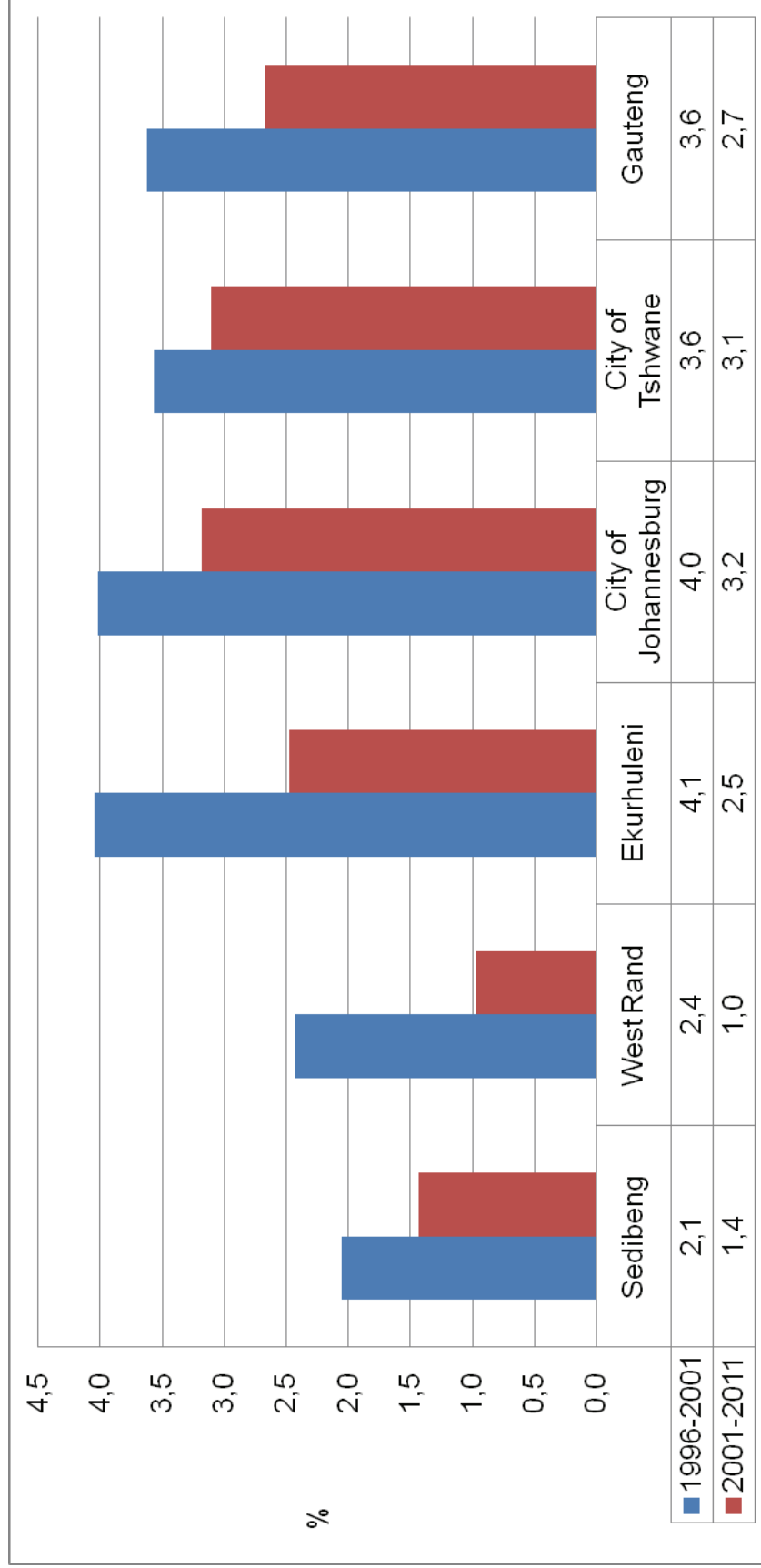


Figure 7.1.2.1 shows that the province has experienced a slower population growth for the period 2001–2011 compared with that of 1996–2001. The provincial population is estimated to have grown by 3,6% and 2,7% respectively. Similar growth patterns are also seen in all its districts.

7.1.3 Sex ratios

Figure 7.1.3.1: Sex ratios by district municipality – 1996, 2001 and 2011

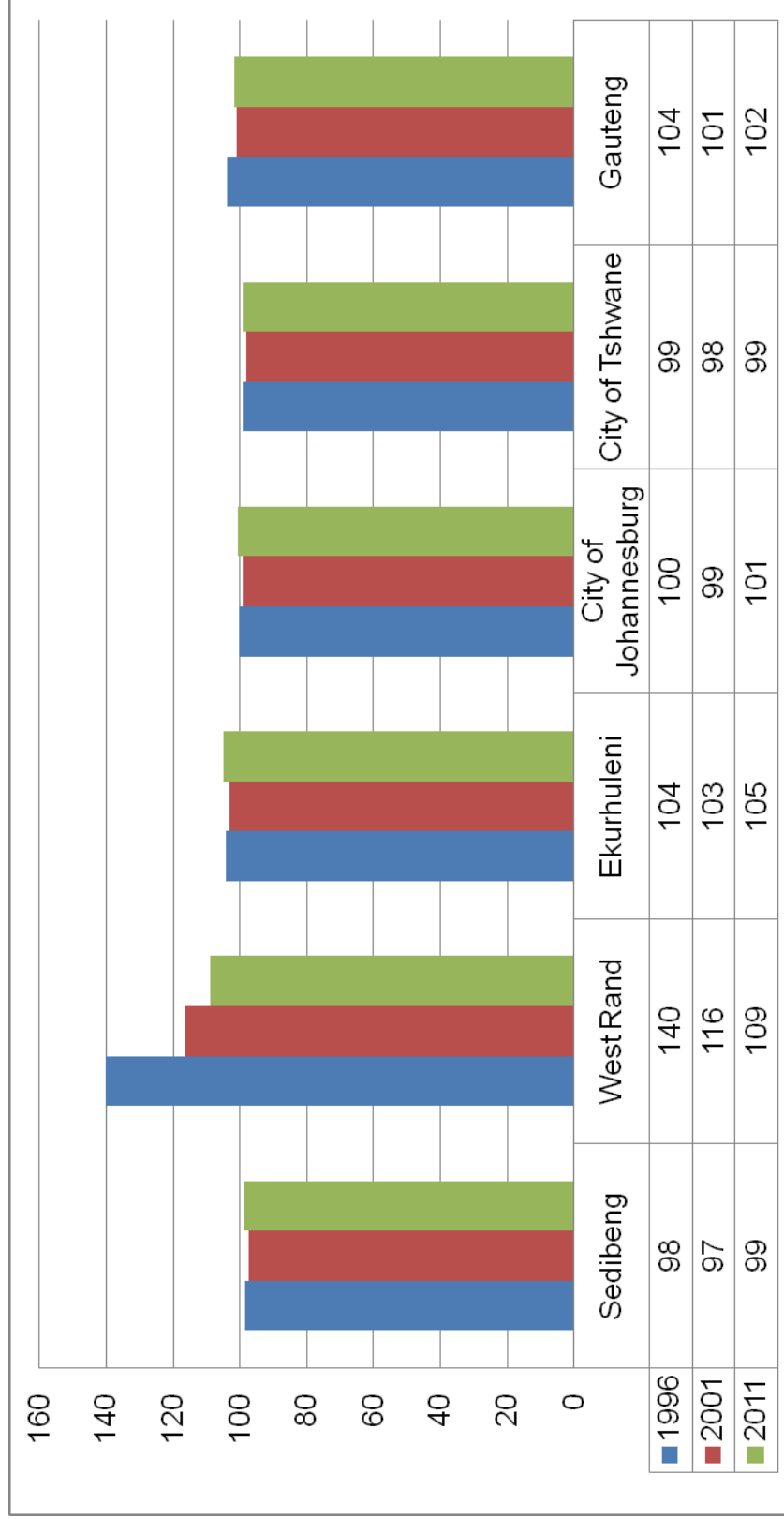


Figure 7.1.3.1 shows that there are more males than females across all districts with the exception of Sedibeng and the City of Tshwane. West Rand shows a consistently higher than average proportion of males; though it has declined over time.

7.1.4 Population group

Figure 7.1.4.1: Percentage distribution of the population by population group and district municipality – 1996, 2001 and 2011

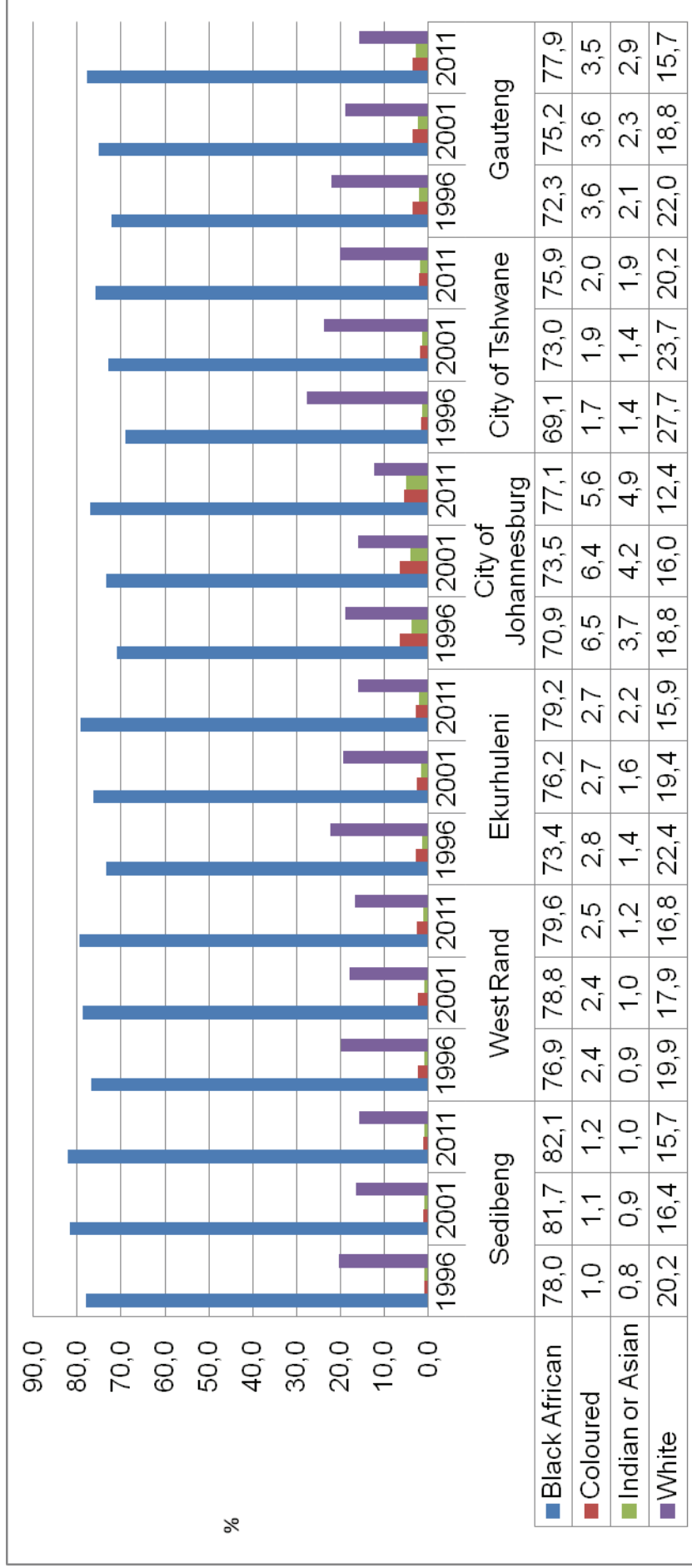


Figure 7.1.4.1 shows that the Black African, the Coloured and Indian/ Asian population groups constitute the majority and the lowest respectively. Strikingly, unlike the other population groups, the proportion of the white population has decreased substantially.

7.1.5 Functional age groups

Figure 7.1.5.1: Distribution of the population by functional age groups and district municipality – 1996, 2001 and 2011

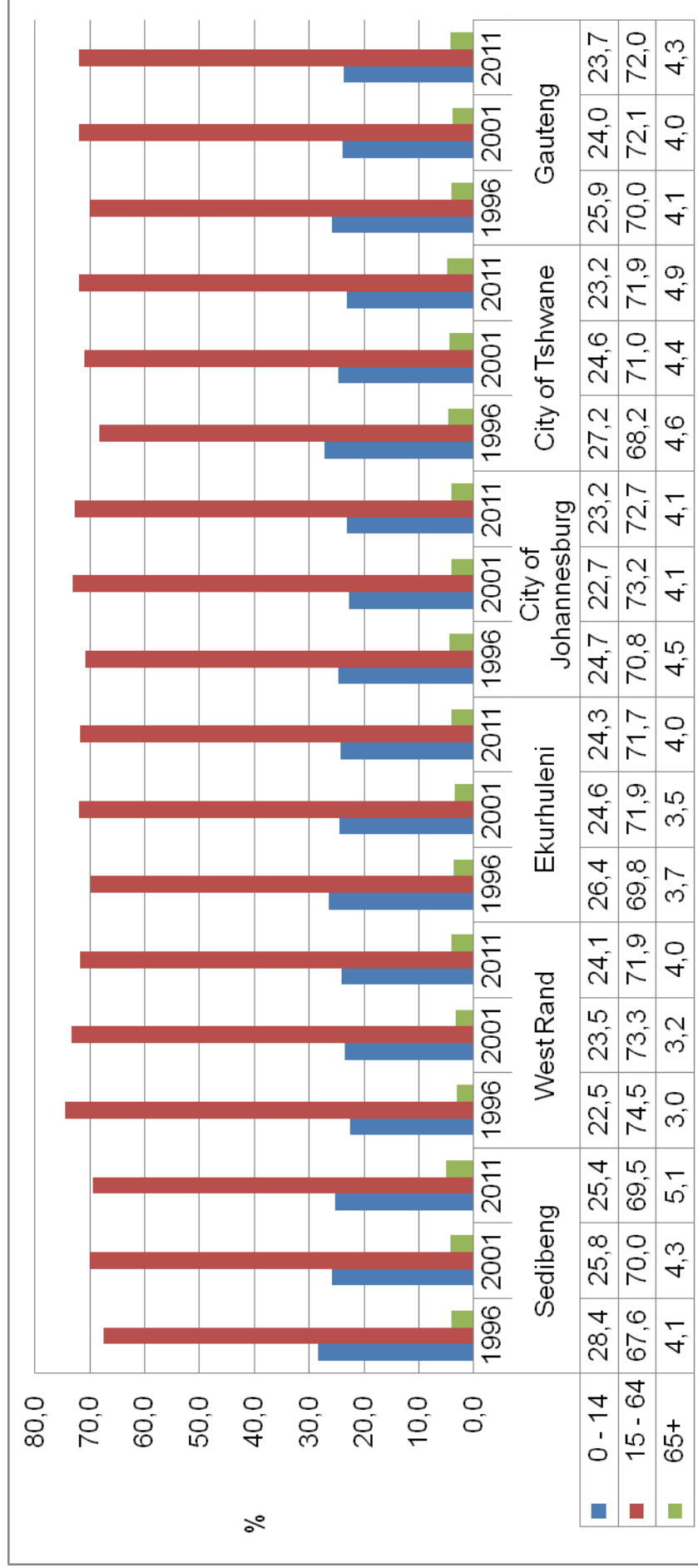


Figure 7.1.5.1 shows a decline in the proportion of the population aged 0–14 in all the districts except in West Rand, an increase in the proportion of persons aged 15–64 and 65+ in the province over time. In the province, the proportion of the population aged 0–14 and 15–64 constitute approximately a quarter and more than two-thirds of the population respectively.

7.1.6 Dependency ratios

Dependency ratios provide insights into the burden borne by those who are in the working age group (15–64) to support those aged 0–14 and 65+ years.

Figure 7.1.6.1: Dependency ratios by district municipality – 1996, 2001 and 2011

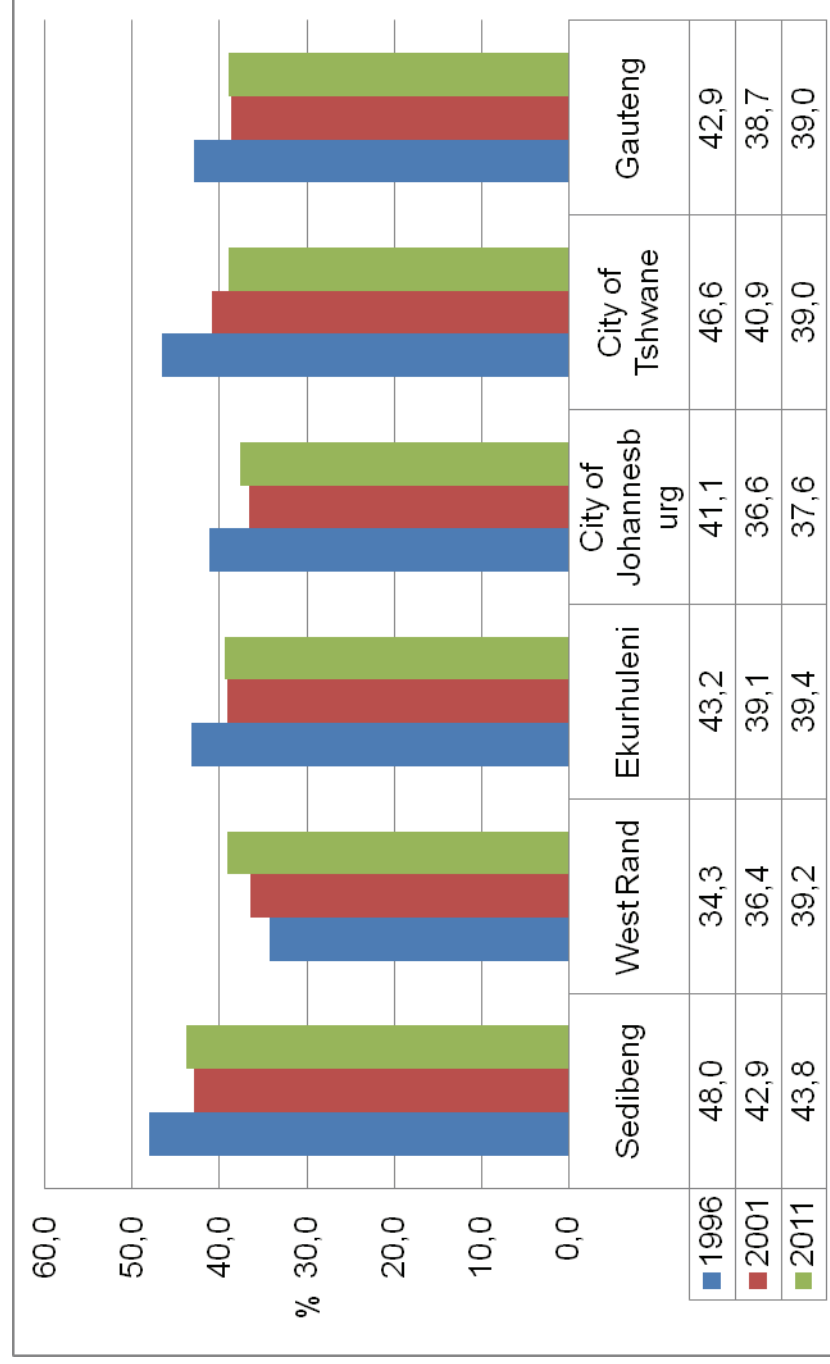


Figure 7.1.6.1 suggests that the dependency ratio has been steadily declining with West Rand consistently recording a lower than average ratio for the province in 1996, 2001 and almost the same for 2011.

7.2.2 School attendance

Figure 7.2.2.1: Distribution of the population aged 5–24 years by school attendance and district municipality – 1996, 2001 and 2011

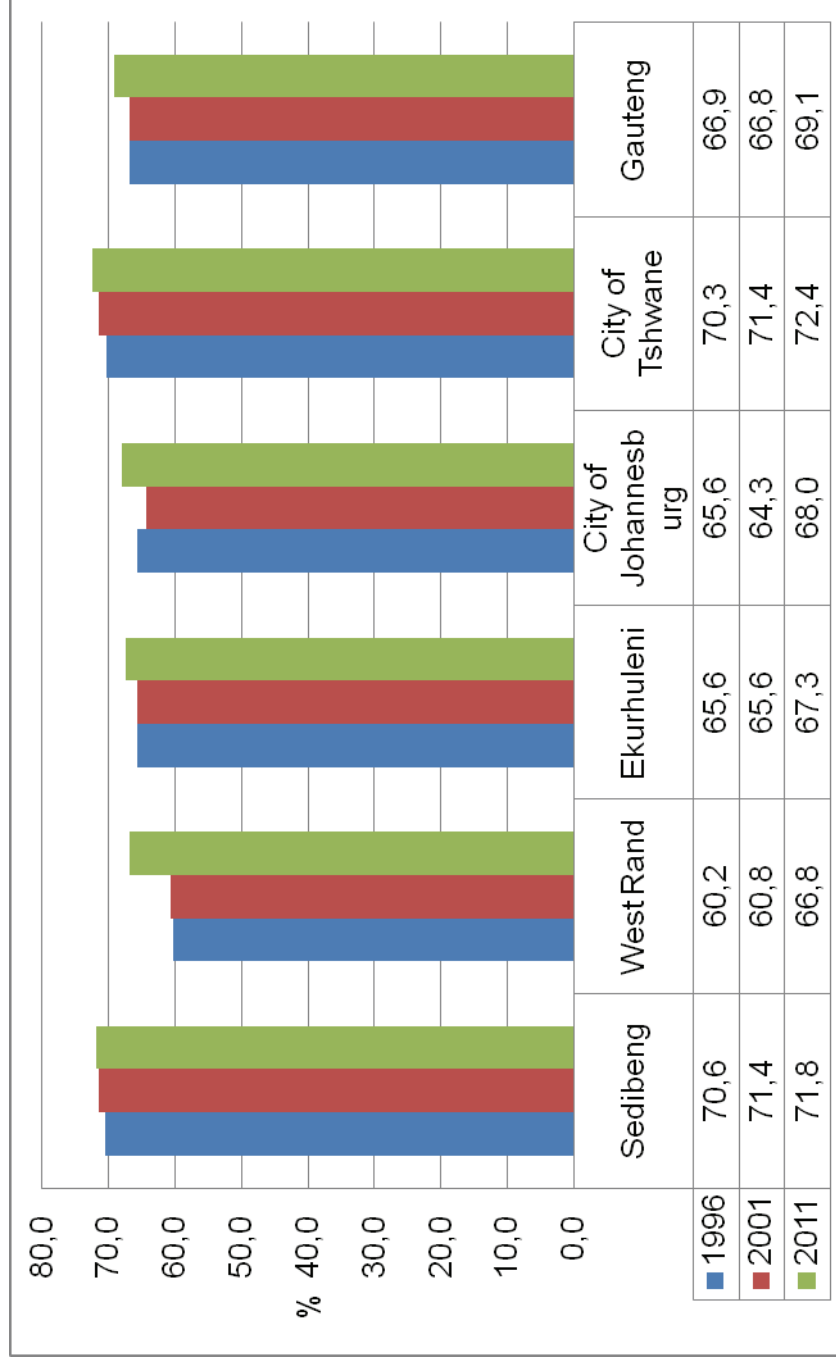
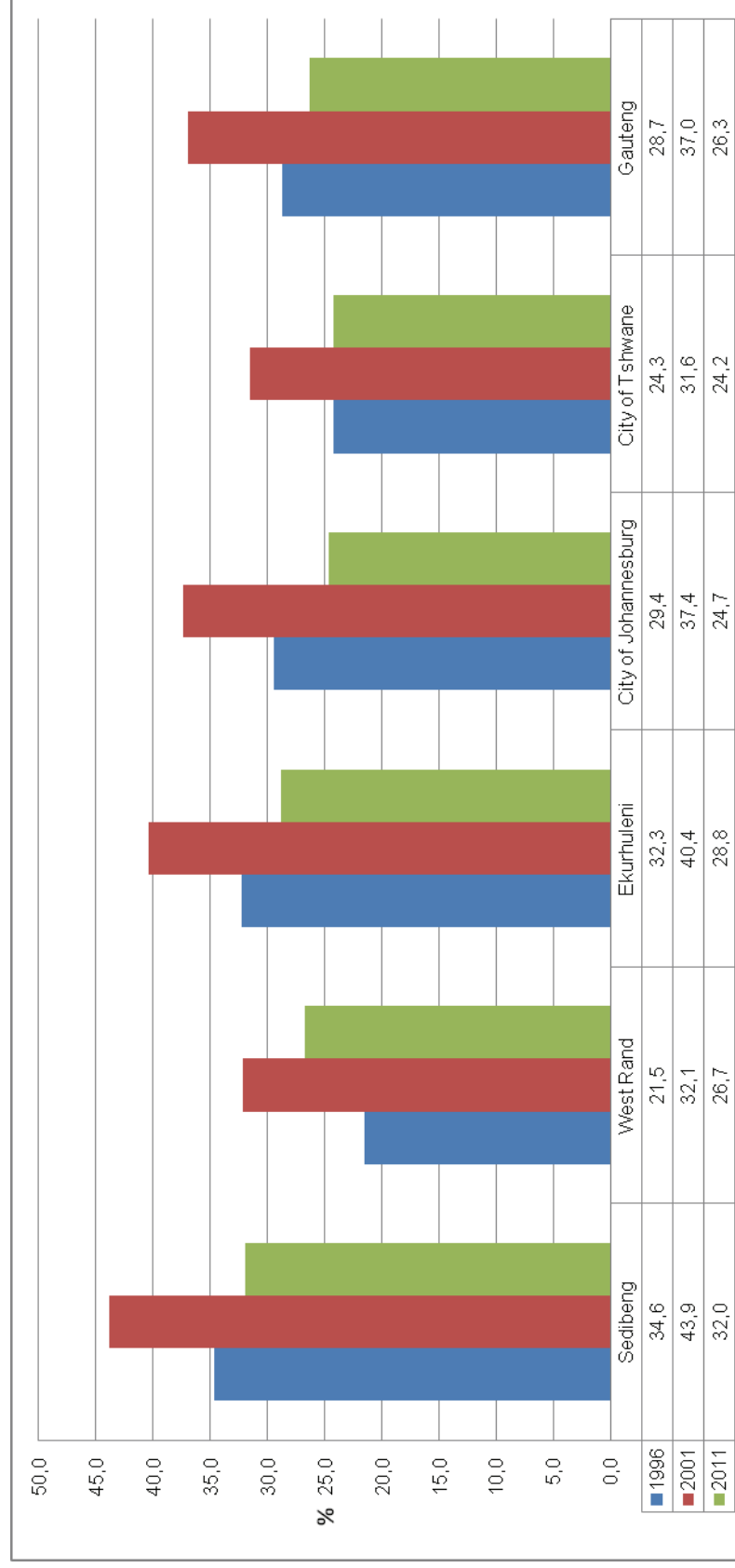


Figure 7.2.2.1 shows a marginal increase in the percentage of those who are attending school across the province.

7.3 Labour market

7.3.1 Unemployment Rate

Figure 7.3.1.1: Unemployment rate (official definition) by district municipality – 1996, 2001 and 2011



Trends in unemployment rate as shown by Figure 7.3.1.1 suggest an increase between 1996 and 2001 and thereafter a decline across districts. **Readers are requested to heed the disclaimer in the introduction to this publication.**

7.4 Housing

7.4.1 Average household size

Figure 7.4.1.1: Average household size by district municipality – 1996, 2001 and 2011

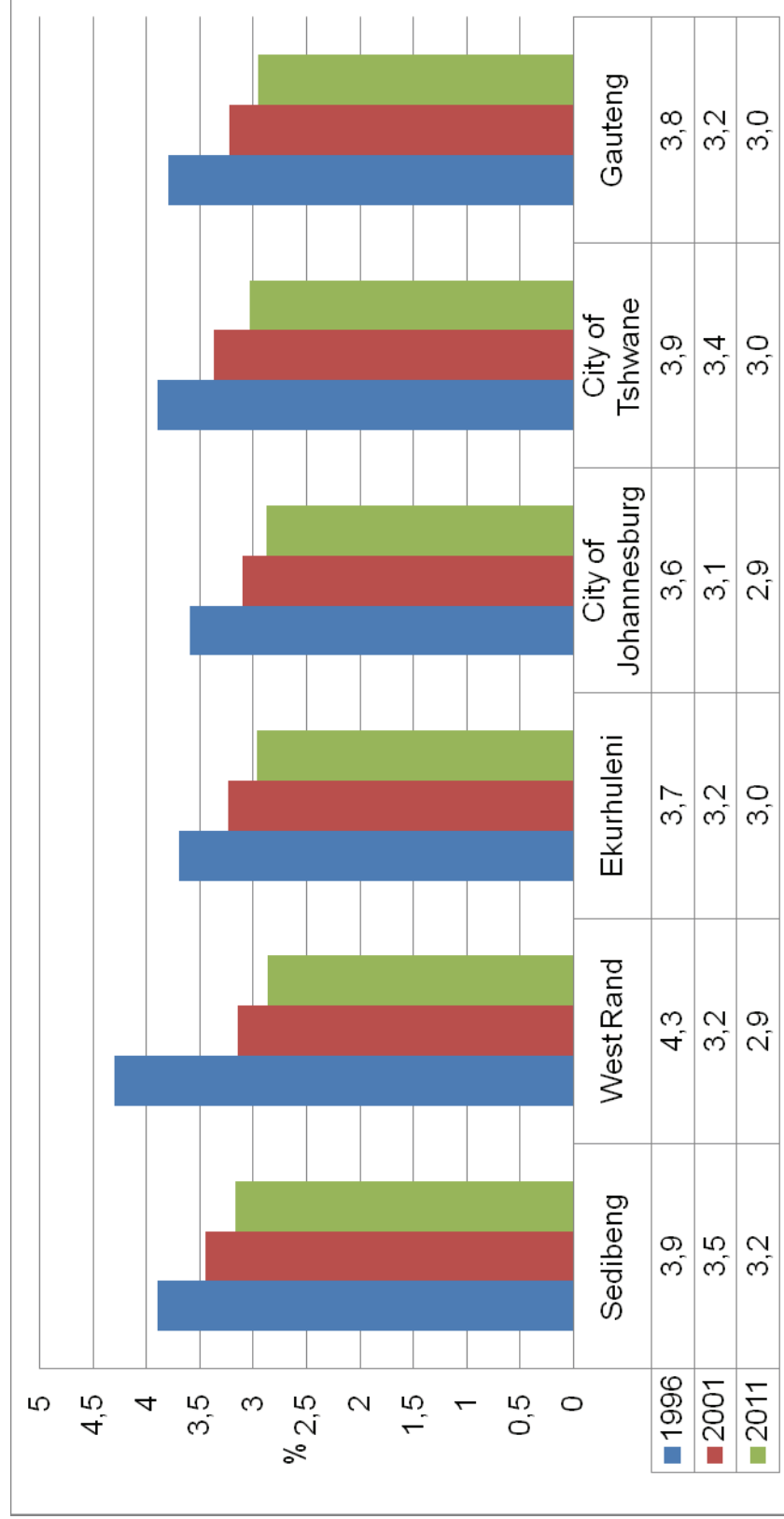


Figure 7.4.1.1 shows a decline in the average household size over time. West Rand district has experienced a significant decline from 4,3% in 1996 to 2,9% in 2011. Sedibeng has recorded consistently higher than average household size relative to the provincial average with the exception of West Rand in 1996.

7.4.2 Type of main dwelling

Figure 7.4.2.1: Percentage distribution of households by type of main dwelling and district municipality – 1996, 2001 and 2011

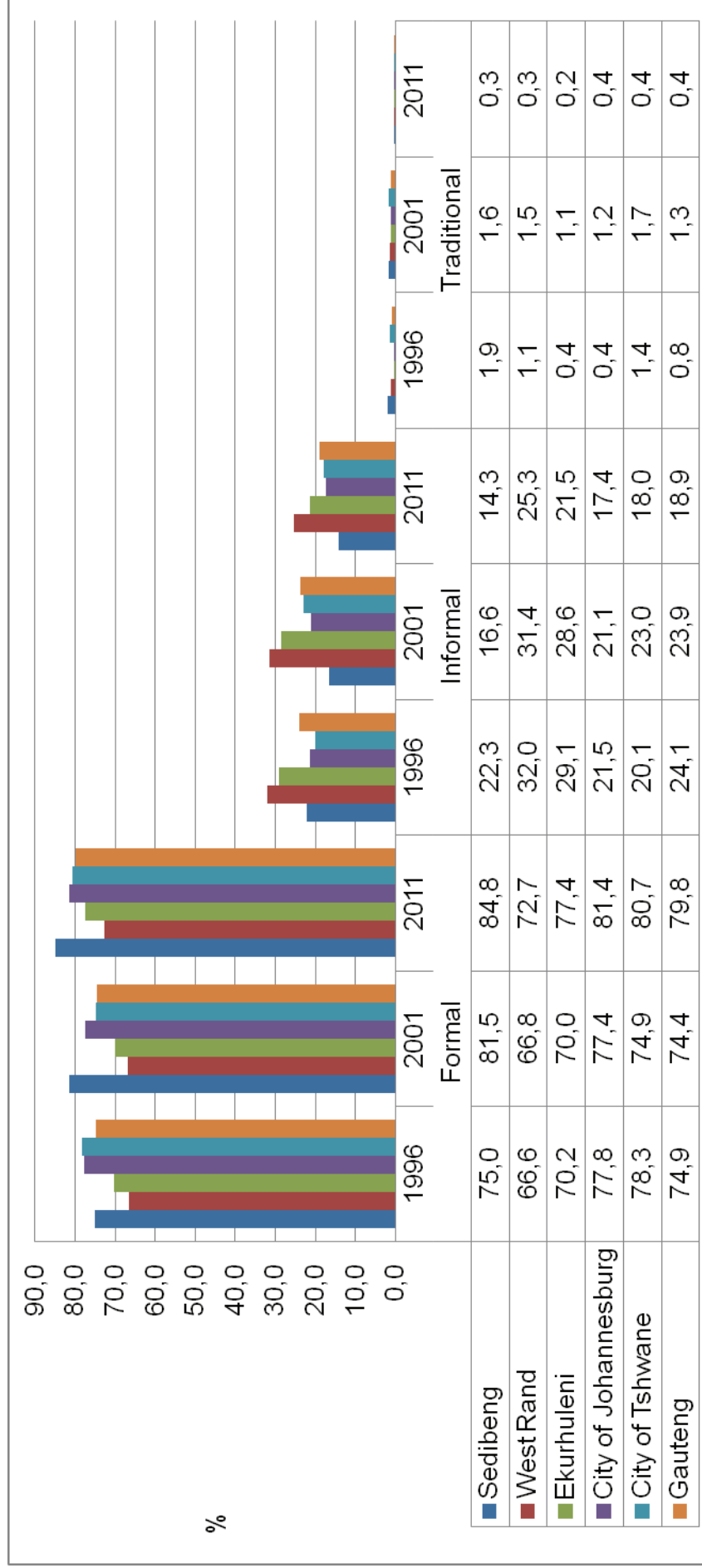
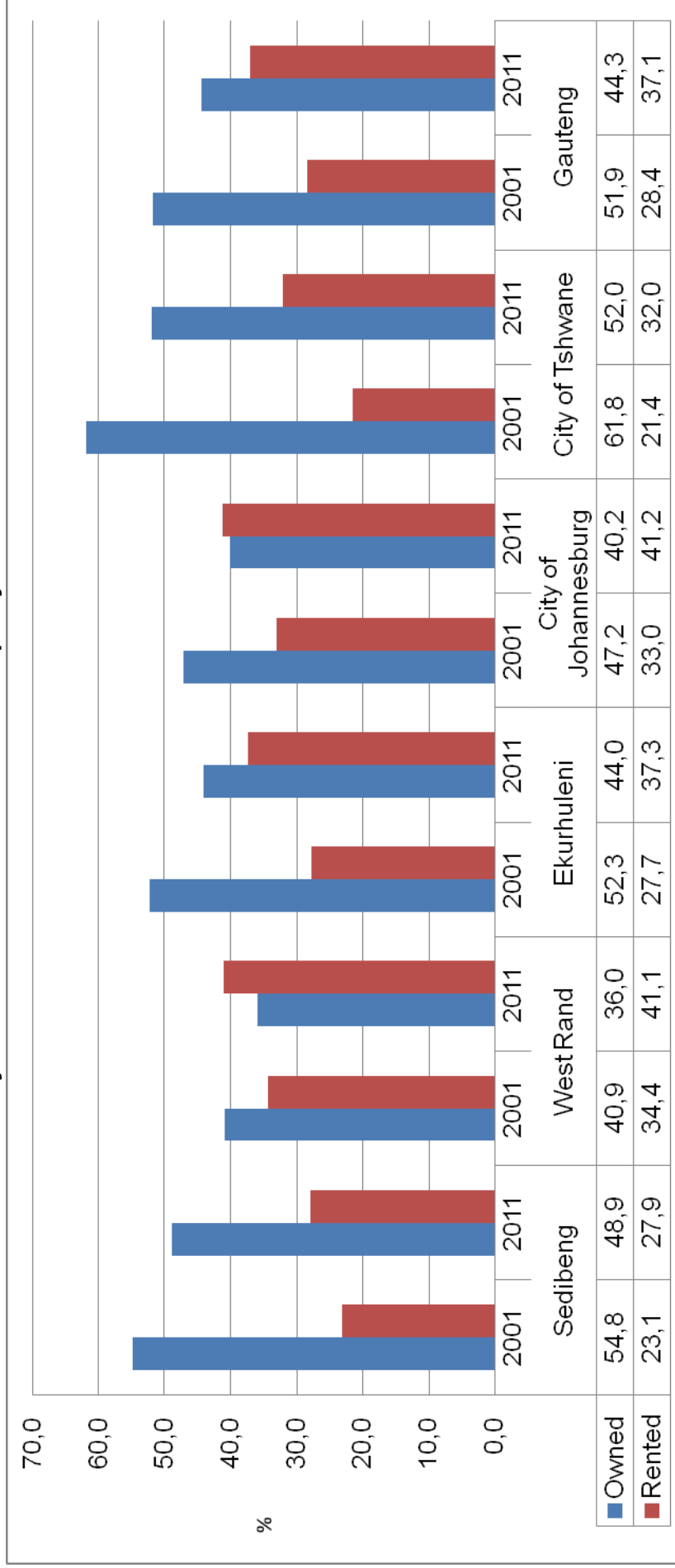


Figure 7.4.2.1 shows an increase in the proportion of households resident in formal dwellings across the province and a decline in informal and traditional dwellings.

7.4.3 Tenure status

Figure 7.4.3.1: Distribution of households by tenure status and district municipality - 2001 and 2011



*owned refers to fully paid off and not yet paid off dwelling units.

Figure 7.4.3.1 shows a decline in the proportion of households that own their dwellings and an increase in the proportion of households whose dwellings are rented.

7.4.4 Household goods

Figure 7.4.4.1: Distribution of households with a radio, television, computer, refrigerator, cellphone, refrigerator, computer, refrigerator, cellphone, landline/ telephone, and access to internet, by district municipality – 1996, 2001 and 2011

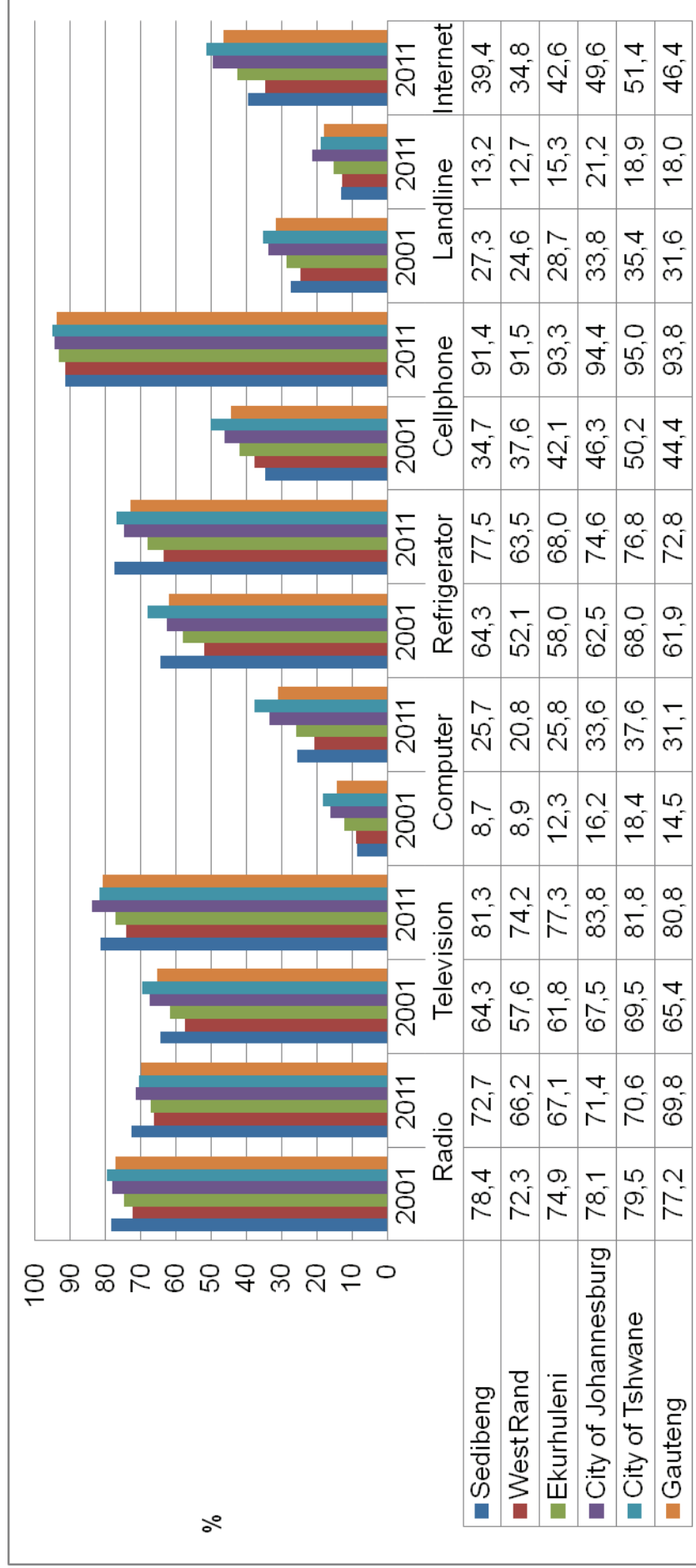


Figure 7.4.4.1 shows a decline in the proportion of households that own radios or landlines/telephone and an increase in households owning televisions, computers, and refrigerators. Of note is the significant increase in the proportion of households that own cellphones. Approximately 50% of the households in the cities of Tshwane and Johannesburg have access to internet.

7.4.5 Electricity for lighting, cooking, heating

Figure 7.4.5.1: Distribution of households using electricity for lighting, cooking and heating by district municipality – 1996, 2001 and 2011

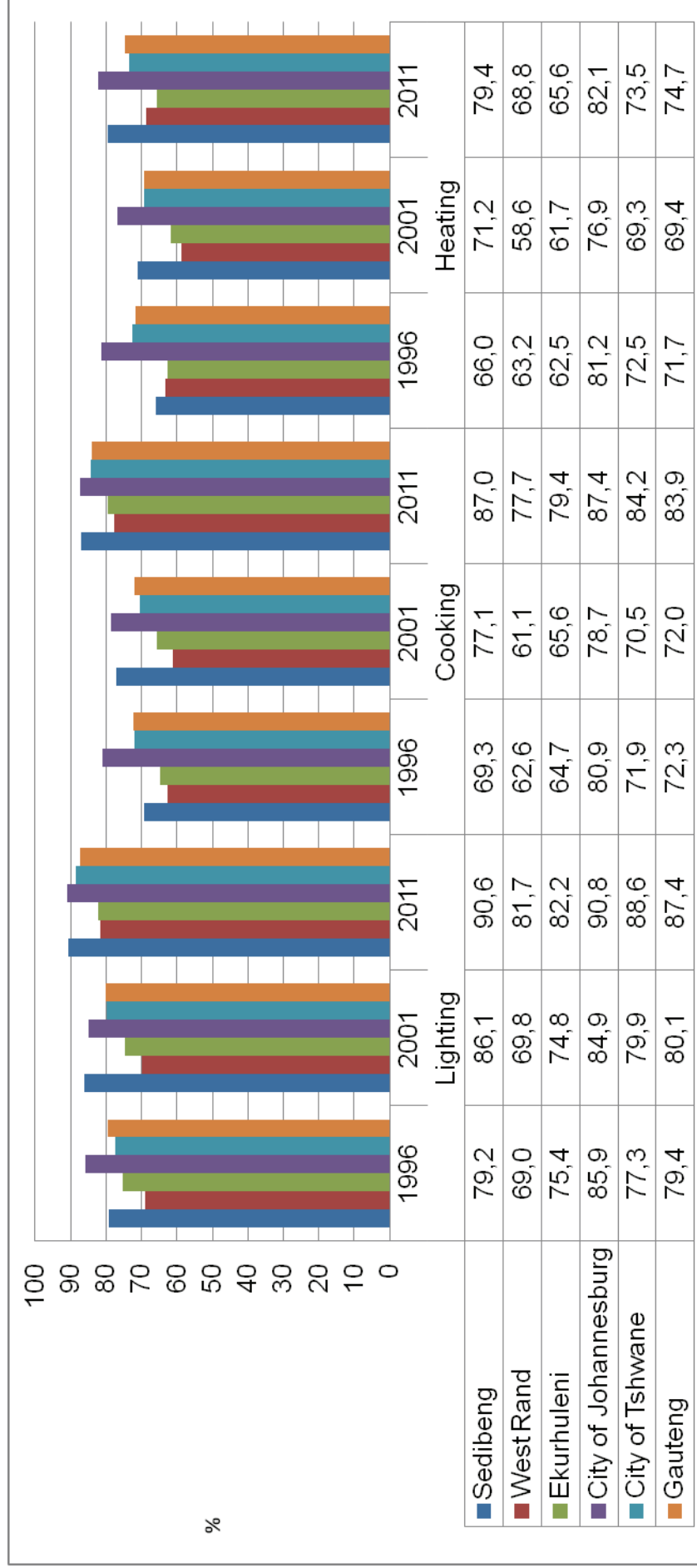


Figure 7.4.5.1 shows that over the period 1996–2011, the proportion of households using electricity as the main source of energy for lighting, heating and cooking increased across the province.

7.4.6 Access to piped water

Figure 7.4.6.1: Distribution of households having access to piped water by district municipality – 1996, 2001 and 2011

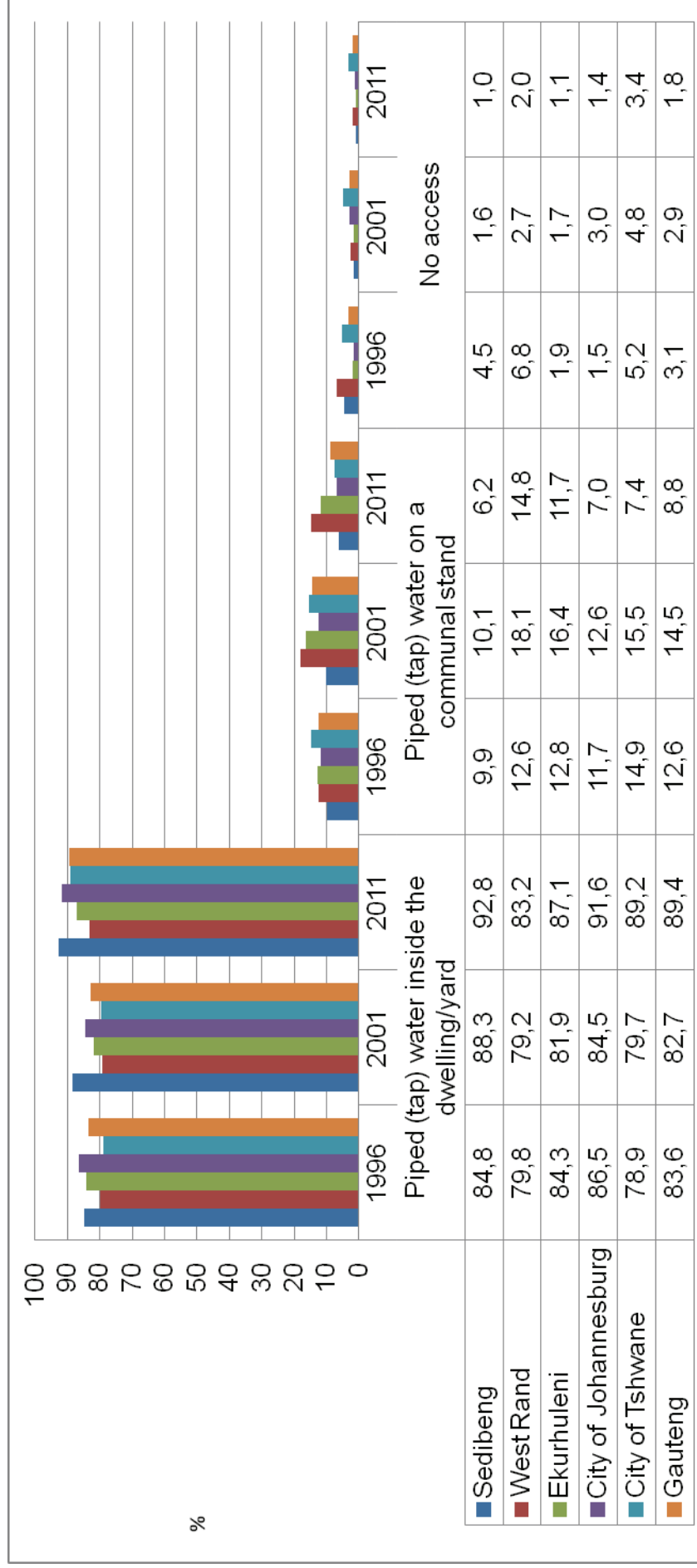


Figure 7.4.6.1 shows that the proportion of households with access to piped water inside the dwelling or yard has increased in all the districts, alongside is the decline in households with no access to piped water.

7.4.7 Refuse disposal

Figure 7.4.7.1: Distribution of households by refuse disposal and district municipality – 1996, 2001 and 2011

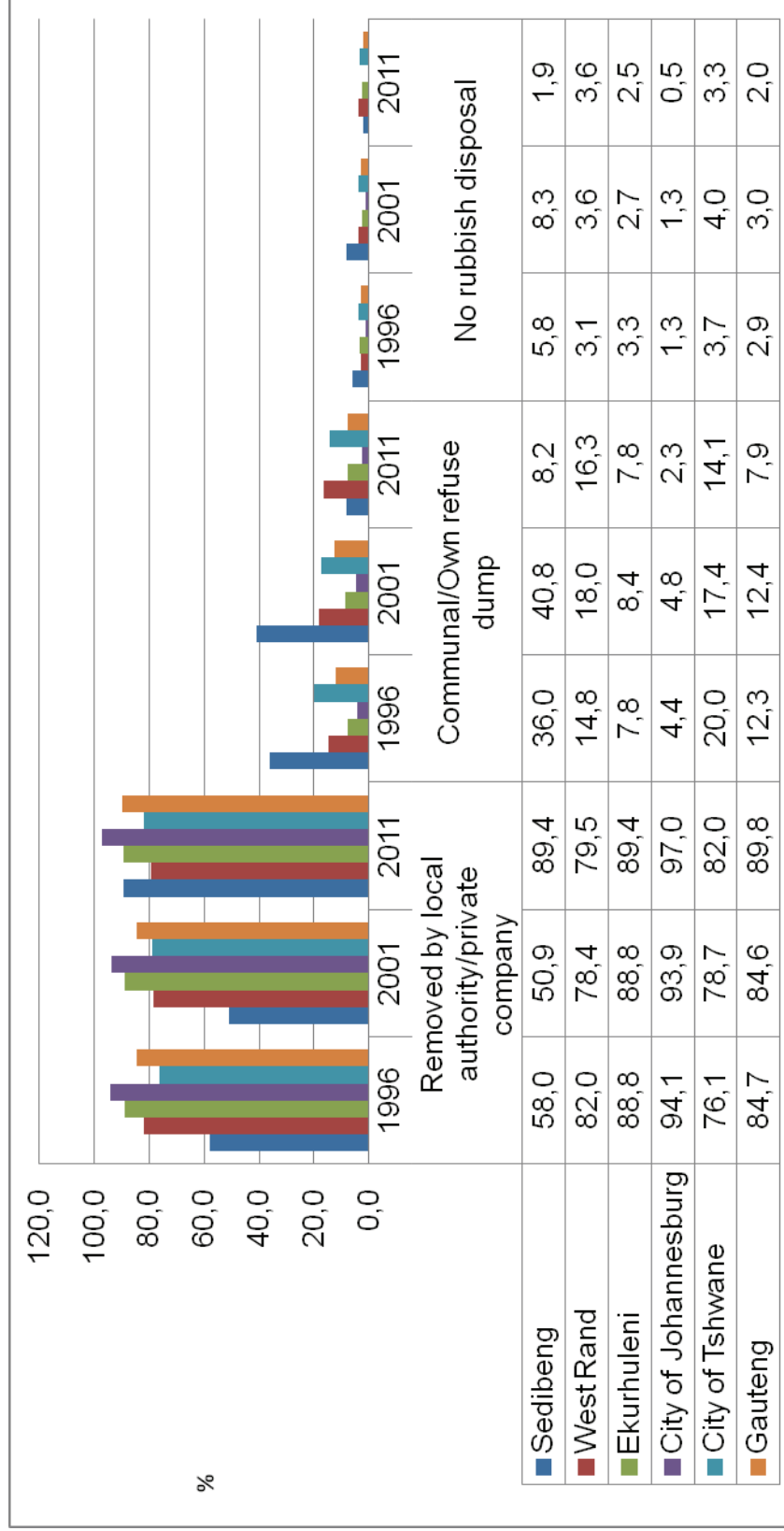


Figure 7.4.7.1 shows that the proportion of household whose refuse is removed by the local authority or private company increased over time in all districts with the exception of West Rand. Alongside is the decline in the proportion of households using a communal or own refuse dump or who have no rubbish disposal. However; the proportion of households using a communal or own refuse dump in Ekurhuleni for 2011 is the same for 1996 while the same is true for households with no access to rubbish disposal in West Rand in 2001 and 2011.

7.4.8 Toilet facilities

Figure 7.4.8.1 Distribution of households by type of toilet facility and district municipality – 1996, 2001 and 2011

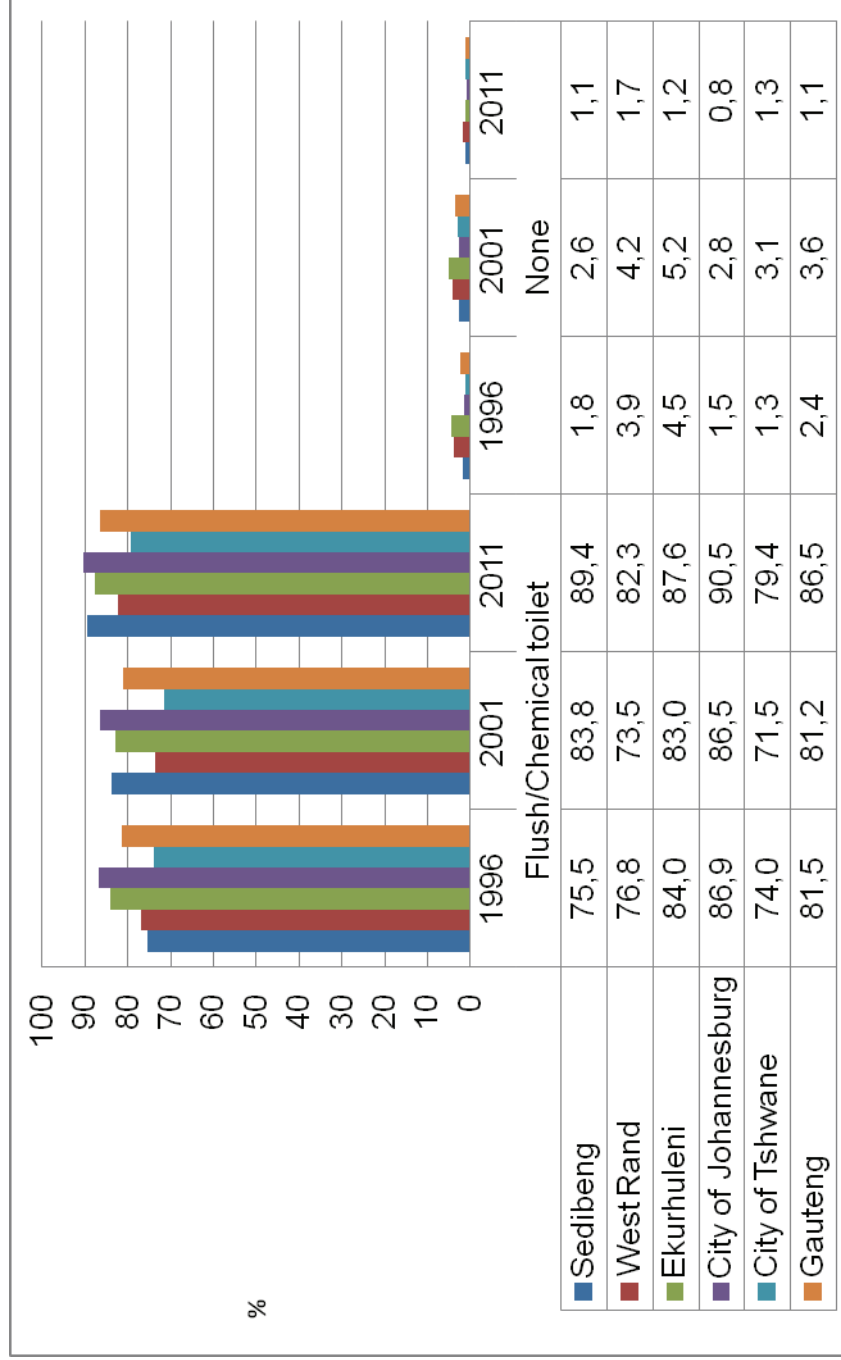


Figure 7.4.8.1 shows that the proportion of households with access to a flush or chemical toilet has increased in all the districts, alongside is the decline in households with no access to a toilet facility.

7.4.9 Average household income

Figure 7.4.9.1: Distribution of average household income by district municipality – 2001 and 2011

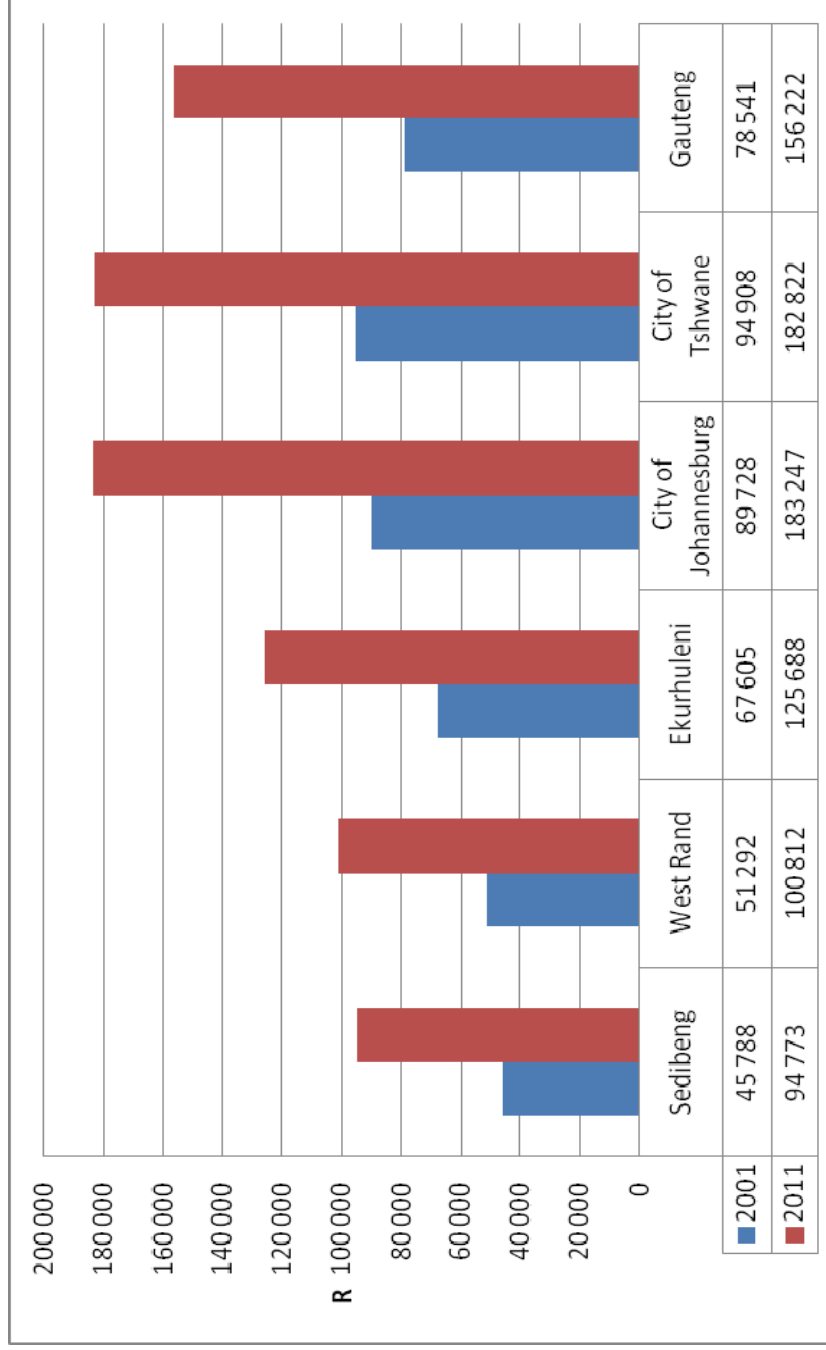


Figure 7.4.9.1 shows an increase of almost 100% in the average household income for all the districts.

7.4.10 Female-headed households

Figure 7.4.10.1: Distribution of female headed households by district municipality – 1996, 2001 and 2011

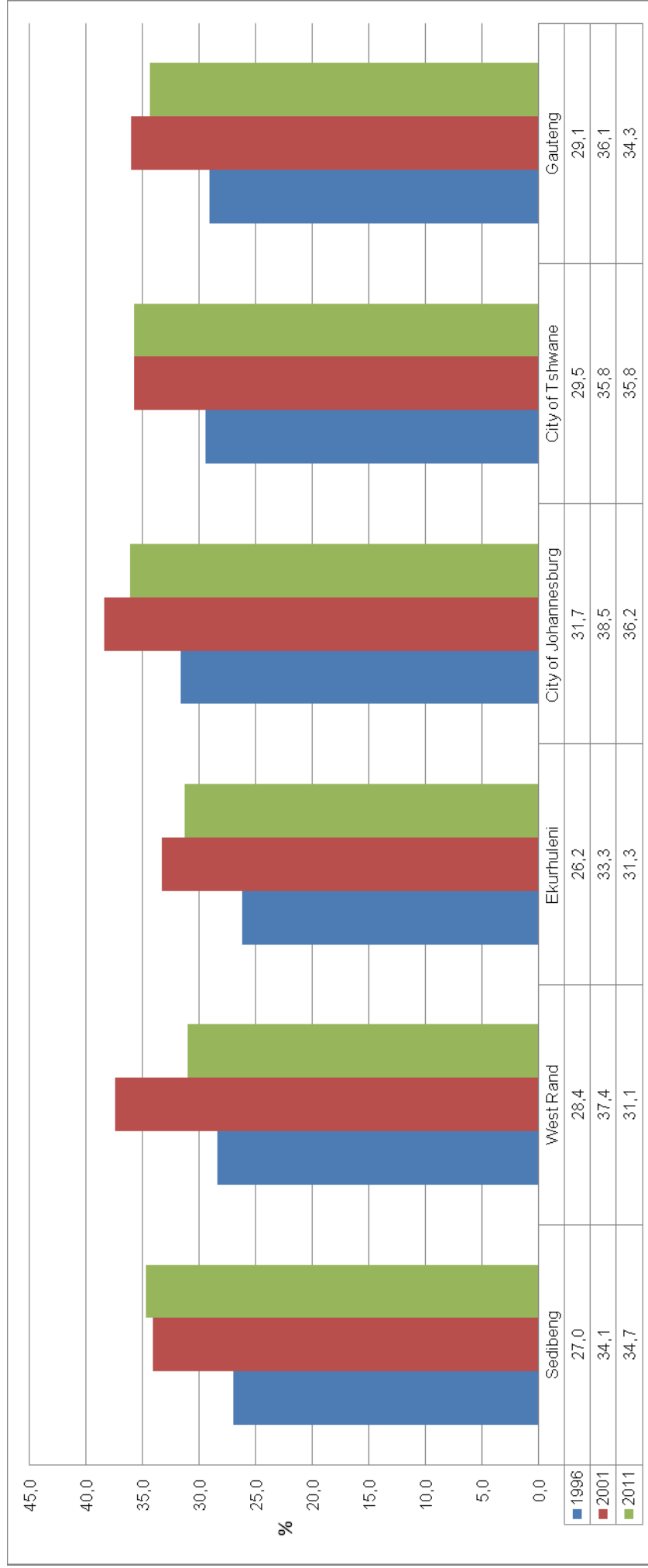


Figure 7.4.10.1 suggests an increase in the proportion of households headed by females for the period 1996–2001, and then a decline during the period 2001–2011, with the exception of the City of Tshwane and Sedibeng which remained largely unchanged in 2001-2011.

7.4.11 Child-headed households

Figure 7.4.11.1: Distribution of child headed households by district municipality – 1996, 2001 and 2011

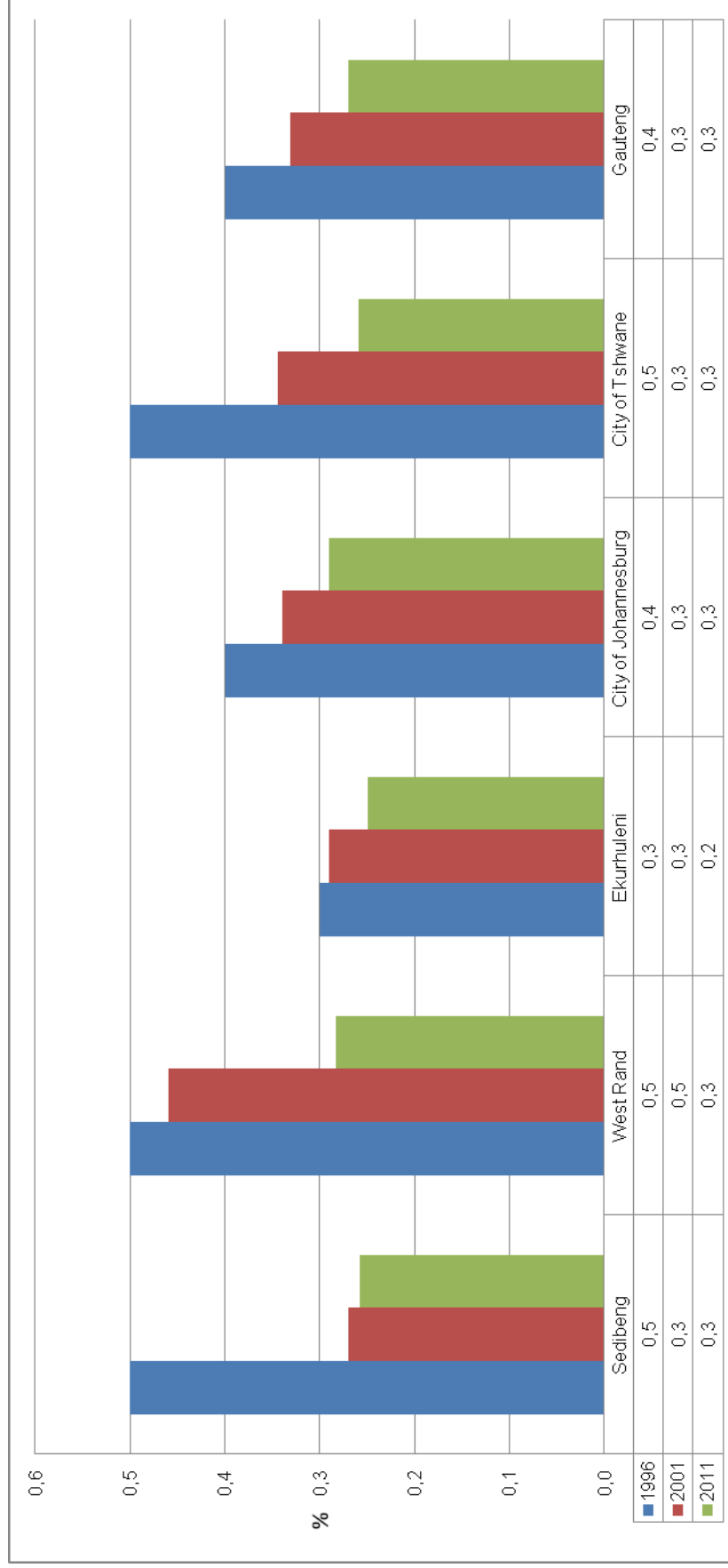


Figure 7.4.11.1 suggests a decrease in the proportion of households headed by children.

Appendix: Gauteng

Age and sex structure, DC42: Sedibeng District

Table 7.1.1.1: Distribution of population by age and sex, Emfuleni municipality – 1996, 2001 and 2011

GT421: Emfuleni	1996			2001			2011		
	Male	Female	Total	Male	Female	Total	Male	Female	Total
	0-4	27681	28041	55722	26639	27057	53696	35524	35700
5-9	28178	28752	56930	27910	28387	56297	29017	29434	58451
10-14	28167	28930	57097	29426	30458	59884	27881	26870	54751
15-19	28872	29523	58394	32027	32963	64989	31327	32556	63883
20-24	32272	32020	64292	36358	35092	71450	40016	39200	79217
25-29	28707	28571	57278	33900	32976	66876	36578	34253	70831
30-34	24956	26554	51510	27867	27918	55785	31135	29446	60580
35-39	22798	23644	46442	25535	27144	52680	26682	25938	52620
40-44	19510	19745	39255	22926	24020	46946	22322	23169	45491
45-49	15600	14761	30361	18321	19706	38027	19091	22167	41258
50-54	11212	10867	22079	14358	14243	28601	17105	19433	36538
55-59	8145	8418	16563	9607	10276	19883	13825	15904	29729
60-64	5684	7211	12894	6973	8576	15550	9935	11703	21638
65-69	4001	5158	9159	4466	6293	10758	6237	7647	13883
70-74	2440	3483	5924	2911	4448	7359	4024	5739	9763
75-79	1821	2793	4614	1660	2683	4342	2241	3755	5997
80-84	692	1413	2105	1075	2004	3079	1099	2165	3264
85+	444	953	1397	495	1253	1748	825	1722	2546
Total	291179	300839	592018	322453	335497	657949	354862	366800	721663

Table 7.1.1.2: Distribution of population by age and sex, Midvaal municipality – 1996, 2001 and 2011

GT422: Midvaal	1996			2001			2011		
	Male	Female	Total	Male	Female	Total	Male	Female	Total
	0-4	1838	1910	3748	2 541	2 361	4 903	4 176	4 203
5-9	2096	2110	4206	2 566	2 384	4 950	3 555	3 466	7 021
10-14	2241	2093	4335	2 640	2 808	5 448	3 454	3 250	6 704
15-19	2055	2022	4078	2 830	2 749	5 579	3 633	3 983	7 616
20-24	2434	2042	4476	3 024	2 880	5 904	4 693	4 198	8 892
25-29	2588	2199	4787	3 365	2 928	6 293	5 235	4 254	9 490
30-34	2562	2267	4829	2 912	2 668	5 579	4 406	3 643	8 048
35-39	2547	2227	4774	2 728	2 762	5 490	4 155	3 549	7 704
40-44	2153	1911	4064	2 517	2 435	4 952	3 529	3 267	6 795
45-49	1931	1456	3387	2 107	2 065	4 172	2 960	2 953	5 913
50-54	1534	1277	2811	1 717	1 550	3 267	2 676	2 418	5 094
55-59	1180	988	2168	1 410	1 263	2 674	2 176	2 067	4 243
60-64	873	743	1616	1 016	917	1 933	1 744	1 643	3 387
65-69	568	517	1085	659	591	1 251	1 219	1 277	2 496
70-74	345	374	719	411	426	837	794	871	1 666
75-79	204	247	451	214	281	494	441	510	950
80-84	99	141	240	148	223	371	208	288	495
85+	61	96	157	67	109	176	124	283	407
Total	27310	24620	51930	32 871	31 400	64 271	49 178	46 123	95 301

Table 7.1.1.3: Distribution of population by age and sex, Lesedi municipality – 1996, 2001 and 2011

GT423:Lesedi	1996			2001			2011		
	Male	Female	Total	Male	Female	Total	Male	Female	Total
	0-4	2979	3053	6032	2 985	3 007	5 991	5 019	4 943
5-9	3171	3319	6490	3 295	3 261	6 556	4 245	4 048	8 293
10-14	3388	3335	6723	3 307	3 527	6 834	3 904	3 723	7 626
15-19	3346	3259	6605	3 589	3 627	7 216	4 173	4 105	8 278
20-24	3440	3104	6544	3 754	3 379	7 133	5 247	4 601	9 848
25-29	3186	2830	6016	3 827	3 352	7 179	5 817	4 617	10 434
30-34	2912	2653	5565	3 050	2 977	6 027	4 740	3 824	8 563
35-39	2497	2469	4966	2 822	2 734	5 556	4 010	3 447	7 457
40-44	2161	2009	4170	2 456	2 460	4 917	3 325	3 142	6 467
45-49	1738	1560	3298	1 919	1 927	3 846	2 854	2 775	5 628
50-54	1383	1302	2685	1 563	1 511	3 074	2 278	2 433	4 711
55-59	1009	990	1999	1 157	1 124	2 281	1 929	1 990	3 919
60-64	721	819	1540	841	982	1 823	1 449	1 501	2 949
65-69	526	633	1159	577	739	1 317	951	1 101	2 052
70-74	360	406	766	413	507	920	688	864	1 552
75-79	268	350	618	238	290	528	348	566	914
80-84	129	187	316	149	276	425	200	304	504
85+	72	114	186	100	144	244	142	221	363
Total	33285	32392	65678	36 041	35 827	71 868	51 317	48 203	99 520

Age and sex structure, DC48: West Rand District

Table 7.1.1.4: Distribution of population by age and sex, Mogale City municipality – 1996, 2001 and 2011

GT481: Mogale City	1996			2001			2011		
	Male	Female	Total	Male	Female	Total	Male	Female	Total
	0-4	9894	10221	20115	12 035	12 351	24 386	17 052	16 858
5-9	9480	9358	18838	11 444	11 405	22 850	13 539	13 656	27 195
10-14	9299	9411	18710	11 777	11 489	23 266	12 626	12 282	24 908
15-19	9201	9113	18314	13 095	12 468	25 563	13 682	13 787	27 469
20-24	11965	10669	22634	16 932	14 635	31 567	21 915	17 702	39 617
25-29	13051	11406	24457	18 328	14 970	33 298	21 665	19 109	40 774
30-34	12020	11040	23060	14 766	13 590	28 356	18 374	15 931	34 305
35-39	10686	9778	20464	13 835	12 857	26 692	15 574	13 778	29 352
40-44	8410	7527	15937	11 466	10 986	22 452	12 437	12 334	24 771
45-49	6465	5602	12067	8 716	8 492	17 208	10 491	11 121	21 612
50-54	4744	4091	8834	6 597	5 981	12 578	8 777	9 262	18 038
55-59	3523	3254	6776	4 583	4 124	8 706	6 878	7 271	14 150
60-64	2259	2309	4568	3 316	3 430	6 746	4 830	5 000	9 830
65-69	1740	1796	3536	2 050	2 297	4 347	2 961	3 339	6 300
70-74	1104	1316	2420	1 390	1 788	3 178	1 995	2 511	4 507
75-79	650	1046	1697	957	1 188	2 145	1 111	1 574	2 685
80-84	333	688	1022	553	843	1 396	648	1 086	1 734
85+	223	469	692	243	528	771	425	841	1 266
Total	115048	109093	224141	152 084	143 421	295 505	184 981	177 441	362 422

Table 7.1.1.5: Distribution of population by age and sex, Randfontein municipality – 1996, 2001 and 2011

GT482:Randfontein	1996			2001			2011		
	Male	Female	Total	Male	Female	Total	Male	Female	Total
	0-4	4637	4671	9308	5 595	5 640	11 235	7 010	6 961
5-9	4374	4473	8847	5 225	5 236	10 461	5 877	5 914	11 791
10-14	4394	4445	8839	5 290	5 223	10 514	5 662	5 680	11 342
15-19	4371	4314	8685	5 363	5 581	10 944	5 778	5 823	11 600
20-24	5189	4959	10148	6 561	6 176	12 737	7 591	7 179	14 770
25-29	5572	5388	10960	6 925	6 472	13 397	7 838	7 121	14 959
30-34	5524	5168	10692	6 061	6 074	12 135	6 946	6 013	12 959
35-39	5351	4667	10018	5 935	5 697	11 632	5 854	5 612	11 466
40-44	4385	3631	8016	5 354	4 930	10 283	5 006	5 322	10 328
45-49	3345	2666	6012	4 110	3 794	7 904	4 708	4 881	9 589
50-54	2367	1976	4343	2 951	2 661	5 612	4 238	4 260	8 498
55-59	1826	1603	3429	1 981	1 968	3 949	3 218	3 189	6 408
60-64	1196	1242	2438	1 392	1 561	2 954	2 131	2 140	4 271
65-69	895	955	1850	912	1 092	2 004	1 303	1 593	2 896
70-74	523	719	1242	629	768	1 396	840	1 122	1 962
75-79	376	503	880	316	544	860	481	780	1 261
80-84	189	328	517	175	316	491	247	468	715
85+	149	211	360	120	214	334	158	342	499
Total	54663	51920	106583	64 896	63 946	128 842	74 835	74 400	149 286

Table 7.1.1.6: Distribution of population by age and sex, Westonaria municipality – 1996, 2001 and 2011

GT483: Westonaria	1996			2001			2011		
	Male	Female	Total	Male	Female	Total	Male	Female	Total
	0-4	4291	4427	8718	5 006	5 069	10 075	5 619	5 669
5-9	3309	3280	6588	3 821	3 982	7 802	4 125	4 215	8 339
10-14	2591	2558	5148	3 477	3 615	7 092	3 840	3 933	7 773
15-19	2507	2733	5240	3 463	3 829	7 292	4 122	4 232	8 354
20-24	5482	4349	9831	5 027	5 051	10 078	6 569	5 768	12 337
25-29	10464	5381	15844	6 854	6 018	12 873	7 778	6 123	13 901
30-34	13253	4968	18221	7 288	5 319	12 607	6 365	4 856	11 220
35-39	13654	3561	17215	8 495	4 823	13 318	5 270	4 007	9 276
40-44	9523	2247	11769	7 922	3 418	11 340	4 752	3 341	8 093
45-49	5779	1441	7220	5 142	2 158	7 300	4 906	2 826	7 732
50-54	2886	894	3779	2 975	1 407	4 381	3 838	2 090	5 927
55-59	1749	649	2398	1 321	929	2 250	2 080	1 290	3 370
60-64	653	412	1065	820	654	1 475	843	873	1 716
65-69	329	309	638	368	382	750	473	550	1 022
70-74	194	206	400	249	294	543	296	369	665
75-79	118	149	267	128	198	326	155	227	382
80-84	54	66	121	68	117	185	63	145	208
85+	51	49	101	29	82	111	58	103	161
Total	76886	37678	114564	62 455	47 344	109 799	61 152	50 615	111 767

Table 7.1.1.7: Distribution of population by age and sex, Merafong City municipality – 1996, 2001 and 2011

GT484: Merafong City	1996			2001			2011		
	Male	Female	Total	Male	Female	Total	Male	Female	Total
	0-4	7714	7804	15519	8645	8769	17414	9613	9507
5-9	6824	6870	13694	7471	7426	14897	7448	7303	14751
10-14	6056	6321	12377	7467	7459	14926	6999	6749	13748
15-19	6055	5994	12048	7247	7727	14974	7254	7737	14991
20-24	11489	7541	19030	9283	9245	18527	10328	9632	19960
25-29	18063	8789	26852	12971	10107	23078	11872	9920	21792
30-34	20255	8456	28711	15133	9412	24546	10350	8111	18461
35-39	20011	6435	26445	16073	8755	24828	9323	6867	16190
40-44	14740	4517	19258	14740	6616	21356	9088	6017	15086
45-49	9427	3039	12466	9596	4499	14095	8845	5606	14451
50-54	5792	2227	8019	5654	2958	8612	7220	4130	11349
55-59	3862	1592	5455	2850	2082	4932	4053	2947	6999
60-64	1582	1163	2745	1694	1610	3304	1950	2048	3999
65-69	837	923	1759	869	1098	1967	1156	1336	2491
70-74	471	537	1008	648	773	1421	827	1061	1888
75-79	256	378	634	352	495	847	414	672	1087
80-84	124	205	329	187	304	491	269	419	688
85+	112	143	255	78	188	266	168	301	469
Total	133669	72933	206602	120957	89524	210481	107157	90363	197520

Table 7.1.1.8: Distribution of population by age and sex, Ekurhuleni metropolitan municipality – 1996, 2001 and 2011

EKU: Ekurhuleni	1996			2001			2011		
	Male	Female	Total	Male	Female	Total	Male	Female	Total
	0-4	95053	97193	192246	106673	106987	213660	159 573	157 404
5-9	85831	87829	173660	98450	100716	199166	120 401	118 902	239 303
10-14	80148	83124	163272	97264	99703	196967	109 665	106 519	216 183
15-19	78608	80536	159144	103169	106481	209650	117 978	120 727	238 705
20-24	112657	104175	216832	140017	127813	267830	178 087	168 641	346 727
25-29	121761	106981	228743	158290	138670	296960	206 472	180 575	387 047
30-34	107239	97010	204249	131322	115997	247319	177 151	144 082	321 232
35-39	91327	82462	173790	113225	105543	218768	143 250	121 052	264 302
40-44	73060	64996	138055	93188	87885	181073	111 303	100 649	211 951
45-49	56449	47781	104230	69901	67782	137683	88 126	88 112	176 239
50-54	39854	36190	76044	52802	49320	102122	70 704	72 718	143 422
55-59	28628	27234	55862	35358	35399	70757	54 877	56 938	111 814
60-64	18484	22050	40534	24573	27697	52270	37 476	40 537	78 014
65-69	13438	16770	30208	14429	19382	33811	22 858	27 222	50 080
70-74	8346	11180	19526	9679	14384	24063	14 721	19 702	34 423
75-79	5448	8102	13550	5706	8854	14560	7 912	12 802	20 715
80-84	2395	4513	6908	3618	6083	9701	4 236	8 115	12 352
85+	1324	2980	4304	1661	3740	5401	2 933	6 052	8 985
Total	1020051	981106	2001157	1259324	1222438	2481762	1 627 724	1 550 747	3 178 470

Table 7.1.1.9: Distribution of population by age and sex, City of Johannesburg metropolitan municipality – 1996, 2001 and 2011

JHB: City of Johannesburg	1996			2001			2011		
	Male	Female	Total	Male	Female	Total	Male	Female	Total
	0-4	115488	116541	232029	132184	133451	265635	218 590	214 133
5-9	104775	105368	210143	117127	117885	235012	160 226	158 239	318 465
10-14	97858	100698	198555	115336	117610	232946	139 589	138 035	277 624
15-19	100403	101837	202240	128052	135125	263177	154 707	160 409	315 116
20-24	150919	140977	291896	192268	178337	370605	252 752	249 660	502 412
25-29	164599	147932	312531	215782	191346	407128	296 584	276 223	572 807
30-34	137202	128416	265618	173047	156478	329524	251 469	220 565	472 034
35-39	113991	109762	223753	141744	137794	279538	200 038	177 828	377 866
40-44	87950	88596	176547	113985	117330	231315	150 576	143 170	293 746
45-49	68078	66639	134717	84093	94141	178234	114 646	121 831	236 477
50-54	48592	50344	98936	66097	69788	135885	91 062	101 871	192 933
55-59	36396	40206	76603	44626	49845	94471	70 634	80 898	151 531
60-64	24956	32360	57316	31538	39656	71194	49 644	58 040	107 684
65-69	19177	24894	44071	19758	28356	48114	30 348	37 559	67 906
70-74	12713	17725	30438	14112	21198	35309	20 271	28 527	48 797
75-79	8708	13007	21716	8954	14332	23286	11 638	19 411	31 049
80-84	4177	7644	11821	5597	9718	15315	6 959	12 630	19 589
85+	2892	5461	8353	2902	6464	9366	5 405	10 662	16 068
Total	1298873	1298409	2597282	1607200	1618855	3226055	2 225 137	2 209 690	4 434 827

Table 7.1.1.10: Distribution of population by age and sex, City of Tshwane metropolitan municipality – 1996, 2001 and 2011

TSH: City of Tshwane	1996			2001			2011		
	Male	Female	Total	Male	Female	Total	Male	Female	Total
	0-4	81566	82762	164328	84784	85233	170017	137 848	136 018
5-9	79602	80481	160083	87768	88158	175926	106 232	105 659	211 891
10-14	77710	79864	157575	90174	91623	181797	97 308	94 045	191 352
15-19	76330	76776	153106	97212	101420	198632	112 418	116 160	228 577
20-24	100080	96034	196114	120284	113978	234263	170 994	169 851	340 844
25-29	97757	92193	189950	119732	113321	233053	174 314	164 499	338 813
30-34	82772	81348	164120	103360	99713	203073	145 298	132 071	277 369
35-39	72833	70343	143175	89459	89285	178743	121 415	114 373	235 789
40-44	58353	56911	115264	76001	76419	152420	98 807	98 319	197 126
45-49	44893	43567	88460	57579	59488	117068	78 813	85 378	164 191
50-54	33957	34626	68583	43250	44874	88124	65 524	70 816	136 340
55-59	25232	26081	51313	31488	34068	65556	51 149	55 090	106 239
60-64	17106	20374	37480	22587	26567	49154	35 611	40 576	76 187
65-69	13036	16885	29920	14295	19014	33309	23 244	29 258	52 501
70-74	8709	12170	20879	10533	15415	25948	15 799	21 887	37 686
75-79	6203	9490	15693	6330	10269	16600	9 331	14 984	24 315
80-84	2799	5350	8149	4251	7415	11666	5 513	10 398	15 912
85+	1819	4319	6138	2094	4881	6974	3 866	8 624	12 490
Total	880756	889575	1770330	1061181	1081141	2142322	1 453 483	1 468 005	2 921 488

Table 7.1.2.1: Population growth rates by municipality – 1996, 2001 and 2011

Municipality	Total population			Growth rate (1996–2001)	Total population		Growth rate (2001–2011)
	1996	2001	2011				
DC42: Sedibeng	716 844	794 088	916 484	2,0		1,4	
GT421: Emfuleni	597 285	657 949	721 663	1,9		0,9	
GT422: Midvaal	53 353	64 271	95 301	3,7		3,9	
GT423: Lesedi	66 206	71 868	99 520	1,6		3,3	
DC48: West Rand	659 475	744 627	820 995	2,4		1,0	
GT481: Mogale City	226 446	295 505	362 422	5,3		2,0	
GT482: Randfontein	107 711	128 842	149 286	3,6		1,5	
GT483: Westonaria	115 592	109 799	111 767	-1,0		0,2	
GT484: Merafong City	209 727	210 481	197 520	0,1		-0,6	
EKU: Ekurhuleni	2 026 978	2 481 762	3 178 470	4,0		2,5	
JHB: City of Johannesburg	2 638 471	3 226 055	4 434 827	4,0		3,2	
TSH: City of Tshwane	1 792 357	2 142 322	2 921 488	3,6		3,1	
Gauteng	7 834 125	9 388 854	12 272 263	3,6		2,7	

Table 7.1.3.1: Sex ratios by municipality – 1996, 2001 and 2011

Municipality	Total male			Total female			Sex ratio		
	1996	2001	2011	1996	2001	2011	1996	2001	2011
	DC42: Sedibeng	355 527	391 365	455 358	361 317	402 723	461 126	98	97
GT421: Emfuleni	293 926	322 453	354 862	303 359	335 497	366 800	97	96	97
GT422: Midvaal	28 034	32 871	49 178	25 319	31 400	46 123	111	105	107
GT423: Lesedi	33 567	36 041	51 317	32 639	35 827	48 203	103	101	106
DC48: West Rand	385 064	400 391	428 175	274 411	344 236	392 820	140	116	109
GT481: Mogale City	116 275	152 084	184 981	110 171	143 421	177 441	106	106	104
GT482: Randfontein	55 243	64 896	74 885	52 468	63 946	74 400	105	101	101
GT483: Westonaria	77 504	62 455	61 152	38 088	47 344	50 615	203	132	121
GT484: Merafong City	136 043	120 957	107 157	73 683	89 524	90 363	185	135	119
EKU: Ekurhuleni	1 033 851	1 259 324	1 627 724	993 127	1 222 438	1 550 747	104	103	105
JHB: City of Johannesburg	1 321 316	1 607 200	2 225 137	1 317 155	1 618 855	2 209 690	100	99	101
TSH: City of Tshwane	892 327	1 061 181	1 453 483	900 030	1 081 141	1 468 005	99	98	99
Gauteng	3 988 085	4 719 462	6 189 875	3 846 040	4 669 393	6 082 388	104	101	102

Table 7.1.4.1: Distribution of population by population group (Black African), sex and municipality – 1996, 2001 and 2011

Municipality	1996			2001			2011		
	Male	Female	Total	Male	Female	Total	Male	Female	Total
	DC42: Sedibeng	275 005	280 508	555 513	319384	329146	648530	371 160	377 497
GT421: Emtuleni	237389	246073	483462	270826	282129	552955	302263	313832	616095
GT422: Midvaal	13155	10574	23729	19545	18262	37807	29277	26366	55643
GT423: Lesedi	24461	23860	48321	29014	28755	57768	39621	37298	76919
DC48: West Rand	307 051	196 410	503 461	322642	264376	587018	343 537	306 595	650 132
GT481: Mogale City	82356	75645	158001	116887	107732	224620	141178	132640	273817
GT482: Randfontein	36580	32882	69462	45438	43403	88841	52329	50943	103272
GT483: Westonaria	70378	31619	101996	56499	41391	97890	56163	45983	102147
GT484: Merafong City	117738	56263	174001	103817	71850	175667	93867	77030	170897
EKU: Ekurhuleni	765 041	713 233	1 478 274	971979	920351	1892331	1 293 462	1 209 308	2 502 769
JHB: City of Johannesburg	940 494	912 717	1 853 211	1193916	1177123	2371038	1 713 385	1 675 893	3 389 278
TSH: City of Tshwane	619 235	610 587	1 229 822	780847	782992	1563840	1 102 422	1 100 425	2 202 847
Gauteng	2 906 827	2 713 454	5 620 280	3588769	3473988	7062757	4 823 966	4 669 718	9 493 684

Table 7.1.4.1: Distribution of population by population group (Coloured), sex and municipality – 1996, 2001 and 2011

Municipality	1996			2001			2011		
	Male	Female	Total	Male	Female	Total	Male	Female	Total
	DC42: Sedibeng	3 348	3 507	6 855	4174	4286	8459	5 515	5 555
GT421: Emfuleni	2856	3046	5901	3411	3585	6996	4056	4300	8356
GT422: Midvaal	227	235	462	434	450	884	778	780	1558
GT423: Lesedi	265	226	492	329	250	579	682	474	1156
DC48: West Rand	7 645	7 917	15 561	8576	8962	17537	9 972	10 578	20 550
GT481: Mogale City	934	733	1666	1221	1022	2243	1492	1560	3052
GT482: Randfontein	5792	6294	12086	6335	6865	13200	7047	7571	14618
GT483: Westonaria	249	161	410	242	257	500	357	393	750
GT484: Merafong City	670	730	1399	777	817	1595	1076	1054	2130
EKU: Ekurhuleni	27 236	28 783	56 019	32287	34822	67109	41 444	44 466	85 910
JHB: City of Johannesburg	81 698	89 428	171 126	99055	107182	206237	118 706	128 570	247 276
TSH: City of Tshwane	14 654	16 019	30 673	19467	21163	40629	28 183	30 605	58 788
Gauteng	134 581	145 653	280 235	163558	176415	339973	203 820	219 774	423 594

Table 7.1.4.1: Distribution of population by population group (Indian/Asian), sex and municipality – 1996, 2001 and 2011

Municipality	1996			2001			2011		
	Male	Female	Total	Male	Female	Total	Male	Female	Total
	DC42: Sedibeng	2 833	2 829	5 662	3 476	3 322	6 798	4 903	4 238
GT421: Emfuleni	2 366	2 357	4 723	3 011	2 881	5 892	3 787	3 290	7 078
GT422: Midvaal	102	117	220	154	136	290	367	383	750
GT423: Lesedi	365	354	719	310	306	616	748	565	1 313
DC48: West Rand	2 912	2 728	5 639	3 719	3 396	7 116	5 114	4 320	9 433
GT481: Mogale City	2 629	2 544	5 173	3 380	3 089	6 468	4 179	3 700	7 879
GT482: Randfontein	61	41	103	110	98	208	392	256	648
GT483: Westonaria	76	40	116	90	79	169	222	121	342
GT484: Merafong City	145	102	247	140	130	270	321	242	564
EKU: Ekurhuleni	14 176	14 213	28 390	19 781	19 926	39 707	35 051	33 007	68 058
JHB: City of Johannesburg	48 368	48 453	96 821	66 419	67 661	134 080	108 231	107 967	216 198
TSH: City of Tshwane	12 386	12 531	24 917	15 236	15 187	30 423	27 618	26 126	53 744
Gauteng	80 675	80 754	161 429	108 631	109 493	218 124	180 916	175 658	356 574

Table 7.1.4.1: Distribution of population by population group (White), sex and municipality – 1996, 2001 and 2011

Municipality	1996			2001			2011		
	Male	Female	Total	Male	Female	Total	Male	Female	Total
	DC42: Sedibeng	72 127	71 985	144 111	64332	65970	130301	70 886	72 494
GT421: Emfuleni	49571	49850	99421	45204	46902	92107	42582	44366	86948
GT422: Midvaal	14245	14074	28319	12739	12551	25290	18493	18376	36869
GT423: Lesedi	8311	8061	16372	6388	6516	12904	9811	9752	19562
DC48: West Rand	64 738	65 288	130 026	65454	67502	132956	67 033	70 008	137 041
GT481: Mogale City	29684	30513	60197	30595	31579	62174	37043	38898	75941
GT482: Randfontein	12298	12692	24990	13013	13580	26593	14570	15377	29948
GT483: Westonaria	6208	5956	12164	5624	5617	11240	3964	3898	7862
GT484: Merafong City	16548	16126	32674	16222	16727	32949	11456	11834	23291
EKU: Ekurhuleni	220 690	230 154	450 845	235277	247338	482615	245 680	256 759	502 439
JHB: City of Johannesburg	238 341	254 143	492 484	247810	266889	514699	263 740	280 789	544 530
TSH: City of Tshwane	239 472	254 076	493 548	245631	261799	507430	283 650	302 845	586 495
Gauteng	835 368	875 646	1 711 014	858504	909497	1768001	930 989	982 895	1 913 884

Table 7.1.5.1: Distribution of population by functional age groups, sex and municipality – 1996, 2001 and 2011

DC42: Sediberg	1996			2001			2011		
	Male	Female	Total	Male	Female	Total	Male	Female	Total
	0-14	99 740	101 544	201 284	101 308	103 251	204 559	116 774	115 637
15-64	240 004	239 443	479 447	276 475	279 205	555 680	319 042	318 178	637 220
65+	12 030	16 865	28 895	13 582	20 267	33 849	19 541	27 311	46 852
Total	351 774	357 852	709 626	391 365	402 723	794 088	455 358	461 126	916 484

GT421: Emfuleni	1996			2001			2011		
	Male	Female	Total	Male	Female	Total	Male	Female	Total
	0-14	84 026	85 724	169 750	83 974	85 903	169 877	92 422	92 004
15-64	197 754	201 315	399 069	227 872	232 913	460 785	248 015	253 769	501 784
65+	9 399	13 800	23 199	10 606	16 681	27 287	14 426	21 028	35 453
Total	291 179	300 839	592 018	322 452	335 497	657 949	354 862	366 800	721 663

GT422: Midvaal	1996			2001			2011		
	Male	Female	Total	Male	Female	Total	Male	Female	Total
	0-14	6 176	6 113	12 289	7 747	7 553	15 300	11 185	10 919
15-64	19 857	17 132	36 989	23 626	22 216	45 842	35 207	31 975	67 182
65+	1 277	1 375	2 652	1 499	1 630	3 128	2 786	3 229	6 014
Total	27 310	24 620	51 930	32 872	31 399	64 270	49 178	46 123	95 301

GT423: Lesedi	1996			2001			2011		
	Male	Female	Total	Male	Female	Total	Male	Female	Total
	0-14	9 538	9 707	19 245	9 587	9 795	19 381	13 168	12 713
15-64	22 393	20 996	43 388	24 978	24 076	49 053	35 820	32 434	68 254
65+	1 355	1 690	3 044	1 477	1 957	3 434	2 330	3 055	5 385
Total	33 286	32 393	65 677	36 042	35 828	71 868	51 317	48 203	99 520

DC48: West Rand	1996			2001			2011		
	Male	Female	Total	Male	Female	Total	Male	Female	Total
	0-14	72 862	73 839	146 701	87 252	87 665	174 917	99 410	98 727
15-64	298 676	186 788	485 464	302 818	243 062	545 880	314 716	275 254	589 971
65+	8 729	10 997	19 726	10 321	13 509	23 830	14 049	18 839	32 888
Total	380 267	271 624	651 891	400 391	344 236	744 627	428 175	392 820	820 995

GT481: Mogale City	1996			2001			2011		
	Male	Female	Total	Male	Female	Total	Male	Female	Total
	0-14	28 673	28 990	57 663	35 256	35 245	70 501	43 217	42 795
15-64	82 324	74 788	157 112	111 635	101 531	213 166	134 624	125 295	259 918
65+	4 051	5 316	9 367	5 193	6 645	11 838	7 141	9 351	16 492
Total	115 048	109 094	224 142	152 084	143 421	295 505	184 981	177 441	362 422

GT482: Randfontein	1996			2001			2011		
	Male	Female	Total	Male	Female	Total	Male	Female	Total
	0-14	13 405	13 589	26 994	16 110	16 099	32 209	18 549	18 556
15-64	39 127	35 614	74 741	46 633	44 914	91 547	53 308	51 540	104 848
65+	2 132	2 717	4 848	2 152	2 933	5 086	3 029	4 305	7 333
Total	54 664	51 920	106 583	64 895	63 946	128 842	74 885	74 400	149 286

GT483: Westonaria	1996			2001			2011		
	Male	Female	Total	Male	Female	Total	Male	Female	Total
	0-14	10 190	10 265	20 455	12 304	12 666	24 970	13 584	13 817
15-64	65 949	26 633	92 583	49 309	33 606	82 915	46 523	35 404	81 927
65+	747	780	1 527	842	1 072	1 914	1 046	1 394	2 440
Total	76 886	37 678	114 565	62 455	47 344	109 799	61 152	50 615	111 767

GT484: Merafong City	1996			2001			2011		
	Male	Female	Total	Male	Female	Total	Male	Female	Total
	0-14	20 594	20 995	41 589	23 582	23 655	47 237	24 060	23 559
15-64	111 275	49 753	161 029	95 241	63 011	158 252	80 262	63 015	143 278
65+	1 799	2 185	3 984	2 134	2 858	4 992	2 834	3 789	6 623
Total	133 668	72 933	206 602	120 957	89 524	210 481	107 157	90 363	197 520

EKU: Ekurhuleni	1996			2001			2011		
	Male	Female	Total	Male	Female	Total	Male	Female	Total
	0-14	261 032	268 146	529 178	302 386	307 407	609 793	389 639	382 824
15-64	728 068	669 415	1 397 483	921 844	862 587	1 784 431	1 185 424	1 094 029	2 279 453
65+	30 952	43 544	74 496	35 094	52 444	87 538	52 660	73 893	126 554
Total	1 020 052	981 105	2 001 157	1 259 324	1 222 438	2 481 762	1 627 724	1 550 747	3 178 470

JHB: City of Johannesburg	1996			2001			2011		
	Male	Female	Total	Male	Female	Total	Male	Female	Total
	0-14	318 120	322 607	640 727	364 647	368 947	733 593	518 404	510 407
15-64	933 086	907 070	1 840 156	1 191 231	1 169 840	2 361 071	1 632 111	1 590 495	3 222 606
65+	47 666	68 732	116 398	51 322	80 068	131 390	74 621	108 789	183 409
Total	1 298 872	1 298 409	2 597 281	1 607 200	1 618 855	3 226 054	2 225 137	2 209 690	4 434 827

TSH: City of Tshwane	1996			2001			2011		
	Male	Female	Total	Male	Female	Total	Male	Female	Total
	0-14	238 878	243 108	481 986	262 726	265 014	527 740	341 388	335 722
15-64	609 313	598 253	1 207 566	760 953	759 133	1 520 086	1 054 342	1 047 132	2 101 474
65+	32 565	48 214	80 779	37 502	56 994	94 496	57 753	85 151	142 904
Total	880 756	889 575	1 770 331	1 061 181	1 081 141	2 142 322	1 453 483	1 468 005	2 921 488

Gauteng	1996			2001			2011		
	Male	Female	Total	Male	Female	Total	Male	Female	Total
	0-14	990 632	1 009 243	1 999 875	1 118 319	1 132 283	2 250 602	1 465 616	1 443 316
15-64	2 809 147	2 600 969	5 410 116	3 453 322	3 313 827	6 767 149	4 505 636	4 325 088	8 830 724
65+	131 942	188 352	320 294	147 821	223 282	371 103	218 624	313 984	532 607
Total	3 931 721	3 798 564	7 730 285	4 719 462	4 669 392	9 388 854	6 189 875	6 082 388	12 272 263

Table 7.1.6.1: Dependency ratios by municipality – 1996, 2001 and 2011

Municipality	Population aged 14 years and younger			Population aged 65 years and older			Population aged between 15 and 64 years			Dependency ratio		
	1996	2001	2011	1996	2001	2011	1996	2001	2011	1996	2001	2011
DC42: Sedibeng	201 284	204 559	232 411	28 895	33 849	46 852	479 447	555 680	637 220	48,0	42,9	43,8
GT421: Emfuleni	169 750	169 877	184 425	23 199	27 287	35 453	399 069	460 785	501 784	48,3	42,8	43,8
GT422: Midvaal	12 289	15 300	22 104	2 652	3 128	6 014	36 989	45 842	67 182	40,4	40,2	41,9
GT423: Lesedi	19 245	19 381	25 881	3 044	3 434	5 385	43 388	49 053	68 254	51,4	46,5	45,8
DC48: West Rand	146 701	174 917	198 136	19 726	23 830	32 888	485 464	545 880	589 971	34,3	36,4	39,2
GT481: Mogale City	57 663	70 501	86 012	9 367	11 838	16 492	157 112	213 166	259 918	42,7	38,6	39,4
GT482: Randfontein	26 994	32 209	37 105	4 848	5 086	7 333	74 741	91 547	104 848	42,6	40,7	42,4
GT483: Westonaria	20 455	24 970	27 400	1 527	1 914	2 440	92 583	82 915	81 927	23,7	32,4	36,4
GT484: Merafong City	41 589	47 237	47 619	3 984	4 992	6 623	161 029	158 252	143 278	28,3	33,0	37,9
EKU: Ekurhuleni	529 178	609 793	772 463	74 496	87 538	126 554	1 397 483	1 784 431	2 279 453	43,2	39,1	39,4
JHB: City of Johannesburg	640 727	733 593	1 028 812	116 398	131 390	183 409	1 840 156	2 361 071	3 222 606	41,1	36,6	37,6
TSH: City of Tshwane	481 986	527 740	677 110	80 779	94 496	142 904	1 207 566	1 520 086	2 101 474	46,6	40,9	39,0
Gauteng	1 999 875	2 250 602	2 908 932	320 294	371 103	532 607	5 410 116	6 767 149	8 830 724	42,9	38,7	39,0

Table 7.1.7.1: Distribution of population by marital status and municipality – 1996, 2001 and 2011

Municipality	1996					2001					2011				
	Married/ living together	Never married	Widowed	Divorced/ separated	Total	Married/ Living together	Never married	Widowed	Divorced/ separated	Total	Married/ living together	Never married	Widowed	Divorced/ separated	Total
DC42: Sedibeng	249 681	405 043	27 021	20 896	702 641	277 466	454 510	35 254	26 859	794 088	319 389	535 514	37 686	23 894	916 484
GT421: Emfuleni	202 288	343 577	22 994	18 107	586 965	223 366	380 699	30 427	23 457	657 949	241 755	429 252	31 362	19 294	721 663
GT422: Midvaal	24 971	23 781	1 930	1 657	52 338	29 120	30 857	2 316	1 978	64 271	42 498	46 960	3 126	2 716	95 301
GT423: Lesedi	22 423	37 685	2 097	1 132	63 337	24 980	42 953	2 510	1 424	71 868	35 136	59 302	3 198	1 885	99 520
DC48: West Rand	279 017	326 079	15 037	12 427	632 561	306 747	401 048	21 146	15 686	744 627	312 821	468 640	22 656	16 877	820 995
GT481: Mogale City	79 240	124 678	6 982	5 805	216 705	110 475	168 955	9 000	7 074	295 505	137 694	206 386	9 723	8 619	362 422
GT482: Randfontein	37 295	58 901	3 154	2 574	101 924	47 109	74 052	4 357	3 324	128 842	53 268	87 028	5 171	3 819	149 286
GT483: Westonaria	63 094	48 202	1 553	1 417	114 265	52 033	53 867	2 259	1 641	109 799	43 548	64 618	2 148	1 454	111 767
GT484: Merafong City	99 389	94 299	3 348	2 632	199 667	97 130	104 174	5 530	3 646	210 481	78 311	110 608	5 614	2 986	197 520
EKU: Ekurhuleni	728 874	1 129 862	59 801	51 500	1 970 037	918 404	1 422 688	78 453	62 217	2 481 762	1 160 998	1 864 032	86 279	67 162	3 178 470
JHB: City of Johannesburg	892 963	1 502 189	86 344	78 245	2 559 741	1 143 614	1 879 027	108 050	95 363	3 226 055	1 616 482	2 594 577	114 113	109 654	4 434 827
TSH: City of Tshwane	608 273	1 005 044	53 735	50 726	1 717 779	754 349	1 253 847	71 575	62 552	2 142 322	1 050 281	1 709 417	84 980	76 810	2 921 488
Gauteng	2 758 809	4 368 217	241 938	213 795	7 582 759	3 400 580	5 411 120	314 478	262 676	9 388 854	4 459 972	7 172 180	345 714	294 397	12 272 263

Table 7.2.1.1: Distribution of the population aged 20 years and older by level of education attained, sex and municipality – 1996, 2001 and 2011

DC42: Sedibeng	1996			2001			2011		
	Male	Female	Total	Male	Female	Total	Male	Female	Total
	No schooling	25082	26994	52076	23805	28594	52400	12146	14426
Some primary	28555	29781	58336	36549	38488	75037	27992	31537	59529
Complete primary	12950	14634	27584	14281	16229	30510	10328	10886	21214
Some secondary	83824	86263	170087	94253	96936	191190	108143	109052	217195
Std 10/ Grade 12	40390	42029	82419	62520	60097	122617	94236	95882	190119
Higher	16616	13462	30079	20203	19788	39991	38914	38393	77307
Total	207418	213164	420582	251611	260134	511745	291758	300177	591936

GT421: Emfuleni	1996			2001			2011		
	Male	Female	Total	Male	Female	Total	Male	Female	Total
	No schooling	19094	21214	40309	17707	22379	40087	8299	10321
Some primary	22874	24703	47578	28895	31092	59987	21187	24889	46076
Complete primary	10881	12655	23536	11966	13650	25616	7690	8453	16143
Some secondary	71218	74821	146038	79378	82429	161807	84824	87633	172458
Std 10/ Grade 12	33218	34827	68045	51949	50589	102538	74711	76946	151657
Higher	12770	10816	23587	16556	16492	33049	30027	30492	60519
Total	170055	179036	349091	206452	216631	423083	226737	238736	465473

GT422: Midvaal	1996			2001			2011		
	Male	Female	Total	Male	Female	Total	Male	Female	Total
	No schooling	2279	2012	4292	2621	2400	5022	1718	1628
Some primary	2489	1961	4450	3637	3495	7032	3047	2736	5783
Complete primary	818	674	1492	977	1097	2074	1313	1100	2414
Some secondary	6003	5098	11101	7239	6934	14173	11684	10315	21999
Std 10/ Grade 12	3727	4026	7753	5726	5244	10969	10486	10212	20698
Higher	2251	1448	3699	2194	1928	4122	5204	4596	9800
Total	17567	15219	32787	22294	21098	43392	33454	30587	64041

GT423: Lesedi	1996			2001			2011		
	Male	Female	Total	Male	Female	Total	Male	Female	Total
	No schooling	3709	3767	7476	3476	3815	7291	2129	2476
Some primary	3192	3117	6309	4116	3902	8018	3758	3911	7670
Complete primary	1251	1306	2557	1338	1482	2821	1324	1333	2657
Some secondary	6603	6345	12948	7636	7574	15210	11634	11104	22738
Std 10/ Grade 12	3446	3176	6622	4846	4264	9110	9039	8725	17764
Higher	1596	1198	2793	1453	1368	2821	3683	3305	6988
Total	19796	18908	38704	22865	22405	45270	31567	30854	62421

DC48: West Rand	1996			2001			2011		
	Male	Female	Total	Male	Female	Total	Male	Female	Total
	No schooling	30268	18348	48616	33606	23474	57080	15313	12898
Some primary	44375	23052	67427	56123	33723	89845	34258	26993	61251
Complete primary	17721	13112	30832	22280	16310	38589	14657	11928	26584
Some secondary	79277	71296	150573	97654	86031	183685	105723	96534	202257
Std 10/ Grade 12	34806	31082	65887	57207	51226	108433	83371	80135	163505
Higher	12908	10004	22911	17101	16203	33304	29431	29376	58807
Total	219354	166893	386248	283971	226966	510937	282752	257865	540617

GT481: Mogale City	1996			2001			2011		
	Male	Female	Total	Male	Female	Total	Male	Female	Total
	No schooling	7310	6084	13394	10177	8671	18848	5993	5381
Some primary	10183	7833	18015	15552	12621	28172	11959	10566	22526
Complete primary	4898	4640	9539	6626	6128	12755	5099	4674	9773
Some secondary	27604	27968	55572	36008	35239	71248	43365	41117	84482
Std 10/ Grade 12	16329	15562	31892	26105	24260	50365	39362	39521	78882
Higher	6306	5145	11451	9263	8790	18053	16996	17266	34262
Total	72630	67232	139862	103732	95708	199440	122774	118524	241298

GT482: Randfontein	1996			2001			2011		
	Male	Female	Total	Male	Female	Total	Male	Female	Total
	No schooling	3153	2731	5884	4695	3873	8568	2058	1899
Some primary	5108	3783	8891	6137	5522	11659	4898	4690	9589
Complete primary	2618	2218	4836	2706	2714	5420	2113	1889	4003
Some secondary	13469	14229	27699	15640	16409	32049	18695	18833	37528
Std 10/ Grade 12	6655	6540	13195	11162	10768	21930	15678	15968	31646
Higher	2991	2300	5291	3082	2981	6062	5717	5839	11556
Total	33994	31801	65795	43422	42267	85689	49159	49119	98279

GT483: Westonaria	1996			2001			2011		
	Male	Female	Total	Male	Female	Total	Male	Female	Total
	No schooling	12121	3629	15749	6895	3792	10686	2702	1963
Some primary	19079	4196	23275	12347	5763	18111	7277	4263	11540
Complete primary	6023	2357	8380	4416	2873	7289	3024	2101	5125
Some secondary	18393	10403	28797	15113	12078	27191	17028	13243	30271
Std 10/ Grade 12	4665	2688	7353	6417	5103	11520	10958	8850	19808
Higher	973	627	1600	1500	1240	2741	2103	1905	4008
Total	61254	23901	85155	46688	30849	77538	43094	32324	75418

GT484: Merafong City	1996			2001			2011		
	Male	Female	Total	Male	Female	Total	Male	Female	Total
	No schooling	7685	5904	13589	11840	7138	18978	4559	3655
Some primary	10005	7239	17245	22087	9817	31904	10123	7474	17597
Complete primary	4181	3897	8078	8531	4594	13125	4420	3264	7684
Some secondary	19810	18696	38506	30893	22305	53197	26635	23341	49976
Std 10/ Grade 12	7157	6291	13448	13522	11095	24617	17373	15796	33169
Higher	2638	1932	4570	3256	3193	6448	4614	4367	8981
Total	51476	43960	95435	90128	58142	148270	67725	57897	125622

EKU: Ekurhuleni	1996			2001			2011		
	Male	Female	Total	Male	Female	Total	Male	Female	Total
	No schooling	63549	60104	123653	74846	78902	153747	37047	40012
Some primary	83312	65776	149088	103498	88677	192175	84214	76350	160564
Complete primary	44888	41290	86179	49894	45431	95125	37306	33805	71111
Some secondary	258743	257388	516130	300470	297698	598168	391492	362820	754311
Std 10/ Grade 12	136354	132212	268566	240446	217112	457557	391451	367224	758675
Higher	56035	44272	100307	84815	80731	165546	157882	154579	312462
Total	642881	601043	1243924	853769	808551	1662319	1099392	1034789	2134181

JHB: City of Johannesburg	1996			2001			2011		
	Male	Female	Total	Male	Female	Total	Male	Female	Total
	No schooling	66595	62673	129267	78496	83080	161575	43747	44451
Some primary	92818	82363	175181	116128	108694	224823	102953	97123	200075
Complete primary	54064	56116	110180	59033	60381	119414	53088	49931	103019
Some secondary	328597	350525	679123	377761	399777	777538	499318	489356	988674
Std 10/ Grade 12	196370	193325	389694	327498	311289	638787	528151	526194	1054345
Higher	88580	80626	169206	155585	151562	307147	285433	299544	584976
Total	827024	825627	1652652	1114501	1114783	2229284	1512689	1506598	3019287

TSH: City of Tshwane	1996			2001			2011		
	Male	Female	Total	Male	Female	Total	Male	Female	Total
	No schooling	49597	58605	108202	55617	70266	125883	35531	45740
Some primary	57588	53785	111373	75665	72247	147912	65461	66109	131570
Complete primary	30310	31420	61730	33610	34643	68254	27793	27808	55600
Some secondary	178535	183889	362424	205253	208745	413997	282388	270124	552513
Std 10/ Grade 12	140189	141809	281999	213320	212308	425628	326409	339396	665804
Higher	78619	72182	150801	117779	116498	234276	222802	235968	458769
Total	534838	541691	1076529	701244	714707	1415950	960384	985144	1945529

Gauteng	1996			2001			2011		
	Male	Female	Total	Male	Female	Total	Male	Female	Total
No schooling	235091	226724	461815	266370	284315	550685	143783	157527	301311
Some primary	306648	254757	561405	387963	341830	729792	314879	298112	612990
Complete primary	159934	156573	316506	178898	172995	351893	143171	134358	277528
Some secondary	928976	949361	1878338	1075391	1089188	2164579	1387064	1327887	2714950
Std 10/ Grade 12	548109	540457	1088566	900991	852032	1753022	1423618	1408830	2832448
Higher	252758	220546	473305	395483	384781	780265	734461	757861	1492322
Total	2431517	2348418	4779935	3205096	3125140	6330236	4146975	4084574	8231549

Table 7.2.2.1: Distribution of the population aged 5–24 years by school attendance, sex and municipality – 1996, 2001 and 2011

DC42: Sedibeng	1996			2001			2011		
	Male	Female	Total	Male	Female	Total	Male	Female	Total
	Attending	95 043	96 939	191 982	107 819	108 116	215 935	111 099	110 312
Not attending	40 001	40 001	80 002	42 907	43 398	86 305	43 840	43 243	87 083
Total	135 044	136 940	271 984	150 726	151 514	302 240	154 939	153 555	308 494

GT421: Emfuleni	1996			2001			2011		
	Male	Female	Total	Male	Female	Total	Male	Female	Total
	Attending	81 002	83 151	164 153	91 475	91 806	183 281	90 064	90 169
Not attending	33 228	33 185	66 414	34 245	35 094	69 339	33 866	33 768	67 634
Total	114 230	116 336	230 567	125 720	126 900	252 620	123 930	123 937	247 867

GT422: Midvaal	1996			2001			2011		
	Male	Female	Total	Male	Female	Total	Male	Female	Total
	Attending	5 368	5 061	10 430	6 899	6 758	13 657	9 745	9 267
Not attending	3 044	2 872	5 916	4 162	4 062	8 224	4 696	4 359	9 056
Total	8 412	7 933	16 346	11 061	10 820	21 881	14 441	13 626	28 068

GT423: Lesedi	1996			2001			2011		
	Male	Female	Total	Male	Female	Total	Male	Female	Total
	Attending	8 673	8 727	17 400	9 445	9 552	18 998	11 290	10 876
Not attending	3 729	3 944	7 673	4 500	4 241	8 742	5 278	5 115	10 394
Total	12 402	12 671	25 073	13 945	13 793	27 740	16 568	15 991	32 560

DC48: West Rand	1996			2001			2011		
	Male	Female	Total	Male	Female	Total	Male	Female	Total
	Attending	56 392	57 130	113 522	74 503	73 436	147 939	85 501	85 425
Not attending	39 096	35 957	75 054	48 439	47 112	95 552	43 502	41 544	85 047
Total	95 488	93 087	188 576	122 942	120 548	243 491	129 003	126 969	255 973

GT481: Mogale City	1996			2001			2011		
	Male	Female	Total	Male	Female	Total	Male	Female	Total
	Attending	23 817	24 113	47 930	32 557	31 533	64 090	38 070	37 842
Not attending	13 254	12 862	26 116	20 691	18 464	39 155	18 220	17 430	35 650
Total	37 071	36 975	74 046	53 248	49 997	103 245	56 290	55 272	111 562

GT482: Randfontein	1996			2001			2011		
	Male	Female	Total	Male	Female	Total	Male	Female	Total
	Attending	11 277	11 338	22 615	14 006	14 065	28 071	16 559	16 468
Not attending	6 174	6 174	12 347	8 433	8 151	16 584	7 774	7 573	15 347
Total	17 451	17 512	34 962	22 439	22 216	44 655	24 333	24 041	48 373

GT483: Westonaria	1996			2001			2011		
	Male	Female	Total	Male	Female	Total	Male	Female	Total
	Attending	6 117	6 098	12 214	8 798	8 816	17 614	10 812	11 060
Not attending	7 361	6 435	13 796	6 990	7 661	14 652	7 189	6 475	13 664
Total	13 478	12 533	26 010	15 788	16 477	32 266	18 001	17 535	35 536

GT484: Merafong City	1996			2001			2011		
	Male	Female	Total	Male	Female	Total	Male	Female	Total
	Attending	15 182	15 581	30 763	19 141	19 022	38 163	20 060	20 055
Not attending	12 308	10 487	22 795	12 325	12 836	25 161	10 319	10 066	20 385
Total	27 490	26 068	53 558	31 466	31 858	63 324	30 379	30 121	60 501

EKU: Ekurhuleni	1996			2001			2011		
	Male	Female	Total	Male	Female	Total	Male	Female	Total
	Attending	222 595	229 550	452 144	285 852	287 529	573 382	338 172	334 332
Not attending	119 555	117 349	236 905	153 047	147 184	300 231	166 398	159 965	326 363
Total	342 150	346 899	689 049	438 899	434 713	873 613	504 570	494 297	998 866

JHB: City of Johannesburg	1996			2001			2011		
	Male	Female	Total	Male	Female	Total	Male	Female	Total
	Attending	280 563	285 729	566 292	353 152	355 511	708 663	445 870	447 987
Not attending	151 616	145 402	297 018	199 630	193 446	393 077	211 940	209 123	421 062
Total	432 179	431 131	863 310	552 782	548 957	1 101 740	657 810	657 110	1 314 919

TSH: City of Tshwane	1996			2001			2011		
	Male	Female	Total	Male	Female	Total	Male	Female	Total
	Attending	221 290	224 185	445 475	281 065	283 788	564 853	327 685	330 148
Not attending	92 605	95 573	188 178	114 374	111 392	225 765	126 791	124 457	251 248
Total	313 895	319 758	633 653	395 439	395 180	790 618	454 476	454 605	909 081

Gauteng	1996			2001			2011		
	Male	Female	Total	Male	Female	Total	Male	Female	Total
	Attending	875 883	893 533	1 769 416	1 102 391	1 108 380	2 210 771	1 308 327	1 308 203
Not attending	442 874	434 283	877 157	558 398	542 532	1 100 930	592 471	578 331	1 170 802
Total	1 318 757	1 327 816	2 646 573	1 660 789	1 650 912	3 311 701	1 900 798	1 886 534	3 787 332

Table 7.3.1.1: Distribution of the population aged between 15 and 64 years by employment status and municipality – 1996, 2001 and 2011

Municipality	Employed			Unemployed			Unemployed rate	
	1996	2001	2011	1996	2001	2011	1996	2011
	DC42: Sediberg	198 909	198275	271 398	105 325	155256	32	
GT421: Emfuleni	156 686	153261	202 543	96 057	136971	34.8		
GT422: Midvaal	23 106	24630	37 336	2 140	7284	18.6		
GT423: Lesedi	19 118	20384	31 518	7 127	11001	26.1		
DC48: West Rand	288 000	266296	293 335	78 792	126119	26.7		
GT481: Mogale City	81 304	100037	134 635	29 390	50804	24.7		
GT482: Randfontein	37 263	41394	51 480	12 959	23360	27.2		
GT483: Westonaria	63 235	41297	40 585	14 460	19276	32.3		
GT484: Merafong City	106 198	83568	66 635	21 983	32679	27.2		
EKU: Ekurhuleni	660 930	760864	1 126 844	315 170	515674	28.8		
JHB: City of Johannesburg	926 590	1082758	1 696 520	386 573	646949	24.7		
TSH: City of Tshwane	607 281	707626	1 079 273	194 773	326640	24.2		
Gauteng	2 681 710	3015819	4 467 370	1 080 633	1 770638	26.3		

Municipality	Employed				Unemployed				Unemployment rate			
	1996	2001	2011	1996	2001	2011	1996	2001	2011	1996	2001	2011
	DC42: Sedibeng	198 909	198275	271 398	105 325	155256	127 217	34,6	43,9	31,9	34,6	43,9
GT421: Emfuleni	156 686	153261	202 543	96 057	136971	107 554	38,0	47,2	34,7	38,0	47,2	34,7
GT422: Midvaal	23 106	24630	37 336	2 140	7284	8 620	8,5	22,8	18,8	8,5	22,8	18,8
GT423: Lesedi	19 118	20384	31 518	7 127	11001	11 042	27,2	35,1	25,9	27,2	35,1	25,9
DC48: West Rand	288 000	266296	293 335	78 792	126119	104 894	21,5	32,1	26,3	21,5	32,1	26,3
GT481: Mogale City	81 304	100037	134 635	29 390	50804	43 846	26,6	33,7	24,6	26,6	33,7	24,6
GT482: Randfontein	37 263	41394	51 480	12 959	23360	19 172	25,8	36,1	27,1	25,8	36,1	27,1
GT483: Westonaria	63 235	41297	40 585	14 460	19276	16 990	18,6	31,8	29,5	18,6	31,8	29,5
GT484: Merafong City	106 198	83568	66 635	21 983	32679	24 886	17,1	28,1	27,2	17,1	28,1	27,2
EKU: Ekurhuleni	660 930	760864	1 126 844	315 170	515674	455 608	32,3	40,4	28,8	32,3	40,4	28,8
JHB: City of Johannesburg	926 590	1082758	1 696 520	386 573	646949	564 970	29,4	37,4	25,0	29,4	37,4	25,0
TSH: City of Tshwane	607 281	707626	1 079 273	194 773	326640	345 356	24,3	31,6	24,2	24,3	31,6	24,2
Gauteng	2 681 710	3015819	4 467 370	1 080 633	1770638	1 598 044	28,7	37,0	26,3	28,7	37,0	26,3

Table 7.4.1.1: Distribution of average household size by municipality – 1996, 2001 and 2011

Municipality	Total household population		Number of households		Average household size				
	1996	2001	2011	1996	2001	2011	1996	2001	2011
DC42: Sedibeng	706 894	776 238	886 814	182 570	224 966	279 768	4,0	3,5	3,2
GT421: Emfuleni	591 870	646 426	701 203	149 360	186 926	220 135	4,0	3,5	3,2
GT422: Midvaal	51655	61 459	90 664	17 508	19 573	29 965	3,0	3,1	3,0
GT423: Lesedi	63369	68 353	94 947	15 701	18 467	29 668	4,0	3,7	3,2
DC48: West Rand	532 378	654 576	765 754	152 256	207 793	267 397	3,5	3,2	2,9
GT481: Mogale City	215 979	272 236	342 003	62 191	85 194	117 373	3,5	3,2	2,9
GT482: Randfontein	99410	119 936	138 156	27 381	36 165	43 299	3,6	3,3	3,2
GT483: Westonaria	74501	89 989	104 415	23 173	30 098	40 101	3,2	3,0	2,6
GT484: Merafong City	142 486	172 415	181 180	39 512	56 336	66 624	3,6	3,1	2,7
EKU: Ekurhuleni	195 6398	2 413 709	3 015 771	542 719	745 576	1 015 465	3,6	3,2	3,0
JHB: City of Johannesburg	2 544 846	3 119 151	4 132 148	732 845	1 006 910	1 434 856	3,5	3,1	2,9
TSH: City of Tshwane	1 704 073	2 041 719	2 766 601	459 122	606 025	911 536	3,7	3,4	3,0
Gauteng	7 444 591	9 005 392	11 567 089	2 069 512	2 791 270	3 909 022	3,6	3,2	3,0

Table 7.4.3.1: Distribution of households by tenure status and municipality – 1996, 2001 and 2011

Municipality	Owned and fully paid off		Owned but not yet paid off		Rented		Occupied rent-free	
	2001	2011	2001	2011	2001	2011	2001	2011
DC42: Sedibeng								
GT421: Emfuleni	76 504	99 262	46 740	37 491	52 002	78 145	49 720	57 115
GT422: Midvaal	65 164	79 155	40 465	28 289	44 794	62 461	36 502	44 468
GT423: Lesedi	4 007	7 151	3 909	5 608	3 053	7 322	8 604	8 782
	7 332	12 956	2 366	3 594	4 154	8 362	4 615	3 865
DC48: West Rand	46 723	65 042	38 225	31 184	71 484	109 806	51 362	54 214
GT481: Mogale City	19 401	28 179	20 350	17 634	21 964	43 066	23 479	25 655
GT482: Randfontein	9 670	13 233	7 452	6 945	11 686	14 402	7 357	7 318
GT483: Westonaria	4 562	7 680	2 817	2 734	16 705	20 059	6 014	8 627
GT484: Merafong City	13 090	15 950	7 606	3 871	21 129	32 279	14 511	12 614
EKU: Ekurhuleni	213 429	277 633	176 821	169 175	206 518	378 364	148 808	164 660
JHB: City of Johannesburg	253 726	340 801	221 568	236 694	332 438	590 652	199 179	227 609
TSH: City of Tshwane	219 895	307 004	154 678	166 840	129 531	291 590	101 920	121 713
Gauteng	810 276	1 089 742	638 033	641 384	791 972	1 448 558	550 990	625 311

Table 7.4.4.1: Distribution of households with a radio, television, refrigerator, computer, cellphone, landline and access to internet by municipality – 2001 and 2011

Municipality	Radio		Television		Refrigerator		Cellphone		Landline		Computer		Access to internet	
	2001	2011	2001	2011	2001	2011	2001	2011	2001	2011	2001	2011	2001	2011
DC42: Sedibeng	176 361	203 435	144 683	227 333	144 719	216 680	78 103	255 622	61 358	36 987	19 469	72 001	110 193	20 111
GT421: Emfuleni	147 065	161 589	122 452	180 632	124 415	174 694	63 943	201 587	50 186	28 267	14 352	55 533	89 463	11 316
GT422: Midvaal	15 226	20 882	11 273	22 587	10 216	20 329	8 270	27 331	6 384	5 176	3 476	9 693	11 316	9 413
GT423: Lesedi	14 070	20 964	10 957	24 114	10 089	21 657	5 890	26 705	4 798	3 544	1 641	6 775	9 413	9 413
DC48: West Rand	150 327	177 068	119 632	198 351	108 259	169 696	78 092	244 754	51 189	33 976	18 570	55 600	92 947	20 111
GT481: Mogale City	64 485	81 251	53 507	91 954	50 412	79 984	35 719	108 472	25 152	19 113	9 916	30 563	46 802	16 978
GT482: Randfontein	27 580	30 387	23 396	35 370	21 754	31 476	15 000	39 539	10 394	6 466	3 461	10 488	16 978	10 005
GT483: Westonaria	18 987	23 013	12 789	23 899	9 970	19 062	9 016	36 332	4 017	2 192	1 321	4 496	10 005	19 161
GT484: Merafong City	39 275	42 416	29 940	47 128	26 124	39 175	18 358	60 412	11 625	6 206	3 871	10 053	19 161	432 219
EKU: Ekurhuleni	558 193	681 597	460 524	784 608	432 578	690 427	313 772	947 637	213 700	154 995	91 347	261 983	432 219	711 068
JHB: City of Johannesburg	786 693	1 023 928	679 897	1 202 078	629 582	1 070 609	466 227	1 354 282	340 761	303 942	163 579	481 552	711 068	468 853
TSH: City of Tshwane	481 983	643 801	421 224	745 443	412 058	699 875	304 504	865 549	214 674	172 679	111 769	342 923	468 853	1 815 279
Gauteng	2 153 557	2 729 828	1 825 959	3 157 813	1 727 197	2 847 287	1 240 697	3 667 844	881 682	702 579	404 734	1 214 059	1 815 279	1 815 279

Table 7.4.5.1: Distribution of households using electricity for lighting, cooking and heating by municipality – 1996, 2001 and 2011

Municipality	Lighting			Cooking			Heating		
	1996	2001	2011	1996	2001	2011	1996	2001	2011
DC42: Sedibeng	143 500	193 734	253 352	125 631	173 402	243 530	116 881	160 206	222 239
GT421: Emfuleni	122 375	167 799	202 903	105 843	152 017	198 800	97 811	140 476	186 383
GT422: Midvaal	12 960	12 395	23 770	12 205	11 620	21 555	11 737	11 021	17 716
GT423: Lesedi	8 165	13 540	26 679	7 584	9 766	23 175	7 333	8 709	18 140
DC48: West Rand	103 736	144 960	218 339	94 244	127 006	207 799	90 320	121 862	183 990
GT481: Mogale City	51 251	67 999	100 788	45 563	58 296	96 689	43 340	55 270	86 515
GT482: Randfontein	20 653	27 358	36 588	19 433	26 180	35 146	18 712	25 452	28 498
GT483: Westonaria	9 016	12 955	25 770	8 788	12 514	25 406	8 626	12 387	24 486
GT484: Merafong City	22 816	36 649	55 194	20 461	30 016	50 558	19 642	28 754	44 490
EKU: Ekurhuleni	405 302	557 958	834 444	348 166	489 262	805 789	326 697	460 224	665 998
JHB: City of Johannesburg	623 133	854 455	1 303 046	587 579	792 737	1 254 373	576 118	774 236	1 177 985
TSH: City of Tshwane	352 506	483 977	807 179	328 022	427 411	767 807	319 199	420 177	670 242
Gauteng	1 628 177	2 235 083	3 416 360	1 483 642	2 009 818	3 279 296	1 429 216	1 936 705	2 920 454

Table 7.4.7.1: Distribution of households by type of refuse removal and municipality – 1996, 2001 and 2011

Municipality	Removed by local authority/ private company			Communal/ own refuse dump			No rubbish disposal		
	1996	2001	2011	1996	2001	2011	1996	2001	2011
DC42: Sedibeng	104 095	114 461	250 130	64 523	91 784	22 835	10 404	18 721	5 287
GT421: Emfuleni	84 631	90 575	199 645	54 346	79 823	15 805	7 925	16 528	3 705
GT422: Midvaal	8 244	10 185	24 897	6 539	8 407	3 755	2 021	981	948
GT423: Lesedi	11 221	13 702	25 588	3 639	3 554	3 274	457	1 211	634
DC48: West Rand	122 359	162 939	212 610	22 077	37 431	43 577	4 568	7 424	9 594
GT481: Mogale City	48 649	62 885	95 646	10 820	18 544	16 811	1 581	3 765	4 092
GT482: Randfontein	20 926	27 969	34 547	4 867	7 436	6 709	914	761	1 746
GT483: Westonaria	19 611	24 203	29 292	2 302	4 844	9 709	746	1 051	789
GT484: Merafong City	33 173	47 882	53 124	4 088	6 607	10 347	1 326	1 847	2 967
EKU: Ekurhuleni	475 209	662 259	908 191	41 790	62 946	78 874	17 702	20 372	25 303
JHB: City of Johannesburg	675 388	945 759	1 391 394	31 257	48 522	33 332	9 588	12 630	7 528
TSH: City of Tshwane	345 233	476 908	747 352	90 849	105 158	128 902	16 930	23 959	29 980
Gauteng	1 722 284	2 362 325	3 509 676	250 497	345 841	307 520	59 191	83 105	77 692

Table 7.4.8.1: Distribution of households by type of toilet facility and municipality – 1996, 2001 and 2011

Municipality	Flush/ chemical toilets			Pit latrines			Bucket toilets			No toilets		
	1996	2001	2011	1996	2001	2011	1996	2001	2011	1996	2001	2011
DC42: Sedibeng	137 200	188 526	250 232	36 964	26 097	21 156	4 470	4 487	3 023	3 186	5 857	3 199
GT421: Ermfuleni	115 155	161 866	198 978	30 342	19 312	15 409	1 057	1 928	2 029	2 252	3 820	2 257
GT422: Midvaal	12 559	13 108	24 718	3 953	4 890	3 576	394	767	645	473	808	606
GT423: Lesedi	9 486	13 552	26 536	2 669	1 894	2 172	3 019	1 792	349	461	1 229	335
DC48: West Rand	116 054	152 799	220 048	24 325	39 565	35 764	4 899	6 759	4 743	5 825	8 670	4 506
GT481: Mogale City	54 112	67 392	101 968	5 727	12 230	8 429	455	1 899	3 703	1 557	3 673	2 302
GT482: Randfontein	23 550	30 113	36 853	2 666	4 794	5 535	148	268	241	823	990	481
GT483: Westonaria	10 903	13 578	25 435	7 017	11 536	12 549	2 843	3 279	556	2 293	1 706	1 049
GT484: Merafong City	27 489	41 716	55 792	8 915	11 005	9 250	1 453	1 313	244	1 151	2 301	673
EKU: Ekurhuleni	453 602	619 014	890 040	56 788	81 143	80 613	5 494	6 805	23 594	24 087	38 613	11 806
JHB: City of Johannesburg	632 731	871 264	1 298 412	51 731	68 817	86 336	32 484	38 268	28 648	11 025	28 560	11 491
TSH: City of Tshwane	338 101	433 562	723 935	111 058	148 573	158 965	2 157	5 277	9 071	5 879	18 612	11 976
Gauteng	1 677 688	2 265 165	3 382 668	280 866	364 196	382 834	49 504	61 596	69 080	50 001	100 313	42 978

Table 7.4.9.1: Distribution of average household income by municipality – 2001 and 2011

Municipality	2001	2011
DC42: Sediberg	45 788	94 773
GT421: Ermfuleni	42 572	86 895
GT422: Midvaal	72 424	145 180
GT423: Lesedi	50 171	102 317
DC48: West Rand	51 292	100 812
GT481: Mogale City	61 667	123 591
GT482: Randfontein	52 301	107 185
GT483: Westonaria	36 754	63 945
GT484: Merafong City	42 813	78 686
EKU: Ekurhuleni	67 605	125 688
JHB: City of Johannesburg	89 728	183 247
TSH: City of Tshwane	94 908	182 822
Gauteng	78 541	156 222

Table 7.4.10.1: Distribution of female headed households by municipality – 1996, 2001 and 2011

Municipality	No. of households headed by women			Total number of households			% of female-headed households		
	1996	2001	2011	1996	2001	2011	1996	2001	2011
DC42: Sedibeng	49264	76 660	97 122	182 570	224 966	279 768	27	34,1	34,7
GT421: Emfuleni	42662	65 924	79 953	149 360	186 926	220 135	28,6	35,3	36,3
GT422: Midvaal	3085	4 798	7 893	17 508	19 573	29 965	17,6	24,5	26,3
GT423: Lesedi	3517	5 938	9 277	15 701	18 467	29 668	22,4	32,2	31,3
DC48: West Rand	43299	77 798	83 076	152 256	207 793	267 397	28,4	37,4	31,1
GT481: Mogale City	16299	27 692	36 637	62 191	85 194	117 373	26,2	32,5	31,2
GT482: Randfontein	7576	13 386	14 563	27 381	36 165	43 299	27,7	37,0	33,6
GT483: Westonaria	6243	12 661	12 271	23 173	30 098	40 101	26,9	42,1	30,6
GT484: Merafong City	13181	24 059	19 605	39 512	56 336	66 624	33,4	42,7	29,4
EKU: Ekurhuleni	142373	248 216	317 690	542 719	745 576	1 015 465	26,2	33,3	31,3
JHB: City of Johannesburg	232492	387 191	518 737	732 845	1 006 910	1 434 856	31,7	38,5	36,2
TSH: City of Tshwane	135361	216 941	326 113	459 122	606 025	911 536	29,5	35,8	35,8
Gauteng	602789	1 006 807	1 342 739	2 069 512	2 791 270	3 909 022	29,1	36,1	34,3

Table 7.4.11.1: Distribution of child headed households by municipality – 1996, 2001 and 2011

Municipality	1996			2001			2011		
	Households headed by children	Total households	% of child headed households	Households headed by children	Total households	% of child headed households	Households headed by children	Total households	% of child headed households
DC42: Sedibeng	831	182 570	0,4	623	224 966	0,3	721	279 768	0,3
GT421: Emfuleni	731	149 360	0,5	496	186 926	0,3	556	220 135	0,3
GT422: Midvaal	32	17 508	0,5	61	19 573	0,3	78	29 965	0,3
GT423: Lesedi	68	15 701	0,2	65	18 467	0,4	86	29 668	0,3
DC48: West Rand	697	152 256	0,4	965	207 793	0,5	757	267 397	0,3
GT481: Mogale City	314	62 191	0,5	288	85 194	0,3	239	117 373	0,2
GT482: Randfontein	95	27 381	0,5	153	36 165	0,4	88	43 299	0,2
GT483: Westonaria	72	23 173	0,3	194	30 098	0,6	191	40 101	0,5
GT484: Merafong City	216	39 512	0,3	331	56 336	0,6	238	66 624	0,4
EKU: Ekurhuleni	1803	542 719	0,5	2 201	745 576	0,3	2 536	1 015 465	0,2
JHB: City of Johannesburg	2596	732 845	0,3	3 478	1 006 910	0,3	4 171	1 434 856	0,3
TSH: City of Tshwane	2038	459 122	0,4	2 134	606 025	0,4	2 360	911 536	0,3
Gauteng	7 966	2 069 512	0,4	9 401	2 791 270	0,3	10 545	3 909 022	0,3